

STATEMENT OF COMPLIANCE

26 April 2002
The Honourable Alan Carpenter, MLA
Minister for Education
12th Floor
Dumas House
2 Havelock Street
West Perth
WA 6005

Dear Minister

In accordance with Section 66 of the Financial Administration and Audit Act 1985, I hereby submit for your information and presentation to Parliament the Annual Report of Murdoch University for the year ended 31 December 2001.

The Report has been prepared in accordance with the provisions of the Financial Administration and Audit Act 1985.

The delayed submission of this report was approved by you in your letter of 27 February, 2002. In this letter, you granted an extension of time until 28 April, 2002, for the following reasons:

- the introduction of a new student fee computer system and associated reconciliation issues;
- the introduction of a new asset management module and associated reconciliation issues; and
- the resignation and illness of key financial accounting staff.

Yours sincerely



Chancellor
Murdoch University

CONTENTS

VICE CHANCELLOR'S REPORT	4
HIGHLIGHTS	6
Fiery speech marks Harmony Day oration	6
Australia's best university teacher	6
World 'first' as students show Nike, Pizza Hut the way ahead	6
Boost for multi-million dollar environmental industry	6
First Indigenous Master of Law	7
Hands across the divide	7
More for animal care	7
Hold the front page!	8
Putting students first	8
New Dean brings industry experience	8
Computer language for the world?	8
School of Business formed	8
Environmental leaders	8
Weather news from space	9
Breakthrough for skin cancer sufferers	9
Power surge for remote regions	9
Award for Parker Centre	9
Two from Murdoch on WA science council	9
Worldwide Indigenous meet at Murdoch	10
Murdoch film-maker up for an 'Oscar'	10
WA 'dream-team' show the way	10
Tourism award for rural 'Tapestry'	11
Arts Dean wins top award	11
Top marks for film on asylum-seekers	11
National award for journalism PhD student	11
Festival of Indigenous film	11
Japanese scholarships top \$2 million	12
Winners at the WA screen awards	12
Social justice network paves the way	12
Positive ageing	12

An aboriginal point of view	13	TEACHING AND LEARNING	38
Indigenous tourism in the south west region of Western Australia:	13	Student services	38
City of Cockburn, aboriginal oral history	13	Students with disabilities	38
Indigenous interpretation of Murdoch University Campus	13	INTERNATIONAL OUTLOOK	39
Justice for all	13	ADUTOR GENERAL LETTER	40
Media frenzy for high school students	14	KEY PERFORMANCE INDICATORS	41
Migrant plights in focus at New Centre	14	Introduction	41
Educators lead the way	15	Summary of Indicators	41
Rockingham strengthens ties between students and industry	15	Excellence in Teaching and Learning	41
Microsoft on board for new engineering degree	15	CERTIFICATION OF PERFORMANCE INDICATORS	51
REPORT ON OPERATIONS	17	CERTIFICATE OF COMPLIANCE	52
MISSION AND VISION	18	STATEMENT OF EXPENDITURE	53
CHARACTERISTICS OF THE STUDENT POPULATION	20	FINANCIAL STATEMENTS	54
Overview	20	CERTIFICATION OF FINANCIAL STATEMENTS	55
Principal Feature of the Year	20	ADUTOR GENERAL LETTER	56
Growth Plan	20	STATEMENT OF FINANCIAL POSITION	58
Summary Statistics	20	STATEMENT OF FINANCIAL PERFORMANCE	59
Equity Student Statistics	25	STATEMENT OF CASH FLOWS	60
EQUITY 2001	28	NOTES TO THE FINANCIAL REPORTS	61
Report of Operations	29		
FUNCTIONAL CHART	30		
ORGANISATIONAL CHART	31		
OFFICERS OF THE UNIVERSITY	32		
SENATE	33		
RESEARCH REPORT 2002	34		
Performance against new funding arrangements	34		
Collaborative research	35		
Research strengths	36		
Research training	37		
Financial support	37		
MurdochLINK – A powerful force for research	37		

VICE CHANCELLOR'S REPORT

2001 was a year in which Murdoch University maintained its superb record of teaching, research and community service, as a glance at the 'Highlight' section of this report will show. Our teaching record again has been outstanding, with one of our professors winning the Prime Minister's Award as the University Teacher of the Year, and our students reporting continued satisfaction with their education experience. We have maintained our Top-10 ranking among Australian universities for research students as a proportion of total student enrolments, and in terms of books authored. Our researchers have developed strong links with industry, our appeal to international students remains as strong as ever, and our plans to develop the University are bearing strong fruit.

Other highlights for the year include:

- Hosting the inaugural Harmony Day Oration;
- In a world 'first', Murdoch Business undergraduates developing interactive advertising campaigns for some of the world's largest companies;
- A new United Nations Environmental Technology Centre that will enable Western Australia to play a major role in developing and applying environmental technology;
- More than two hundred Aboriginal communities across Australia receiving electricity for the first time under a national joint venture project overseen by the Murdoch University-based Australian Cooperative Research Centre for Renewable Energy (ACRE);
- Student numbers continue to grow on the Rockingham campus, from 53 students in 1996 to 576 in 2001, providing effective support for the southwest corridor (Kwinana/Rockingham/Mandurah/Peel);
- Murdoch's School of Media, Communication and Culture sweeping the pool at the national Journalism Education Association Ossie Awards;

- Professor Kateryna Longley, the Executive Dean of Murdoch's Division of Social Sciences, Humanities and Education, winning the 2001 Telstra Award as WA Businesswoman of the Year in the Shell Community and Government Sector;
- Murdoch Japanese language students maintaining a superb scholarship record. They have been awarded more than \$2.1 million in scholarships over the past decade to travel to Japan and improve their language skills;
- Setting up a Social Justice Network (SOJURN) at Murdoch to improve social justice for West Australians and to increase understanding and knowledge; and
- A Murdoch academic working with Justices of the Peace to improve their understanding of Aboriginal people.

What is particularly pleasing is that Murdoch achieves this high national standing despite its relatively small size and relative isolation in the West. That these successes have been maintained steadily over a number of years is a tribute to the dedication and skills of its academic and general staff, and to the 'Murdoch Ethos' which sets this university apart.

At Murdoch it is often the 'small things' that make a difference, that capture the loyalty of so many teachers and students. Some examples will illustrate the point.

Murdoch aspires to provide its disabled students with the most accessible campus in Australia, and to provide meaningful employment for people living with disabilities. These efforts were recognised in 2000 with the Telstra Award and the Prime Minister's National Employer of the Year Award, given for Murdoch's work in employing people with disabilities. We followed up this year by further developing the University's Disability Plan, improving disability access in car parks, providing more disabled parking spaces, installing automatic doors for better access, upgrading signage and building new pathways.

Computer services for our students and staff have been enhanced by upgrading Murdoch's data network. The upgrade provided high-speed 100 megabit capacity to every desktop and meeting room, allowing the University to operate powerful web and videoconferencing services, telephone, and video on demand for future online education requirements. And with the introduction of the Callista Student Administration System, Murdoch brought student services into the Internet age. The new MyInfo student web page provides the gateway to information including timetables, building and classroom locations, and examination results. Students can also change their personal details and email address from this facility, and can re-enrol online. All rooms in Student Village are now connected to the Internet and a new web email service gives all staff and students secure access to their email from anywhere on the Internet.

Murdoch University has always prided itself on its strong commitment to racial equality, and its support of the many cultures that make up the Australian community. In recognition of these efforts, the University has been given the instruments for a valuable, complete, hand-crafted Indonesian gamelan orchestra by Western Australia's sister state of East Java. A superb addition to Murdoch's rich cultural Fine Arts tradition, the gamelan orchestra has been used in a number of theatrical productions and in popular visits that bring Indonesian music and culture to schools in WA. It will be housed in an architect-designed pavilion known as a pendopo, that will be built with funds provided by the Lotteries Commission.

We operate in an environment in which opportunities must be taken when they present themselves. In a major expansion of the University's offerings and a significant addition to health science education in WA, Murdoch will offer a new BSc in Chiropractic from 2002. This five-year program is a strategic initiative by Murdoch to increase enrolments in science when national trends are declining, and to provide specialist teaching in the health sciences field. It will provide greater choice to

Western Australians who previously could study only in the eastern States and as the only chiropractic course in WA it will enhance standards in the profession. It is expected to attract international as well as domestic students. The course has been established with the close collaboration and support of the chiropractic profession. A new School of Health Sciences has been created to support the initiative.

In July 2001 the Vice Chancellor, Professor Steven Schwartz, advised the University that he would not be seeking a renewal of his contract as he had been offered and accepted the position of Vice Chancellor at Brunel University in the UK and would take up this position from March 2002. He took leave from mid October and Senate approved the appointment of the Deputy Vice Chancellor, Professor Jeff Gawthorne, as Acting Vice Chancellor from that time until February 2002. The selection process for a new Vice Chancellor was commenced with a view to making an appointment by May 2002.

Higher education remains a very competitive field in which only the best will prosper. As a result of a series of strategic planning workshops, we are developing a vision for the future that focus on achieving and maintaining a sustainable future that flows through all aspects of the University - teaching, research and management. This vision is about using a framework based on the principles of global responsibility and equity and social justice to address ecological, technological, economic, social and cultural issues. By enacting our vision Murdoch will continue to offer one of the best education experiences a student can get. The credit for our current achievements goes to our academic and general staff, whose dedication and skills make Murdoch what it is. They are also responsible for taking Murdoch forward, under the guidance of Senate and the University's Senior Executive, towards our shared vision. Our goals are clear and will be built on the strong foundations laid over the past 26 years. The future for Murdoch is bright.

HIGHLIGHTS

Fiery speech marks Harmony Day Oration

Murdoch in 2001 hosted the inaugural West Australian Vice Chancellors' Harmony Day Oration, which was delivered by former Prime Minister Malcolm Fraser AC, CH. Mr Fraser told a packed audience that Australia had failed in its obligation to treat all people with respect, and was in breach of the Universal Declaration of Human Rights. On the issue of migrant detention, Mr Fraser said many countries treated such refugees more humanely than Australia had done; the country's behaviour was "a blot on our reputation and damages Australia's name as a compassionate and humane country". The Oration was a joint function between Murdoch and the WA Office of Citizenship and Multicultural Interests. It will rotate through Perth's universities annually on Harmony Day.



Australia's best university teacher

Murdoch University's Chair of New Media, Professor Duane Varan, won two out of seven prestigious national teaching awards, including the top award of University Teacher of the Year. Professor Varan won against strong opposition from across Australia to collect the \$35,000 Prime Minister's Award as the University Teacher of the Year and the \$40,000 Australian Award for University Teaching in Economics, Business and Related Studies. Professor Varan, also a finalist in the 2000 Awards, is one of Australia's foremost authorities on digital communication, marketing and interactive television. His winning application was supported by testimonials from business leaders and television and media professionals from around the world, as well as reports from his students.



World 'first' as students show Nike, Pizza Hut the way ahead

In a world first, Murdoch Business undergraduates are developing interactive advertising campaigns for some of the world's largest companies. The 16 marketing students are collaborating with Murdoch's Interactive Television Research Institute (ITRI) and a research consortium including Nike, Pizza Hut, Telecom New Zealand and advertising and media agencies Saatchi and Saatchi, Carat Interactive and Ogilvy and Mather. Operating from offices in Sydney and Wellington, New Zealand, the students are sharing existing information about interactive television technologies, and gaining valuable insights into the operations of some of the world's largest and most successful media agencies. By the end of the decade, interactive television is expected to be as integral to our television viewing experience as news, soaps and prime-time drama are now.

Boost for multi-million dollar environmental industry

Murdoch's new United Nations Environmental Technology Centre will enable Western Australia to play a major role in developing and applying environmental technology - an industry currently worth about \$8 billion in Australia and projected to grow to \$40 billion by 2011. The first of only four global United Nations Environment Program Centres, the Waalitj (wedge-tail eagle) Environmental Technology Centre will service a growing world demand for sustainable water supplies, energy, housing and sanitation systems. The UN will invest \$1.2 million in the Centre, in which more than 50 simple-to-use environmentally sustainable technologies have been used to showcase the practical use of new environmental technologies. The design incorporates

solar orientation, rammed earth walls, phase-change solar heating, photovoltaic roof panels and laboratories. The centre works closely with government and industry to develop sustainable, environmentally friendly technology.

First Indigenous Master of Law

School of Law graduate Hannah McGlade became the first Indigenous student of a Western Australian university to obtain a Masters in Law when she graduated recently. In another first, in 1994 she became the first Aboriginal woman to obtain a Bachelor of Laws from a Western Australian university.

Hands across the divide

Murdoch maintained its strong stance on Aboriginal advancement when students and staff combined to celebrate Reconciliation Week 2001, making it an occasion to be remembered. Placing their handprints in ochre on a calico banner, they built a symbolic Wall of Solidarity, collecting hundreds of signed prints to signify the University community's commitment to reconciliation between Indigenous and non-Indigenous Australians. Other activities during the week included Dreamtime story-telling, bush tucker stalls and orators at Speakers' Corner.

More for animal care

Veterinary services to the WA community have been enhanced further with the opening of a major new extension to the Veterinary Clinic. Designed primarily to house the Murdoch Pet Emergency Centre (MPEC), the building also includes a suite of seminar rooms and a student audiovisual resource room. Costing about \$2 million, the building covers some 553 square metres. It contains a new reception area, four consultation rooms, a large intensive care ward, a spacious treatment room as well as an isolation area and a 'quiet room' for noisy or timid animals to be accommodated away from the activities of the main intensive care unit. A grieving room is also provided for the comfort and privacy of distressed clients. The state-of-the-art equipment includes an oxygen cage, cardiac telemetry, defibrillator, pulse oximeters, a fully equipped laboratory and accommodation for 32 critical care patients. Staffed by about 15 veterinarians and nurses, the MPEC operates overnight during the week, and all day on weekends and holidays. Some 40 local veterinary practices have adopted the MPEC to provide after-hours services to their clients.



Hold the front page!

Murdoch's School of Media, Communication and Culture swept the pool at the annual Journalism Education Association Ossie Awards, winning one radio and two print journalism awards. And to cap a glittering occasion for Murdoch, Louise Perry won the award for Best News Story in Any Medium - the highest accolade for student journalism. Louise worked as a contributing journalist at The Australian and is now in Indonesia working with Associated Press (AP) on the first of a series of journalism placements arranged by the Murdoch-based Australian Consortium for In-Country Indonesian Studies. The placements provide practical, hands-on knowledge of the workings of the Indonesian media and a greater understanding of Indonesian society and culture.

Putting students first

Murdoch's Office of Student Services underwent a major re-engineering process in 2001 to simplify administrative arrangements for prospective and continuing students and to improve customer focus. These changes built on the recent introduction of Callista, a new, powerful student record system that interfaces with the University's Financial Services. By the end of 2001 students could download their results from the web, re-enrol on-line, change their personal details, and so on. This was paralleled in mid-2001 with a new and more secure student e-mail system, and the capacity for staff to load examination results directly into the software systems. These and other initiatives have led to greater convenience for students and academic staff, substantial increases in efficiency and cost-effectiveness, and will reduce clerical workloads in the future through greater automation.

New Dean brings industry experience

The new Executive Dean for the Division of Business, Information Technology and Law, Professor Catherine Smith, joined Murdoch University in January 2001. Professor Smith has held senior positions in major companies in Britain, and recently worked for three years at the University of Newcastle, as Foundation Chair of Business and Head, School of Business at its Central Coast Campus on the northern outskirts of Sydney. Professor Smith's work to make Murdoch a leader in the business field included the establishment of the Murdoch Business School from the amalgamation of Schools of Economics and Commerce.

Computer language for the world?

The School of Commerce has been asked by the National Office for the Information Economy to develop an extensive Business Reporting Language (XBRL). This will provide a brand new technology link between accounting information systems, financial reporting and the global business community, as a worldwide solution to the burgeoning number of accounting systems. In other computing-related successes, Murdoch's Centre for Bioinformatics and Biological Computing; provided support for the recently established WA Lotteries Commission State Microarray Facility; undertook research and development with industry partners Proteomics International Pty Ltd and Saturn Pty Ltd; and played an integral role in the recent success of the Centre for High-Throughput Agricultural Analysis.

School of Business formed

The Division of Business, Information Technology and Law has approved the establishment of a School of Business, which will be known as the Murdoch Business School. The School will be formed from the amalgamation of all staff in the two Schools of Economics and Commerce and will provide expert teaching, research and development services to the business community.

Environmental leaders

Furthering Murdoch's claim to be WA's leading environmental science campus, the School of Environmental Science established a series of environmentally sustainable activities for WA schools through workshops at the Environmental Technology Centre (ETC). These include a series of professional development workshops for teachers and interested parents in integrated, sustainable lifestyle practices such as organic food production, waste management, energy-efficient building and environmental art. The activities suit primary and secondary school curricula, while teaching children new life skills and conservation awareness. Associate Professor John Bailey has been appointed to chair the State's Conservation Commission and guide the development of a management plan for WA's old-growth forests.

Weather news from space

Murdoch's services to a wide community including farmers and fishers have been enhanced by the installation of a new \$1 million, state-of-the-art X-Band Receiver. Located on the roof of the Environmental Science Building, the satellite receiving facility is a joint project between Murdoch University, Department of Land Administration, CSIRO, the Department of Meteorology and Sea Space. It has a broad range of applications providing essential information to manage bush fires, drought, floods and the State's fisheries.

Breakthrough for skin cancer sufferers

WA's Solbec Chemicals has entered into a \$1 million research and development contract with Murdoch's Division of Veterinary and Biomedical Sciences to verify the effect of the company's new anti-cancer drug BEC. Cancers targeted by the drug include mesothelioma, melanoma, squamous cell carcinoma (SCC) and basal cell carcinoma (BCC). Trials have showed that tumour growth rates and size were reduced dramatically after treatment with BEC and survival rates increased from 17 per cent for non-treated mice to 80 per cent for treated mice. The research and development carried out at Murdoch will provide Solbec with data that may be directly transferable to the human regulatory register.

Power surge for remote regions

More than two hundred Aboriginal communities across Australia will receive electricity for the first time under a national joint venture project overseen by the Murdoch University-based Australian Cooperative Research Centre for Renewable Energy (ACRE). Communities across the far north of Western Australia, Queensland and the Northern Territory will have access to renewable energy under a \$28 million joint venture program underwritten by the Federal and State governments. The only renewable energy centre of its kind in Australia, ACRE will develop the project in partnership with Alice Springs based Centre for Appropriate Technology and the Aboriginal and Torres Strait Islander Commission (ATSIC). More than half of the 240 remote Aboriginal communities that will benefit from the funding are in Western Australia.

Award for Parker Centre

A Certificate of Achievement from AusIndustry has been awarded to the Murdoch-based AJ Parker Cooperative Research Centre for Hydrometallurgy. The Award, presented at an AusIndustry Business Networking function to celebrate Western Australian innovation, went to the Parker Centre for its "commitment to innovation and in particular for delivering excellent hydrometallurgy research to the minerals industry". AusIndustry is an arm of the Federal Department of Industry, Science and Resources.

Two from Murdoch on WA science council

Murdoch is the only university to have two representatives on the newly established Premier's Science Council. Professor Ian Ritchie from the School of Chemistry and Professor Peter Newman, Director of the Institute for Sustainability and Technology Policy join 12 council representatives from a range of disciplines and backgrounds. The team will oversee the expansion and improvement of research capabilities in Western Australia with the aim of establishing WA as a global leader in innovation-related activities.





Worldwide Indigenous meet at Murdoch

Murdoch University hosted a landmark international conference in July that saw a unique sharing of information between Indigenous and non-Indigenous communities. Speakers from as far afield as Canada, Africa, Indonesia and the United States gathered to discuss ways to improve services to developing and Indigenous communities, with a particular emphasis on governance and sustainable technology.

Murdoch film-maker up for an 'Oscar'

The film *Maangamizi*, by Murdoch filmmaker and lecturer Dr Martin Mhando, was accepted by the Academy of Motion Picture Arts for the 2001 Best Film Award in the Foreign Language Film category. The film, co-directed and co-produced by Ron Mulvihill, was shot wholly on location in Tanzania. Murdoch graduate David Esplin participated as assistant director. The film has won a number of Awards including Best Film and Best Actress (Zanzibar International Film Festival); Best Actress (Southern African Film Festival); 2nd Prize San Francisco Black Film Festival; and 2nd Prize in the Black Hall of Fame. *Maangamizi* is Dr Mhando's third feature film and is the first African film (South of the Sahara) to be nominated in the 'Oscars' Foreign Film category. It is also Tanzania's first entry in the Academy Awards.

WA 'dream-team' show the way

Ernie Dingo, Luc Longley, Andrew Vlahov and Richard Walley – four famous names who have combined with Murdoch University to make an inspirational TV documentary for young Western Australians. This 'dream-team' of basketball players and entertainers are using their long friendship and their love of basketball to show young people how dreams can be achieved through hard work and perseverance. It all began when Longley and Vlahov's fathers started a basketball team for young Aborigines - Ernie Dingo and Richard Walley shone out as star recruits who have since made big names for themselves as performers and entertainers. The documentary, narrated by Dingo, shows the four as friends and as role models for young Australians, particularly in Aboriginal and migrant communities.



Newslimited

Tourism Award for rural 'tapestry'

A project, which projects future scenarios in the 'tapestry' region created by a network of six WA country shires, has become a winner for project coordinator and Murdoch Tourism lecturer Dr Diane Lee and the WA node of the Cooperative Research Centre for Sustainable Tourism. The \$500,000 Tapestry project won the Minister's Encouragement Award at the 2001 Western Australian Tourism Awards. The project uses a simulation model to identify what is unique, rare and special about the 'tapestry' region. It looks at ways to expand sustainable tourism options; provides an understanding of tourism as a system; identifies visitor patterns and predicts the economic return and employment potential of tourism; and shows how the population and visitor numbers might affect tourism assets and activities.

Arts Dean wins top Award

Professor Kateryna Longley, the Executive Dean of Murdoch's Division of Social Sciences, Humanities and Education, won the 2001 Telstra Award as WA Businesswoman of the Year in the Shell Community and Government Sector. She also went to Canberra as a finalist from WA. There were more than one thousand applicants for the award, which was based on professional achievements, personal and community achievements, future goals and evidence of leadership skills. Professor Longley won the award for her inspiring work in making a business success of the newly-formed and widely-divergent Division and for her commitment to the arts, Indigenous affairs and community issues.

Top marks for film on asylum-seekers

'Perceptions of Place', a short documentary on the asylum-seeker debate which rocked Australia in 2001, took out first place in the open/tertiary category of the Centenary of Federation Youth Film Festival. Murdoch students Dominique Russell and Mike Albany directed the documentary, which was filmed in Port Hedland. 'Perceptions of Place' was short-listed from a number of entries and judged by an extensive panel of film experts from around Australia before being awarded the top prize. Also involved were producer Brett Beckingham and Perth DOP Peter Clarke.

National Award for Journalism PhD student

Estelle Blackburn, Media, Communication and Culture PhD student and a former journalist for The West Australian, the ABC and the Government Media Office, won the Walkley Award for Most Outstanding Contribution to Journalism for her investigative book 'Broken Lives'. One of Australian journalism's most prestigious awards, it was given for her six-year investigation which led to reopening the court cases of John Button and Darryl Beamish.

Festival of indigenous film

Murdoch University's strong commitment to supporting the aspirations and efforts of Indigenous Australians was boosted further in July when the Flash (blak) Flix Indigenous Film and Image Festival was held in Fremantle as part of the NAIDOC week celebrations. Organised by media studies lecturer Dr Sharon Delmege and Aboriginal and Islander Studies lecturer Denise Groves, the Festival screened short films and feature length films by Indigenous filmmakers. It attracted a large Indigenous and non-Indigenous audience over three nights, as well as gaining recognition for some talented Indigenous writers, directors, producers and actors.





Japanese scholarships top \$2 million

Murdoch Japanese language students have been awarded more than \$2.1 million in scholarships over the past decade to travel to Japan and improve their language skills. Since 1992, Murdoch students have won at least two Japanese government awards and one Western Australian government award every year. This record of international quality and success is unmatched by any university in Australia. In the past 10 years, 14 Murdoch students have passed Level-1 (near-native skills) in language exams in Japan.

Winners at the WA Screen Awards

The budding filmmakers in Murdoch's Technical Services Unit were big winners at the WA Screen Awards in August. Pierce Davison was crowned ABC TV WA Young Filmmaker and won the Dry Shand Award for his film 'The Apocalypso', while Mark Parish won the Kodak Award for Cinematography for the music video 'Animal', and School of Media, Communication and Culture students won the Express Award for Sound for the much-lauded film 'Enashell'.

Social Justice Network paves the way

A Social Justice Network (SOJURN) was set up at Murdoch to improve social justice for Western Australians and to increase understanding and knowledge. In order to maintain dialogue on these important and sensitive issues, it hosts industry breakfasts and seminars at regular intervals. Its membership includes partners from the Western Australian Council of Social Services, the Office of the Auditor General, the Department of Justice, Municipal Councils and Shires, Kulbardi Aboriginal Centre and social work agencies and institutions.

Positive ageing

With the ageing of the Australian community, Murdoch University is devoting considerable research into ways to help people enjoy a healthy and productive retirement. It has set up a special project 'Towards age-friendly communities' to explore ways in which Australian communities can enhance the social wellbeing of their older citizens. The study addresses a significant question at the heart of aged care: how to ensure older people can remain active members of their communities, without feeling isolated as they age. The research looks at different generations and people from varied economic and cultural backgrounds.

An Aboriginal point of view

Three important Indigenous studies at Murdoch University will make a significant contribution to Aboriginal development and history from a Nyungar perspective. They are:

Indigenous Tourism in the South West Region of Western Australia:

This project will create a southern Australian Indigenous Tourism inventory that emphasises the area's distinct regional tourism characteristics and preferences. A first of its kind in this area, it will establish a series of case studies and best-practice scenarios that highlight regional opportunities, and identify partnerships that will support Nyungar tourist development both from mainstream and Aboriginal partners. The project is funded by the first Indigenous Researcher Grant to be won by a university in Western Australia. Only eight such grants were available throughout Australia.

City of Cockburn, Aboriginal Oral History:

There is a widely diverse Aboriginal population in the Cockburn area and there was a significant risk of important historical and cultural information being lost if their stories were not recorded. Existing histories did not include a comprehensive narrative about the local Aboriginal people of the area. The oral history project collected previously unrecorded oral histories and provided information that has enabled Murdoch historians to develop an Aboriginal history of the Cockburn district.

Indigenous Interpretation of Murdoch University Campus:

At a speech welcoming Senator Aiden Ridgeway to Murdoch University in 2000, Nyungar elder Fred Collard recalled how, as recently as 30 years ago, Aboriginal people had camped and traveled throughout the current Murdoch campus and surrounding suburbs. Now that knowledge and history is to be researched and recorded from a Nyungar perspective in this study of the traditional and contemporary aspects of the 220ha occupied by the Murdoch campus. The study will look at:

- Nyungar place names in and around the areas occupied by the University campus;
- Nyungar land use, including any information on land forms and areas of economic and cultural importance;
- Nyungar knowledge of local flora, fauna, mineral and other natural resources;
- Contact between Nyungars and non-Aboriginal people in the area up until the 1850s; and
- Nyungar people associated with the site before or up until the 1850s.

It also will provide maps showing Nyungar place names and geographic features of the areas. The results will be transformed into a detailed virtual tour of the University's Aboriginal heritage sites that will be linked to the University's website.

Justice for all

A Murdoch academic is working with Justices of the Peace to improve their understanding of Aboriginal people. This includes cultural awareness training with local Indigenous people who talk about experiences including being taken from their families, life in missions, time spent in jail – and their successes too. Because JPs play a significant role in administering justice in Western Australia, tuition in Aboriginal culture adds considerably to their ability to make informed decisions on sentencing.

Media Frenzy for high school students

Journalists like to talk about a media 'feeding frenzy' when a big story breaks. And that's just what happened for 70 local high school media studies students who spent the second week of their July holidays at Murdoch's Media Arts Centre. They were taking part in the Media Frenzy workshop and experiencing a range of media activities, which included: producing radio and video clips; multimedia animations; conducting studio-based television interviews; and newspaper production. The event was so successful that Media Frenzy looks like becoming a regular event on the Murdoch calendar.

Migrant plights in focus at new Centre

Ethnic cleansing, evacuation, exodus, flight, resettlement, dislocation – these may just be words to some people, but to uncounted thousands they are a daily misery that is all too real. Professor Vijay Mishra has secured private funding to establish a Centre for Diaspora Studies at Murdoch. The Centre will aim to increase public awareness of the plight of migrants and the complex ways in which they are affected by such vast and emotional changes. 'Diaspora' refers to any group of people dispersed as a result of turbulent political and cultural processes.



Educators lead the way

Murdoch School of Education's Centre for Learning Change and Development is establishing a superb reputation for commercial and research opportunities that support the expertise available in the University. Murdoch staff this year worked on 24 different research and development programs, worth \$2.24 million, that were won and managed by the Centre. These include research into numeracy that could put Australia at the forefront of numeracy research internationally and establish Murdoch as an Australian leader in the field. And, with national concern about the educational standards achieved by boys, a project addressing their educational needs will investigate factors such as family, school and community environment, peer culture and student-teacher relationships, how they affect boys and girls, and how these factors may be addressed.

Rockingham strengthens ties between students and industry

In an initiative aiming to tighten relationships with industry and to enhance opportunities of graduate employment, Murdoch University's Rockingham campus launched the Structured Workplace Learning program in 2001. During this program, which fits with most degrees, businesses offer later year students a six-month work placement. Structured Workplace Learning gives students the opportunity to integrate classroom theory with workplace practice, giving them new and advanced skills directly relevant the needs of employers. It gives employers a chance to contribute not only to the training of an undergraduate but also provides an opportunity to have input into the quality and direction of their curriculum. More than 15 businesses are already involved in the program.

Microsoft on board for new engineering degree

The School of Engineering based at Murdoch University's Rockingham Campus launched a unique industry collaboration in computer education and training in late 2001. In association with software giant Microsoft and leading Western Australian IT company Alphawest 6, the School established a three-year degree in Network and Software Systems.

The new course provides a complete university degree, combined with a range of industry accredited training courses, including a complete Microsoft certified program of study. All students are required to undertake at least six months work-place experience that is fully accredited towards their Murdoch University degree.







2001

REPORT ON OPERATIONS

2001

MISSION AND VISION

Mission

To extend knowledge, stimulate learning, and promote understanding, for the benefit of the community.

In carrying out this mission Murdoch University aspires to be a world class university which is distinguished for:

Excellence in teaching and research

Research will be conducted to the highest international standards and will address contemporary problems and issues of significance to the community.

Teaching and learning will be informed by research, and by an understanding of how students learn. There will be a diversity of delivery modes to cater for the varied needs and circumstances of the student population.

Accessibility

The University will be a welcoming and accessible environment to students and staff from all backgrounds and will provide them with equality of opportunities to achieve the highest standards.

Interdisciplinarity

Studies will be sufficiently interdisciplinary or multidisciplinary to ensure that graduates can place their major field of knowledge into a broad context.

International Outlook

An international outlook will permeate the University's activities, to strengthen its reputation and prepare its graduates for life and work in an interdependent world.

Vision

The University will be a stimulating and exciting place in which to work and study, and as an institution, will be recognised as a good citizen. In pursuit of its mission the University community will hold to the following values and guiding principles:

- High quality research that addresses contemporary problems and issues of significance to the community;
- Teaching and learning that is underpinned by scholarship;
- Interdisciplinary and multidisciplinary approaches to knowledge and understanding;
- Consultative and responsive management practices that lead to improved performance;
- Integrity, tolerance, and mutual respect in dealing with others;
- Equality of opportunity, social justice, and environmental responsibility.

Objectives

This mission and vision will be achieved through the following Objectives:

Teaching and Learning

- To offer programs of study of the highest quality which ensure students can achieve their full potential;
- To provide a teaching and learning environment which achieves interpersonal interaction, interdisciplinary studies, flexible delivery and meets the needs of its students;
- To produce graduates noted for their academic qualities, employment skills and a commitment to life-long learning;
- To provide an environment in which teaching is equally valued with research as a professional commitment of academic staff.

Research

- To maintain a productive research culture with particular areas of national and international strength;
- To attract talented postgraduate research students and to provide high quality research training and supervision;
- To increase Murdoch's external funding base for research.

Accessibility

- To redress any under-representation of designated equity groups at all levels of the University's student profile;
- To redress any under-representation of designated equity groups at all levels of the University's staffing profile.

Interdisciplinarity

- To promote the practice of interdisciplinarity and multidisciplinary as an important element of a Murdoch education;
- To make the fostering of interdisciplinarity and multidisciplinary an integral component of the University's planning, budgeting and staffing activities.

International Outlook

- To integrate an international perspective into the main functions of the University;
- To offer a curriculum which prepares graduates for life and work in an interdependent world;
- To develop international and cross cultural competencies in staff and students;
- To increase income generated through international activities.

Management

- To recruit and retain an efficient, productive and effective workforce;
- To increase total income and diversify income sources;
- To manage human, financial and physical resources efficiently and effectively to meet the University's objectives.

University Standing

- To achieve a clear profile and a high reputation for the University in the general community;
- To achieve a clear profile and a high reputation for the University in the secondary school system and TAFE;
- To achieve a clear profile and a high reputation for Murdoch Alumni amongst employers.

Community Service

- To provide general community service projects which demonstrate commitment to the values of the University and advantage both the University and the community;
- To promote those aspects of the University's research and professional programs that have relevance to the wider community.

CHARACTERISTICS OF THE STUDENT POPULATION

Overview

The University has a broad based teaching profile covering eight of the ten major fields of study at undergraduate, postgraduate and research levels in four Divisions.

The proportion of the University's total student load by level of enrolment was research 5.6 per cent, higher degree by coursework 10.5 per cent, other postgraduate 3.8 per cent, undergraduate 79.8 per cent, and non-award 0.4 per cent.

Student load by Division was Business, Information Technology & Law 41%, Science 15 %, Social Sciences, Humanities & Education 36 % Veterinary & Biomedical Sciences 6 % and non-Divisional 2 %.

Principal Feature of the Year

1. Murdoch continues to be recognised for its excellence in teaching and research. One such highlight was one of the lecturers in our School of Commerce winning the Prime Minister's Award for the University Teacher of the Year and the Australian Award for University Teaching in Economics, Business and Related Studies.

Growth Plan

The University aims to consolidate and concentrate on its academic strengths and further develop the Rockingham campus.

Summary Statistics

1. Students
 - a) Student enrolments by level
 - b) Student enrolments by broad field of education
 - c) Student load by level
 - d) Student load by broad field of education
 - e) Completions by level
 - f) Completions by broad field of education
2. Staff Full Time Equivalent by function
3. Student Equity Statistics by group and broad field of education
 - a) Aboriginal and Torres Strait Islander
 - b) Female
 - c) Rural
 - d) Isolated
 - e) Low Socio-Economic Status
 - f) Non-English Speaking Background
 - g) People with a Disability
 - h) Summary percentage of population
4. Report of Operations - Commonwealth Operating Grant and Load

Summary Statistics

Student Enrolments

Level	1997	1998	1999	2000	2001
Higher Degree Research	654	649	668	705	710
Higher Degree Coursework	703	806	918	1,094	1049
Other Postgraduate	891	626	564	650	754
Undergraduate	8,883	9,479	9,855	9,749	9,967
Non-Award	21	48	61	99	131
Total	11,152	11,608	12,066	12,297	12,611

Broad Field of Study	1997	1998	1999	2000	2001
Agriculture, Environmental and Related Studies	696	664	608	596	557
Creative Arts	841	836	875	932	1017
Education	1105	1047	1039	1126	1338
Engineering and Related Technologies	180	190	180	167	182
Health	391	405	404	426	442
Information Technology	556	556	660	737	880
Management and Commerce	2228	2621	2804	2995	2820
Natural and Physical Sciences	1125	1172	1261	1324	1382
Non-Award	21	48	61	99	131
Society and Culture	4009	4069	4174	3895	3862
Total	11,152	11,608	12,066	12,297	12,611

Student Load (EFTSU)

Level	1997	1998	1999	2000	2001
Higher Degree Research	452	452	454	482	502
Higher Degree Coursework	517	541	722	1,022	942
Other Postgraduate	391	306	279	316	340
Undergraduate	6,307	6,760	7,129	7,115	7189
Non-Award	8	14	22	42	33
Total	7,675	8,073	8,606	8,977	9007

Broad Field of Study	1997	1998	1999	2000	2001
Agriculture, Environmental and Related Studies	435	445	394	404	355
Creative Arts	643	617	653	735	789
Education	624	646	674	705	799
Engineering and Related Technologies	115	128	123	109	127
Health	335	343	334	363	372
Information Technology	327	355	467	512	648
Management and Commerce	1846	2036	2285	2535	2312
Natural and Physical Sciences	801	853	937	994	997
Non-Award	8	14	22	42	33
Society and Culture	2541	2636	2716	2579	2574
Total	7,675	8,072	8,606	8,977	9,007

Completions

Level	1996	1997	1998	1999	2000
Higher Degree Research	74	63	79	72	62
Higher Degree Coursework	148	146	208	230	380
Other Postgraduate	231	237	217	199	260
Undergraduate	1,432	1,531	1,773	2,072	2,184
Total	1,885	1,977	2,277	2,573	2,886

Broad Field of Study	1996	1997	1998	1999	2000
Agriculture, Environmental and Related Studies	129	136	159	157	122
Creative Arts	154	182	188	237	234
Education	224	238	230	236	279
Engineering and Related Technologies	29	18	20	30	24
Health	70	78	142	105	74
Information Technology	77	65	89	140	156
Management and Commerce	380	456	632	652	887
Natural and Physical Sciences	143	178	197	224	321
Society and Culture	679	626	620	792	789
Total	1,885	1,977	2,277	2,573	2,886

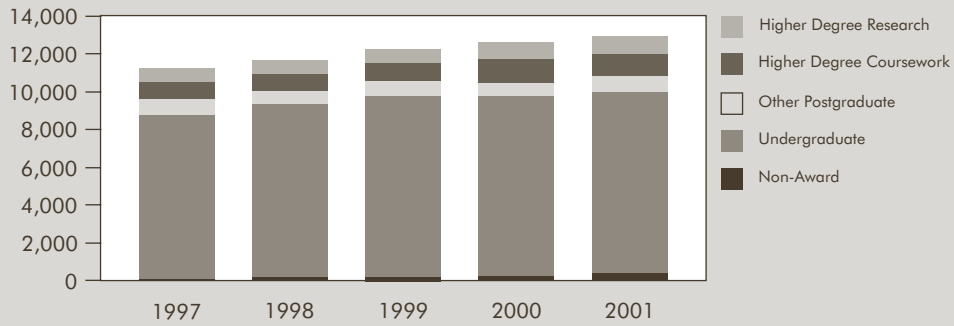
Staff - Full Time Equivalence (FTE)

Staff Function	1997	1998	1999	2000	2001
Teaching Only	111	117	92	114	125
Research Only	34	44	52	48	52
Teaching & Research	347	343	339	344	348
Other	18	16	17	23	28
Non-Academic	717	753	777	775	744
Total	1,228	1,273	1,277	1,304	1,297

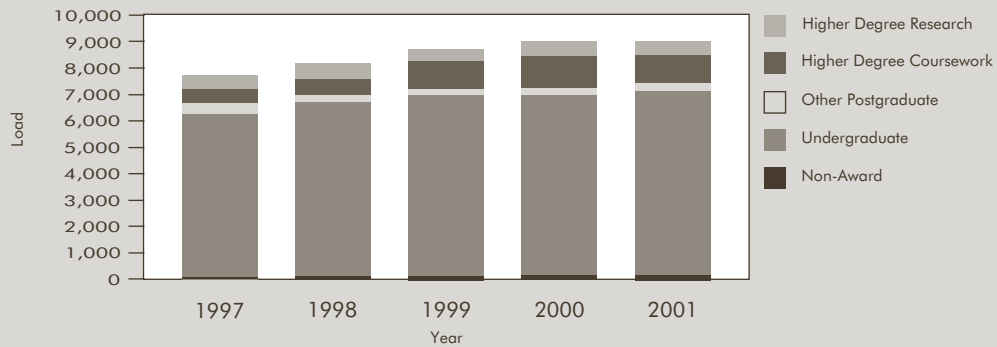
Student Load (EFTSU) per Teaching Staff FTE

	1997	1998	1999	2000	2001
Load/FTE Ratios *	16.1	16.7	18.5	17.6	17.2
*Excludes offshore student load					
Offshore students to be deducted from load/fte ratio	306	413	619	939	852

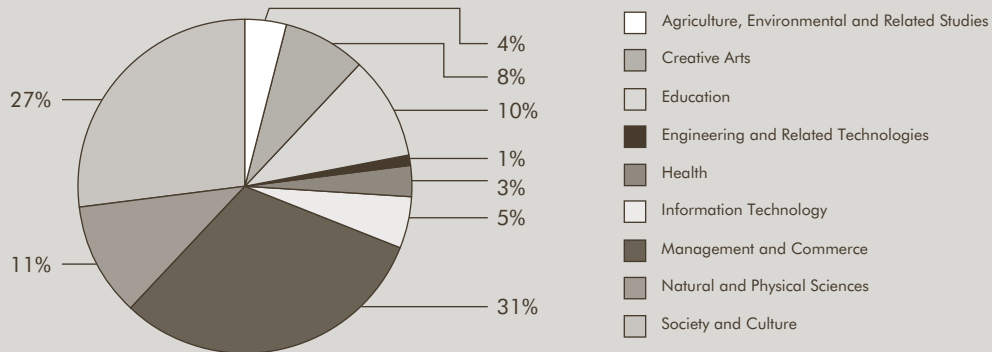
ENROLMENTS BY YEAR & LEVEL



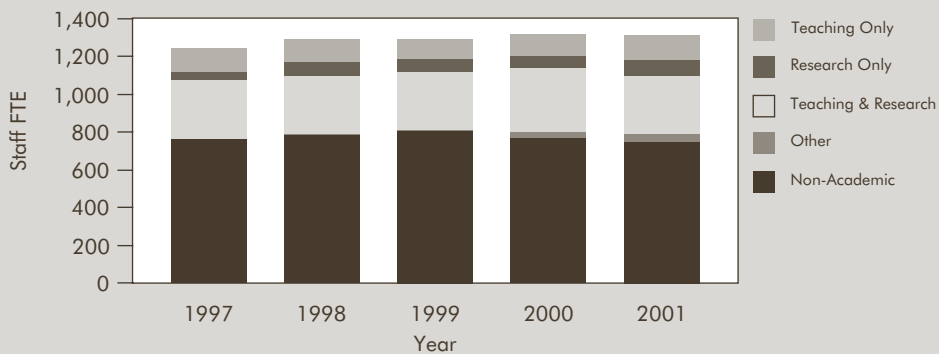
LOAD (EFTSU) BY YEAR & LEVEL



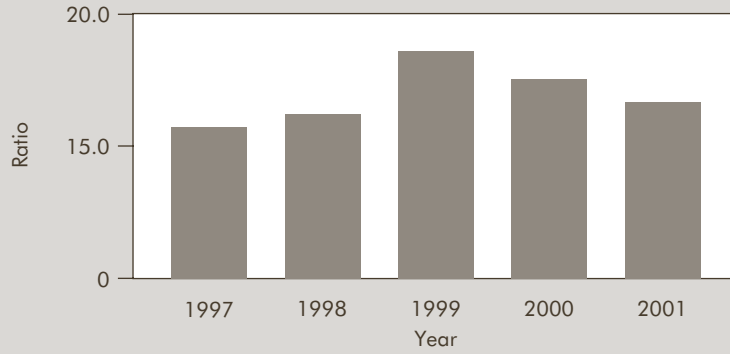
COMPLETIONS BY FIELD OF STUDY - 2000



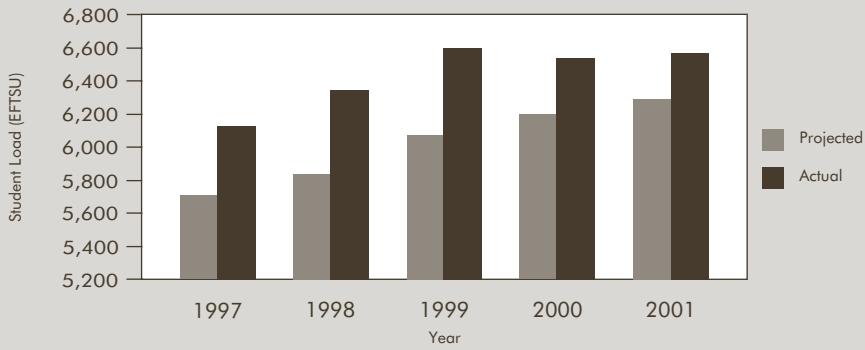
STAFF FTE BY FUNCTION & YEAR



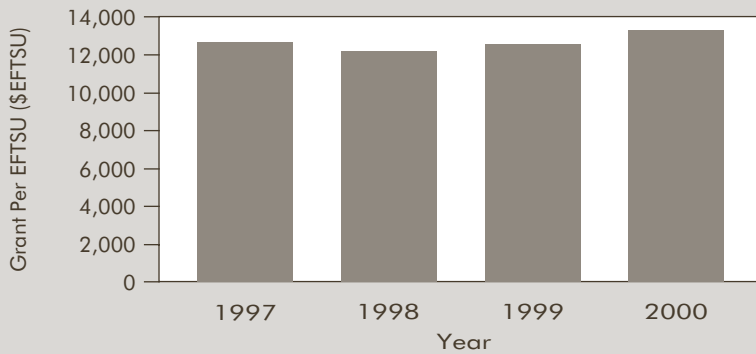
STUDENT LOAD (EFTSU) PER TECHING STAFF FTE



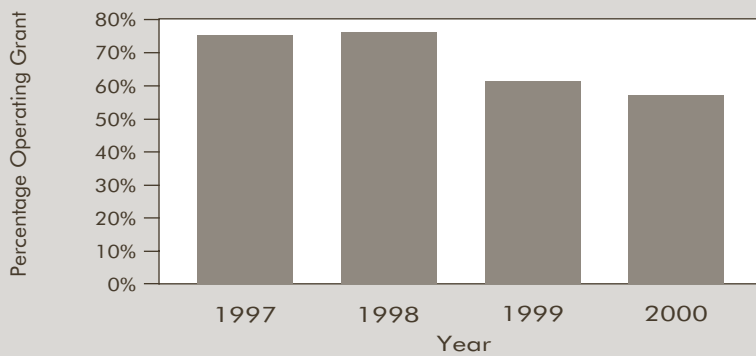
TARGET & ACTUAL OPERATING GRANT LOAD



OPERATING GRANT PER OPERATING GRANT LOAD



PERCENTAGE OPERATING GRANT OF TOTAL INCOME



Equity Student Statistics

Broad Field of Study	1997	1998	1999	2000	2001
Aboriginal & Torres Strait Islanders					
Agriculture, Environmental and Related Studies	3	4	4	4	3
Creative Arts	8	9	8	7	8
Education	10	9	7	8	21
Health	13	13	14	14	12
Information Technology	1		1	1	3
Management and Commerce	5	9	6	5	4
Natural and Physical Sciences		3	8	6	12
Society and Culture	40	84	89	106	119
Total	40	131	137	151	63
Female					
Agriculture, Environmental and Related Studies	366	365	339	333	295
Creative Arts	547	562	578	618	666
Education	858	841	837	912	1066
Engineering and Related Technologies	36	30	28	24	32
Health	265	281	288	304	320
Information Technology	100	107	143	153	188
Management and Commerce	1148	1342	1429	1509	1446
Natural and Physical Sciences	587	628	687	731	741
Non-Award	9	22	33	42	74
Society and Culture	2509	2591	2713	2562	2580
Total	6425	6769	7075	7188	7408
Rural					
Agriculture, Environmental and Related Studies	66	65	58	52	52
Creative Arts	41	37	39	36	29
Education	107	97	99	115	138
Engineering and Related Technologies	23	24	26	27	17
Health	59	54	57	62	51
Information Technology	38	38	34	44	35
Management and Commerce	63	75	94	96	88
Natural and Physical Sciences	79	82	96	106	107
Non-Award		1	1	4	7
Society and Culture	189	213	206	197	195
Total	665	686	710	739	719

Isolated

Agriculture, Environmental and Related Studies	73	60	54	45	44
Creative Arts	32	38	31	27	20
Education	144	133	119	154	149
Engineering and Related Technologies	15	15	14	10	12
Health	21	18	17	18	15
Information Technology	39	33	32	28	26
Management and Commerce	28	35	35	32	28
Natural and Physical Sciences	60	64	65	63	52
Non-Award	1		1	4	1
Society and Culture	142	144	134	132	105
Total	555	540	502	513	347

Low Socio-Economic Status

Agriculture, Environmental and Related Studies	171	174	139	150	122
Creative Arts	120	133	155	133	148
Education	332	296	303	368	445
Engineering and Related Technologies	50	55	55	56	53
Health	82	85	78	91	83
Information Technology	141	137	157	170	187
Management and Commerce	295	351	380	368	376
Natural and Physical Sciences	269	275	294	296	272
Non-Award	4	7	9	18	26
Society and Culture	841	869	885	854	830
Total	2305	2382	2455	2504	2542

Non-English Speaking Background

Agriculture, Environmental and Related Studies	13	13	13	12	8
Creative Arts	9	8	9	6	12
Education	18	11	9	6	8
Engineering and Related Technologies	6	5	5	2	9
Health	10	7	5	6	5
Information Technology	31	27	27	27	27
Management and Commerce	89	91	72	61	49
Natural and Physical Sciences	47	34	30	24	21
Non-Award	1	1	2	6	1
Society and Culture	74	52	51	46	40
Total	285	236	210	184	172

People with a Disability

Agriculture, Environmental and Related Studies	19	14	15	14	13
Creative Arts	23	30	29	30	39
Education	34	33	32	36	56
Engineering and Related Technologies	5	3	1		5
Health	7	8	8	7	4
Information Technology	15	17	26	26	36
Management and Commerce	30	38	47	59	63
Natural and Physical Sciences	32	34	39	40	60
Non-Award		2	1	4	4
Society and Culture	178	199	221	230	280
Total	301	334	375	402	508

Summary (Percent of Population)

Total Student Enrolments	11,152	11,608	12,066	12,297	12,611
Aboriginal & Torres Strait Islanders	0.4%	1.1%	1.1%	1.2%	0.5%
Female	57.6%	58.3%	58.6%	58.5%	58.7%
Rural	6.0%	5.9%	5.9%	6.0%	5.7%
Isolated	5.0%	4.7%	4.2%	4.2%	2.8%
Low Socio-Economic Status	20.7%	20.5%	20.3%	20.4%	20.2%
Non-English Speaking Background	2.6%	2.0%	1.7%	1.5%	1.4%
People with a Disability	2.7%	2.9%	3.1%	3.3%	4.0%



EQUITY 2001

2001 saw Murdoch University enhance its reputation for providing strong support to students and staff across equity areas. The University identified three priority groups for support: Aboriginal people and Torres Strait Islanders; people with disabilities; and people from low socio-economic backgrounds. Murdoch also provides equity support to people from non-English speaking backgrounds (students and staff), students from rural and isolated backgrounds, and women from non-traditional areas (students and staff). Murdoch continues to demonstrate a culture of valuing and supporting diversity within its student and staffing profiles, focusing on programs that enhance understanding of Indigenous issues in the University community.

The Student Equity Office provided academic support to members of equity groups to help them gain access to university education and, once enrolled, to help them to stay in study. An equity tutor working from the Teaching & Learning Centre provides tutorial support for equity students. Murdoch is the only Western Australian University with such a tutor and the appointment has enhanced academic liaison with students from equity groups.

Murdoch's UniQuest and UniAccess bridging programs have continued to provide pathways to tertiary study for students from equity groups and the University continues to offer scholarships to low income students in postgraduate fee-paying programs. Murdoch also receives funds from the Mick Young Scholarship Trust that provide cash awards to undergraduates from low socio-economic backgrounds. At the University's Rockingham campus, a number of students who gained entry through an equity entry programme received funds from the Gordon Smith Memorial Scholarship Trust.

The University is determined to improve the proportion of students and staff who live with a disability, and achieved significant successes in 2001. The number of enrolled students with disabilities grew from 551 to 599 during the year and there has been continued improvement in access and conditions for staff with disabilities. Murdoch has achieved the target of 4 per cent of the total number of staff set in its Strategic Plan for 1997-2001.

During the year, disability access was improved with better access in car parks, more disabled parking spaces, automatic doors for better access, upgraded signage and new pathways. A campus-wide access audit provided a springboard for the University to review and improve facilities on

campus still further. The audit will be reviewed in 2002 and will continue to provide direction regarding all forms of access.

In late 2001, Murdoch University joined the Liberated Learning Project with several Canadian universities, Stanford University (USA), Southampton University (UK), The Alexander Bell Institute, IBM, Central TAFE and the University of Southern Queensland, to develop and promote Speech Recognition technologies in the classroom. The IBM software enables the spoken word to be projected on screen as a remarkably accurate text to assist students with hearing disabilities. Experience elsewhere is that all students benefit from hearing the lecturer, and seeing the spoken word on screen in real-time. The lectures can easily be edited and delivered to all students online. This technology will be introduced progressively at Murdoch in early 2002, further supporting Murdoch's strategic direction in making higher education more accessible to students with disabilities.

A number of successful events highlighting equal opportunity were held throughout the year. These included:

- A "Wall of Solidarity" where Indigenous and non-Indigenous people from across the University community marked Reconciliation Week by placing ochre handprints on a calico banner;
- The Women In Leadership Program worked to increase the number of academic staff women's promotion applications, and their success rate, by setting up an Academic Staff Women's Promotion Support Group. In 2001 the Promotions Committee received a number of women's applications for senior positions. Many of these were assisted by the support group. The success rate was 100 per cent and a number of applicants said they would not have persisted in applying without the assistance from the group;
- The Inaugural Vice Chancellors Harmony Day Oration was delivered by the Rt Hon. Malcolm Fraser. The oration will be rotated annually among Perth's universities; and
- In August, the Director of Human Resources, Chris Jeffery, and the Manager of Equal Opportunity, Dr Casta Tungaraza, attended the United Nations World Conference Against Racism in Durban, South Africa. Discussions are underway to implement a program of action and possible diversity projects for Murdoch.

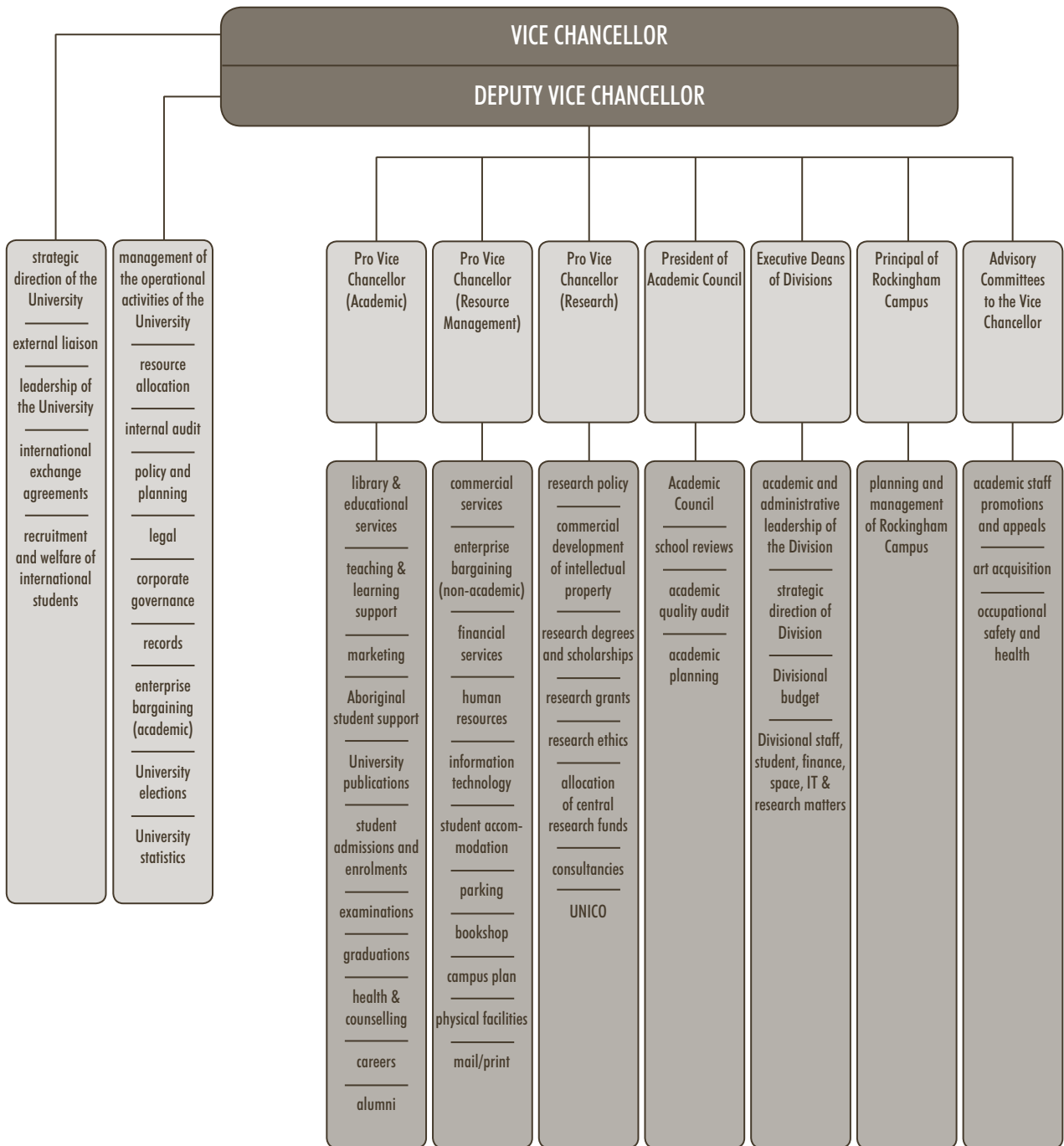
Report of Operations

Commonwealth Operating Grant and Load

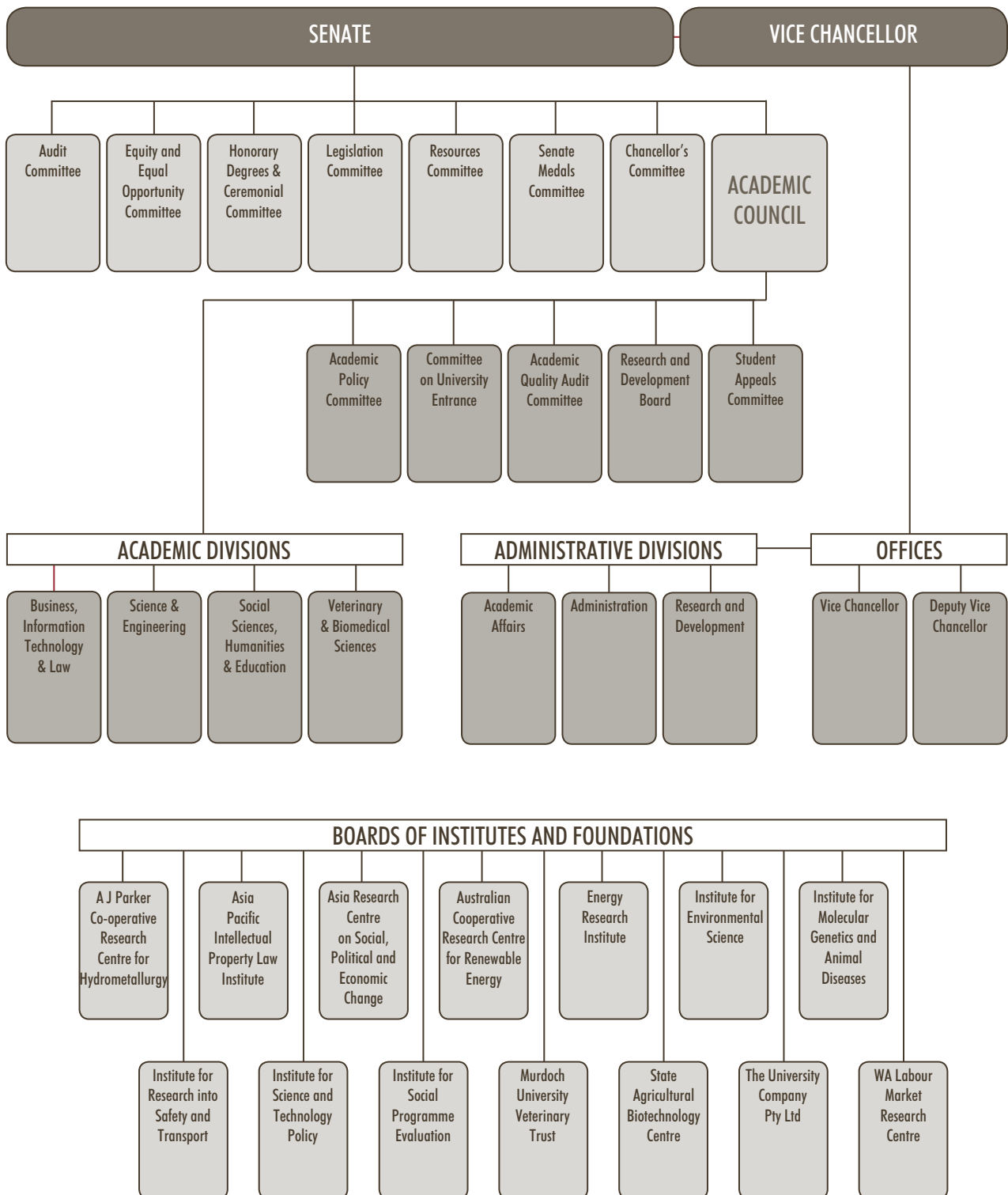
	1997	1998	1999	2000	2001
Operating Grant Load (EFTSU)					
Target	5,695	5,830	6,065	6,190	6,307
Actual	6,126	6,332	6,589	6,526	6,581
Variance (EFTSU)	431	502	524	336	274
Variance (%)	7.57%	8.61%	8.64%	5.43%	4.34%
Undergraduate Target Load (EFTSU)					
Target	4,730	5,050	5,340	5,530	5,670
Actual	5,148	5,561	5,929	5,883	5,933
Variance (EFTSU)	418	511	589	353	263
Variance (%)	8.84%	10.12%	11.03%	6.38%	4.64%
Funding Sources					
Operating Grant (\$000)	71,668	72,869	79,200	82,051	87,469
Operating Grant (at 2001 prices) (\$000)	76,855	76,911	82,314	83,823	87,469
Outside Research Grants & Donations (\$000)	13,038	15,550	15,500	19,877	20,177
Operating Grant per EFTSU (at 2001 prices)	12,546	12,146	12,493	12,844	13,291
Total Commonwealth Grant as a Percentage of Total Income	76%	76%	65%	60%	58%
External Research Funding (at 2001 prices)					
Number of Competitive Research Grants	188	174	175	147	164
Value of Competitive Research Grants (\$000's)	5,449	6,267	5,579	6,823	6,988
Value of Non-Competitive Grants (\$000's)	8,533	10,145	10,055	13,215	12,875
Total Research Grants (\$000's)	13,982	16,413	15,634	20,039	19,863
Index	1.072379	1.055468	1.039320	1.021599	1.000000
Cost Adjustment Factor*	1.033823	1.050387	1.066707	1.085211	1.108650

* from 2001 to 2003 Triennium Report (Appendix A, pg 217)

FUNCTIONAL CHART



ORGANISATIONAL CHART



OFFICERS OF THE UNIVERSITY

Visitor

- His Excellency the Governor of Western Australia

Chancellor

- The Hon. Frederick Michael Chaney, AO, LLB *W. Aust.*

Pro-Chancellor

- Emeritus Professor Geoffrey Bolton, AO, MA *W. Aust.*, DPhil *Oxf.*, PhD *W. Aust.*, HonDLitt *Murd.*, HonDUniv *Murd.*, FRHistS, FAHA, FASSA

Vice Chancellor

- Professor Steven Schwartz, BA Brooklyn, MS *Syr.*, PhD *Syr.*, FASSA

Deputy Vice Chancellor

- Professor Jeffrey Malcolm Gawthorne, BSc PhD *W. Aust.*

Pro Vice Chancellor (Academic)

- Professor Roger Charles Lethbridge, BSc PhD *Lond.*

Pro Vice Chancellor (Research)

- Professor Val Alder, BSc *Lond.*, ARCS *Lond.*, PhD *W. Aust.*

Pro Vice Chancellor (Resource Management)

- Mr Kevin Woods, BAppSc *Curtin*, GradDipHigherEd *Curtin*, GradDipScEd *Curtin*, MBA *W. Aust.*, FAIM (till 7/12/2001)
- Mrs Gaye McMath, BCom *Melb.*, MBA *Melb.*, FCPA, MAICD (from 10/12/2001)

University Secretary

- Mr Andrew Bain, BA (Hons) *ANU*

SENATE

Members Ex Officio

- The Hon. Frederick Michael Chaney, AO, LLB *W. Aust.* (9/2/2004)
- The Vice-Chancellor, Professor Steven Schwartz, BA *Brooklyn*, MS *Syr.*, PhD *Syr.*, FASSA (28/2/2002)
- Nominee of the Director-General, Department of Education, Mr Stephen Home, BEcon *W. Aust.* (till 18/9/2001)
- The President of the Guild of Students, Ms Alisha Ryans-Taylor, Mrs Margaret Banks (from 19/0/2001)

Members Elected by the Academic Staff

- Associate Professor Allan Barton, MSc, PhD, FRACI, FNZIC (9/11/2002)
- Associate Professor Ken Harrison, BSc *Melb.*, PhD *Monash* (1/8/2004)
- Dr Jim W. Macbeth, BCom *Br. Col.*, MA *Leeds*, PhD *Murd.* (25/9/2003)
- Associate Professor Jen McComb, BSc (Hons) *W. Aust.*, PhD *W. Aust.*, FAIAST, FTSE (28/10/2004)

Members Appointed by the Governor

- Emeritus Professor Geoffrey Bolton, AO, MA *W. Aust.*, DPhil *Oxf.*, PhD *W. Aust.*, HonDLitt *Murd.*, HonDUniv *Murd.*, FRHistS, FAHA, FASSA (10/9/2003)
- Ms Alison Gaines, BA(Hons) *W. Aust.*, MA *Murd.* (28/6/2002)
- The Rt Hon. Sir William Heseltine, GCB, GCVO, AC, QSO, BA *W. Aust.*, Hon DUniv *Murd.* (24/7/2003)
- Mr Malcolm Macpherson, BSc *Cant.* (10/9/2003)
- Dr Michael McCall MB, BSc *Adel.*, DPhil *Oxon*, FRACP (18/5/2002)
- Judge Kate O'Brien (15/5/2003)

Member Elected by non-academic staff

- Ms Pat Allen, BA *Durh.* (20/4/2002)

Members Elected by and from amongst the students

- Mr David Lindsay (31/12/2001)
- Mr Kevin White (31/12/2001)

Member Appointed by the Governor upon the Nomination of the Premier

- Mr Jeremy Buxton, MA *W. Aust.* (31/5/2001)
- Dr Sally Cawley, BA *W. Aust.*, PhD *NSW*, TeachCert *Claremont Tech. C.* (from 1/6/2001)

Member Appointed by the Governor upon the Nomination of the Leader of the Opposition

- Dr Sally Cawley, BA *W. Aust.*, PhD *NSW*, TeachCert *Claremont Tech. C.* (from 22/5/2001)
- Mr Jeremy Buxton, MA *W. Aust.* (from 10/8/2001)

Members Elected by Convocation

- Ms Helen Shurien (31/12/2003)
- Ms Marion Slany BA (31/12/2002)
- Ms Mara West (from 17/4/2001)

Members Co-opted by the Senate

- Mr Richard Lester (from 22/5/2003)
- Mr Robert Pett, BA, MA(Econ) *Qu.* (31/12/2002)
- Prof Malcolm Richmond BSc, BCom *UNSW*, FAIM (3/4/2003)

Except where indicated otherwise, the date in brackets is the date of expiry of the term on Senate.

RESEARCH REPORT 2002

The vital role played by Australia's universities in the research and innovation system was highlighted in January 2001 with the release of *Backing Australia's Ability: An Innovation Action Plan for the Future*. It acknowledged that universities are the nation's leading providers of training for our future research workforce and that they generate much of the new knowledge essential to Australia's long term economic growth and social cohesion. Murdoch University is an important partner in this training, with a wealth of research that makes a difference to our community.

Murdoch was founded 26 years ago as a research university and plays a crucial role in the national research and innovation system. It is major contributor to the generation and transmission of knowledge, as demonstrated by its Top-10 ranking among Australian universities, in terms of providing training to research students measured as a proportion of total student enrolments¹, and in terms of the total number of books authored². These achievements are even more notable given that Murdoch is ranked 30th of Australia's 38 public universities in terms of total undergraduate student enrolments.

Performance against new funding arrangements

Public funding for research increasingly is being tied directly to performance in line with the increasing importance of the links between university research, the national innovations system and Australia's economic competitive advantage, wealth creation and standard of living. Implementation of the new system began in 2001 by way of introduction of the Research Training Scheme (RTS). It allocates higher degree research student places to institutions through a performance-based formula.

In 2001, Murdoch ranked 12th nationally in research performance as measured by the allocation of the RTS as a proportion of total Commonwealth operating grant (See Table 1).

Table 1. 2001 Research Training Scheme Allocations

Rank	Institution	Research EFTSU ³	RTS	Undergraduate EFTSU	Operating Grant (OG)	RTS/OG
1	The University of Western Australia	1130	\$26,104	8880	\$96,133	0.27
2	The University of Melbourne	2309	\$53,791	18455	\$210,556	0.26
3	The University of Adelaide	897	\$23,501	8670	\$102,016	0.23
4	The University of Sydney	2205	\$53,232	21175	\$243,721	0.22
5	The University of Queensland	2025	\$47,512	19295	\$219,312	0.22
6	The University of New South Wales	1500	\$37,551	15765	\$184,923	0.20
7	Monash University	1619	\$39,023	21270	\$228,289	0.17
8	University of Wollongong	502	\$12,221	7370	\$79,115	0.15
9	University of Tasmania	504	\$12,845	8355	\$91,251	0.14
10	Flinders University	461	\$10,385	7060	\$75,384	0.14
11	Macquarie University	572	\$11,994	9665	\$92,618	0.13
12	Murdoch University	332	\$8,295	5975	\$67,340	0.12

Source: DETYA Higher Education Report for the 2001 – 2003 Triennium

¹ Higher degree research students as a percentage of total students in 2001 (DEST, Higher Education Report to the 2002-2004 Triennium)

² Australian Vice Chancellors Committee Research Statistics, 2002.

³ Equivalent Full Time Student Unit

Murdoch's particular competitive advantages will ensure it continues to extend and improve on this research and research training performance. They include a high percentage of research active staff (92 per cent) and a high proportion of staff at academic level A and above with PhDs (65 per cent). In addition, Murdoch has long-standing links with the public and private sectors - locally, nationally and internationally - derived from Murdoch's original interdisciplinary approach that continues today.

Collaborative Research

Murdoch remains committed to excellence in research, research development and research training, and believes in fostering collaboration rather than competition. This commitment is reflected in Murdoch's success in the Commonwealth-funded Co-operative Research Centre (CRC) Program. A major aim of the Commonwealth funded CRCs is to promote high quality collaborative research between Australian institutions and industry. Murdoch currently hosts two successful Cooperative Research Centres (CRCs) and is a node to four others:

- The AJ Parker Centre for Extractive Hydrometallurgy. The AJ Parker Centre, established in 1992, has been supported for a second seven-year period from 1999 with grant funds of \$18.5 million. The Centre has a full-time equivalent research staff of 75 and 46 postgraduate students. The total resources for the Centre over its grant life total \$109 million. It has just passed a successful second-year review. This CRC exemplifies Murdoch's collaborative spirit with other universities, industry, State and Federal Governments. The university partners include Curtin University of Technology, Murdoch University and The University of Queensland. The government partners include the CSIRO Division of Minerals and the WA Department of Minerals and Energy. The Parker Centre is the leading Centre worldwide in this field and includes the following industry partners: Acacia Resources Ltd, Australian Mineral Industries Research Association Ltd, BHP Research & Technology Development, Comalco Aluminium Ltd, Nabalco Pty Ltd, Normandy Mining Limited, Pasminco Limited, Queensland Alumina Ltd, Resolute Limited, Technology Resources Pty Ltd, WMC Corporation Ltd and Worsley Alumina Pty Ltd.
- The Australian Cooperative Research Centre for Renewable Energy (ACRE) (and Related Greenhouse Gas Abatement Technologies). The Centre was established in 1996 for seven years with an average CRC funding of \$1.6 million per annum, and \$10.3 million in total resources per annum. It has 50 full-time equivalent research staff and 16 postgraduate students. ACRE is widely supported by industry. Partners include: Integrated Technical Services Pty Ltd, ZBB Technologies (Australia) Ltd, Westwind Turbines Ltd, Western Power Corporation, Silicon Technologies Australia Limited, Energy Australia, Australian Inland Energy, Powercorp Pty Ltd, PowerSearch Ltd, Industrial Research Limited (NZ) and ANUTECH Pty Ltd. In addition, it embodies an Australia-wide collaboration of universities including Northern Territory University, Murdoch University, Curtin University of Technology, Queensland University of Technology, University of Newcastle, The University of New South Wales, University of Technology Sydney and The Australian National University. Government partners include the Power and Water Authority, Northern Territory, and Division of Applied Physics, CSIRO. It also includes the Centre of Appropriate Technology (CAT) Inc.

In 2001, Murdoch was involved as a node in the following CRCs:

- The CRC for Sustainable Tourism
- The CRC for Molecular Plant Breeding (CRCMPB)
- Australian Sheep Industry CRC
- CRC for Beef Quality

Locally, Murdoch has experienced significant success in the WA State Government Centres of Excellence for Industry-Focused R&D Program. A condition of such funding is that the centres must be collaborative, involving at least one other organisation, with identifiable practical benefits to the economy. The centres are:

- WA State Agricultural Biotechnology Centre (SABC)
- The Western Australian Biomedical Research Institute (WABRI)
- The Centre for High-throughput Agricultural Genetic Analysis (CHAGA)
- The Environmental Technology Centre
- The Centre for Organic Waste Management
- Intelligent Process Operations Management
- Australian Centre for Renewable Energy (ACRE Lab)

The University's significant investment into R&D is leading to successful commercial outcomes through the creation of new ventures to develop and exploit research findings. The generation of these new enterprises can be more effective than simply licensing intellectual property (IP) to existing companies and can generate a multiplier on the University's investment. To this end, the University Company (UNICO) has developed three spin-off companies to commercialise Murdoch's IP, bringing the total number of research spin-off companies to five.

Research Strengths

Murdoch has six established and two emerging areas of research strength. These areas provide the focal point for Murdoch's research and research training activities. They incorporate researchers who are prominent in most of the research centres in the University and together they are responsible for attracting 80 per cent of the University's reportable research income.

These Areas of Research Strength, provide substantial interdisciplinary teams of highly productive researchers to address significant research problems from all perspectives. The recognised areas are:

Agricultural and Veterinary Biotechnology	Includes the State Agricultural Biotechnology Centre, unique in Australia and the only WA Centre recognised in the top 50 national centres of excellence and contains three state centres of excellence programs.
Contemporary Asia	This incorporates the Asia Research Centre (previously an ARC special research centre funded since 1991) with research and consultancy strengths. Areas include environmental science, economics, law, biomedical and veterinary science.
Hydrometallurgy	Mineral Processing and purification – Incorporates the internationally leading AJ Parker CRC in hydrometallurgy, established 1992. Collaboration and support from mining industry.
Social Change and Social Equity	Research into social and psychological issues following major change. Positive ageing, social justice and educational consultancies are key foci.
Technologies and Policies for Sustainable Development	Incorporates the Australian CRC for Renewable Energy (ACRE), two State Centres of Excellence for Environmental Technology and Organic Waste Management, and the United Nations International Environmental Technology Centre.
Terrestrial and Aquatic Ecosystem Management and Restoration	This group works with many aspects of WA's natural resources, It receives substantial funding from the Fish Research and Development Corporation and the Grains Research and Development Corporation.

The University has also identified two areas of emerging research strength in:

Bioinformatics and Bio Statistics	Incorporates the ANGIS node and multiple international collaborations, links strongly to biomedical research.
Intelligent Systems and Software Development for Process Operation Management	Incorporates one State Centre of Excellence and has strong industry links.

At least eight members of the University are Fellows of Australian or International scholarly Academies, and a relatively high proportion of its academics sit on the new Australian Research Council Expert Advisory Committee, (Professor Richard Hobbs, Professor Richard Oliver, and Professor David Andrich) attesting to our national research recognition. Other notable achievements include the award that Dr Una Morgan won at the inaugural Federal Minister's Prize for Achievement in Science. One of our early career researchers, Dr Morgan's award was for her internationally recognised work on the waterborne pathogen *Cryptosporidium*.

Research Training

Murdoch University continues its strategy to grow the number of research students to 7 per cent of total student load by 2003. In September 2001 it had 712 Higher Degree Research (HDR) students which is 5.6 per cent of total student numbers. Murdoch is currently funding 10 students without DETYA support by the award of fee waiver scholarships.

The emphasis in the HDR program is on high quality research with a high quality thesis and satisfactory employment outcomes for students. Murdoch is producing a supervisor database to further improve the matching of supervisors to students.

The multi-disciplinary nature of Murdoch's undergraduate and postgraduate program courses and our close and personalised supervision have made Murdoch University particularly attractive to mature students, many of whom bring considerable experience and skills from the workplace to research groups. Demand for places from well-qualified applicants is high; however, the ability of students to accept entry into a program of study is limited by the availability of scholarships.

Financial Support

Murdoch has a number of strategies to assist students to obtain financial support, including additional, partial or fully-funded scholarships from within and outside the university. Murdoch actively seeks collaborative postgraduate training programs in which part of the research experience is obtained externally in a commercial, government, or industrial setting with combined supervision.

Surveys of existing students, exiting students and non-completing students and focus groups are regularly conducted at Murdoch. A major strength and competitive advantage of Murdoch University in research training is that it encourages multidisciplinary research and intellectual freedom. This makes a significant contribution to the quality of the research training experienced by research students.

The success of Murdoch's strategies to support its research students is demonstrated by a survey showing the students consider Murdoch University successfully achieves its educational objectives. Student opinion shows that the research training has developed their critical thinking skills (96 per cent); their professional skills (91 per cent); and has extended them intellectually (95 per cent). A total of 82 per cent strongly agreed or agreed they were satisfied with the quality of supervision for their research.

MurdochLINK – a powerful force for research

In 2002 the Division of Social Sciences, Education and Humanities (SSHE) will build on existing Murdoch University links with the wider community to provide a powerful new service that will assist researchers in SSHE and Murdoch University generally. MurdochLINK will provide top-class consulting and research services to the professions, industry and government by establishing industry-focused teams of experts to provide practical and cost-effective business solutions.

A MurdochLINK office within SSHE will become a "one stop shop" where industry, government and the community can gain access to University expertise in training and development, expert advice, research and development, materials and product development, and review and evaluation. Internally, it will provide professional project management services and assist researchers to develop grants, tenders and other proposals. It will facilitate linkages amongst the participating centres and areas of research strength, and manage external consultants.



TEACHING AND LEARNING

Murdoch University continued to maintain its very high reputation from teaching and learning as recognised through statistical data from Federal government sources and independent publications such as the Good Universities Guide.

Dr. Duane Varan is one such testimony to Murdoch's standards as the 2001 winner of the Australian Teaching Excellence Award in the Economics and Business section, and the overall winner of The Prime Minister's Award for Excellence. These are the most prestigious teaching awards on a world-wide basis.

Murdoch continued to promote alternative equity access pathways to the University through a new 'bridging program' centred on the Rockingham Campus, and further successful expansion of the pre-Law selection program for Indigenous students. Additionally, a foundation unit within Murdoch's First year program was offered to a significant number of Year 12 students in the Rockingham environs, and this will be further expanded to include Mandurah schools in 2002.

A new Chiropractic degree program was developed in close collaboration with the profession for introduction in 2002, and has received a large number of applications from high calibre students. More generally, the University experienced significantly higher first preferences from prospective students seeking 2002 entry.

Murdoch College, which is closely affiliated with the University, grew from 235 students in February 2000 to more than 500 by the end of 2001, with more than 150 students graduating from either Year 12 or the WA Universities Foundation Program. There has also been a major increase in the number of Australian students studying at the College, with a substantial number of new Year 8 students already enrolled for 2002.

STUDENT SERVICES

The Office of Student Services underwent a major re-engineering process in 2001 to simplify administrative arrangements for prospective and continuing students and maximise customer focus.

These changes build upon the recent introduction of Callista as a more powerful student record system that also interfaces with the Office of Financial Services. During the year Callista's web interface (Callista Connect) was rigorously tested before being run as a live production platform. Thus, by the end of 2001, it was possible for students to download their results from the web, re-enrol online and change their personal details. This was paralleled in mid-2001 with the roll-out of a new and more secure student e-mail system, and the capacity for staff to load examination results directly into the software systems. These and numerous related initiatives have led to greater convenience for students and academic staff, substantial increases in efficiency and cost-effectiveness, and will reduce clerical workloads in the future through greater automation.

STUDENTS WITH DISABILITIES

In late 2001, Murdoch University joined the Liberated Learning Project with several Canadian universities, Stanford University (USA), Southampton University (UK), The Alexander Bell Institute, IBM, Central TAFE and the University of Southern Queensland to develop and promote Speech Recognition technologies in the classroom.

The IBM software developments enable the spoken word to be projected on screen as remarkably accurate text to assist students with hearing impairments. It is also evident that all students benefit from both hearing the lecturer, and seeing the spoken word on screen in real-time. Moreover, the lecture content can easily be edited and delivered to all students online – further supporting their understanding and learning skills.

The Speech Recognition technology will be introduced progressively at Murdoch commencing in early 2002, further supporting Murdoch's strategic direction in making higher education more accessible to students with disabilities.



INTERNATIONAL OUTLOOK

International students are very important to Murdoch University for the breadth of experience and cultural perspective they bring to the University community. Accordingly, Murdoch makes a significant effort to attract international students and provides a significant support service to all its overseas students.

In 2001, increasing numbers of students came to Murdoch from new markets such as Scandinavia, Africa and North America. Numbers from established markets also showed strong growth, as did the Veterinary School, with large numbers of students enrolling in both first and second semesters.

The university's plans to increase the number of Murdoch students seeking an international experience with a study abroad program were very successful, with an increase of more than 30 per cent in enrolments for 2002.

A concerted and planned approach to 'domestic' international students resulted in the development of positive alliances with a wide range of 'feeder' institutions in Perth. The signing of a Memorandum of Agreement with TAFE International will establish links between Murdoch University and international students studying in TAFE Colleges in Western Australia.

The horrific events of September 11 in New York resulted in the cancellation of a number of planned marketing activities in North America in the latter part of the year. Murdoch University's prompt and comprehensive response to September 11, and the extensive pastoral support provided to international students, were well received by our North American partners and worried parents from around the world. Australia's reputation for safety and political stability is expected to enhance the number of students from the region seeking a 'safe haven' for their study abroad experience.

A move to better premises in November 2001 also increased the effectiveness of the student support services and the productivity and morale of the Murdoch International staff.



AUDITOR GENERAL

To the Parliament of Western Australia

MURDOCH UNIVERSITY PERFORMANCE INDICATORS FOR THE YEAR ENDED DECEMBER 31, 2001

Scope

I have audited the key effectiveness and efficiency performance indicators of Murdoch University for the year ended December 31, 2001 under the provisions of the Financial Administration and Audit Act 1985.

The University Senate is responsible for developing and maintaining proper records and systems for preparing and presenting performance indicators. I have conducted an audit of the key performance indicators in order to express an opinion on them to the Parliament as required by the Act. No opinion is expressed on the output measures of quantity, quality, timeliness and cost.

My audit was performed in accordance with section 79 of the Act to form an opinion based on a reasonable level of assurance. The audit procedures included examining, on a test basis, evidence supporting the amounts and other disclosures in the performance indicators, and assessing the relevance and appropriateness of the performance indicators in assisting users to assess the University's performance. These procedures have been undertaken to form an opinion as to whether, in all material respects, the performance indicators are relevant and appropriate having regard to their purpose and fairly represent the indicated performance.

The audit opinion expressed below has been formed on the above basis.

Audit Opinion

In my opinion, the key effectiveness and efficiency performance indicators of Murdoch University are relevant and appropriate for assisting users to assess the University's performance and fairly represent the indicated performance for the year ended December 31, 2001.

D D R PEARSON
AUDITOR GENERAL
May 2, 2002

KEY PERFORMANCE INDICATORS

Introduction

In 2001, the University continued to implement the Strategic and Quality Improvement Plan 1997-2002. This plan expands and enforces the directions established by the University Senate and Vice-Chancellor Steven Schwartz. The key performance indicators support the two key goals of teaching and learning, and research. Where possible these are reported for five years.

Murdoch University's Mission

To extend knowledge, stimulate learning and promote understanding for the benefit of the community.

Summary of Indicators

Teaching and Learning

Effectiveness Indicators

- Students Progress and Completions
 - i) Student Progress Rate
 - ii) Course Completion Rate
- Interdisciplinarity
 - iii) Percentage of students undertaking two majors from different fields of education.
- Quality of Graduates
 - iv) Employment and Study Destination Survey
- Quality of Teaching
 - v) Perceived Quality of Teaching - Course Experience Questionnaire
 - vi) Student Evaluation of Teaching
- Efficiency Indicators
 - vii) Ratios of total operating and teaching related expenditure to total load (EFTSU)
 - viii) Ratio of teaching staff FTE per successful EFTSU

Research

Effectiveness Indicators

- Research Funding
 - ix) Research Funding: A National Comparison of Research
- Research Income
 - x) Income per 10 Research Staff FTE
- Higher Degree by Research Completion
 - xi) Higher Degree by Research Completions per 10 Research Staff FTE

Efficiency Indicators

- Research Publications
 - xii) Number of publications per 10 Research Staff FTE
- Student progress and completion
 - xiii) Time to completion of Higher Degree by Research Students

Excellence in Teaching and Learning

Goal:

To achieve excellence in teaching and learning which is informed through research and by an understanding of how and why students learn.

Objectives

- To offer courses of the highest quality which ensure students can achieve their full potential
- To provide a teaching and learning environment which achieves interpersonal interaction, interdisciplinary studies, flexible delivery, and meets the needs of its students
- To produce graduates noted for their academic qualities, employment skills and a commitment to life-long learning
- To provide an environment in which teaching is valued as a professional commitment of academic staff is demonstrated by the students' perceptions of the quality of the teaching

Desired Outcomes

- For students to achieve their full potential by successfully completing their units of study
- For students to achieve their full potential by successfully completing their course
- To achieve a minimum of 20 per cent of students undertaking two majors of study from different fields of education
- To produce graduates who demonstrate their commitment to lifelong learning by undertaking further study or gain employment
- To maintain student satisfaction with the quality of teaching, as measured by the Course Evaluation Questionnaire, above the national mean
- To maintain the rate of student satisfaction with the quality of teaching above 80 per cent, as measured by unit surveys.

Effectiveness Indicators

The University presents six performance indicators to demonstrate how effectively it is working to achieve its teaching and learning goals, objectives and desired outcomes. The indicators demonstrate the students' progress and completions rates, the quality of graduates, the quality of teaching and the success towards promoting interdisciplinary study.

Student Progress and Completions

The University's objective is to offer courses of the highest quality which ensure students can achieve their full potential. There are two desired outcomes. First is for students to achieve their full potential by successfully completing their units of study and the second is for students to achieve their full potential by successfully completing their course(s). The indicators of student achievement are the Student Progress Rate and the Program Completion Rate.

i) Student Progress Rate

This is an indicator of student achievement. It compares the proportion of student load achieving a passing result to the total enrolled load. Load is generated by the number of credit points in which a student is enrolled as a proportion of twenty-four points. Twenty-four points represents a full-time work load for one year. The load taken by Higher Degrees by Research students has been excluded from the calculation, because it is not finally assessed on a semester or annual basis.

The data for this indicator are extracted from the Murdoch University submissions of Commonwealth Student Data Collections. The higher education classification system was replaced in 2001 with the Australian Standard Classification of Education and historical records have been translated to the new classifications.

The results shown are the percentage of the enrolled load that successfully completed. The reverse of the result includes the percentage that failed or withdrew after the Census Date without academic penalty. The Census Date is used for Federal Government statistical and other collection purposes.

Broad Field of Education	1997	1998	1999	2000	2001
Agriculture, Environmental and Related Studies	84%	86%	84%	85%	85%
Creative Arts	85%	85%	87%	85%	88%
Education	81%	84%	86%	89%	88%
Engineering and Related Technologies	75%	73%	78%	76%	77%
Health	97%	96%	97%	97%	97%
Information Technology	74%	75%	80%	80%	81%
Management and Commerce	88%	86%	88%	87%	87%
Natural and Physical Sciences	79%	82%	84%	84%	83%
Society and Culture	85%	85%	94%	83%	84%
Non-Award	93%	91%	85%	91%	89%
Total	85%	85%	86%	85%	86%

ii) Course Completion Rate

This is an indicator of student achievement. This indicator measures the rate at which Murdoch students successfully complete their course. The data for this indicator are extracted from the Commonwealth Student Data Collections. The higher education classification system was replaced in 2001 with the Australian Standard Classification of Education and historical records have been translated to the new classifications.

The data consist of full-time internal students undertaking a three year bachelor degree and are presented by broad field of education. Veterinary Studies is in accordance with the new Standard Classification included in Health, however since 1997 it has been treated as a five year course. Education is no longer offered as a three year degree.

Broad Field of Education	1996 - 1997	1997 - 1998	1998 - 1999	1999 - 2000	2000 - 2001
Agriculture, Environmental and Related Studies	0.75	0.78	0.81	0.70	0.83
Creative Arts	0.79	0.73	0.73	0.77	0.73
Education	0.47	0.87			
Engineering and Related Technologies	0.84	0.69	0.60	0.67	0.68
Health	0.91				
Information Technology	0.82	0.70	0.64	0.74	0.73
Management and Commerce	0.80	0.77	0.76	0.77	0.79
Natural and Physical Sciences	0.69	0.71	0.69	0.72	0.73
Society and Culture	0.72	0.71	0.67	0.60	0.64
Total	0.77	0.72	0.72	0.72	0.73

Interdisciplinarity

From its inception in 1974 Murdoch University has been committed to interdisciplinarity. Interdisciplinarity exposes students at the unit of study level to themes and issues not directly allied to the narrow confines of a single discipline. In 2001, that fundamental guiding principle remains strong. The University has the objective to provide a teaching and learning environment which achieves interpersonal interaction, interdisciplinary studies, flexible delivery, and meets the needs of its students. The University has courses, majors and units which are interdisciplinary in their content. Undergraduate degree regulations are structured in a way which enables students to undertake more than one major, thus enabling students to formally choose an interdisciplinary undergraduate education. A broad measure of the success of the interdisciplinarity is the increasing proportion of students choosing to undertake more than one major. The specific desired outcome is to achieve a minimum of 20 per cent of students undertaking two majors from different fields of education.

iii) Percentage of students undertaking two majors from different fields of education.

This indicator measures the proportion of students undertaking two majors with different field of education codes. It demonstrates the number of students undertaking interdisciplinary studies at the level of major relative to the total number of award students. The data are taken from the Commonwealth Student Data Collection and supplemented with second major information from the University's student records system. The higher education classification system was replaced in 2001 with the Australian Standard Classification of Education and historical records have been translated to the new classifications.

Veterinary Studies is a professional training course which excludes students from enrolling in a second course or major. Biomedical Science is now classified as a Natural and Physical Science rather than Health. Data relating to the majors within the Bachelor of Commerce are not available for analysis, thus only the students who enrolled in a second major from a field other than Management and Commerce are included in the table overleaf.

Broad Field of Education	1997	1998	1999	2000	2001
Agriculture, Environmental and Related Studies	6%	8%	8%	11%	14%
Creative Arts	18%	16%	17%	15%	15%
Education	11%	13%	12%	13%	14%
Engineering and Related Technologies	13%	11%	11%	10%	10%
Information Technology	20%	20%	17%	14%	14%
Management and Commerce	8%	6%	6%	6%	6%
Natural and Physical Sciences	12%	12%	14%	16%	14%
Society and Culture	19%	20%	20%	20%	19%
Health	0%	0%	0%	0%	0%
Total	14%	14%	13%	14%	13%

Quality of Graduates

The University's objective to produce graduates who are valued for their academic qualities, employment related skills and commitment to lifelong learning is well demonstrated by their ability to gain employment or be accepted into further study. The University's desired outcome is to produce graduates who demonstrate their commitment to lifelong learning by undertaking further study or gaining employment.

iv) Employment and Study Destination Survey

The University participates in the annual national Graduate Destination Survey conducted by the Graduate Careers Council of Australia (GCCA). The survey is administered to all graduates after the completion of their course. The University does not adjust or supplement the survey results with internal information from the student records system.

The survey asks students about their employment and study status as at 30 April the year succeeding their course completion. Mid year graduates have the census date of 30 October.

This measures the successful outcomes in terms of a graduate being employed and/or studying. Graduates may be both working and studying. The percentage of graduates in their work mode of choice are those who are either employed full or part time and not seeking the alternate mode compared with graduates who want or have paid work at the time of the survey.

	1996 Graduates	1997 Graduates	1998 Graduates	1999 Graduates	2000 Graduates
Full Time Employment	55.0%	49.4%	56.1%	54.0%	58.1%
Part Time Employment	25.5%	27.3%	25.6%	23.3%	22.1%
Unavailable for Employment	9.1%	12.2%	8.0%	8.9%	8.6%
Unemployed	10.4%	11.2%	10.3%	11.8%	11.1%
Total % in Employment	80.5%	76.6%	81.7%	77.3%	80.2%
% Graduates in their work mode of choice	74.3%	73.9%	75.4%	75.8%	77.6%

	1996 Graduates	1997 Graduates	1998 Graduates	1999 Graduates	2000 Graduates
Full Time Study	15.6%	22.6%	19.1%	16.4%	16.8%
Part Time Study	7.9%	10.3%	11.3%	8.4%	10.8%
Not Studying	76.4%	67.2%	69.7%	75.1%	72.4%
Total % Studying	23.5%	32.8%	30.4%	24.8%	27.6%
Number of Respondents	876	1,019	1,284	1,284	1,322
Number Surveyed	1,711	1,840	1,989	2,215	2,390
Response rate	51%	55%	65%	58%	56%

Quality of Teaching

The University's objective to provide an environment in which teaching is valued as a professional commitment of academic staff is demonstrated by the students' perceptions of the quality of the teaching. This is measured by the students' responses to the Course Experience Questionnaire and the student's evaluation of units routinely conducted by the University. The University desired outcomes are to maintain student satisfaction with the quality of teaching, as measured by the Course Evaluation Questionnaire, above the national mean and to maintain student satisfaction, as measured by the unit surveys, of above 80 per cent.

v) Perceived Quality of Teaching - Course Experience Questionnaire

The University participates in the annual national Course Evaluation Questionnaire conducted by the Graduate Careers Council of Australia (GCCA). The survey is administered to all graduates six months after the completion of their course with the year noted being the year the results were published.

The survey asks graduates to rate their perceptions to twenty-five questions which cover five broad aspects of their recently completed course. These aspects are: the quality of teaching, the clarity of goals and standards, the appropriateness of assessment, the level of workload, and the enhancement of their generic skills. Students are also asked to rate their overall level of satisfaction with the course. The scale is a five-point scale, with 5 being strongly agree and 1 being strongly disagree. Students who record scores of 3, 4 and 5 are defined as broadly agreeing with the statements. Data for all students are given for the most recent three years.

CEQ Scale	1998		1999		2000	
	Percent Broadly Agree		Percent Broadly Agree		Percent Broadly Agree	
	Murdoch	National	Murdoch	National	Murdoch	National
Good Teaching	84.0	78.4	84.7	78.5	84.8	78.4
Clear Goals & Standards	84.8	82.1	86.1	82.1	87.0	82.2
Appropriate Assessment	87.2	86.4	88.9	86.4	88.8	85.9
Appropriate Workload	71.2	73.0	73.5	73.3	76.2	73.5
Generic Skills	89.0	86.4	87.3	86.4	88.3	86.5
Overall Satisfaction	91.2	89.2	92.1	89.5	93.0	89.4
Number of Respondents	1,284	90,117	1,377	83,169	1,347	81,643
Estimated response rate	65%	59%	58%	58%	56%	58%

vi) Student Evaluation of Teaching

The University conducted student evaluation surveys on each unit each time it was run until Semester Two 2001, provided there were more than ten enrolled students. From Semester 2 2001 the surveys are conducted on 50 per cent of the units offered each semester, with the policy regarding the minimum number of students remaining the same. The survey asks students to rate their perception to a series of statements which cover the three aspects of the unit of study; quality of teaching, availability of resources to support teaching and value of units. Students are also asked to rate their perception of overall satisfaction with the quality of the unit. The sampling error rate is less than 1 per cent.

This indicator is based on the students' response to the statement: "Overall I was satisfied with the quality of the unit" and is expressed as a percentage of the responses. The University continues to achieve its target for the quality of teaching.

	1997	1998	1999	2000	2001
Agreed or Strongly Agreed	80%	83%	84%	86%	85%
Response rate	54%	55%	58%	60%	62%

Efficiency Indicators

The University presents data and two indicators which demonstrate the efficiency with which Murdoch is achieving its teaching and learning outputs. The ratios of total operating and teaching related expenditure to total load (EFTSU), successful load to teaching staff and the percent successful load of total load provide information regarding the resources required to produce successful outputs.

vii) Ratios of total operating and teaching related expenditure to total load (EFTSU)

This new indicator includes teaching and research training load and the expenditure associated with that load. It replaces the indicator which focused on coursework teaching and associated expenditure. Comparable figures are provided for five years. An EFTSU is an effective full-time student unit. This unit of measure allows for the fact that not all students are studying full-time at the University. Total expenditure includes general research expenditure and has been included because of the important role research plays in informing teaching. Teaching expenditure relates to the provision of teaching and related services to all students and has been identified as total University expenditure less research grants expenditure. Total load is a sum of all units being undertaken by students.

The average expenditure per EFTSU is dependent on and will vary according to the discipline mix taught by the university. Clinical sciences and laboratory based sciences are more expensive to teach than classroom based disciplines.

The data for this indicator are extracted from the Commonwealth Student Collections and the University's Financial Records. The comparative expenditure figures have been indexed to 2001 prices.

	1997	1998	1999	2000	2001
Total Load (EFTSU)	7,675	8,073	8,606	8,977	9061
Total Operating Expenditure (\$000)	117,755	126,707	130,837	134,652	151,862
Teaching Related Expenditure (\$000)	103,369	110,316	113,303	117,353	133,572
Total Expenditure /Total Load	\$15,343	\$15,695	\$15,203	\$15,000	\$16,760
Teaching Related Expenditure / Total Load	\$13,468	\$13,665	\$13,166	\$13,073	\$14,741

viii) Ratios of EFTSU per teaching staff FTE, successful EFTSU per teaching staff FTE, and the percentage successful load of total load.

A Staff FTE is an equivalent full-time staff. EFTSU is an effective full-time student unit. These units of measure allow for the fact that not all staff and students are full-time at the University. Academic Staff may be classified as 'Teaching Only', 'Teaching and Research', 'Research Only' or 'Other'. The Commonwealth defines these measures and classifications for the universities. Only academic staff associated with Academic Organisational Units and designated as 'Teaching Only' or 'Teaching and Research' have been included in this indicator. Successful load is the sum of all load with a passing result. Total load is a sum of load being undertaken by coursework students. The research load has been excluded from this calculation.

The data for this indicator are extracted from the Commonwealth Student and Staff Data Collections. The load figures are as at 31 August.

	1997	1998	1999	2000	2001
Total Non-Research Load (EFTSU)	7,200	7,599	8,128	8,473	8,559
Successful Load (EFTSU)	6,112	6,443	6,978	7,222	7,361
Teaching Staff (FTE)	440	442	417	442	459
Total Load / Teaching Staff	16.3	17.2	19.5	19.2	18.6
Successful Load / Teaching Staff	13.9	14.6	16.7	16.3	16.0
Percent Successful Load of Total Load	85%	85%	86%	85%	86%

Excellence in Research

Goal:

Research will be conducted to the highest international standards and will address contemporary problems and issues of significance to the community.

Objectives:

- To maintain a productive research culture with particular areas of national and international strength
- To increase Murdoch's external funding base for research
- To increase the number of talented postgraduate research students and to provide high quality research training and supervision

Desired Outcomes:

- To maintain a productive research culture as measured by the Research Funding allocation and rank
- To increase research income per ten research staff FTE
- To increase the number of postgraduate research student completions per ten Staff FTE

Effectiveness Indicators

The University presents three performance indicators to demonstrate how well it is working to achieve its research objectives. The objective to maintain a productive research culture with particular areas of national and international strength is supported by the desired outcome to maintain a productive research culture as measured by the Research Funding allocation and rank. This indicator demonstrates the University's national standing in terms of research productivity. Research income is an indicator of a productive research culture and the ability of the University to increase its external funding base for research. The desired outcome is to increase its research income per ten research staff FTE which is a measure of results over time. The objective to increase the number of talented postgraduate research students and to provide high quality research training and supervision is supported by the desired outcome to increase the number of postgraduate research students completing within time. The actual number of research students are provided in the summary statistics section of the Annual Report.

ix) Research Funding: A National Comparison

Research Funding is a combination of the Research Training Scheme (RTS) and Institutional Grants Scheme (IGS) funds provided by the Commonwealth. It is a key indicator of research performance because this funding is allocated according to the comparative research performance of all Commonwealth funded universities. Each funding scheme has its own composite index of research outputs and inputs. The components and combined indices are higher degrees by research completions (33 per cent) and student load (10 per cent), research income (47 per cent), and publications (10 per cent). The figures are published in the DEST annual Higher Education triennial reports. These are weighted and averaged, except for student load, over the two most recent years for which data are available. Student load is the figure for the most recent year.

The Research Funding Indicator is tabulated and all publicly funded Australian universities ranked according to their share of the total Research Training Scheme and Institutional Grants Scheme funds. This is a new funding scheme and changes in funding are capped at 5 per cent for the first three years, however universities denoted with an (R) are receiving a "top-up" from the Regional Protection Fund. Universities denoted with an (M) have medical schools and supporting departments. These universities have had the advantage of enhanced access to National Competitive Grants schemes such as the National Health and Medical Research Council. Western Australian universities are bolded. Murdoch University does not have a medical school and ranks 11 among other Universities in that category. In the overall ranking Murdoch remains at 21.

Research Funding Allocations 2001 – 2002

	RTS + IGS \$000 Allocation 2001	RTS + IGS Percentage Allocation 2001	Rank	RTS + IGS \$000 Allocation 2002	RTS + IGS Percentage Allocation 2002	Rank
The University of Melbourne (M)	83,483	10.962	1	82,526	10.487	1
The University of Sydney (M)	80,209	10.532	2	81,157	10.314	2
The University of Queensland (M)	73,168	9.608	3	77,039	9.790	3
The University of New South Wales (M)	62,887	8.258	4	65,665	8.345	4
Monash University (M)	57,307	7.525	5	55,825	7.094	5
The University of Western Australia (M)	41,907	5.503	6	43,337	5.507	6
The University of Adelaide (M)	38,735	5.086	7	40,505	5.147	7
The Australian National University	27,551	3.618	8	37,322	4.743	8
University of Tasmania (M)	19,095	2.507	11	20,310	2.581	9
La Trobe University (R)	19,706	2.588	10	19,753	2.510	10
The University of Newcastle (R) (M)	20,162	2.647	9	19,581	2.488	11
Macquarie University	18,214	2.392	12	18,557	2.358	12
University of Wollongong	17,199	2.260	14	17,964	2.283	13
The Flinders University of South Australia	17,389	2.280	13	17,592	2.236	14
Griffith University	16,787	2.204	15	17,582	2.234	15
Royal Melbourne Institute of Technology	16,258	2.135	16	16,429	2.088	16
Curtin University of Technology	13,673	1.795	19	14,670	1.864	17
Queensland University of Technology	14,536	1.909	17	14,408	1.831	18
University of Technology, Sydney	13,777	1.809	18	13,513	1.717	19
The University of New England	11,893	1.562	22	12,404	1.576	20
Murdoch University	11,986	1.574	21	12,379	1.573	21
James Cook University (R) (M)	12,151	1.596	20	12,077	1.535	22
University of South Australia	11,478	1.507	23	11,416	1.451	23
University of Western Sydney	10,686	1.403	24	11,314	1.438	24
Deakin University	9,095	1.194	25	9,686	1.231	25
Swinburne University of Technology	6,733	0.884	26	6,603	0.839	26
Victoria University of Technology	6,047	0.794	27	6,278	0.798	27
Edith Cowan University	4,410	0.579	28	4,732	0.601	28
University of Canberra	3,992	0.524	29	4,283	0.544	29
Charles Sturt University (R)	3,976	0.522	30	4,206	0.535	30
Central Queensland University	3,588	0.471	32	3,720	0.473	31
Southern Cross University (R)	3,749	0.492	31	3,637	0.462	32
Northern Territory University	3,307	0.434	33	3,478	0.442	33
University of Southern Queensland	2,681	0.352	34	2,781	0.353	34
University of Ballarat	1,354	0.178	35	1,439	0.183	35
Australian Catholic University	1,296	0.170	36	1,372	0.174	36
Australian Maritime College	589	0.077	37	431	0.055	37
University of the Sunshine Coast	303	0.040	38	425	0.054	38
Melbourne College of Divinity *				219	0.028	39
The University of Notre Dame	147	0.019	39	192	0.024	40
Bond University	56	0.007	40	80	0.010	41
Batchelor Institute of Indigenous Tertiary Education *				9	0.001	42
Total	761,558	100		786,897	100	

Research Training Scheme (RTS)
Institutional Grants Scheme (IGS)

* Data not available for 2001

Research Income

x) Research Income per 10 Research Staff FTE

A Staff FTE is an equivalent full-time academic staff member. This unit of measure allows for the fact that not all staff are working full-time at the University. Academic Staff may be classified as 'Teaching Only', 'Teaching and Research', 'Research Only' or 'Other'. The Commonwealth defines these measures and classifications for the universities. Only academic staff associated with Academic Organisational Units and designated as 'Research Only' or 'Teaching and Research' have been included in this indicator. These staff have been included because they are employed to undertake research. A rolling three year staff average has been used.

The data for this indicator are extracted from the Commonwealth Staff Data Collections, the Commonwealth funding statements and the University's Financial Records. The University's external research income has increased over the last five years.

	1997	1998	1999	2000	2001
Research Income (\$000's)	13,038	15,550	15,043	19,615	19,863
Research Staff (FTE)	301	312	322	329	339
Research Income per 10 Staff FTE	\$433,443	\$498,864	\$467,765	\$596,215	\$585,937

Higher Degree by Research Completions

xi) Higher Degree by Research Completions per 10 Research Staff FTE

The University has a desired outcome to increase the number of Higher Degrees by Research completions per 10 full-time equivalent (FTE) research staff. The Commonwealth defines research staff FTE for all universities. Only academic staff associated with Academic Organisational Units and classified as 'Research and Teaching' or 'Research Only', Lecturer B and above have been included in the calculation. All academic staff classified as 'Other' or 'Teaching Only', 'Research and Teaching' or 'Research Only' who are below Lecturer B have been excluded. These have been excluded because these staff are not employed to supervise postgraduate research students. A rolling three year staff average has been used.

The data for this indicator are extracted from the Commonwealth Student and Staff Data Collections. Due to the unresolved status of research students results at the time the Annual Report is prepared this indicator will be one year in arrears.

Degree Type	1996	1997	1998	1999	2000
Research Staff (FTE)	291	301	312	322	329
Master's by Research Completions	11	9	14	3	6
Doctorate by Research Completions	63	54	64	66	58
Master's Completions per 10 Staff	0.4	0.3	0.4	0.1	0.2
Doctorate Completions per 10 Staff	2.2	1.8	2.1	2.0	1.8
Total Completions per 10 Staff	2.6	2.1	2.5	2.1	1.9

Efficiency Indicators

The data and indicators below demonstrate the efficiency with which the University is achieving its research outputs.

Research Publications

xii) Number of publications per 10 Research Staff FTE

This indicator demonstrates the number of publications per ten full-time equivalent (FTE) research staff by publication type. The Commonwealth defines research staff FTE for all universities. The staff figures include academic staff associated with Academic Organisational Units who are classified as 'Research' or 'Teaching and Research Only' for the reasons stated above. Those academic staff classified as 'Teaching Only' or 'Other' have been excluded.

The data for this indicator are extracted from the Commonwealth Research Publications and Staff Data Collections which is completed on June 30 each year. The actual number of publications are adjusted to remove the contribution of non Murdoch staff eg if a publication is co-authored by two people, one of which is not a Murdoch staff, the value is reported as 0.5. The timing of the collection completion makes it necessary to report the results in the subsequent year's annual report.

Publication Category	1996	1997	1998	1999	2000
Research Staff FTE	291	301	312	322	329
Books & Monographs	10.2	13.5	12.8	7.8	11.8
Refereed Journal Articles & Book Chapters	277.0	271.52	314.3	278.0	348.3
Published Conference Papers & Other	514.1	451.89	488.8	449.0	405.9
Books & Monographs per 10 Staff	0.4	0.5	0.4	0.2	0.4
Refereed Journal Articles & Book Chapters per 10 Staff	9.0	10.1	11.3	8.6	10.6
Published Conference Papers & Other per 10 Staff	17.7	15.0	15.7	13.9	12.3
Total per 10 Staff	27.5	24.5	26.2	22.8	23.3

Student progress and completion

xiii) Time to completion of Higher Degree by Research Students

This indicator measures the average time taken for Higher Degree by Research students to complete their study requirements. Students admitted to Higher Degrees are deemed to have the ability to complete at the point of selection, therefore this indicator demonstrates the efficiency of the student under the supervision of the University's staff. There are two definitions of time. For students enrolled prior to 2001 time is defined by the Commonwealth for Master of Philosophy students as three years and for Doctor of Philosophy as five years, and for those enrolled in 2001 and onwards it will be defined as two years and five years respectively. The time taken is allocated to the year in which the students completed.

The data for this indicator are extracted from the Commonwealth Student Data Collections and supplemented by the University's student records. The figures for 2001 are preliminary due to the unresolved student completion details. The final figures for 2001 will be reported in the 2002 Annual Report, but are not expected to differ significantly to the preliminary figures shown here.

The time to completion is affected by the number of students studying on a part-time basis and the number of part-time students who completed in the period.

Degree Type	1997	1998	1999	2000	2001
Master's by Research	3 yrs 1 mths	2 yrs 7 mths	4 yrs 4 mths	3 yrs 1 mth	2 yrs 4 mths
Doctorate by Research	4 yrs 9 mths	4 yrs 1 mth	4 yrs 0 mths	4 yrs 0 mths	4 yrs 0 mths

CERTIFICATION OF PERFORMANCE INDICATORS

We hereby certify that the 2001 key performance indicators are based on proper records and fairly represent the performance of Murdoch University for the year ending 31 December 2001.



F M Chaney
Chancellor



M E Nairn
Vice Chancellor

8 April 2002

MURDOCH UNIVERSITY

CERTIFICATE OF COMPLIANCE

We hereby certify that during the period 1 January 2001 to 31 December 2001 Murdoch University has operated within the provisions of the Murdoch University Act 1973 - 1985 and has also complied with the Financial Administration and Audit Act (1985) and all other relevant written laws.



F M Chaney
Chancellor



M E Nairn
Vice Chancellor

8 April 2002

STATEMENT OF EXPENDITURE

Section 175 ZE of the Electoral Act 1907 requires the University to include a statement in the Annual Report setting out details of expenditure incurred by the University and certain classes of organisations.

The expenditure incurred by the University during the 2001 financial year was as follows:

The total amount of the expenditure was \$662,438.

The classes of organisation, the names of the organisations within the class and the total expenditure for the class was as follows:

Agencies and organizations are not named where the expenditure was less than \$2,000 for the year, but the expenditure has been included in the total figure.

(a)	Advertising Agencies	\$ 8,745
------------	-----------------------------	-----------------

Wildmoon Marketing and Strategic Communication

(b)	Direct Mail Organisations	\$ 68,148
------------	----------------------------------	------------------

Lasermail Pty Ltd

(c)	Media Advertising Organisations	\$ 585,545
------------	--	-------------------

Community Newspapers

Media Decisions WA

Nexus Asatsu Advertising Pty Ltd

Price Advertising

West Australian



**MURDOCH UNIVERSITY
FINANCIAL STATEMENTS
FOR THE YEAR ENDED
31 DECEMBER 2001**

CERTIFICATION OF FINANCIAL STATEMENTS

The accompanying financial statements of Murdoch University and the accompanying consolidated financial statements have been prepared in compliance with the provisions of the Financial Administration and Audit Act 1985 from proper accounts and records to present fairly the financial transactions for the year ending 31 December 2001 and the financial position as at 31 December 2001.

At the date of signing we are not aware of any circumstance that would render the particulars included in the financial statements misleading or inaccurate.

At the date of signing there are reasonable grounds to believe that the institution will be able to pay its debts as and when they fall due.



F M Chaney
Chancellor



M E Nairn
Vice Chancellor



G McMath
Principal Accounting Officer

8 April 2002



AUDITOR GENERAL

To the Parliament of Western Australia

MURDOCH UNIVERSITY FINANCIAL STATEMENTS FOR THE YEAR ENDED DECEMBER 31, 2001

Scope

I have audited the accounts and financial statements of Murdoch University for the year ended December 31, 2001 under the provisions of the Financial Administration and Audit Act 1985. The financial statements include the consolidated accounts of the consolidated entity comprising the University and the entities it controlled at the year's end or from time to time during the financial year.

The University Senate is responsible for keeping proper accounts and maintaining adequate systems of internal control, preparing and presenting the financial statements, and complying with the Act and other relevant written law. The primary responsibility for the detection, investigation and prevention of irregularities rests with the University Senate.

My audit was performed in accordance with section 79 of the Act to form an opinion based on a reasonable level of assurance. The audit procedures included examining, on a test basis, the controls exercised by the University to ensure financial regularity in accordance with legislative provisions, evidence to provide reasonable assurance that the amounts and other disclosures in the financial statements are free of material misstatement and the evaluation of accounting policies and significant accounting estimates. These procedures have been undertaken to form an opinion as to whether, in all material respects, the financial statements are presented fairly in accordance with Accounting Standards, other mandatory professional reporting requirements and the Treasurer's Instructions so as to present a view which is consistent with my understanding of the University's and the consolidated entity's financial position, the results of their operations and their cash flows.

The audit opinion expressed below has been formed on the above basis.

Qualification

Manual and computerised controls associated with a new student management system, implemented in January 2001, were not adequate to provide reasonable assurance that student debtor transactions were completely and accurately processed. This, together with the lack of adequate reconciliations between the student management system and the general ledger, resulted in a large number of errors in the accounting records, and difficulties in determining outstanding student debtors in a timely manner.

Subsequent to year end, a reconciliation has been completed and the errors corrected. The University is currently implementing revised procedures.

Murdoch University
Financial statements for the year ended December 31, 2001

Qualified Audit Opinion

In my opinion,

- (i) except for the effects of the matters referred to in the qualification, the controls exercised by Murdoch University provide reasonable assurance that the receipt, expenditure and investment of moneys and the acquisition and disposal of property and the incurring of liabilities have been in accordance with legislative provisions; and
- (ii) the Statement of Financial Performance, Statement of Financial Position and Statement of Cash Flows of the University and the Consolidated Statement of Financial Performance, Consolidated Statement of Financial Position, and Consolidated Statement of Cash Flows of the consolidated entity and the Notes to and forming part of the financial statements are based on proper accounts and present fairly in accordance with applicable Accounting Standards, other mandatory professional reporting requirements and the Treasurer's Instructions, the financial position of the University and the consolidated entity at December 31, 2001 and the results of their operations and their cash flows for the year then ended.



D D R PEARSON
AUDITOR GENERAL
May 2, 2002

Murdoch University Statement of Financial Position As at 31 December 2001

	Note	Consolidated		General University	
		2001	2000	2001	2000
		\$ '000	\$ '000	\$ '000	\$ '000
Current Assets					
Cash assets	24	2,239	4,093	-	-
Receivables	17	6,146	6,088	6,066	6,048
Restricted investments	25	8,115	6,740	8,115	6,740
Unrestricted investments	26	12,317	7,741	12,317	7,741
Inventories	18	780	916	780	916
Advances and prepayments		1,851	1,287	1,847	1,282
Total Current Assets		31,448	26,865	29,125	22,727
Non-Current Assets					
Property, plant and equipment	2	310,525	274,177	310,504	274,166
Loans	19	1,197	1,412	1,376	1,591
Total Non-Current Assets		311,722	275,589	311,880	275,757
Total Assets		343,170	302,454	341,005	298,484
Current Liabilities					
Bank Overdraft	24	-	-	257	1,405
Payables		2,851	2,879	2,818	2,864
Interest bearing liabilities	20	172	3,456	172	3,456
Accrued liabilities		447	242	447	242
Grants and fees in advance	21	9,796	8,265	9,518	8,076
Provisions	22	7,014	5,593	7,009	5,593
Total Current Liabilities		20,280	20,435	20,221	21,636
Non-Current Liabilities					
Interest bearing liabilities	23	8,387	7,469	8,387	7,469
Provisions	22	3,518	3,409	3,518	3,409
Total Non-Current Liabilities		11,905	10,878	11,905	10,878
Total Liabilities		32,185	31,313	32,126	32,514
NET ASSETS		310,985	271,141	308,879	265,970
Equity					
Reserves	28	156,584	114,155	156,584	114,155
Retained profits	29	154,401	156,986	152,295	151,815
TOTAL EQUITY		310,985	271,141	308,879	265,970

This Statement of Financial Position should be read in conjunction with the accompanying notes.

Murdoch University Statement of Financial Performance For the Year ended 31 December 2001

	Note	Consolidated		General University	
		2001	2000	2001	2000
		\$ '000	\$ '000	\$ '000	\$ '000
REVENUE					
Revenues from ordinary activities					
Commonwealth Government financial assistance	3	61,292	53,443	61,292	53,443
Higher Education Contribution Scheme	4	26,697	22,953	26,697	22,953
Other research grants and contracts	5	17,782	18,173	17,564	17,767
Donations and bequests	46	512	597	12,512	597
Investment income	6	847	1,045	711	1,004
Fees and charges	8	36,989	28,138	28,098	23,239
Trading income	7	2,335	2,046	2,335	2,046
Other	9	3,560	3,139	3,341	3,135
Total revenues from ordinary activities		150,014	129,534	152,550	124,184
EXPENSES					
Expenses from ordinary activities					
Academic activities	10	87,819	76,761	87,415	76,582
Libraries	11	8,221	6,869	8,221	6,869
Other academic support services	12	5,348	4,671	5,348	4,671
Student services	13	10,722	6,618	10,722	6,618
Public services	14	9,823	6,185	9,698	6,138
Buildings and grounds	15	9,157	8,515	9,157	8,515
Administration & other general institutional services	16	21,301	21,182	21,301	21,182
Total expenses from ordinary activities	31	152,391	130,801	151,862	130,575
Profit (loss) from ordinary activities		(2,377)	(1,267)	688	(6,391)
Net increase in asset revaluation reserve		42,221	-	42,221	-
Total revenue, expenses and adjustments recognised directly in equity		42,221	-	42,221	-
Total Changes in Equity		39,844	(1,267)	42,909	(6,391)

The Statement of Financial Performance should be read in conjunction with the accompanying notes.

Murdoch University Statement of Cash Flows For the Year ended 31 December 2001

	Note	Consolidated		General University	
		2001 \$ '000	2000 \$ '000	2001 \$ '000	2000 \$ '000
Cash Flows from Operating Activities					
Inflows:					
Commonwealth Government financial assistance		59,740	57,975	59,740	57,975
Higher Education Contribution Scheme					
Student payments		3,419	3,352	3,419	3,352
Higher Education Trust Fund		25,148	21,353	25,148	21,353
Fees and charges		28,319	22,813	28,318	22,813
Donations and bequests		542	567	12,542	567
Other research grants and contracts		18,991	16,746	18,835	16,370
Interest		1,039	909	903	868
Trading		2,545	2,280	2,545	2,280
Other		3,793	3,039	3,574	3,035
Outflows:					
Staff costs		(87,593)	(82,730)	(87,430)	(82,651)
Suppliers		(33,407)	(27,842)	(33,069)	(27,584)
Other		(8,316)	(6,538)	(8,273)	(6,530)
Net cash provided by operating activities	32	14,220	11,924	26,252	11,848
Cash Flows from Investing Activities					
Inflows:					
Proceeds from sale of property, plant and equipment		336	259	335	259
Proceeds from sales Murdoch Retirement Village		9,168	5,200	-	-
Outflows:					
Acquisition of property, plant and equipment		(8,597)	(5,664)	(8,582)	(5,664)
Building costs Murdoch Retirement Village units		(5,458)	(10,135)	(5,334)	(10,135)
Acquisition of artworks		(8)	(9)	(8)	(9)
Acquisition of library books		(3,413)	(2,921)	(3,413)	(2,921)
Net cash (used in) investing activities		(7,972)	(13,270)	(17,002)	(18,470)
Cash Flows from Financing Activities					
Inflows:					
Proceeds of borrowings from WATC		-	6,000	-	6,000
Repayment of loans		215	7	215	7
Outflows:					
Repayment of borrowings to WATC		(2,366)	(1,371)	(2,366)	(1,371)
Net cash provided by (used in) financing activities		(2,151)	4,636	(2,151)	4,636
Net increase (decrease) in cash held		4,097	3,290	7,099	(1,986)
Balance of Cash 1 January		18,574	15,284	13,076	15,062
Balance of Cash 31 December	33	22,671	18,574	20,175	13,076

The Statement of Cash Flows should be read in conjunction with the accompanying notes.

NOTES TO THE FINANCIAL REPORTS

1. Statement of Accounting Policies
2. Property, Plant and Equipment
3. Commonwealth Government Financial Assistance – Revenue
4. Higher Education Contribution Scheme - Revenue
5. Other Research Grants and Contracts – Revenue
6. Investment Income – Revenue
7. Trading Income – Revenue
8. Fees and Charges – Revenue
9. Other Income – Revenue
10. Academic Activities – Expenses
11. Libraries – Expenses
12. Other Academic Support Services - Expenses
13. Student Services – Expenses
14. Public Services – Expenses
15. Buildings and Grounds – Expenses
16. Administration and Other General Services – Expenses
17. Receivables
18. Inventories
19. Non Current Assets – Loans
20. Current Liabilities – Interest Bearing Liabilities
21. Grants and Fees in Advance
22. Provisions
23. Non Current Liabilities – Interest Bearing Liabilities
24. Cash Assets / (Bank Overdraft)
25. Restricted Investments
26. Unrestricted Investments
27. Capital Commitments
28. Reserves
29. Retained Profits
30. Joint Interest in Retention Funds Deposit Accounts
31. Total Operating Expenses by Objective Classification
32. Reconciliation of Net Cash from Operating Activities
33. Reconciliation of Cash
34. Losses
35. Write Offs
36. Remuneration of Auditor
37. Non Current Investments
38. Remuneration of Senior Officers
39. Remuneration of Senate Members
40. Superannuation Fund Contributions
41. Explanatory Statement – Actual and Budget Variances
42. Financial Instruments
43. Segment Information
44. Contingent Liabilities
45. Events Subsequent to Reporting Date
46. Subsidiary Bodies
47. Operating Leases
48. Associated Entities
49. Acquittal of Commonwealth Government Grants

NOTES TO AND FORMING PART OF THE FINANCIAL STATEMENTS

31 December 2001

1. Statement of Accounting Policies

The following accounting policies have been adopted in the preparation of the Murdoch University financial statements. Unless otherwise stated these policies are consistent with those adopted in the preceding year.

(a) General System of Accounting

The financial statements are prepared in accordance with the provision of the Financial Administration and Audit Act 1985. Additional disclosures have been included in accordance with instructions issued by the Department of Education, Training and Youth Affairs (DETYA), for the preparation of annual financial reports by Australian Higher Education Institutions.

These financial statements constitute a general purpose financial report that is prepared in accordance with Australian Accounting Standards and the Urgent Issues Group (UIG) Consensus Views, as applied by the Treasurer's Instructions. Several of these are modified by the Treasurer's Instructions to vary application, disclosure, format and wording.

The Financial Administration and Audit Act 1985 (WA) and the Treasurer's Instructions are legislative provisions governing the preparation of financial statements and take precedence over the Australian Accounting Standards and the UIG Consensus Views. Modifications to the Australian Accounting Standards and UIG Consensus views are meant to meet the requirements of their general application to the public sector, together with need for greater disclosure and accountability. If any modification has a material or significant effect on the reported results, details of that modification and where practicable, the resulting financial effect, are disclosed in individual notes to these financial statements.

The accounts have been drawn up on the basis of historical cost principles subject to the exceptions noted in the paragraphs below.

The accrual basis of accounting has been applied.

(b) Principles of Consolidation

The column headed "General University" discloses the results of the University operations. The column headed "Consolidated" incorporates the results of controlled entities of the University.

The University Company Pty Ltd and Murdoch Retirement Services Ltd are the only controlled entities of the University that had any transactions during the year.

(c) Valuation of Non-Current Assets

The University obtained independent valuations during the financial year as follows:

- Land and Buildings - Valuer General's Office
- Artworks - Perth Galleries and Wendy Rogers

The current University policy for valuing land, buildings and artworks is every five years. This policy will be reviewed in the next financial year.

Fair value has been determined on the basis of current use land value for the Murdoch University campus and market land value for all other land.

Buildings were valued at estimated current replacement costs less accumulated depreciation.

Other fixed assets are presented at historical cost less depreciation where appropriate.

Equipment was capitalised for items costing more than \$1,000 and having a useful life of more than two years up to the year ended 31 December 2000. This threshold was increased to \$5,000 from 1 January 2001. Equipment purchased prior to the current year and costing less than \$5,000 has been retained on the asset register and depreciation applied.

The valuation for library books is based on acquisition for three years to the end of the current financial year. The University has adopted a "rolling depreciation" methodology for library books, whereby acquisitions in the fourth year preceding the reporting year are charged to depreciation.

(d) Valuation of Investments

Investments are stated at historical cost.

The market value of listed shares held by the University at balance date is:

1998	\$10,353
1999	\$9,334
2000	\$10,071
2001	\$10,071

The University holds shares in companies acquired or received in exchange for the University's support of specific operations. The values of these shares are not recorded in the financial statements as the amount is insignificant and the determination of the market value is not reliable.

(e) Depreciation of Non-Current Assets

All non-current assets having a limited useful life are systematically depreciated over their useful lives in a manner that reflects the consumption of their future economic benefits.

The depreciation of computer and other equipment was calculated on the straight-line method for the current financial year and on the reducing balance basis in previous years. The depreciation rates for the current and previous financial years are:

Computer Equipment – 25%
Other Equipment – 12.5%

For buildings, the average remaining life has been assessed as 50 years.

Depreciation is not calculated on motor vehicles as the University purchases motor vehicles exempt from GST and the proceeds of disposals approximate the purchase price.

Works of art are considered as heritage assets and are anticipated to have very long and indeterminate useful lives. Their service potential has not, in any material sense, been consumed during the reporting period. As such, no amount for depreciation has been recognised in respect of works of art.

The basis for depreciation and the depreciation rates are reviewed annually.

Profits and losses, from the disposal of fixed assets, have been taken into account in determining the profit on operating activities for the financial year.

(f) Inventories

Inventories are valued at the lower of cost or net realisable value with provisions being made for obsolescence where considered necessary.

(g) General University

Relates to the income and expenditure relevant to the general operating activities of the University. Income is derived principally from Commonwealth Government financial assistance, research grants, interest earned from the investment of funds and overseas full fee-paying students.

(h) Employee Entitlements – Provision for Annual and Long Service Leave

Provision is made for the University liability for employee entitlements arising from services rendered by employees to balance date. Employee entitlements expected to be settled within one year together with salary and wage entitlements along with annual leave that will be settled within one year are measured at their nominal amount. Other employee entitlements payable later than one year are measured at the present value of future cash flows on a basis consistent with Australian Accounting Standard AAS 30.

(i) Employee Entitlements – Superannuation

The following superannuation schemes are operative for University employees with contributions based on a percentage of earnings.

- Unisuper Award Advanced - Superannuation Scheme for Australian Universities
University contribution 14% and employee contribution 7%
University contribution 7% and employee contribution 3.5%
- Unisuper Award Plus - Superannuation Scheme for Australian Universities
University contribution 8% and employee contribution 0%

The University also contributes 3% of earnings for Unisuper Award Advanced to Unisuper Award Plus as part of the industrial award.

(j) Insurance

Insurance cover is effective for all usual commercial risks.

(k) Special Reserves

Special Reserves are created for funds that are retained for expenditure on specified items in future years.

(l) Leased Assets

The University has no assets subject to finance leases.

The University has entered into a number of operating lease arrangements for equipment and motor vehicles. Lessors effectively retain all risks and benefits incidental to ownership of the items held under the operating lease. Equal installments of the lease payments are charged to the operating statement over the lease term, as this is representative of the pattern of benefits to be derived from the lease property.

Details of operating leases are shown in note 47 to the financial statements.

(m) Current Assets

Trade debtors are initially recorded at the amount of contracted sales proceeds. A provision for doubtful debts is recognised to the extent that recovery of outstanding debts is less than likely.

Bank deposits are carried at cost.

(n) Current Liabilities

Creditors are recognised as amounts to be paid in the future for goods and services received, whether or not billed before balance date.

(o) Associated Entities

Murdoch University has a 45 per cent ownership interest in Murdoch College Properties Pty Ltd, a company whose principal activity is to provide the infrastructure on the University's campus for the secondary school operations of Murdoch College (Inc).

Murdoch College International, a company 100 per cent owned by the Alexander Education Group, holds the remaining 55 per cent ownership interest.

Murdoch University has leased land, on a peppercorn rental basis of \$1 per annum, to Murdoch College Properties Pty Ltd, with a lease term of 50 years. Title to the buildings will revert to Murdoch University upon expiry of the lease.

Details of the associated entity are shown in note 48 to the financial statements.

(p) Comparative Figures

Comparative figures are, where appropriate, reclassified so as to be comparable with the figures presented in the current financial year.

Notes to and Forming part of the Financial Statements 31 December 2001

	Consolidated		General University	
	2001 \$ '000	2000 \$ '000	2001 \$ '000	2000 \$ '000
2. Property, Plant and Equipment				
Land at valuation	103,305	67,760	103,305	67,760
Buildings at cost	4,510	50,075	4,510	50,075
Accumulated depreciation	36	2,896	36	2,896
	4,474	47,179	4,474	47,179
Buildings at valuation	172,694	131,919	172,694	131,919
Accumulated depreciation	3,454	12,674	3,454	12,674
	169,240	119,245	169,240	119,245
Work in Progress	7,745	9,544	7,745	9,544
Total Land and Buildings	284,764	243,728	284,764	243,728
Computing equipment at cost	16,865	18,396	16,861	18,391
Accumulated depreciation	12,193	10,815	12,191	10,814
Computing Equipment	4,672	7,581	4,670	7,577
Other equipment at cost	28,724	28,983	28,711	28,970
Accumulated depreciation	17,063	14,853	17,055	14,847
Other Equipment	11,661	14,130	11,656	14,123
Motor Vehicles at cost	1,548	1,319	1,534	1,319
Artworks at cost	8	31	8	31
Artworks at valuation	1,224	787	1,224	787
Artworks	1,232	818	1,232	818
Library books at cost	9,288	8,647	9,288	8,647
Accumulated depreciation	2,640	2,046	2,640	2,046
Library Books	6,648	6,601	6,648	6,601
Total Property, Plant and Equipment	310,525	274,177	310,504	274,166

These details of property, plant and equipment should be read in conjunction with notes 1 (c) and 1 (e) relating to the valuation and depreciation of non-current assets.

2. Property, Plant and Equipment (continued)

Effect of Change in Method of Depreciation.

Depreciation of equipment has been calculated using the straight line method for the current financial year. The reducing balance method was used in previous years.

See note 1 (e) to the financial statements.

The following comparison of the two depreciation methods provides an indication of the effect of this change in accounting policy on the 2001 depreciation expense.

	Consolidated \$ '000	General University \$ '000
Computing Equipment		
Straight line method as used for the current financial year	3,449	3,448
Reducing balance method as used in previous years	1,757	1,756
Difference	1,692	1,692
Other Equipment		
Straight line method as used for the current financial year	3,275	3,274
Reducing balance method as used in previous years	1,720	1,719
Difference	1,555	1,555
All Equipment		
Straight line method as used for the current financial year	6,724	6,722
Reducing balance method as used in previous years	3,477	3,475
Difference	3,247	3,247

Land	Buildings	Building works in progress	Computing equipment	Other equipment	Motor vehicles	Artworks	Library Books	Total
\$ '000	\$ '000	\$ '000	\$ '000	\$ '000	\$ '000	\$ '000	\$ '000	\$ '000

2. Property, Plant and Equipment (continued)

Reconciliations

Reconciliations of the carrying amounts of property, plant and equipment at the beginning and end of the current financial year as set out below.

Consolidated - 2001

Carrying amount at start of year	67,760	166,424	9,544	7,581	14,130	1,319	818	6,601	274,177
Adjustment starting balance	-	-	(14)	-	-	14	-	-	-
Additions	-	4,510	4,385	1,409	1,759	563	8	2,688	15,322
Disposals	-	-	(6,013)	(614)	(789)	(272)	-	-	7,688
Profit / loss on disposals	-	-	-	(255)	(164)	(76)	-	-	495
Revaluation increments	35,545	6,270	-	-	-	-	406	-	42,221
Amount expensed	-	-	(157)	-	-	-	-	-	157
Depreciation	-	(3,490)	-	(3,449)	(3,275)	-	-	(2,641)	12,855
Carrying amount at end of year	103,305	173,714	7,745	4,672	11,661	1,548	1,232	6,648	310,525

General University - 2001

Carrying amount at start of year	67,760	166,424	9,544	7,577	14,123	1,319	818	6,601	274,166
Adjustment starting balance	-	-	(14)	-	-	14	-	-	-
Additions	-	4,510	4,385	1,409	1,759	563	8	2,688	15,322
Disposals	-	-	(6,013)	(613)	(788)	(286)	-	-	7,700
Profit / loss on disposals	-	-	-	(255)	(164)	(76)	-	-	495
Revaluation increments	35,545	6,270	-	-	-	-	406	-	42,221
Amount expensed	-	-	(157)	-	-	-	-	-	157
Depreciation	-	(3,490)	-	(3,448)	(3,274)	-	-	(2,641)	12,853
Carrying amount at end of year	103,305	173,714	7,745	4,670	11,656	1,534	1,232	6,648	310,504

Notes to and Forming part of the Financial Statements 31 December 2001

	Consolidated		General University	
	2001	2000	2001	2000
	\$ '000	\$ '000	\$ '000	\$ '000

3. Commonwealth Government Financial Assistance (excluding HECS)

Grants Pursuant to the Higher Education Funding Act 1988

Operating purposes excluding HECS	55,588	48,367	55,588	48,367
ARC Large Grants Scheme	1,159	844	1,159	844
Small Grants Scheme	305	315	305	315
Research Infrastructure Grants	1,042	975	1,042	975
Australian Postgraduate Awards	1,243	1,129	1,243	1,129
ARC SPIRT - (including APA (Industry) & Collaborative)	1,153	1,052	1,153	1,052
International Postgraduate Research	268	233	268	233
International Researcher Exchange	21	19	21	19
Capital Development Pool	520	509	520	509
	61,299	53,443	61,299	53,443
Adjustments - Previous Years Grants	(7)	-	(7)	-
	61,292	53,443	61,292	53,443

4. Higher Education Contribution Scheme

Grants Pursuant to the Higher Education Funding Act 1988

Commonwealth Government payments	23,278	19,542	23,278	19,542
Student contributions	3,419	3,411	3,419	3,411
	26,697	22,953	26,697	22,953

5. Other Research Grants and Contracts

Income from other research grants and contracts was obtained by the University from the following sources during the reporting period:

Commonwealth Government grants	8,601	9,251	8,581	9,240
Western Australian Government grants	3,086	2,715	3,086	2,701
Other sources	6,095	6,207	5,897	5,826
	17,782	18,173	17,564	17,767

6. Investment Income

Investment income was earned during the year by the University from investments held:

Bank bills and deposits	847	1,045	711	1,004
-------------------------	-----	-------	-----	-------

	Consolidated		General University	
	2001	2000	2001	2000
	\$ '000	\$ '000	\$ '000	\$ '000

7. Trading Income

The trading income is from the operations of the University Bookshop and Veterinary Hospital

Sales	6,604	6,449	6,604	6,449
Less cost of goods sold				
Opening inventory	916	1,166	916	1,166
Purchases	4,133	4,153	4,133	4,153
	5,049	5,319	5,049	5,319
Closing inventory	780	916	780	916
	4,269	4,403	4,269	4,403
Gross Profit on Trading	2,335	2,046	2,335	2,046

8. Fees and Charges

Fees and charges were collected from the following sources during the reporting year:

AusAID Students' Trust	595	847	595	847
Continuing Education	29	-	29	-
Fees-approved postgraduate award students	1,800	1,313	1,800	1,313
Full fee paying overseas students	15,588	13,147	15,588	13,147
Off shore program fees	3,820	2,292	3,820	2,292
Other fees and charges	(77)	530	(78)	529
Parking	513	422	513	422
Rentals & commissions	562	566	562	566
Divisions, Research Centres and Institutes:				
Council on International Educational Exchange	349	327	349	327
Division of Academic Affairs	725	603	725	603
Division of Administration	253	141	253	141
Division of Business, Information Technology & Law	125	185	125	185
Division of Science & Engineering	1,158	546	1,158	546
Division of Social Sciences, Humanities & Education	242	222	242	222
Division of Veterinary & Biomedical Sciences	182	136	182	136
Research Centres & Institutes	232	196	232	196
Murdoch Retirement Services Ltd	8,890	4,898	-	-
Student Village	2,003	1,767	2,003	1,767
	36,989	28,138	28,098	23,239

Notes to and Forming part of the Financial Statements 31 December 2001

	Consolidated		General University	
	2001	2000	2001	2000
	\$ '000	\$ '000	\$ '000	\$ '000

9. Other Income

Other income was collected from the following sources during the reporting year:

Insurance claims	124	45	124	45
Other income	231	92	199	88
Service charges	428	334	428	334
Special Reserves	207	-	207	-
Divisions, Research Centres and Institutes:				
Division of Academic Affairs	746	967	746	967
Division of Administration	177	266	177	266
Division of Business, Information Technology & Law	59	63	59	63
Division of Science & Engineering	138	206	138	206
Division of Social Sciences, Humanities & Education	113	356	113	356
Division of Veterinary & Biomedical Sciences	591	229	591	229
Research Centres & Institutes	148	71	148	71
International Office	411	510	411	510
Murdoch Retirement Services Ltd	187	-	-	-
	3,560	3,139	3,341	3,135

10. Academic Activities

Academic staff salaries	31,658	29,225	31,598	29,223
Academic staff salary related costs	7,855	6,159	7,846	6,159
Non-academic staff salaries	16,137	15,207	16,052	15,166
Non-academic staff salary related costs	2,693	3,183	2,679	3,177
Depreciation expense - Buildings	1,810	1,748	1,810	1,748
Depreciation expense - Equipment	4,655	2,654	4,653	2,654
Other expenses	23,011	18,585	22,777	18,455
	87,819	76,761	87,415	76,582

11. Libraries

Non-academic staff salaries	2,933	2,935	2,933	2,935
Non-academic staff salary related costs	744	518	744	518
Depreciation expense - Buildings	434	420	434	420
Depreciation expense - Equipment	320	212	320	212
Depreciation expense - Library Books	2,641	2,046	2,641	2,046
Other expenses	1,149	738	1,149	738
	8,221	6,869	8,221	6,869

Notes to and Forming part of the Financial Statements 31 December 2001

	Consolidated		General University	
	2001	2000	2001	2000
	\$ '000	\$ '000	\$ '000	\$ '000
12. Other Academic Support Services				
Academic staff salaries	726	697	726	697
Academic staff salary related costs	135	143	135	143
Non-academic staff salaries	2,397	2,430	2,397	2,430
Non-academic staff salary related costs	611	531	611	531
Depreciation expense - Buildings	204	153	204	153
Depreciation expense - Equipment	574	408	574	408
Other expenses	701	309	701	309
	5,348	4,671	5,348	4,671
13. Student Services				
Academic staff salaries	213	153	213	153
Academic staff salary related costs	42	11	42	11
Non-academic staff salaries	6,689	4,404	6,689	4,404
Non-academic staff salary related costs	736	381	736	381
Depreciation expense - Buildings	437	419	437	419
Depreciation expense - Equipment	65	58	65	58
Other expenses	2,540	1,192	2,540	1,192
	10,722	6,618	10,722	6,618
14. Public Services				
Academic staff salaries	314	248	314	248
Academic staff salary related costs	55	36	55	36
Non-academic staff salaries	1,992	1,717	1,992	1,717
Non-academic staff salary related costs	274	277	274	277
Depreciation expense - Equipment	24	28	24	28
Other expenses	98	140	98	140
Murdoch Retirement Services Ltd	7,066	3,739	6,941	3,692
	9,823	6,185	9,698	6,138
15. Buildings and Grounds				
Non-academic staff salaries	2,960	2,686	2,960	2,686
Non-academic staff salary related costs	477	614	477	614
Depreciation expense - Buildings	125	98	125	98
Depreciation expense - Equipment	261	228	261	228
Other expenses	5,334	4,889	5,334	4,889
	9,157	8,515	9,157	8,515

Notes to and Forming part of the Financial Statements 31 December 2001

	Consolidated		General University	
	2001	2000	2001	2000
	\$ '000	\$ '000	\$ '000	\$ '000

16. Administration & Other General Institutional Services

Academic staff salaries	191	132	191	132
Academic staff salary related costs	32	22	32	22
Non-academic staff salaries	8,240	10,006	8,240	10,006
Non-academic staff salary related costs	1,585	2,328	1,585	2,328
Depreciation expense - Buildings	481	531	481	531
Depreciation expense - Equipment	824	225	824	225
Other expenses	9,948	7,938	9,948	7,938
	21,301	21,182	21,301	21,182

17. Receivables

The provision for doubtful debts represent amounts due and payable for offshore programme student fees.

The HR Education Group in Hong Kong has a debt of \$2,254,946 that is considered doubtful.

Gross debtors	8,515	6,088	8,435	6,048
less provision for doubtful debts	(2,369)	-	(2,369)	-
	6,146	6,088	6,066	6,048

18. Inventories

Bookshop	385	465	385	465
Veterinary Hospital	395	451	395	451
	780	916	780	916

19. Non Current Assets - Loans

Murdoch College Properties Pty Ltd	900	1,102	900	1,102
Club Murdoch	277	291	277	291
The University Company Pty Ltd	-	-	179	179
Howard Court Residents' Association	20	20	20	20
Other	-	(1)	-	(1)
	1,197	1,412	1,376	1,591

20. Current Liabilities - Interest Bearing Liabilities

WA Treasury Corporation				
Student Village Housing	172	166	172	166
Murdoch Retirement Services Ltd	-	3,290	-	3,290
	172	3,456	172	3,456

Notes to and Forming part of the Financial Statements 31 December 2001

	Consolidated		General University	
	2001 \$ '000	2000 \$ '000	2001 \$ '000	2000 \$ '000
21. Grants and Fees in Advance				
Commonwealth Government grants	6,482	6,164	6,482	6,164
Student fees and charges	3,036	1,912	3,036	1,912
Murdoch Retirement Services Ltd	278	189	-	-
	9,796	8,265	9,518	8,076
22. Provisions				
Current				
Annual leave	2,182	1,830	2,177	1,830
Long service leave	4,832	3,763	4,832	3,763
	7,014	5,593	7,009	5,593
Non-current				
Long service leave	3,518	3,409	3,518	3,409
	3,518	3,409	3,518	3,409
Total employee leave entitlements	10,532	9,002	10,527	9,002
23. Non Current Liabilities - Interest Bearing Liabilities				
WA Treasury Corporation				
Student Village Housing	2,797	2,969	2,797	2,969
Murdoch Retirement Services Ltd	5,590	4,500	5,590	4,500
	8,387	7,469	8,387	7,469
24. Cash Assets / (Bank Overdraft)				
Bank accounts	2,210	4,076	(286)	(1,422)
Cash advances	29	17	29	17
	2,239	4,093	(257)	(1,405)
25. Restricted Investments				
Research grants held in investments	8,115	6,740	8,115	6,740
26. Unrestricted Investments				
Bank bills and deposits	20,422	14,471	20,422	14,471
Shares	10	10	10	10
	20,432	14,481	20,432	14,481
less restricted investments	(8,115)	(6,740)	(8,115)	(6,740)
	12,317	7,741	12,317	7,741

Notes to and Forming part of the Financial Statements 31 December 2001

	Consolidated		General University	
	2001	2000	2001	2000
	\$ '000	\$ '000	\$ '000	\$ '000

27. Capital Commitments

Commitments for capital expenditure that have not been provided in the financial statements. These commitments mainly relate to Murdoch Retirement Services Ltd.

Buildings				
Within 1 year	10,980	5,320	10,980	5,320
Later than 1 year, not later than 2 years	15,680	-	15,680	-
	26,660	5,320	26,660	5,320

28. Reserves

Asset Revaluation Reserve				
Opening balance	113,859	113,859	113,859	113,859
Net revaluation increments				
Land	35,545	-	35,545	-
Buildings	6,270	-	6,270	-
Artworks	406	-	406	-
Closing balance	156,080	113,859	156,080	113,859

The asset revaluation reserve is used to record increments and decrements on the revaluation of non-current assets, as described in accounting policy note 1 (c).

Plant, Equipment and Motor Vehicles Reserve				
Opening balance	296	368	296	368
Transfer to (from) reserves	208	(72)	208	(72)
Closing balance	504	296	504	296

Total reserves	156,584	114,155	156,584	114,155
----------------	----------------	----------------	----------------	----------------

29. Retained Profits

Opening balance	156,986	158,181	151,815	158,134
Net profit (loss) from ordinary activities	(2,377)	(1,267)	688	(6,391)
Transfer from (to) reserves	(208)	72	(208)	72
Closing balance	154,401	156,986	152,295	151,815

The difference between consolidated and general funds relates to retained funds of The University Company Pty Ltd \$120,212 (2000 - \$273,135) and Murdoch Retirement Services Ltd \$1,986,489 (2000 - \$4,897,797).

See note 46 to the financial statements.

	Consolidated		General University	
	2001	2000	2001	2000
	\$ '000	\$ '000	\$ '000	\$ '000

30. Joint Interest in Retention Funds Deposit Accounts

The University does not hold any retention fund bank deposit accounts with builders at the end of the current financial year.

Australia and New Zealand Bank	-	10	-	10
Bank of Western Australia	-	12	-	12
National Australia Bank	-	165	-	165
	-	187	-	187

31. Total Operating Expenses Detail by Objective Classification

Annual and long service leave provisions	1,525	1,480	1,525	1,480
Bad and doubtful debts	2,369	-	2,369	-
Books and periodicals	302	241	302	241
Contributions and subscriptions	736	840	712	815
Depreciation - Buildings	3,490	3,369	3,490	3,369
Depreciation - Equipment	6,724	3,814	6,722	3,813
Depreciation - Library Books	2,641	2,046	2,641	2,046
Fuel and power	2,037	2,139	2,037	2,139
Insurance	256	200	256	200
Net loss on disposal of non-current assets	1,833	644	1,832	644
Materials and supplies	25,381	20,095	25,230	19,984
Other expenses	5,770	5,642	5,717	5,681
Murdoch Retirement Services Ltd	7,065	3,739	6,940	3,692
Payroll tax	4,300	4,049	4,291	4,045
Postage, telephone and fax	1,147	1,071	1,147	1,071
Salaries and allowances	69,321	65,111	69,176	65,041
Scholarships	5,128	4,756	5,128	4,756
Special reserves	-	87	-	87
Superannuation	9,080	8,378	9,067	8,374
Travel	2,953	2,787	2,948	2,785
Workers' compensation	333	313	332	312
	152,391	130,801	151,862	130,575

Notes to and Forming part of the Financial Statements 31 December 2001

	Consolidated		General University	
	2001	2000	2001	2000
	\$ '000	\$ '000	\$ '000	\$ '000
32. Reconciliation of profit from ordinary activities to net cash flows provided by operating activities				
Profit from ordinary activities	(2,377)	(1,267)	688	(6,391)
Non-cash items:				
Depreciation expense	12,855	9,229	12,853	9,228
Profits relating to sale of Murdoch Retirement Village units	(8,890)	(4,898)	-	-
Building costs Murdoch Retirement Village units	7,065	3,382	6,940	3,382
Loss on sale of assets	1,833	644	1,832	644
Changes in Assets and Liabilities				
Receivables	(53)	(3,131)	(13)	(3,091)
Advances and prepayments	161	30	160	35
Inventories	136	249	136	249
Provisions	1,530	1,480	1,525	1,480
Accrued liabilities	312	(1,643)	312	(1,643)
Payables	206	1,346	377	1,452
Grants and fees in advance	1,442	6,503	1,442	6,503
Net cash provided by operating activities	14,220	11,924	26,252	11,848

33. Reconciliation of Cash

For the purposes of the statement of cash flow, cash includes cash on hand cash on hand and bank accepted bills and deposits.

Cash at bank and on hand	2,239	4,093	(257)	(1,405)
Bank accepted bills and deposits	20,432	14,481	20,432	14,481
Cash as per the Statement of Cash Flows	22,671	18,574	20,175	13,076

34. Losses

Where appropriate, reports were made to the police and insurance claims submitted where the value exceeded the excess liability on the University's insurance policy.

Theft and default	122	38	122	38
-------------------	-----	----	-----	----

35. Write-Offs

Bad debts written off during the financial year	11	18	11	18
---	----	----	----	----

Consolidated		General University	
2001	2000	2001	2000
\$ '000	\$ '000	\$ '000	\$ '000

36. Remuneration of Auditor

The total fees paid or due and payable to the Office of the Auditor General for the financial year is as follows:

Auditing the accounts (excluding GST)	96	93	87	85
---------------------------------------	----	----	----	----

37. Non Current Investments

Murdoch University has a 45% ownership interest in Murdoch College Properties Pty Ltd, a company whose principal activity is to provide the infrastructure on the University's campus for the secondary school operations of Murdoch College (Inc). The remaining 55% interest is held by Murdoch College International, 100% owned by the Alexander Education Group. See note 47 to the financial statements.

	\$	\$	\$	\$
Associates				
Equity accounted shares in associated entities				
- retained profits (losses) after tax and before audit	(14,722)	56,182	-	-
Shares in associated entities at cost	-	-	45	45
	(14,722)	56,182	45	45

	Consolidated		General University	
	2001	2000	2001	2000
	\$ '000	\$ '000	\$ '000	\$ '000

38. Remuneration of Senior Officers

The total of fees, salaries, bonuses and motor vehicle benefits (excluding superannuation which is reported under note 40) received or due and receivable for the financial year by Senior Officers of the University.

Actual total remuneration excluding superannuation	1,315	1,171	1,315	1,171
--	-------	-------	-------	-------

The number of Senior Officers whose total of fees, salaries and other benefits, received or were due and receivable, for the financial year fall within the following bands:

\$ 100,001 - \$ 110,000	2	2	2	2
\$ 110,001 - \$ 120,000	1	1	1	1
\$ 120,001 - \$ 130,000	1	-	1	-
\$ 130,001 - \$ 140,000	2	4	2	4
\$ 140,001 - \$ 150,000	1	-	1	-
\$ 150,001 - \$ 160,000	-	1	-	1
\$ 160,001 - \$ 170,000	1	-	1	-
\$ 170,001 - \$ 180,000	-	1	-	1
\$ 280,001 - \$ 290,000	1	-	1	-

The remuneration of Senior Officers excludes the Vice Chancellor whose remuneration is reported under note relating to Remuneration of Senate Members.

The actual total remuneration does not include superannuation benefits, unpaid bonuses and motor vehicle lease costs that are included in total salary package.

The total salary packages for Senior Officers of the University (including superannuation) were as follows:

	Base \$'000	Total salary \$'000	Components remuneration
Deputy Vice Chancellor	150	196	Base salary, superannuation, annual leave loading, motor vehicle and performance bonus.
Pro Vice Chancellor (Academic)	100	140	Base salary, superannuation, annual leave loading, motor vehicle and performance bonus.
Pro Vice Chancellor (Research)	127	177	Base salary, superannuation, motor vehicle and performance bonus.
Pro Vice Chancellor (Resource Management)	171	282	Base salary, superannuation, motor vehicle and performance bonus (paid at end of contract).
Executive Dean, BITL	120	167	Base salary, superannuation, motor vehicle and performance bonus.
Executive Dean, DSE	100	144	Base salary, superannuation, motor vehicle and performance bonus.
Executive Dean, SSHE	100	144	Base salary, superannuation, motor vehicle and performance bonus.
Executive Dean, VBS	120	167	Base salary, superannuation, motor vehicle and performance bonus.
Principal, Rockingham Campus	100	144	Base salary, superannuation, motor vehicle and performance bonus.

Notes to and Forming part of the Financial Statements 31 December 2001

	Consolidated		General University	
	2001	2000	2001	2000
	\$ '000	\$ '000	\$ '000	\$ '000

39. Remuneration of Senate Members

The total of fees, salaries and other benefits (excluding superannuation which is reported under note 40) received or due and receivable for the financial year by Senate Members.

Actual total remuneration excluding superannuation	277	277	277	277
--	-----	-----	-----	-----

The number of Senate Members whose total of fees, salaries and other benefits, received or were due and receivable for the financial year falls within the following band:

\$ 270,001 - \$ 280,000	1	1	1	1
-------------------------	---	---	---	---

The Vice Chancellor is the only member of Senate who receives fees, salaries and other benefits.

The total salary package for the Vice Chancellor (including superannuation) was as follows:

	Base \$'000	Total salary \$'000	Components remuneration
Vice Chancellor	220	338	Base salary, superannuation, housing allowance and gross up, motor vehicle and FBT, home telephone rental and potential performance bonus.

40. Superannuation Fund Contributions

In respect of Senate Members and Senior Officers the following contributions were made or became payable for the financial year:

Other Superannuation Funds

Senate Members	47	45	47	45
Senior Officers	172	165	172	165
	219	210	219	210

There are no Senate Members and Senior Officers presently employed who are members of the Superannuation and Family Benefits Scheme.

41. Explanatory Statement

The following compares estimates and actual results for the financial year and actual revenues and expenses from ordinary activities for the financial year and immediately preceding financial year.

The explanatory statement reports significant variations exceeding 15 per cent and \$200,000.

	Note	2001 Actual \$ ' 000	2001 Estimate \$ ' 000	2001 Variation \$ ' 000	2000 Actual \$ ' 000	Actual/ Actual Variation \$ ' 000
Revenues from ordinary activities						
Commonwealth Government financial assistance	(e)	61,292	58,848	2,444	53,443	7,849
Higher Education Contribution Scheme	(e)	26,697	23,474	3,223	22,953	3,744
Other research grants and contracts	(a)	17,782	-	17,782	18,173	(391)
Donations and bequests	(a)	512	-	512	597	(85)
Investment income	(a)	847	400	447	1,045	(198)
Fees and charges	(a) (b) (i)	36,989	18,930	18,059	28,138	8,851
Trading income	(a)	2,335	-	2,335	2,046	289
Other	(a)	3,560	370	3,190	3,139	421
		150,014	102,022	47,992	129,534	20,480
Expenses from ordinary activities						
Academic activities	(c) (f) (g)	87,819	57,123	(30,696)	76,761	11,058
Libraries	(c) (f) (g)	8,221	5,802	(2,419)	6,869	1,352
Other academic activities	(c) (f) (g)	5,348	1,242	(4,106)	4,671	677
Student services	(c) (d) (f) (g)	10,722	1,816	(8,906)	6,618	4,104
Public services	(b) (c) (f) (g) (i)	9,823	-	(9,823)	6,185	3,638
Buildings and grounds	(c) (f) (g)	9,157	4,904	(4,253)	8,515	642
Administration and other general institutional services	(c) (d) (f) (g) (h)	21,301	22,590	1,289	21,182	119
		152,391	93,477	(58,914)	130,801	21,590

Estimates are prepared using a funding model for DETYA, fee-paying allocations and the capital budget. They do not incorporate revenue and expenses outside these allocations. Further, the funding model format differs from the reporting format. The University monitors actual revenue and expenditure against the funding model format.

Variations between actuals and estimates for 2001

- (a) Revenue from other research grants and contracts, donations and bequests, parking, rentals, trading, trust fund interest, special funds, trust funds and miscellaneous funds have not been included in estimates.
- (b) Revenue of \$8.8 million (\$4.8 - 2000) and expenses of \$7 million (\$3.7 - 2000) relating to Murdoch Retirement Services Ltd. have not been included in estimates.
- (c) Expenses relating to depreciation of buildings and equipment, research grants, contracts, donations, bequests, Veterinary Hospital, Bookshop, trust, special and miscellaneous funds have not been included in estimates.

Variations between actuals for 2001 and 2000

- (d) The Office of Student Services was established in 2001 and expenses relating to this office were charged to Student Services in 2002 and to Administration Services in previous years. The actual expenses for Student Services have increased and Administration Services decreased as a result of this action.
- (e) The actual revenue for the Commonwealth Government financial assistance and Higher Education Contribution Scheme for 2000 was less by \$4,177,301 and \$1,713,920 for the 2000 year. This is a result of the December 1999 payment being treated as revenue for 1999 and not as a prepayment as in previous and current years.
- (f) Depreciation of computer and other expenses increased from \$3,814,000 in 2000 to \$6,724,000 in 2001 as a result of a change in the method of depreciation from the reducing balance method to the straight line method.
- (g) Salaries and on-costs increased from \$79,331,000 in 2000 to \$84,559,000 in 2001 mainly as a result of salary increases. Approved under Academic and General staff enterprise bargaining agreements.
- (h) An amount of \$2,369,000 was provided for doubtful offshore programme student fees debts in 2001. There was no provision for bad and doubtful debts in 2000.
- (i) Increases in revenue and expenses for Murdoch Retirement Services Ltd. as a result of increased sales of retirement village units.

Notes to and Forming part of the Financial Statements 31 December 2001

42. Financial Instruments

(a) Net Fair Value of Financial Assets and Liabilities

The carrying amounts of all the University's financial instruments approximate their net fair values.

(b) Interest Rate Risk Exposures

The following tables provide comparative interest rate risks to the University for 2000 and 2001:

2001	Floating Interest Rate	Fixed Interest Maturing		Non Interest Bearing	Total \$000	Average Rate	Interest
	\$000	Six months or less \$000	6 months to one year \$000	\$000		Floating %	Fixed %
Financial Assets							
Cash (i)	2,239	20,422			22,661	4.7	4.3
Shares				10	10		
Student loans				61	61		
Receivables				6,085	6,085		
Loans	900			297	1,197	8.4	
Financial Liabilities							
Interest bearing liabilities	8,559				8,559	6.5	
Employee Entitlements				10,532	10,532		
Payables				2,851	2,851		

2000	Floating Interest Rate	Fixed Interest Maturing		Non Interest Bearing	Total \$000	Average Rate	Interest
	\$000	Six months or less \$000	6 months to one year \$000	\$000		Floating %	Fixed %
Financial Assets							
Cash (i)	4,093	12,860	1,611		18,564	5.3	6.3
Shares				10	10		
Student loans				93	93		
Receivables				5,995	5,995		
Loans	900			512	1,412	10	
Financial Liabilities							
Interest bearing liabilities	10,925				10,925	6.5	
Employee Entitlements				9,002	9,002		
Payables				2,879	2,879		

(i) Bank Bills and Deposits

(c) Receivables

Debtors are carried at nominal amounts less provision for doubtful debts.

Debtors outstanding as at reporting date totalled \$8,515,000 less provision for doubtful debts \$2,369,000.

Student loans outstanding as at reporting date totalled \$61,606.

Credit sales of other products are on 30 day terms.

Tuition fees for international students are payable upon confirmation of acceptance of an offer of admission. After the first semester of enrolment, payment of tuition fees is required by the end of week one of each semester. If fees remain unpaid as at that date, the student's enrolment may be cancelled or a late payment charge may be applicable.

(d) Payables

Trade liabilities are normally settled within 30 days or on shorter terms as agreed.

(e) Employee Entitlements

Employee Entitlements are presented in accord with Australian Accounting Standard 30 (AAS 30).

These amounts are adjusted annually to reflect changes in annual and long service leave entitlements.

(f) Credit Risk Exposures

The University's maximum exposure to credit risk at balance date in relation to each class of recognised financial asset is the carrying amount of those assets indicated in the statement of financial position.

The University's credit risk is spread over a significant number of parties and is concentrated primarily in Australia.

43. Segment Information

The University operates within one industry segment being education and revenue is predominately earned within Australia.

Therefore, no segment information has been reported.

44. Contingent Liabilities

The University is a defendant in an action in the Victorian Supreme Court, in which a number of plaintiff's being subscribers in the Australian Wildflower Trust, claim damages suffered by them as a result of their investment in the Trust.

45. Events Subsequent to Reporting Date

There were no events subsequent to the reporting date that have a material effect on the financial statements for the reporting period.

46. Subsidiary Bodies

	The University Company Pty Ltd	
Name	Company	Perth
Legal Form / Place of Incorporation	Company	Perth
Proportion Held		100%
Cost of Investment	Nil	
Contribution to Operating Result	Loss of \$152,225 for the year	

The retained profits of The University Company Pty Ltd were \$120,212 as at 31 December 2001

	AM-SI Pty Ltd.	
Name	Company	Perth
Legal Form / Place of Incorporation	Company	Perth
Place of Incorporation	Perth	
Proportion Held		100%
Cost of Investment	Nil	
Contribution to Operating Result	Nil	

	Murdoch International Pty Ltd.	
Name	Company	Perth
Legal Form / Place of Incorporation	Company	Perth
Place of Incorporation	Perth	
Proportion Held		100%
Cost of Investment	Nil	
Contribution to Operating Result	Nil	

	Virtual University of Australia Pty Ltd.	
Name	Company	Perth
Legal Form / Place of Incorporation	Company	Perth
Proportion Held		100%
Cost of Investment	Nil	
Contribution to Operating Result	Nil	

	Murdoch Retirement Services Ltd	
Name	Company	Perth
Legal Form / Place of Incorporation	Company	Perth
Proportion Held		100%
Cost of Investment	Nil	
Contribution to Operating Result	Loss of \$2,906,035 for the year	

Murdoch Retirement Services Ltd made a donation of \$12 million to Murdoch University from retained profits as at 31 December 2000 and from profits for the 2001 financial year.

The retained profits of Murdoch Retirement Services Ltd were \$1,986,489 as at 31 December 2001

	MS Biotechnology Pty Ltd	
Name	Company	Perth
Legal Form / Place of Incorporation	Company	Perth
Proportion Held		57%
Cost of Investment	Nil	
Contribution to Operating Result	Nil	

47. Operating Leases

The University has the following operating leases in respect of equipment and motor vehicles. The University's liability for future payments under these leases are:

	Equipment \$'000	Motor Vehicles \$'000	Total \$'000
Not later than one year	429	68	497
Later than one year and not later than five years	790	12	802
Later than five years	-	-	-
	1,219	80	1,299

48. Associated Entities

Murdoch College Properties Pty Ltd has a year end reporting date of 30 June. The following financial information is based on unaudited financial statements provided by Murdoch College Properties Pty Ltd for the year ended 31 December 2001.

Name and Principal activities	Reporting date of associate 2001 \$	Ownership interest		Voting power 2001 \$	Carrying amount (losses) 31 December 2001 \$
		At 30 June 2001 \$	At 31 December 2001 \$		
Murdoch College Properties Pty Ltd					
-lessor of land & buildings	30 June	45%	45%	45%	(28,998)

	2001 \$
Operating profits (losses) before income tax	(10,747)
Income tax (expense) benefit	(4,396)
Share of net results (losses) of associates	(15,143)

	Retained profits (losses) \$	Other reserves \$	Cost \$	Total carrying amount (losses) \$
Balance at the beginning of the year	56,137	-	45	56,182
Murdoch College Properties Pty Ltd after audit adjustments	(70,037)	-	-	(70,037)
	(13,900)	-	45	(13,855)
Movements during the year				
Share of net result (before income tax)	(10,747)	-	-	(10,747)
Income tax (expense) benefit	(4,396)	-	-	(4,396)
Dividends received and receivable	-	-	-	-
Balance at the end of the year	(29,043)	-	45	(28,998)

Associate and summary financial information	Murdoch College Properties Pty Ltd	
	2000 \$	2001 \$
Total assets	9,437,434	8,809,866
Total liabilities	9,468,223	8,854,769
Total equity	(30,789)	(44,903)
Net profit (loss) before income tax	(30,889)	(23,883)
Net profit (loss) after income tax	(30,889)	(14,114)

49. Acquittal of Commonwealth Government Grants

Amounts received and expended pursuant to the Higher Education Funding Act 1988.

	Operating Grant excluding HECS		HECS	
	2001 \$'000	2000 \$'000	2001 \$'000	2000 \$'000
Financial Assistance in advance (paid in the previous reporting period for the current reporting period)	4,245	4,076	1,812	1,714
Financial Assistance received during reporting period	55,835	52,615	23,336	21,353
Contributions received from students	-	-	3,419	3,412
Financial Assistance in advance (received in the reporting period for the next reporting period)	(4,492)	(4,245)	(1,870)	(1,812)
Revenue attributed to the reporting period	55,588	52,446	26,697	24,667
Surplus prior year	181	296	-	-
Funds available for the reporting period	55,769	52,742	26,697	24,667
Expenses for current current period	(55,272)	(52,561)	(26,697)	(24,667)
Surplus for reporting period	497	181	-	-

	Capital Development Pool		ARC Large Research	
	2001 \$'000	2000 \$'000	2001 \$'000	2000 \$'000
Financial Assistance in advance (paid in the previous reporting period for the current reporting period)	-	-	-	48
Financial Assistance received during reporting period	520	509	1,159	844
Financial Assistance in advance (received in the reporting period for the next reporting period)	-	-	-	-
Revenue attributed to the reporting period	520	509	1,159	892
Surplus prior year	-	-	480	472
Funds available for the reporting period	520	509	1,639	1,364
Expenses for current current period	(520)	(509)	(913)	(884)
Surplus for reporting period	-	-	726	480

Notes to and Forming part of the Financial Statements 31 December 2001

	ARC SPIRT		ARC International Researcher Exchange	
	2001 \$'000	2000 \$'000	2001 \$'000	2000 \$'000
Financial Assistance in advance (paid in the previous reporting period for the current reporting period)	-	51	-	2
Financial Assistance received during reporting period	1,152	1,053	21	18
Financial Assistance in advance (received in the reporting period for the next reporting period)	-	-	-	-
Revenue attributed to the reporting period	1,152	1,104	21	20
Surplus prior year	327	216	9	8
Funds available for the reporting period	1,479	1,320	30	28
Expenses for current current period	(1,112)	(993)	(22)	(19)
Surplus for reporting period	367	327	8	9

	DETYA International Postgrad Research		ARC Infrastructure Equipment & Facilities	
	2001 \$'000	2000 \$'000	2001 \$'000	2000 \$'000
Financial Assistance in advance (paid in the previous reporting period for the current reporting period)	-	-	-	-
Financial Assistance received during reporting period	268	232	-	-
Financial Assistance in advance (received in the reporting period for the next reporting period)	-	-	-	-
Revenue attributed to the reporting period	268	232	-	-
Surplus prior year	-	25	3	3
Funds available for the reporting period	268	257	3	3
Expenses for current current period	(268)	(257)	-	-
Surplus for reporting period	-	-	3	3

	ARC Special Research Initiatives		DETYA Small Grants	
	2001 \$'000	2000 \$'000	2001 \$'000	2000 \$'000
Financial Assistance in advance (paid in the previous reporting period for the current reporting period)	-	-	24	-
Financial Assistance received during reporting period	(1)	-	276	340
Financial Assistance in advance (received in the reporting period for the next reporting period)	-	-	-	(24)
Revenue attributed to the reporting period	(1)	-	300	316
Surplus prior year	9	31	159	121
Funds available for the reporting period	8	31	459	437
Expenses for current current period	(8)	(22)	(414)	(278)
Surplus for reporting period	-	9	45	159

	DETYA Infrastructure Block		DETYA Australian Postgraduate Awards	
	2001 \$'000	2000 \$'000	2000 \$'000	2000 \$'000
Financial Assistance in advance (paid in the previous reporting period for the current reporting period)	83	-	-	-
Financial Assistance received during reporting period	1,079	1,058	1,243	1,129
Financial Assistance in advance (received in the reporting period for the next reporting period)	(120)	(83)	-	-
Revenue attributed to the reporting period	1,042	975	1,243	1,129
Surplus prior year	586	501	-	15
Funds available for the reporting period	1,628	1,476	1,243	1,144
Expenses for current current period	(913)	(890)	(1,243)	(1,144)
Surplus for reporting period	715	586	-	-

Summary of Unspent Grants			
Category of Grant	Unspent Financial Assistance as at 31 December		
	2001 \$'000	2000 \$'000	2000 \$'000
Operating excluding HECS	497		181
ARC Large Research	726		480
ARC SPIRT	367		327
ARC International Researcher Exchange	8		9
ARC Infrastructure - Equipment & Infrastructure	3		3
ARC Special Research Initiatives	-		9
Small Grants	45		159
Infrastructure - Block	715		586
Total	2,361		1,754

It is expected that the total amount of the unspent financial assistance will be approved by the Commonwealth Government for carry over to 2002