

# statement of compliance

28 February 2003  
The Honourable Alan Carpenter, MLA  
Minister for Education  
12th Floor  
Dumas House  
2 Havelock Street  
West Perth  
WA 6005

Dear Minister

In accordance with Section 66 of the Financial Administration and Audit Act 1985, I hereby submit for your information and presentation to Parliament the Annual Report of Murdoch University for the year ended 31 December 2002.

The Report has been prepared in accordance with the provisions of the Financial Administration and Audit Act 1985.

Yours sincerely

A handwritten signature in black ink, appearing to read "J.C. Bostan", with a horizontal line drawn underneath it.

Chancellor  
Murdoch University

# contents

VICE CHANCELLOR'S REPORT	4
HIGHLIGHTS	6
Leading historian appointed new Chancellor	6
Indigenous conference an international event	6
Moving story of Aboriginal war veterans	7
Disability work wins Employer of the Year Award	7
Premier's Award for Excellence	7
TV broadcasters, universities combine for Interactive TV research	7
Scratching a billion-dollar itch	8
Legal links with Indonesia	8
Law clinic scores Human Rights award	8
Record year for ARC grants	8
Murdoch students for BBC TV scoop	9
Students dominate Japanese scholarship pool - again	9
Eco-building an environmental winner	9
Biomedical boost in diseases battle	10
Beating the salt crisis	10
Medic legumes may hold disease key	10
World-class research targets malaria, sleeping sickness	10
Stars of the academic world	11
Medical engineering for Murdoch	11
20 years with the WHO	11
Centre for genetic testing	11
Beyond genetic analysis	12
World-class economist	12
Common sense in the Law	12
Murdoch Commerce student beats country's best	12
TV Science Stars	12
Law teachers meet at Murdoch	12
Happy Campers	12

REPORT ON OPERATIONS	13	CERTIFICATION OF PERFORMANCE INDICATORS	51
MISSION AND VISION	14	CERTIFICATE OF COMPLIANCE	52
TEACHING AND LEARNING	16	STATEMENT OF EXPENDITURE	53
RESEARCH REPORT 2002	18	FINANCIAL STATEMENTS	54
REGIONAL ENGAGEMENT	22	CERTIFICATION OF FINANCIAL STATEMENTS	55
INTERNATIONAL OUTLOOK	23	AUDITOR GENERAL LETTER	56
HUMAN RESOURCES	24	STATEMENT OF FINANCIAL POSITION	58
EQUITY	24	STATEMENT OF FINANCIAL PERFORMANCE	59
CHARACTERISTICS OF THE STUDENT POPULATION	26	STATEMENT OF CASH FLOWS	60
Overview	26	NOTES TO THE FINANCIAL REPORTS	61
Principal Features of the Year	26		
Growth Plan	26		
Summary Statistics	27		
Student Equity Statistics	32		
Report of Operations Commonwealth Operating Grant and Load	35		
FUNCTIONAL CHART	36		
ORGANISATIONAL CHART	37		
OFFICERS OF THE UNIVERSITY	38		
SENATE	38		
AUDITOR GENERAL LETTER	40		
KEY PERFORMANCE INDICATORS	41		
Introduction	41		
Summary of Indicators	41		
Excellence in Teaching and Learning	41		

# vice chancellor's report

Murdoch University took significant steps in 2002 towards its goal of diversifying its financial and educational resources with the purpose of maintaining its reputation as one of Australia's outstanding universities.

A major strategic review has commenced and was near completion at the end of 2002. This has involved a broad consultative process leading to a University-wide strategic plan that focuses on the essence of what makes Murdoch distinctive. In order to achieve the University's vision, key goals have been set in relation to teaching and learning, research, community development and management.

It is widely recognised that quality in teaching and research is the foundation upon which students, researchers and investors choose universities, on an international as well as a national basis.

Murdoch maintained its outstanding reputation for teaching and student satisfaction in 2002. *The Good Universities Guide*, an independent, national publication, awarded Murdoch its top, five-star rank for student satisfaction for the seventh time in eight years. This is a success story unprecedented in Australia and one of which we are immensely proud.

In addition, Murdoch University maintained its excellent record in the annual Course Experience Questionnaire (CEQ), ranking first or second in Australia on the "Good Teaching" scale in 14 out of 29 subject areas.

Murdoch takes great pride in being a multi-culture, multi-faith campus. In part, this is based on the presence of fee paying international students who bring significant cultural, individual and educational benefits to Australian universities. They also provide an important income stream for which there is intense competition between States, regions and individual universities. Our competitors in this field include growing numbers of Asian countries as well as the traditional leaders, the USA and the UK. Currently, international student numbers at Murdoch are growing. The challenge will be to maintain that growth by providing quantifiably excellent education and research and communicating that excellence not only to international students but also, and most importantly, to domestic students.

Murdoch is one of the leading research universities in Australia, ranking in the top twelve on a per capita basis. Our industry links provide a solid base for generating research and consultancy income. The manner in which our academic and

research divisions are structured ensures that we remain as flexible as possible, able to take advantage of research opportunities as they arise while maintaining our focus on teaching and community service.

Foremost among the steps taken to strengthen our community outreach in 2002 were the establishment of the Murdoch University Foundation and our regional development in the corridor to the south-west of Perth, through our campuses at Rockingham and Mandurah.

The establishment of the Murdoch University Foundation is a key initiative for the University. The Foundation provides a vehicle for the building of an endowment that will allow Murdoch to make a difference, both now and in the future. We will develop the endowment by seeking donations from the public and corporate sector and, in the future, by generating profits from appropriate investment activities. Our long-term, strategic goal is to provide the University, through the Foundation, with the discretionary funding required to assist the University in advancing learning and knowledge in line with our strategic directions.

The 'Building Law at Murdoch' campaign has been a major success with pledges of over \$1.1 million received to support a dedicated Law Building at the South Street Campus. This will also provide dedicated offices for the Southern Community Advocacy, Legal and Education Service as well as for the Murdoch Student Law Society's Legal Advice Centre. The University has received enormous support from the legal profession and the wider community.

Our expansion into the South-West region also fulfils a strategic imperative to grow the University and to provide tertiary education opportunities to a fast-growing community with low participation in university education. We received an allocation of \$2.5 million from the Commonwealth Government to build a University Learning Centre in the Peel region, co-located with Mandurah Senior College and Challenger TAFE. This success is extremely good news for individuals, community groups and business in the region because it will enable greater access to university education and provide a locus for research and development.

Senate undertook a major review of its governance in late 2001, designed to improve its efficiency and effectiveness. Many of the resulting changes came into effect in 2002 including

improved induction for new Senators and enhanced information for Senate meetings. Senate also reviewed its committee system in 2002, resulting in a small reduction in committees; an improved selection process for Senate committee members, including expected competencies; guidelines on the use of Senate working parties and a statement on confidentiality of Senate committee business. The University also commissioned a review of Academic Council, which led to a reduction in the size of the Council from 36 to 29 members.

A Senate working party on University companies and consultancies reviewed how to effectively manage subsidiaries of the University in line with good corporate governance. This led to a decision that all commercial and consulting activities undertaken by the University must be conducted through entities with limited liability; formation of a holding company to contain and control all commercial and consulting activities of the University; and creation of a new position of University Company Secretary. The review also resulted in a stronger policy framework for the conduct of commercial activities.

Murdoch commenced a restructure of its marketing and communication services during 2002 to provide a coordinated total university marketing plan, alignment of domestic and international marketing and to ensure that we communicate to the public and Government our value and what needs to be done to maintain that value.

Murdoch University maintained and enhanced its academic and research reputation in 2002. Through excellence in teaching and research, with initiatives such as regional development and the new Foundation, and through strategic changes in the administrative and academic divisions of the University, Murdoch is positioning itself to meet the challenges that will confront universities over the next decade and longer.

We have energetic, highly motivated and superbly qualified staff, a sound financial position and standards second to none in the tertiary sector. We look forward to further success in 2003 and beyond.

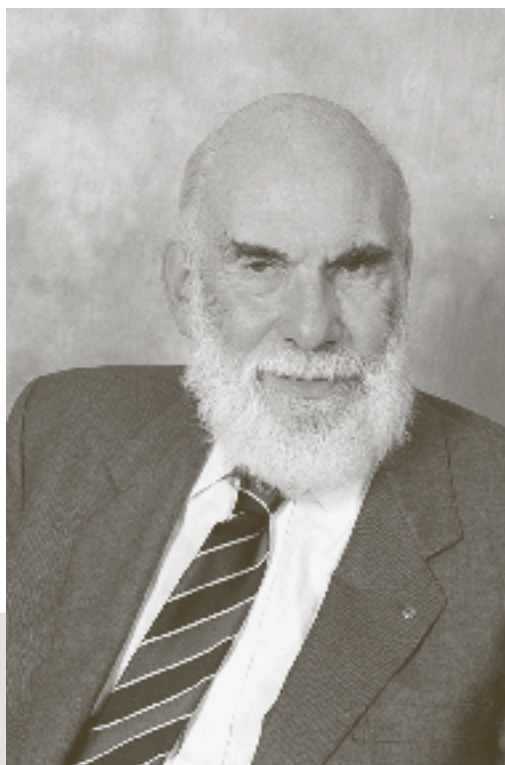
**Professor John Yovich**  
*Vice Chancellor*

# highlights

2002 was a landmark year for Murdoch University, with the appointment of a new Vice Chancellor, the establishment of the Murdoch University Foundation and the implementation of the Regional Engagement operational plan. Other achievements of this successful year include the following highlights:

## Leading historian appointed new Chancellor

Emeritus Professor Geoffrey Bolton, one of Australia's pre-eminent historians, was appointed Chancellor of Murdoch University in 2002. Professor Bolton, the foundation Chair of History at Murdoch in 1973, was on the planning board for the University and was pro-Chancellor for a number of years, with considerable input to Murdoch's education and management profile. He replaced the Hon Fred Chaney AO, who retired as Chancellor to concentrate on the demanding issues of Reconciliation and Native Title.



## Indigenous conference an international event

A National Indigenous Conference at Murdoch in July attracted 300 delegates from Australia and around the world. The *Treaty, Advancing Reconciliation* conference focused on racism, land and reconciliation in a global context. Speakers included Mr Paul Okalik, the Premier of the government of the Inuit territory of Canada; Olympian Nova Peris; political leader Eddie Mabo Junior; and Chief Justice the Hon David Malcolm. The conference explored indigenous rights, existing treaty models and agreements, and the implications of negotiating a treaty.

## **Moving story of Aboriginal war veterans**

Murdoch film-maker and Aboriginal student Glen Stasiuk has produced a superb 40-minute documentary film telling the story of Aboriginal soldiers who fought and died for Australia. Called *The Forgotten*, the film examines the prejudice faced by these soldiers in the armed forces, and the honour they felt in representing their nation. Featuring veterans from both World Wars, from Korea, Vietnam, the Persian Gulf and East Timor, the film took two years to make and included extensive research in WA and Canberra. Mr Stasiuk, who wrote, produced and directed the film, said it had been inspired by his family's history and the respect he felt for the ANZAC "black diggers".

## **Disability work wins Employer of the Year Award**

For the second year in a row, Murdoch won the prestigious Prime Minister's Telstra Employer of the Year Award for its long-term commitment and continuous improvement in employing people with a disability. The citation noted that Murdoch had "shown significant leadership as employer of choice for people with disabilities". The award recognised Murdoch's inclusive policies and processes across the board in providing genuine and ongoing career opportunities for people with a disability.

## **Premier's Award for Excellence**

Murdoch's inclusive approach to education was once again rewarded, this time with the Premier's Award for Excellence in Public Sector Management for Education and Skills Development. Given jointly to Murdoch and its educational partners – Mandurah Senior College and Challenger TAFE – the award recognises the innovative partnership and seamless education provided at the Peel Education and TAFE Campus. WA's first co-located and multi-partner campus gives secondary students access to TAFE and university units during their final year of high school. Challenger TAFE students also benefit from recognition of their studies by Murdoch University. The partnership was established under Murdoch's Regional Engagement policy by which it seeks to engage with communities in the Rockingham/ Peel/ Kwinana area to increase their participation in university education, and to add value to the local community through relevant research and educational initiatives.



## **TV broadcasters, universities combine for Interactive TV research**

A research consortium including all three national commercial television broadcasters, the ABC, SBS, WA's four public universities, the Australian Research Council, and a number of other companies and associations, provided \$1.7 million to build an interactive television research laboratory at Murdoch. The facility – located in Murdoch's Interactive Television Research Institute – will have state-of-the-art audience measurement systems, and the ability to simulate digital TV, broadband and personal video recorders. Its aim is to provide solid consumer research to motivate and illuminate the development of the nascent interactive TV industry. A further project will explore ways in which interactive television can enhance children's television programs.



### Scratching a billion-dollar itch

A new company set up by Murdoch University and animal health company Imugene Pty Ltd is hoping to take a big bite out of the worldwide flea control market, currently worth several billion dollars a year. Paragen Pty Ltd is working to produce a vaccine based on flea proteins not normally exposed to dogs. Murdoch researchers associated with the project hope to prove the concept of the vaccine over the next two years, then proceed to practical trials.

### Record year for ARC grants

Murdoch's outstanding research strengths and its policy of concentrating on areas of research strength were the factors behind the University's record achievement in the Australian Research Council's (ARC) grants for 2003. The University's ARC research income for 2003 was \$4,024,955, an increase of nearly \$1 million over the previous best figure of \$3,262,492 for 2002. Major coups in the funding included \$630,000 to establish a facility for plant genetics and \$800,000 for the Murdoch Interactive Television Research Institute.

### Legal links with Indonesia

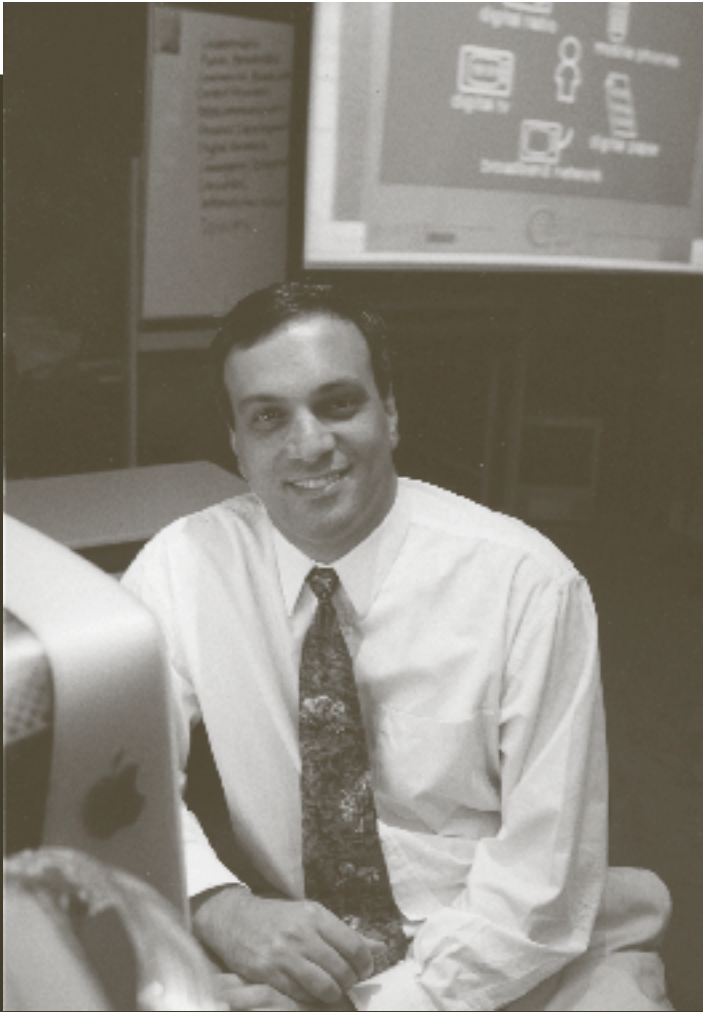
Murdoch University and Sam Ratulangi University in Indonesia will work together to develop legal, academic and research activities. A memorandum signed this year between the two institutions will create new research, teaching and exchange opportunities with Indonesia's biggest Faculty of Law and will lead to opportunities for other Murdoch programs such as veterinary science, engineering, business and intellectual property.

### Law clinic scores Human Rights award

The Community Clinic of Murdoch School of Law has won the law award in the Human Rights Awards for 2002. The award recognised the clinic for its work with young people, refugees and asylum seekers, women escaping domestic violence and tenants in public housing. Since SCALES (the Southern Community Advocacy, Legal and Education Service) was established in 1997, Murdoch law students have provided legal support to more than 4000 clients and more than 8000 information/referral services.







### **Murdoch students for BBC TV scoop**

Four students from Murdoch's Interactive Television Research Institute won a research and training placement with the BBC in London and with Procter & Gamble Europe's interactive marketing team. With interactive television in its infancy, the Institute has one of the very few university programs exploring the potential of the medium, one reason why the BBC's Interactive Factual and Learning Division was keen to develop links with Murdoch. BBC Division head Liz Cleaver said introducing academic research to the processes and psychology affecting interactive television would be extremely valuable. The Murdoch Institute is headed by Professor Duane Varan, – last year's Australian University Teacher of the Year.



### **Students dominate Japanese scholarship pool - again**

Murdoch University's dominance in winning Japanese scholarships continued in 2002, when it won both of two \$40,000 WA Government scholarships for students to spend a year studying at a Japanese university. Murdoch students majoring in Japanese studies have won 18 of the possible 24 scholarships offered since 1991. The cumulative value of all scholarships awarded to Murdoch students since 1991 – by the Japanese, WA and Australian governments - is now \$2.2 million. Murdoch's success in placing and financing the study of more than 130 students in five exchange universities in Japan is unmatched by any university in Australia.

### **Eco-building an environmental winner**

Murdoch's world-class environmental credentials were recognised yet again in October when its Environmental Technology Centre won the Eco Building category of the WA Environment Awards. The ETC was chosen because of its environmentally-sustainable technologies used in a practical setting. The ETC complex is designed to maximise natural light and cross-ventilation and uses its waste water for the permaculture gardens. It is built from recycled and recyclable materials that enhance natural cooling and warming, including a substance under the floor that controls temperature by releasing and absorbing heat. Everything on site is recycled and the building is run on renewable energy. No "ivory tower", it was specifically designed to use techniques that would be effective and practical in everyday settings in the community.

## Biomedical boost in diseases battle

The treatment and cure of diseases such as malaria, cancer and diabetes may soon be enhanced by research through a new Fellowship program at the WA Biomedical Research Institute. Over the next four years, the \$500,000 program – funded jointly by WABRI partners Murdoch University, Curtin University and the Macquarie Bank Foundation – will support a senior research fellow, three postgraduate scholars and six honours scholars. Their work will bring a significant biomedical boost to research into these and other diseases.

## Beating the salt crisis

With salt now recognised as one of the most important problems facing farmers across Australia, Murdoch Professor Rudi Appels has been employed by the WA Agriculture Department and the State Agricultural Biotechnology Centre to develop a salt-tolerant wheat. He will use molecular techniques and field research to find a salt-tolerant gene that can be used to produce wheat that can prosper in salty soil.

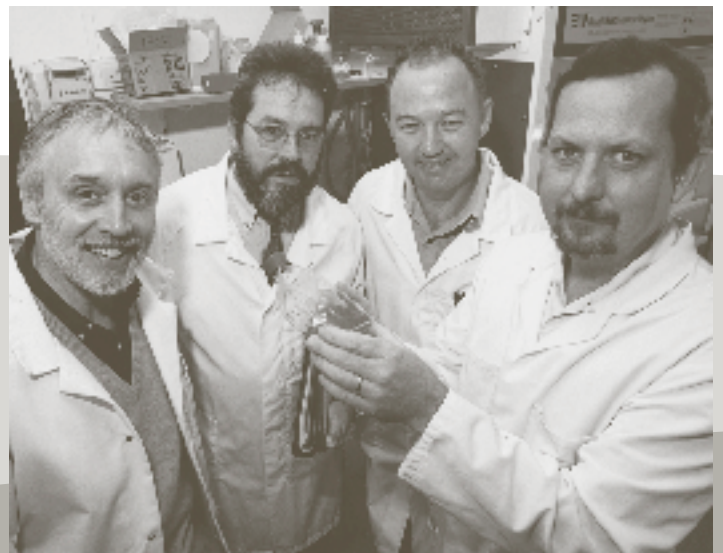


## Medic legumes may hold disease key

A \$2.6 million grant from the Grain Research and Development Corporation will be used for research into the genes of barrel medic, a legume commonly used in sheep pastures and which resists diseases that attack many crop species. Australia has a collection of about 2500 barrel medic varieties. The legume has been adopted as a model plant for research as it is particularly useful to study due to the genetic resources found in the collection and because it interacts well with nitrogen-fixing rhizomes and disease-causing fungi. The research will be undertaken jointly by Murdoch's Australian Centre for Necrotrophic Fungal Pathogens and the CSIRO, in facilities to be constructed at Murdoch and UWA.

## World-class research targets malaria, sleeping sickness

Human parasites such as malaria, sleeping sickness and giardia will be the target of new drugs being researched at Murdoch's Centre for Biomolecular Control of Disease, drawing together the results of 12 years' of painstaking research. The project began with the discovery of drugs that were effective against the parasite giardia and is now examining worm parasites which are resistant to current drugs. A number of compounds look promising but they need to be tested to discover whether they are toxic to the parasites' human hosts. Murdoch has some of the best capabilities in the world to keep parasites in culture. The work is funded by GlaxoSmithKline and involves collaboration with scientists from the Chemistry Centre, UWA, the World Health Organisation, and research institutes in Switzerland and Kenya.



## Stars of the academic world

For the seventh time in the past eight years, the independent Good Universities Guide awarded Murdoch its top, five-star rating for student satisfaction. No other university in Australia can match this outstanding record which reflects Murdoch's ethos of "putting students first".

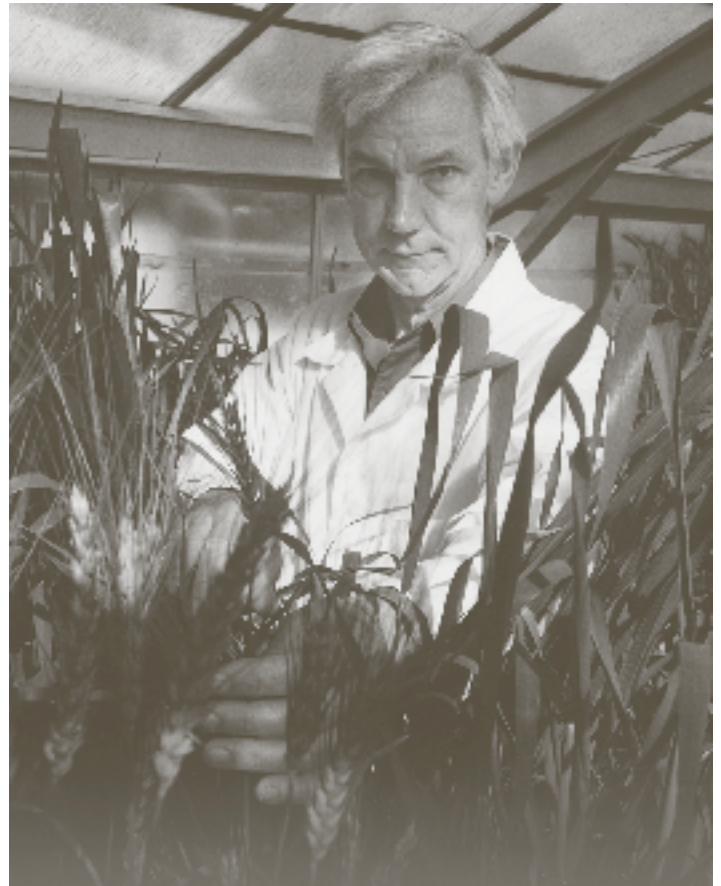
One of the reasons for this success is Murdoch's superb reputation for teaching quality. In 2002, Murdoch University maintained its excellent record in the annual Course Experience Questionnaire (CEQ), run by the Graduate Careers Council of Australia through independent surveys of recently graduated students. This national survey of recent graduates placed Murdoch first or second in Australia on the "Good Teaching" scale in 14 out of 29 subject areas. In 2002, as in every year since the survey began in 1993, we achieved scores higher than the national average on all scales: good teaching; clear goals and standards; appropriate workload; appropriate assessment; generic skills; and overall satisfaction.

## Medical engineering for Murdoch

The Australian Research Centre for Medical Engineering – a training and research facility for the use of engineering and information technology in medicine - has been extended to Murdoch University. It works in the areas of diagnostics, therapeutics and information systems to develop an internationally competitive medical engineering industry in WA. Some of the research activities currently undertaken at ARCE include: mammographic image analysis; microwave heating of tumours; limb shape and volume measuring; and computer-aided diagnosis for radiologists.

## 20 years with the WHO

The World Health Organisation's Collaborating Centre for the Molecular Epidemiology of Parasitic Infections celebrated its 20<sup>th</sup> anniversary in 2002. Work at the centre has improved the health of people around the world, with current research focusing on the epidemiology and control of: surra in SE Asia; hydatid disease in Iran; parasite zoonoses in India and the Pacific; and water-borne protozoan diseases in a number of countries. The centre's research also focuses on the diagnosis and control of giardia, malaria, hookworm, sleeping sickness and the water-borne parasite cryptosporidium.



## Centre for genetic testing

Genetic testing will become accessible for all West Australian agriculture following the establishment of a new WA Centre of Excellence at Murdoch, in association with the State Agricultural Biotechnology Centre (SABC). Opening the Centre for High-throughput Agricultural Genetic Analysis (CHAGA) in August, Premier Geoff Gallop said it would "provide a tremendous boost to Western Australian agricultural biotechnology". It would develop new genetic tests, devise ways to perform tests in large numbers at low costs, and ensure that such tests were available to the agricultural industry and communities that would benefit from them. CHAGA will ensure that WA keeps pace with the developments in molecular genetics that are revolutionising and transforming world agriculture.



### **Beyond genetic analysis**

Researchers at Murdoch are celebrating the arrival of \$700,000 worth of equipment to set up what will be Western Australia's first full proteomics facility, and one of only four in Australia. Based at the State Agricultural Biotechnology Centre (SABC), the researchers will use the equipment to step beyond genetic analysis to investigate the ways a cell responds over time to environmental stresses and other external influences, such as non-genetic diseases. Proteomics is the study of the way proteins in cells, tissues, organs or organisms react to outside stimuli. Researchers from the four public universities in WA will use the facility for a variety of research projects.

### **World-class economist**

Associate Professor Robert Leeson, from the Murdoch Business School, was named in the top 20 of the world's economists on the basis of his journal articles in the ECONLIT database of the American Economic Association.

### **Common sense in the Law**

Murdoch's practical approach to teaching the law was rewarded once again in 2002, when all six awards for the Law Society's "Plain English Drafting Competition" went to Murdoch law students. Murdoch students regularly win this annual competition.

### **Murdoch Commerce student beats country's best**

In an outstanding achievement, Murdoch University's Marcus Marchant, won the National Tertiary Business Person of the Year Award. Together with a group of other Murdoch Business students, Marcus spent six months raising capital, carrying out market research and developing and selling a product - a stainless steel bottle opener called the Party Mate. A fifth-year Law/Commerce student, Marcus will graduate in March 2003.

### **TV Science Stars**

Murdoch's School of Biological Sciences and Biotechnology has worked closely with ABC TV to produce a series of eight 15-minute television programs about molecular genetics. Entitled "Atoms Alive", the series uses magnificent footage of diverse life forms and innovative and spectacular 3D graphics to explore how life may have begun on earth millions of years ago. It describes the evolution of cells, the structure and function of DNA, how it stores and transmits genetic information and how mutations in our DNA can result in genetic diseases and cancer. Much of the filming was carried out within the School, particularly in the research laboratories of the State Agricultural Biotechnology Centre, and many Murdoch University staff and students played cameo roles. The series will be used as a teaching resource in high schools throughout the country, and screened nationally on the ABC. It is also being marketed in the United Kingdom and in the United States.

### **Law teachers meet at Murdoch**

The Murdoch Law School hosted the 2002 ALTA (Australasian Law Teachers' Association) Conference from Sunday 29 September to Wednesday 2 October 2002, with the theme: "Law - What is it good for?" Delegates were asked to consider and address whether and how law can help to meet the significant challenges that currently face our communities - globally, regionally and domestically. Over 124 delegates attended ALTA 2002, from institutions teaching law across Australia, New Zealand and the Pacific, as well as South Africa and the USA.

### **Happy Campers**

Bush Court was buzzing in July as hundreds of visiting students from Australia, East Timor and Papua New Guinea pitched their tents for a week. They were delegates of the eleventh annual Students for Sustainability conference, held for the first time in WA.

Students used the week as an opportunity to exchange ideas and action strategies to keep sustainability issues on the agenda for governments and industry. Despite the torrential rain during the week, the delegates commented on the great atmosphere at Murdoch. Findings from the conference will be submitted to the State Sustainability Strategy.





2002

report on operations

# 2002

## mission and vision

### **Mission**

To extend knowledge, stimulate learning, and promote understanding, for the benefit of the community.

In carrying out this mission Murdoch University aspires to be a world class university which is distinguished for:

### **Excellence in teaching and research**

Research will be conducted to the highest international standards and will address contemporary problems and issues of significance to the community.

Teaching and learning will be informed by research, and by an understanding of how students learn. There will be a diversity of delivery modes to cater for the varied needs and circumstances of the student population.

### **Accessibility**

The University will be a welcoming and accessible environment to students and staff from all backgrounds and will provide them with equality of opportunities to achieve the highest standards.

### **Interdisciplinarity**

Studies will be sufficiently interdisciplinary or multidisciplinary to ensure that graduates can place their major field of knowledge into a broad context.

### **International Outlook**

An international outlook will permeate the University's activities, to strengthen its reputation and prepare its graduates for life and work in an interdependent world.

### **Vision**

The University will be a stimulating and exciting place in which to work and study, and as an institution, will be recognised as a good citizen. In pursuit of its mission the University community will hold to the following values and guiding principles:

- High quality research that addresses contemporary problems and issues of significance to the community;
- Teaching and learning that is underpinned by scholarship;
- Interdisciplinary and multidisciplinary approaches to knowledge and understanding;
- Consultative and responsive management practices that lead to improved performance;
- Integrity, tolerance, and mutual respect in dealing with others; and
- Equality of opportunity, social justice, and environmental responsibility.

### **Objectives**

This mission and vision will be achieved through the following Objectives:

### **Teaching and Learning**

- To offer programs of study of the highest quality which ensure students can achieve their full potential;
- To provide a teaching and learning environment which achieves interpersonal interaction, interdisciplinary studies, flexible delivery and meets the needs of its students;
- To produce graduates noted for their academic qualities, employment skills and a commitment to life-long learning; and
- To provide an environment in which teaching is equally valued with research as a professional commitment of academic staff.

### **Research**

- To maintain a productive research culture with particular areas of national and international strength;
- To attract talented postgraduate research students and to provide high quality research training and supervision; and
- To increase Murdoch's external funding base for research.

### **Accessibility**

- To redress any under-representation of designated equity groups at all levels of the University's student profile; and
- To redress any under-representation of designated equity groups at all levels of the University's staffing profile.

### **Interdisciplinarity**

- To promote the practice of interdisciplinarity and multidisciplinary as an important element of a Murdoch education; and
- To make the fostering of interdisciplinarity and multidisciplinary an integral component of the University's planning, budgeting and staffing activities.

### **International Outlook**

- To integrate an international perspective into the main functions of the University;
- To offer a curriculum which prepares graduates for life and work in an interdependent world;
- To develop international and cross cultural competencies in staff and students; and
- To increase income generated through international activities.

### **Management**

- To recruit and retain an efficient, productive and effective workforce;
- To increase total income and diversify income sources; and
- To manage human, financial and physical resources efficiently and effectively to meet the University's objectives.

### **University Standing**

- To achieve a clear profile and a high reputation for the University in the general community;
- To achieve a clear profile and a high reputation for the University in the secondary school system and TAFE; and
- To achieve a clear profile and a high reputation for Murdoch Alumni amongst employers.

### **Community Service**

- To provide general community service projects which demonstrate commitment to the values of the University and advantage both the University and the community; and
- To promote those aspects of the University's research and professional programs that have relevance to the wider community.



# teaching and learning

Murdoch University continues to be recognised as a provider of high quality teaching and learning.

Our strong commitment to our students and the reputation of the courses we offer is reflected in the high demand for places at Murdoch and in independent surveys such as The Good Universities Guide. The new Bachelor of Chiropractic has been fully subscribed and is in high demand, and new joint degrees such as Biotechnology/Marketing and Biotechnology/Management are extending interdisciplinary study options for students. Within a single degree course, students are encouraged to undertake double major courses and minor courses in disciplines distant from their primary enrolment.

Whilst opportunity to study in a range of disciplines is part of interdisciplinarity, the University recognises that this comprises only a small part. The University staff and students reaffirmed their strong commitment to interdisciplinarity in its broadest sense as a cornerstone of the institution via the ongoing development of an Interdisciplinarity Policy, which embeds interdisciplinary practice in teaching, learning, research and recruitment strategies. The University believes that this attribute is key in graduates if we are to best prepare them to work and live in a changing world and this ethos will position Murdoch well into the future.

Continued work on the development of the Graduate Attributes Project saw the development of a mapping tool by the Teaching and Learning Centre. This will enable academic staff to establish and monitor the development of, and measurement of, generic attributes such as communication and analysis in individual units and whole course structures.

## **Flexible delivery**

A process of redesigning and restructuring our unit offerings has begun to provide our students with more flexible access to teaching materials. While this will assist students who have difficulties attending campus, it will also provide the institution with some administrative savings and the streamlining of previously cumbersome enrolment options. This restructure will include a web-presence for all units and the provision of key lectures on-line via "iLecture". The initiative will provide alternatives for all students and will particularly benefit those who receive lectures via audiotape, as the lecture will now be available online at near real time. During 2002 the first five units were trialed in this new mode and by 2005 approximately 90% of units will be available in this "flexible" format at all Murdoch University campuses. Improvements have also been made in the provision of student services, especially for off-campus students.

## **Unifocus**

January 2002 saw the completion of the first cohort of students from "Unifocus", a bridging program to increase participation in tertiary education by mature age students from low socio-economic backgrounds. Two further cohorts completed the program in September and December, with students coming from throughout the Rockingham and Peel region. More than half of these students have since enrolled in degree programs at Murdoch University.

## **Structured workplace learning**

2002 was also the first year for the Structured Workplace Learning initiative with 20 students having the opportunity to complete a 6 month work placement during their final year of study. The students came from the disciplines of Engineering, IT, Commerce, General Arts, Sociology and Tourism.

Structured Workplace Learning enables students to integrate classroom theory with real experience in the workplace, building their skills and increasing their confidence. More than half of the students from this first cohort have since gained employment either with the company where they did their work placement or through networking opportunities gained during their placement. Structured Workplace Learning complements the offering of Industry Practicum on the Murdoch campus.



## **Primary teacher education**

A Primary Teacher Education program has also been established at the Rockingham campus and demand has significantly exceeded places available in the four-year Bachelor of Education degree for 2003.

## **Credit for short courses**

Throughout 2002, Murdoch University developed several short courses. These were established on a full-fee recovery basis and provide the participant with assured credit for specific courses should they subsequently decide to enroll and are accepted into that course of study. This strategy builds community engagement and also provides alternative entrance pathways for students in a range of areas. Students who are unclear about their commitment to further study can attempt these "bite-sized" courses prior to formal enrolment.

## **Student services**

During 2002 the Office of Student Services completed the restructure of its processes and procedures to make admissions, enrolments, accreditation and orientation as "student-friendly" as possible. These processes have been very well received and now provide a streamlined and effective service for students and staff.



# research report 2002

## Focus

The Murdoch of the future plans to continue to raise its research performance to an even higher level in terms of quality and quantity. Murdoch will become increasingly internationally competitive in its areas of research strength and increasingly nationally competitive in its emerging areas. Moreover, it will be active in identifying potential new areas of research strength and new technology relevant to its focussed areas to gain a fast, niche advantage. Murdoch will build on its current research strengths with a growing focus on partnership research grants and the consequent team research. Murdoch has already exploited this approach ahead of many other Australian universities through its long-standing and new industry, commercial, business, government and community partnerships. There is already an increasing emphasis on recognising our valuable intellectual property and, where appropriate, affecting profit-making technology transfer and commercialisation, to the benefit of both the researchers and the University.

The University strategic plan, currently nearing completion, explicitly commits Murdoch to remaining a research-intensive university and encourages our rich mixture of school leavers and mature aged students to remain a feature of the University. Many of these students become research students of the future.

By focussing on areas of research strength Murdoch is already attracting more local, national and international research students into these areas as well as providing a focus for multiple funding bodies, both national and international. The Federal Government's recently released national research priorities are very much in line with Murdoch's research areas of strength and will encourage researchers to apply for partnership applications.

The long established interdisciplinary ambience of Murdoch is being extended with interdisciplinary collaborations increasing both across disciplines and across Murdoch's campuses. Murdoch recognises that its research effort is no better than the calibre and dedication of its researchers and is therefore directing internal funding to the most active areas as well as undertaking targeted recruiting of researchers to ensure future research success.

## Performance

In 2002 Murdoch University's researchers achieved a new peak in research and development income, a tribute to their effort, calibre and commitment.

In the competitive new government research funding system, which links research funding directly to research performance, Murdoch has maintained its strong position in 2002 as one of Australia's top performing research universities (See Table 1). Government funding for research is primarily allocated through two new performance based funding schemes: the Research Training Scheme (RTS) and the Institutional Grants Scheme (IGS). Together these two schemes embody the key operational and financial performance indicators for university research in Australia by delivering research funding competitively across the entire higher education sector according to universities' relative success in research activities. Success is measured by each university's ability to: (1) generate external research grant and contract income; (2) complete Higher Degree Research (HDR) students; (3) publish; and (4) attract HDR students to enrol. In 2002 Murdoch ranked 12<sup>th</sup> nationally in research performance as measured by the allocation of the RTS and IGS as a proportion of the total Commonwealth operating grant. This strong research performance for a relatively small Australian university (ranking only 30<sup>th</sup> in size) is continued proof of Murdoch's claim to be a research intensive university.

**Table 1. 2002 Block Research Grant Scheme Allocations**

Rank	Institution	Undergraduate EFTSU	Operating Grant (OG) \$000s	Institutional Grants Scheme \$000s	Research Training Scheme \$000s	Block Research Grants (RG) \$000s	RG/OG %
1	The University of Western Australia	9005	\$99,050	\$15,860	\$27,476	\$43,337	43.75%
2	The University of Melbourne	18470	\$215,985	\$29,799	\$52,726	\$82,526	38.21%
3	The University of Adelaide	8725	\$109,656	\$15,289	\$25,216	\$40,505	36.94%
4	The University of New South Wales	15870	\$188,767	\$25,427	\$40,238	\$65,665	34.79%
5	The University of Queensland	19305	\$225,773	\$26,785	\$50,254	\$77,039	34.12%
6	The University of Sydney	21295	\$248,692	\$27,074	\$54,083	\$81,157	32.63%
7	Monash University	21410	\$234,795	\$18,598	\$37,227	\$55,825	23.78%
8	The Flinders University of South Australia	7150	\$78,121	\$7,029	\$10,563	\$17,592	22.52%
9	University of Wollongong	7550	\$82,845	\$5,341	\$12,622	\$17,964	21.68%
10	University of Tasmania	8500	\$94,527	\$6,528	\$13,782	\$20,310	21.49%
11	Macquarie University	9730	\$95,293	\$6,243	\$12,314	\$18,557	19.47%
12	Murdoch University	6045	\$69,344	\$3,961	\$8,419	\$12,380	17.85%
13	The Australian National University	5920	\$210,129	\$16,561	\$20,761	\$37,322	17.76%
14	The University of New England	7225	\$79,379	\$3,841	\$8,563	\$12,404	15.63%
15	The University of Newcastle	11670	\$130,115	\$7,020	\$12,561	\$19,581	15.05%
16	James Cook University	7620	\$85,725	\$3,851	\$8,226	\$12,077	14.09%
17	La Trobe University	14090	\$153,464	\$6,270	\$13,483	\$19,753	12.87%
18	Swinburne University of Technology	5095	\$58,473	\$1,622	\$4,981	\$6,603	11.29%
19	Northern Territory University	2570	\$31,532	\$1,233	\$2,245	\$3,478	11.03%
20	Royal Melbourne Institute of Technology	13560	\$152,805	\$4,234	\$12,196	\$16,430	10.75%
21	Curtin University of Technology	12240	\$138,915	\$4,863	\$9,807	\$14,670	10.56%
22	Griffith University	15920	\$169,514	\$5,672	\$11,910	\$17,582	10.37%
23	University of Technology, Sydney	12655	\$136,117	\$3,342	\$10,171	\$13,513	9.93%
24	University of Canberra	5285	\$53,980	\$1,584	\$2,700	\$4,283	7.94%
25	University of South Australia	13920	\$149,415	\$4,209	\$7,207	\$11,416	7.64%
26	Queensland University of Technology	19145	\$201,754	\$4,874	\$9,534	\$14,408	7.14%
27	Southern Cross University	5195	\$52,856	\$1,238	\$2,399	\$3,637	6.88%
28	Deakin University	13475	\$143,026	\$2,727	\$6,959	\$9,686	6.77%
29	Victoria University of Technology	9320	\$101,770	\$1,542	\$4,736	\$6,278	6.17%
30	University of Western Sydney	17820	\$194,737	\$2,954	\$8,360	\$11,314	5.81%
31	The University of Notre Dame Australia	335	\$3,675	\$105	\$86	\$192	5.22%
32	Central Queensland University	6600	\$72,651	\$902	\$2,818	\$3,721	5.12%
33	University of Ballarat	3080	\$33,481	\$442	\$998	\$1,439	4.30%
34	Edith Cowan University	11085	\$111,525	\$1,327	\$3,405	\$4,732	4.24%
35	Charles Sturt University	9585	\$100,517	\$1,125	\$3,082	\$4,206	4.18%
36	University of Southern Queensland	6970	\$70,227	\$835	\$1,946	\$2,781	3.96%
37	Australian Maritime College	570	\$10,913	\$265	\$166	\$431	3.95%
38	Australian Catholic University	6365	\$66,769	\$445	\$927	\$1,372	2.06%
39	University of the Sunshine Coast	2085	\$21,982	\$119	\$306	\$425	1.93%

Murdoch has reached this strong research position through a process of continuous adaptation and improvement in research and research training. Murdoch's particular competitive advantages that will ensure it continues to extend and improve on this research and research training performance include a high percentage of vigorous research active staff (90%), a high proportion of staff at academic level A and above with PhDs (67%) and a research effort that spans a comprehensive range of fields but with concentration in a select few.

In 2002, Murdoch maintained its six areas of research strength and added an additional emerging area of Interactive Media (See Table 2). These areas provide the focal point for Murdoch's research and research training activities and incorporate researchers who are also prominent in most of the research centres in the University. Together they are responsible for attracting 80% of the University's reportable research income.

These areas of research strength provide substantial interdisciplinary teams of highly productive researchers to address significant research problems from all perspectives.

**Table 2. Identified Areas of Research Strength 2002**

<b>Areas of Research Strength</b>	
Agricultural and Veterinary Biotechnology	Includes the State Agricultural Biotechnology Centre unique in Australia and the only WA Centre recognised in the top 50 national centres of excellence and contains three state centres of excellence programs.
Contemporary Asia	This incorporates the Asia Research Centre (previously an ARC special research centre funded since 1991) with research and consultancy strengths. Areas include environmental science, economics, law, biomedical and veterinary science.
Hydrometallurgy	Mineral Processing and purification. Incorporates the internationally leading Parker CRC in hydrometallurgy-established 1992. Major collaboration and support from mining industry.
Social Change and Social Equity	Research into social and psychological issues following major external change. Positive ageing, social justice and educational consultancies are key foci.
Technologies and Policies for Sustainable Development	Incorporates the UN Centre of Excellence in International Environmental Technology, the Australian CRC for Renewable Energy (ACRE), the Institute for Sustainability and Technology Policy, the State Centre of Excellence for Organic Waste Management.
Terrestrial and Aquatic Ecosystem Management and Restoration	This group working with many aspects of WA's natural resources receives substantial funding from Fish Research and Development Corporation and the Grains Research and Development Corporation.

<b>Emerging Areas of Research Strength</b>	
Bioinformatics and Biostatistics	Incorporates the State Centre of Excellence in Bioinformatics and Biostatistics, the Centre for Clinical Immunology and Biostatistics, the Australian National Genomic Information Service (ANGIS) node and multiple international collaborations.
Intelligent Systems and Software Development for Process Operation Management	Has strong links to the State Centre of Excellence in Intelligent Processes for Operations Management.
Interactive Media Institute	Incorporates the Interactive Television Research Institute (ITRI), the Centre for Research in Culture and Communication (CRCC) and the Centre for Electronic Commerce and Internet Studies (CECIS). Explores consumer response, applied research and social impact associated with the exciting interactive media technologies.

## Collaborative research and development

Murdoch's long-standing and successful linkages with the public and private sectors have facilitated significant levels of business investment in research and development (R&D) and the successful transfer of technology from Murdoch to industry.

Murdoch's linkages in industry focussed research and development were strengthened in 2002 through its success in five national research centres that were funded through the Commonwealth's Cooperative Research Centre (CRC) program. These include the:

- Parker Centre for Hydrometallurgy (supplementary funding);
- Environmental Biotechnology Research Centre (new);
- CRC for Desert Knowledge (new);
- CRC for Sustainable Tourism (second round); and
- CRC for Molecular Plant Breeding (second round).

Notable technology transfer successes in 2002 include the spinout of a joint-venture company, Paragen Pty Ltd, to conduct R&D into the development of a subunit vaccine for the common cat flea and a preliminary agreement with a Japanese multinational corporation to commercialise a novel cryptosporidium diagnostic test.

The establishment of Paragen Pty Ltd (ACN 101 213 405) is an example of active commercialisation by Murdoch and highlights the importance of pre-seed funding. Researchers in the Division of Veterinary and Biomedical Sciences at Murdoch have been working on a novel vaccine against the common cat flea, an external parasite of both cats and dogs. With the strategic investment of nearly \$100,000 of pre-seed University funds, the researchers developed the Novel Flea Vaccine (NFV) project to a point where more funding was required for advancement to the proof-of-concept stage where *in vivo* testing could take place. Consequently, Murdoch sought to secure an ongoing source of funds to assist this project through to commercial fruition. The University located and entered into an agreement with a publicly listed company Imugene Ltd (ACN 009 179 551), to spin out a joint venture company to continue the development of the NFV.

This case demonstrates the need for and judicious use of pre-seed funding to take University spin-offs to the next stage for investor readiness.

The performance indicator target is to establish one subsidiary company every year. In addition to companies in which Murdoch has equity, the University also hosts a cluster of companies that use its facilities and pay a commercial rent for space at the SABC or elsewhere, some of which have been established by former Murdoch researchers. In 2002 these included Biotest Pty Ltd, Grain Biotech Australia Pty Ltd, Saturn Biotech Pty Ltd, Proteomics International Pty Ltd and Ozgene Pty Ltd.

During the year the Premier opened the new state Centre of Excellence, the Centre for High Throughput Agricultural Genetic Analysis (CHAGA) that operates in the State Agricultural Biotechnology Centre, a world class genomics and proteomics facility located at Murdoch. This facility, in conjunction with the state of the art Separation Science Facility in chemical analysis located at the Rockingham campus, provides State university researchers, biotechnology and chemical companies and State departments with the best facility in Western Australia.

In 2002 the Premier also opened the first of only three United Nations funded international global centres working on delivering water purity for third world countries and remote regions (UN-IETC). The State Government made a valuable contribution to the funding of this Centre. The commercial arm, Murdoch Environment (of one of Murdoch's two environmental areas of research strength - Technologies and Policies for Sustainable Development), was initiated and successfully secured early local and overseas contracts.

# regional engagement

Murdoch University, as part of its overall Strategic Planning, has committed to engage with communities in the Rockingham, Peel and Kwinana areas to increase their participation rate in university education and to add value to the local community through relevant research and educational initiatives.

To achieve this strategic goal, the University has set a target for the balance between student load in its regional campuses and its South Street campus. In 2002 there were 450 equivalent full-time students in the regional campuses, which is expected to grow to around 830 equivalent full-time students (approximately 10% of the total student load at the University) by the end of 2007. Particularly important is the move towards courses that serve local needs.

In the period to the end of 2007, Murdoch University will place special emphasis on regional recruitment and on collaboration with industry, the community and the government. To improve regional recruitment, Murdoch will raise awareness of university education and provide alternative pathways for enrolment together with courses that meet student's needs. The target is to improve the enrolment of students from the region from 120 to 500 equivalent full-time students, subject to government funding.

In order to play an active role in supporting the region's development, Murdoch will focus on regional needs and increase its collaborative work with the local community and with industry and government agencies. It will seek joint research projects and consultancies, focused training, industry placements for students and input to community projects.

## **Successes**

Murdoch has already achieved a number of important successes in its Regional Engagement strategy.

Most importantly, it has attracted \$2.5m from the DEST Capital Development Pool for new University buildings on the Peel Campus that is shared with Mandurah Senior College and Challenger TAFE. The new purpose-built facility will strengthen the innovative model for collaborative provision of education that has already been established on the Peel campus.

This achievement was recognised with the 2002 Premier's Award for Excellence in Public Sector Management for Education and Skills Development, which went jointly to Murdoch and its Peel Campus partners - Mandurah Senior College and Challenger TAFE. The award recognises this pioneering partnership and the seamless education provided at the Peel Education and TAFE Campus.

As Western Australia's first co-located and multi-partner campus, it gives secondary students access to TAFE and university units during their final year of high school. Challenger TAFE students also benefit from recognition of their studies by Murdoch University.

In addition, work underway with industry, community and government has already yielded funding to support this initiative, enabling school students in the Rockingham, Peel and Kwinana areas to study a University unit in Year 12, leading to entrance to University study.

Other work with the community is also bearing fruit through "think-tanks" for the community and industry to identify their needs in research and development. Projects underway or proposed as a result of these efforts include a Regional Research Centre to look at environmental, social and economic needs of the region, drawing upon the research expertise of the whole University.

# international outlook

International students comprise nearly 15 per cent of Murdoch's student community but they make a scholastic and cultural contribution to the University that far exceeds their numbers. They play a strong role in student affairs, their different points of view enlighten us and the close study and personal relationships they form with people from other places makes a big contribution towards the national plaudits we win for student satisfaction. Murdoch maintains its high academic standards for all its students and it is well known abroad that a Murdoch degree is one that truly has been earned.

In addition to the international students we attract to Murdoch, we are proud to teach in a number of international locations and to form good partnerships with universities and colleges internationally. Again, the quality of the students and the partnerships in these initiatives, combined with the academic and cultural benefits enjoyed by our travelling teaching staff, are of immense benefit to the University.

In addition, the financial benefits brought to the University and to the West Australian economy by all our international endeavours comprise a significant part of our funding mix.

It is therefore very important to Murdoch that we continue to succeed in recruiting excellent students from abroad, that our students continue to travel, and that our international academic activities continue to maintain the high standards for which they are known.

Given these factors, Murdoch University's strategic intent in 2002 was to embed the notion of internationalisation even more deeply across the University. We have made good progress towards this goal.

The recruitment of international students continues to be an important component of this strategy and the steady growth in their numbers at Murdoch continued in 2002. The success of our internationalisation strategy was also demonstrated by the increased number of Murdoch University students undertaking a semester abroad in 2002.

In addition to more students enjoying the international exchange program, there was a discernible spread in their destinations, with students seeking exchange opportunities not only in the USA but also in Scandinavia, Africa and the United Kingdom. The continued growth in the outward-bound numbers suggests that students now recognise the benefits of an international experience before they graduate. It is also an encouraging trend given the Australian dollar's value in the international marketplace.

The turmoil being experienced in some of our regional markets resulted in reduced activity as issues related to staff safety and security took priority. The effect of this has been a trend towards fewer student numbers recruited to Murdoch from some markets.

Because of the importance Murdoch attaches to the quality of its overseas teaching and partnerships, the University has introduced a new policy to ensure that the high standards we have set are maintained into the future. 2002 saw the full implementation of the Guidelines and Procedures for the Development of Transnational Delivery. The most immediate impact of this process has been a decrease in the number of projects being pursued and a measurable increase in all aspects of the quality of projects that we have taken on board.

The University's expertise and reputation in the areas of Teacher Education, Veterinary and Biomedical Sciences and Interactive Television and Digital Communications has continued to be recognised. Accordingly, we have reaped the benefit of increased applications from North America, Scandinavia and the United Kingdom, as well as countries in Africa, Singapore and Malaysia for full-fee places in these and related courses.

The decision taken in 2001 to streamline the energies and resources of the University to consolidate and to focus on implementing best practice in all aspects of our international work, meant that 2002 was a watershed year for the University's internationalisation strategy and international activity.

Growth rates may have slowed in comparison with previous years, but a strong foundation has been laid for an active, dynamic and sustainable international outlook in future years.

# human resources

## Recruitment

The recruitment of senior staff was a high priority in 2002 as Murdoch prepared for a new era.

Key positions were filled from within the ranks of Murdoch University staff. They were: the Vice Chancellor (Professor John Yovich); the Executive Dean, Social Sciences, Humanities and Education (Professor Gary Martin); the Pro Vice Chancellor Resource Management (Gaye McMath) and the Pro Vice Chancellor Regional Development (Professor Katerya Longley) and Managing Director of Marketing and International (Kerry Hutchinson). These appointments reflect well on the calibre of previous recruiting activities at the University. Other key positions filled during the year included the Executive Dean Science and Engineering (Professor Yianni Attikiouzel).

## Key performance indicators

As part of the University's drive to operate at a more strategic level, Human Resources developed a number of Key Performance Indicators (KPI's), covering the following areas:

- Staff turnover
- Leave liability
- Organisational culture (communication and career progression)
- Equity (women in senior management; numbers of indigenous staff; numbers of staff with disabilities)

## equity

Murdoch University strives to:

- provide equity of access to education and employment for people from identified equity groups and establish support mechanisms to enable staff and students to succeed and reach their highest potential;
- integrate equity and social justice themes into the main functions of the University; and
- achieve management and institutional commitment to equity and social justice.

The University continues to support people from identified equity groups for particular attention for achieving equity in higher education and employment. In May 2001, the Senate resolved that the following three equity groups be the priority areas for University's equity activities in 2002 – 2006: indigenous people, people with disabilities and people from low socio-economic backgrounds. In a situation of scarce resources, preference will be given to the above groups but the University continues to provide support for all other equity groups designated by the Commonwealth government.

The picture of Murdoch's equity students and staff performance against set targets for the past five years is one of mixed success - some groups, particularly people from non-English speaking backgrounds, and people with disabilities have made significant progress while others have made little progress. Indigenous students' access to higher education has increased substantially but their success rate relative to non-indigenous students remains a matter of concern. Our 2003 -04 equity key strategies have taken the declining success rate into account and the review of all strategies aimed at improving success is being undertaken by the Equity Coordinating Committee to evaluate the effectiveness of strategies.

## Women

The Women In Leadership Program established the Academic Staff Women's Promotion Support Group that works towards encouraging women to apply for promotions and to network in preparing successful applications. In 2001 and 2002 there was a significant increase in the number of academic staff women's promotion applications with a 100% and 55% success rate respectively. Academic Level B positions have substantially increased from 49.7% in 1998 to 56% in 2002. In 2002 there was a slight decline in level D positions reflecting an increase in promotions from D to E in the same year, recording a significant increase of women represented in Level E.

These improvements indicate that the Women In Leadership program (WIL) has achieved solid outcomes for individual members of staff, as well as increasing awareness of women's issues on campus. However, without the structured promotions schedule available for academic staff, the greatest challenge for the WIL program is to increase the levels of support available for general staff.





### **WA senior executive women's networking forum**

Murdoch University's Women In Leadership program has established a unique WA Senior Executive Women's Networking Forum where women in higher education network with women in politics, women in business, women in media and women in government agencies to celebrate their achievements that would otherwise go unnoticed. Women use the opportunity to discuss strategies on how to overcome the barriers and how to improve the status of women in the workforce. Guest speakers in 2001 and 2002 included the former Sex Discrimination Commissioner Ms Susan Halliday and the current Sex Discrimination Commissioner Ms Pru Goward.

## **Management and institutional commitment to equity and social justice**

### **Mandatory staff training**

To strengthen the impetus for change and enhance the integration of equity goals there are two mandatory training programs for managers, supervisors and senior executives namely the Equal Opportunity and Diversity Awareness Training and the Aboriginal Cross-Cultural Awareness Training.

- In April and August 2002, the University provided EO and Diversity Awareness Training sessions across all areas and more than 300 staff members participated in training, including senior executives and line managers. The program took a broad based approach to diversity, which included gender, disability, race, age, sexual orientation, religion, disability, marital status and family responsibility. It aimed to raise awareness of the fact that difference and identity are complex concepts, shifting and intersecting rather than absolute.
- *Aboriginal Cross-Cultural Awareness Training* was developed and offered in Semester two, 2002, starting with the Division of Business, Information Technology and Law. In 2003, we aim to cover two Divisions and gradually complete all areas of the University.

### **Online equal opportunity awareness training program for staff**

To complement the mandatory awareness training workshops, in 2002 the Equal Opportunity Section developed an online Equal Opportunity Awareness Training Program for staff. The online module is carefully designed to reach all Murdoch University staff members and give each staff-member the opportunity to complete the module at her/his own pace within the agreed period.

### **A 9-Point plan to progress the process of reconciliation**

The University adopted the 9-Point Plan as one of the mechanisms to encourage Divisions to focus on the University's commitment to issues of indigenous people's equity and social justice in regards to education, culture and employment. The plan is now being integrated into the curriculum through the academic planning process.

### **Liberated learning process**

Murdoch is participating in the Liberated Learning Project, an international research project using voice recognition technology to assist students with special needs in independent learning. Project evaluation revealed that students with disabilities and students from non-English speaking backgrounds found the technology helpful and this could be one way of improving the students' success rate while at the same time assisting Murdoch in achieving inclusivity in teaching and learning.

### **Equity based scholarships**

A number of scholarships were awarded to members of the University's priority equity groups. These include the RSTC Gordon Smith Memorial Scholarship available to students meeting the residential and low income criteria who live in the Rockingham/Kwinana area and the Mick Young Scholarship awarded to students with low-income.

# characteristics of the student population

## Overview

The University has a broad based teaching profile covering eight of the ten major fields of study at undergraduate, postgraduate and research levels in four Divisions.

The proportion of the University's total student load by level of enrolment was research 5.7%, higher degree by coursework 5.5%, other postgraduate 4.6%, undergraduate 83.9%, and non-award 0.4%.

Student load by Division was Business, Information Technology & Law 36.7%, Science 15.3%, Social Sciences, Humanities & Education 39.2% Veterinary & Biomedical Sciences 6.8% and non-Divisional 2.0%.

## Principal Features of the Year

1. Murdoch University appointed Professor John Yovich as its Vice Chancellor. Previously the Executive Dean of the Division of Veterinary and Biomedical Sciences at Murdoch, Professor Yovich has an international reputation as a distinguished veterinary researcher, and with extensive leadership experience in public organisations and universities.
2. Murdoch University has captured a significant share of a Commonwealth discretionary fund for capital projects, being awarded \$2.5 million for a University Learning Centre in the Peel region, co-located with Mandurah Senior College and Challenger TAFE. The Department for Education, Science and Technology, Capital Development Pool is for special capital projects to assist institutions undertaking electronic delivery infrastructure projects to facilitate flexible mode delivery and 'virtual' education services; and/or new campus developments in suburban growth corridors and regional centres. The University Learning Centre will comprise an 80-seat video communications room, three 30-seat flexible teaching rooms, one multipurpose laboratory and offices for technicians, administration and academic staff. Video and electronic communications links will be developed through Rockingham and Kwinana to the Murdoch campus for online access to courses and learning resources.

## Growth Plan

The University aims to consolidate and concentrate on its academic strengths and further develop the Rockingham campus.

## Summary Statistics

1. Students
  - a) Student enrolments by level
  - b) Student enrolments by broad field of education
  - c) Student load by level
  - d) Student load by broad field of education
  - e) Completions by level
  - f) Completions by broad field of education
2. Staff Full Time Equivalent by function
3. Student Equity Statistics by group and broad field of education
  - a) Aboriginal and Torres Strait Islander
  - b) Female
  - c) Rural
  - d) Isolated
  - e) Low Socio-Economic Status
  - f) Non-English Speaking Background
  - g) People with a Disability
  - h) Summary percentage of population
4. Report of Operations - Commonwealth Operating Grant and Load

## Summary Statistics

<b>Student Enrolments</b>					
<b>Level</b>	1998	1999	2000	2001	2002
Higher Degree Research	649	668	705	710	730
Higher Degree Coursework	806	918	1,094	1,049	777
Other Postgraduate	626	564	650	754	926
Undergraduate	9,479	9,855	9,749	9,967	10,423
Non-Award	48	61	99	131	162
<b>Total</b>	<b>11,608</b>	<b>12,066</b>	<b>12,297</b>	<b>12,611</b>	<b>13,018</b>

<b>Broad Field of Education</b>					
	1998	1999	2000	2001	2002
Agriculture, Environmental and Related Studies	664	608	596	557	520
Creative Arts	836	875	932	1,017	1,100
Education	1,047	1,039	1,126	1,338	1,625
Engineering and Related Technologies	190	180	167	182	202
Health	405	404	426	442	532
Information Technology	556	660	737	880	1,059
Management and Commerce	2,621	2,804	2,995	2,820	2,457
Natural and Physical Sciences	1,172	1,261	1,324	1,382	1,407
Non-Award	48	61	99	131	159
Society and Culture	4,069	4,174	3,895	3,862	3,957
<b>Total</b>	<b>11,608</b>	<b>12,066</b>	<b>12,297</b>	<b>12,611</b>	<b>13,018</b>

<b>Student Load (EFTSU)</b>					
<b>Level</b>	1998	1999	2000	2001	2002
Higher Degree Research	452	454	482	502	512
Higher Degree Coursework	541	722	1,022	942	492
Other Postgraduate	306	279	316	340	417
Undergraduate	6,760	7,129	7,115	7,189	7,555
Non-Award	14	22	42	33	36
<b>Total</b>	<b>8,073</b>	<b>8,606</b>	<b>8,977</b>	<b>9,007</b>	<b>9,012</b>

<b>Broad Field of Education</b>					
	1998	1999	2000	2001	2002
Agriculture, Environmental and Related Studies	445	394	404	355	356
Creative Arts	617	653	735	789	849
Education	646	674	705	799	992
Engineering and Related Technologies	128	123	109	127	139
Health	343	334	363	372	446
Information Technology	355	467	513	648	765
Management and Commerce	2,036	2,286	2,535	2,312	1,764
Natural and Physical Sciences	853	938	994	997	1,020
Non-Award	14	22	42	33	35
Society and Culture	2,636	2,716	2,579	2,575	2,646
<b>Total</b>	<b>8,072</b>	<b>8,606</b>	<b>8,977</b>	<b>9,007</b>	<b>9,012</b>

\*: 31<sup>st</sup> August reporting date used for 1997 and beyond, 31<sup>st</sup> March for earlier years

<b>Completions</b>					
<b>Level</b>	1997	1998	1999	2000	2001
Higher Degree Research	63	79	72	62	88
Higher Degree Coursework	146	208	230	380	528
Other Postgraduate	237	217	199	260	296
Undergraduate	1,531	1,773	2,072	2,184	2311
<b>Total</b>	<b>1,977</b>	<b>2,277</b>	<b>2,573</b>	<b>2,886</b>	<b>3,223</b>

<b>Broad Field of Education</b>					
	1997	1998	1999	2000	2001
Agriculture, Environmental and Related Studies	136	159	157	122	188
Creative Arts	182	188	237	234	282
Education	238	230	236	279	255
Engineering and Related Technologies	18	20	30	24	32
Health	78	142	105	74	85
Information Technology	65	89	140	156	200
Management and Commerce	456	632	652	887	1007
Natural and Physical Sciences	178	197	224	321	344
Society and Culture	626	620	792	789	830
<b>Total</b>	<b>1,977</b>	<b>2,277</b>	<b>2,573</b>	<b>2,886</b>	<b>3,223</b>

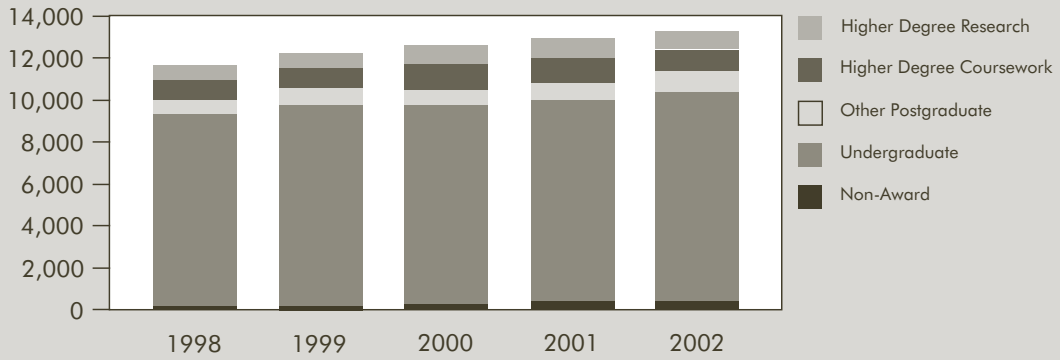
<b>Staff - Full Time Equivalence (FTE)</b>					
<b>Staff Function</b>	1998	1999	2000	2001	2002
Teaching Only	117	92	114	125	120
Research Only	44	52	48	52	62
Teaching & Research	343	339	344	348	357
Other	16	17	23	28	34
Non-Academic	753	777	775	744	777
<b>Total</b>	<b>1,273</b>	<b>1,277</b>	<b>1,304</b>	<b>1,297</b>	<b>1,350</b>

<b>Student Load (EFTSU) per Teaching Staff FTE</b>					
	1998*	1999*	2000*	2001*	2002*
Load/FTE Ratios	16.7	18.5	17.6	17.2	17.9

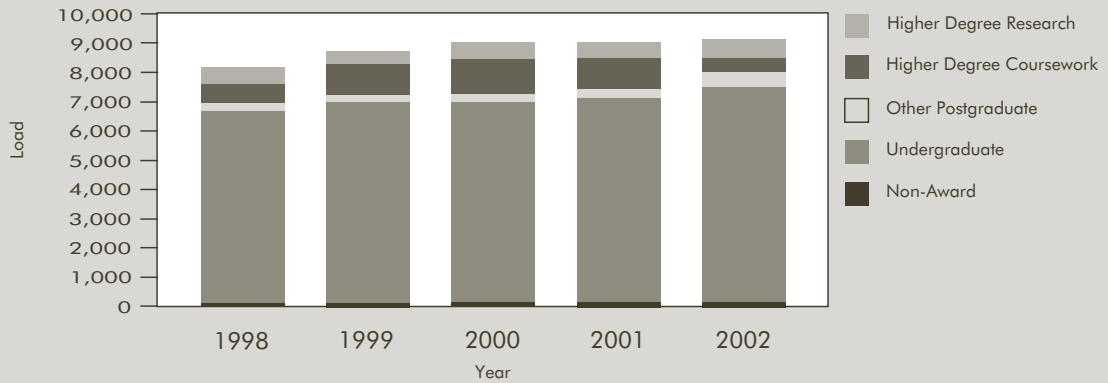
\*Excludes offshore student load

Offshore students to be deducted from load/fte ratio	413	619	939	852	463
--	-----	-----	-----	-----	-----

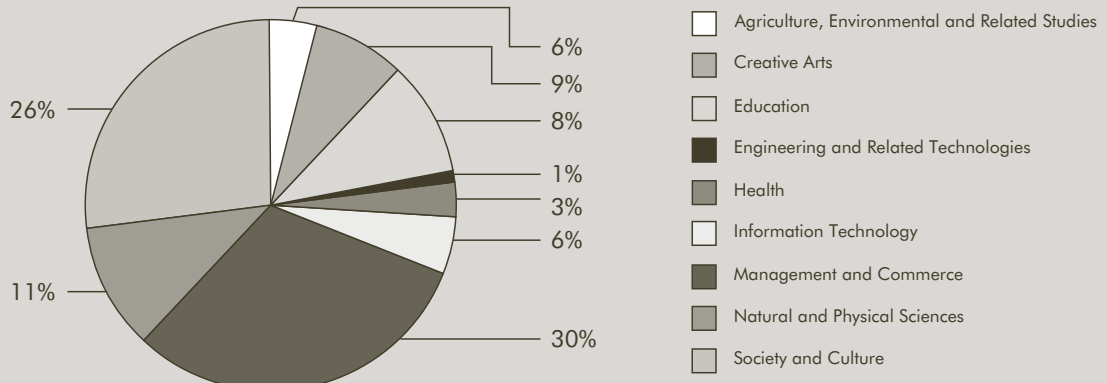
ENROLMENTS BY YEAR & LEVEL

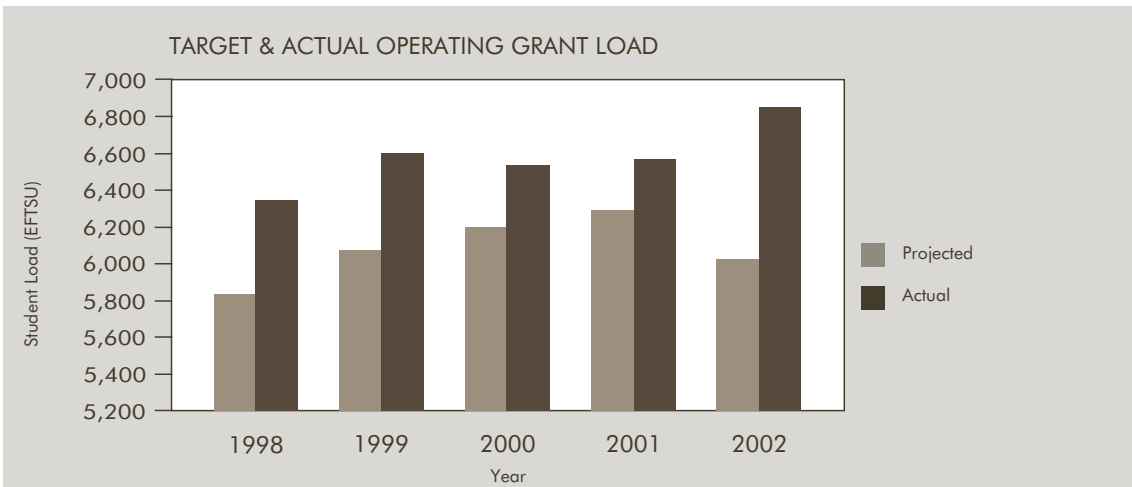
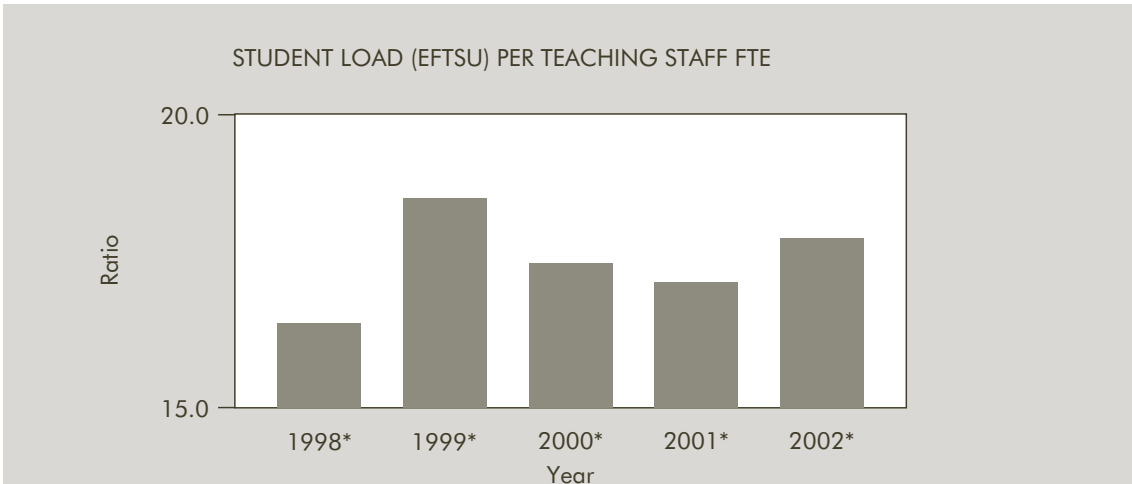
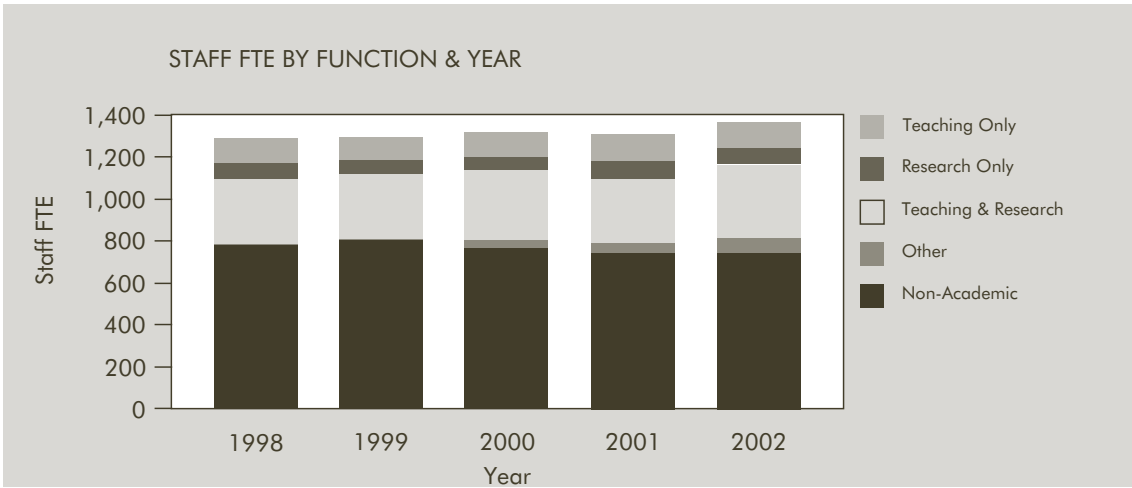


LOAD (EFTSU) BY YEAR & LEVEL

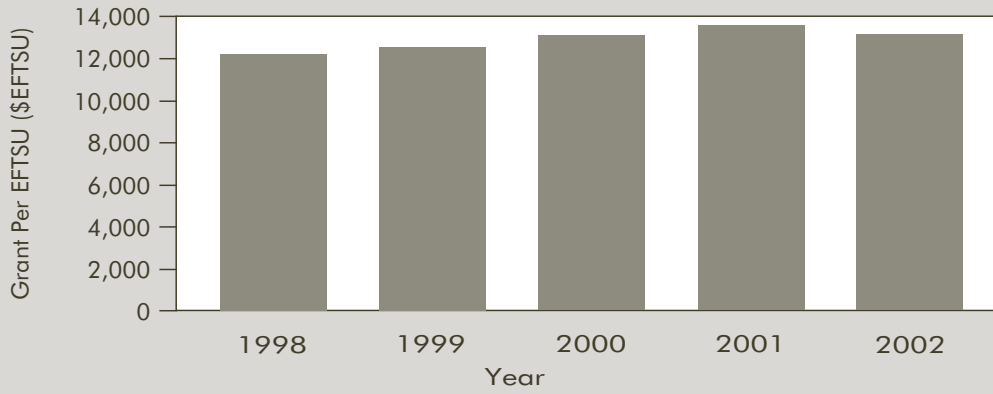


COMPLETIONS BY BROAD FIELD OF EDUCATION - 2001

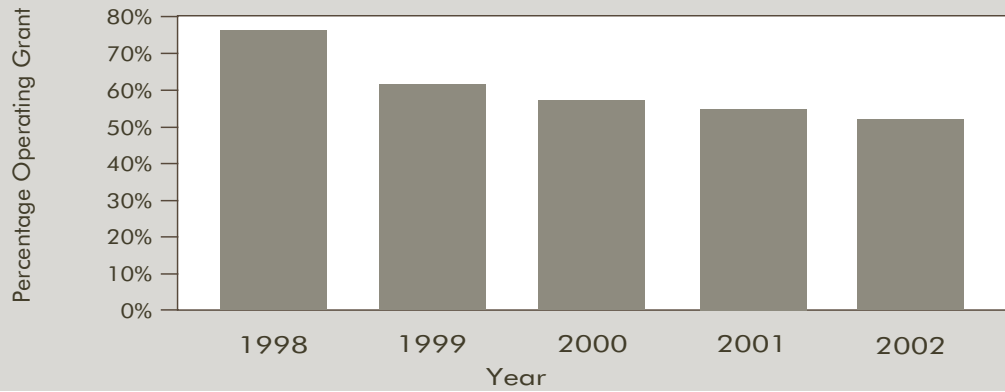




OPERATING GRANT PER OPERATING GRANT LOAD



PERCENTAGE OPERATING GRANT OF TOTAL INCOME



## Student Equity Statistics

<b>Broad Field of Education</b>	1998	1999	2000	2001	2002
<b>Aboriginal &amp; Torres Strait Islander</b>					
Agriculture, Environmental and Related Studies	4	4	4	3	3
Creative Arts	9	8	7	8	7
Education	9	7	8	21	29
Engineering and Related Technologies					1
Health	13	14	14	12	9
Information Technology		1	1	3	6
Management and Commerce	9	6	5	4	2
Natural and Physical Sciences	3	8	6	12	9
Society and Culture	84	89	106	119	132
<b>Total</b>	<b>131</b>	<b>137</b>	<b>151</b>	<b>182</b>	<b>198</b>

<b>Female</b>					
Agriculture, Environmental and Related Studies	365	339	333	295	265
Creative Arts	562	578	618	666	707
Education	841	837	912	1066	1281
Engineering and Related Technologies	30	28	24	32	39
Health	281	288	304	320	379
Information Technology	107	143	153	188	203
Management and Commerce	1342	1429	1509	1446	1277
Natural and Physical Sciences	628	687	731	741	756
Non-Award	22	33	42	74	104
Society and Culture	2591	2713	2562	2580	2613
<b>Total</b>	<b>6769</b>	<b>7075</b>	<b>7188</b>	<b>7408</b>	<b>7624</b>

<b>Rural</b>					
Agriculture, Environmental and Related Studies	65	58	52	52	48
Creative Arts	37	39	36	29	31
Education	97	99	115	138	172
Engineering and Related Technologies	24	26	27	17	16
Health	54	57	62	51	49
Information Technology	38	34	44	35	46
Management and Commerce	75	94	96	88	90
Natural and Physical Sciences	82	96	106	107	80
Non-Award	1	1	4	7	35
Society and Culture	213	206	197	195	226
<b>Total</b>	<b>686</b>	<b>710</b>	<b>739</b>	<b>719</b>	<b>793</b>



	1998	1999	2000	2001	2002
<b>Isolated</b>					
Agriculture, Environmental and Related Studies	60	54	45	44	28
Creative Arts	38	31	27	20	20
Education	133	119	154	149	189
Engineering and Related Technologies	15	14	10	12	8
Health	18	17	18	15	16
Information Technology	33	32	28	26	24
Management and Commerce	35	35	32	28	18
Natural and Physical Sciences	64	65	63	52	47
Non-Award		1	4	1	3
Society and Culture	144	134	132	105	94
<b>Total</b>	<b>540</b>	<b>502</b>	<b>513</b>	<b>452</b>	<b>447</b>

<b>Low Socio-Economic Status</b>					
Agriculture, Environmental and Related Studies	174	139	150	122	125
Creative Arts	133	155	133	148	166
Education	296	303	368	445	527
Engineering and Related Technologies	55	55	56	53	61
Health	85	78	91	83	85
Information Technology	137	157	170	187	224
Management and Commerce	351	380	368	376	335
Natural and Physical Sciences	275	294	296	272	277
Non-Award	7	9	18	26	50
Society and Culture	869	885	854	830	861
<b>Total</b>	<b>2382</b>	<b>2455</b>	<b>2504</b>	<b>2542</b>	<b>2711</b>

<b>Non-English Speaking Background</b>					
Agriculture, Environmental and Related Studies	13	13	12	8	9
Creative Arts	8	9	6	12	9
Education	11	9	6	8	11
Engineering and Related Technologies	5	5	2	9	11
Health	7	5	6	5	5
Information Technology	27	27	27	27	43
Management and Commerce	91	72	61	49	46
Natural and Physical Sciences	34	30	24	21	21
Non-Award	1	2	6	1	2
Society and Culture	52	51	46	40	49
<b>Total</b>	<b>249</b>	<b>223</b>	<b>196</b>	<b>180</b>	<b>206</b>

	1998	1999	2000	2001	2002
<b>People with a Disability</b>					
Agriculture, Environmental and Related Studies	14	15	14	13	11
Creative Arts	30	29	30	39	45
Education	33	32	36	56	69
Engineering and Related Technologies	3	1		5	7
Health	8	8	7	4	8
Information Technology	17	26	26	36	41
Management and Commerce	38	47	59	63	63
Natural and Physical Sciences	34	39	40	60	63
Non-Award	2	1	4	4	1
Society and Culture	199	221	230	280	288
<b>Total</b>	<b>378</b>	<b>419</b>	<b>446</b>	<b>560</b>	<b>596</b>

<b>Summary (Percent of Population)</b>					
Total Student Enrolments	11,608	12,066	12,297	12,611	13,018
Aboriginal & Torres Strait Islander	1.1%	1.1%	1.2%	1.4%	1.5%
Female	58.3%	58.6%	58.5%	58.7%	58.6%
Rural	5.9%	5.9%	6.0%	5.7%	6.1%
Isolated	4.7%	4.2%	4.2%	3.6%	3.4%
Low Socio-Economic Status	20.5%	20.3%	20.4%	20.2%	20.8%
Non-English Speaking Background	2.1%	1.8%	1.6%	1.4%	1.6%
People with a Disability	3.3%	3.5%	3.6%	4.4%	4.6%

## Report of Operations Commonwealth Operating Grant and Load

	1998	1999	2000	2001	2002
<b>Operating Grant Load (EFTSU)</b>					
Target	5,830	6,065	6,190	6,307	6,045
Actual	6,332	6,589	6,526	6,581	6,857
Variance (EFTSU)	502	524	336	274	812
Variance (%)	8.61%	8.64%	5.43%	4.34%	13.43%

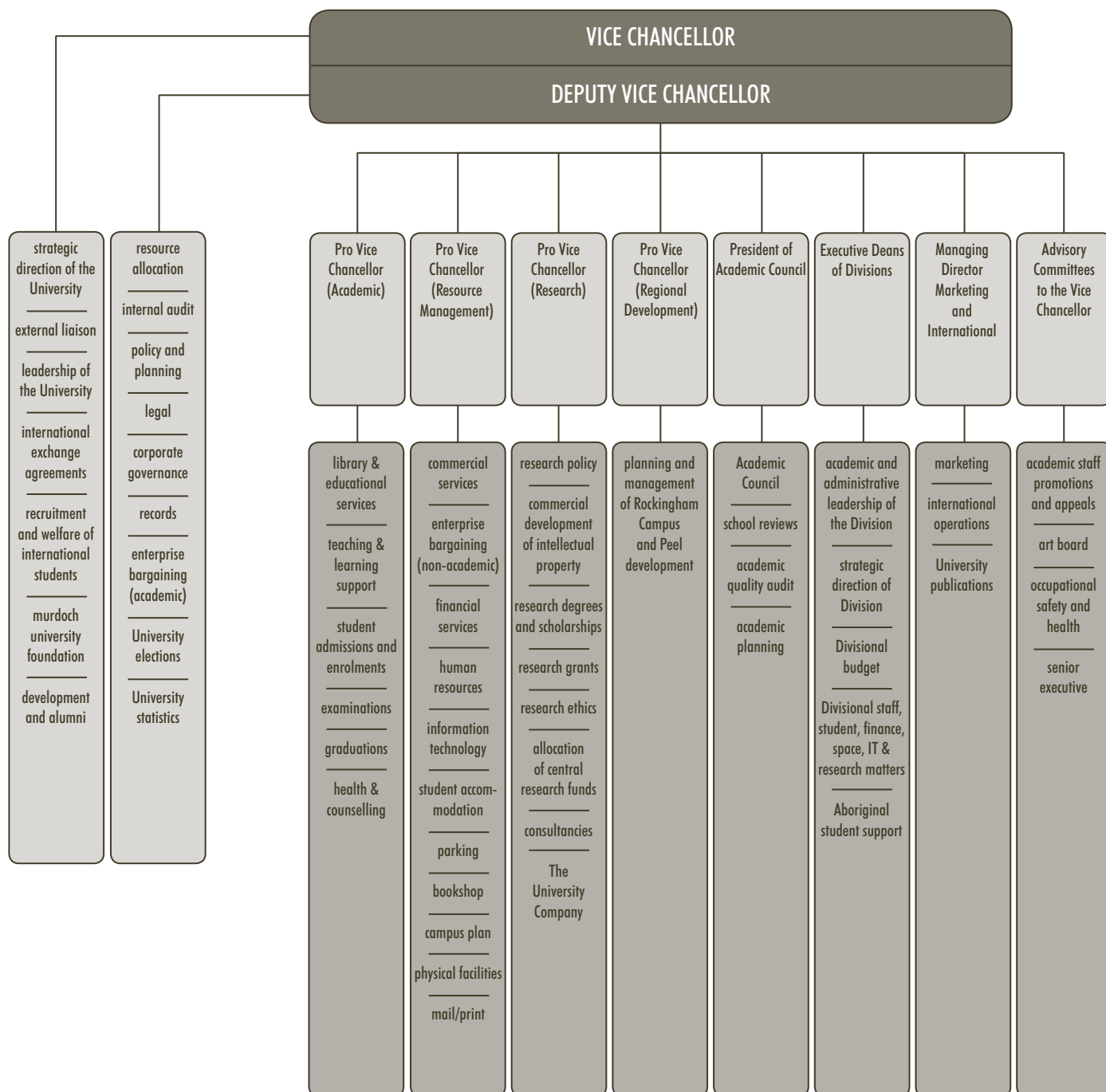
<b>Undergraduate Target Load (EFTSU)</b>					
Target	5,050	5,340	5,530	5,670	5,735
Actual	5,561	5,929	5,883	5,933	6,201
Variance (EFTSU)	511	589	353	263	466
Variance (%)	10.12%	11.03%	6.38%	4.64%	8.12%

<b>Funding Sources</b>					
Operating Grant (\$000)	72,869	79,200	82,051	87,469	91,758
Operating Grant (at 2002 prices) (\$000)	78,714	84,223	85,767	89,497	91,758
Outside Research Grants & Donations (\$000)	15,550	15,500	19,877	20,177	22,963
Operating Grant per EFTSU (at 2002 prices)	12,431	12,782	13,142	13,599	13,382
Total Commonwealth Grant as a Percentage of Total Income	76%	65%	60%	58%	57%

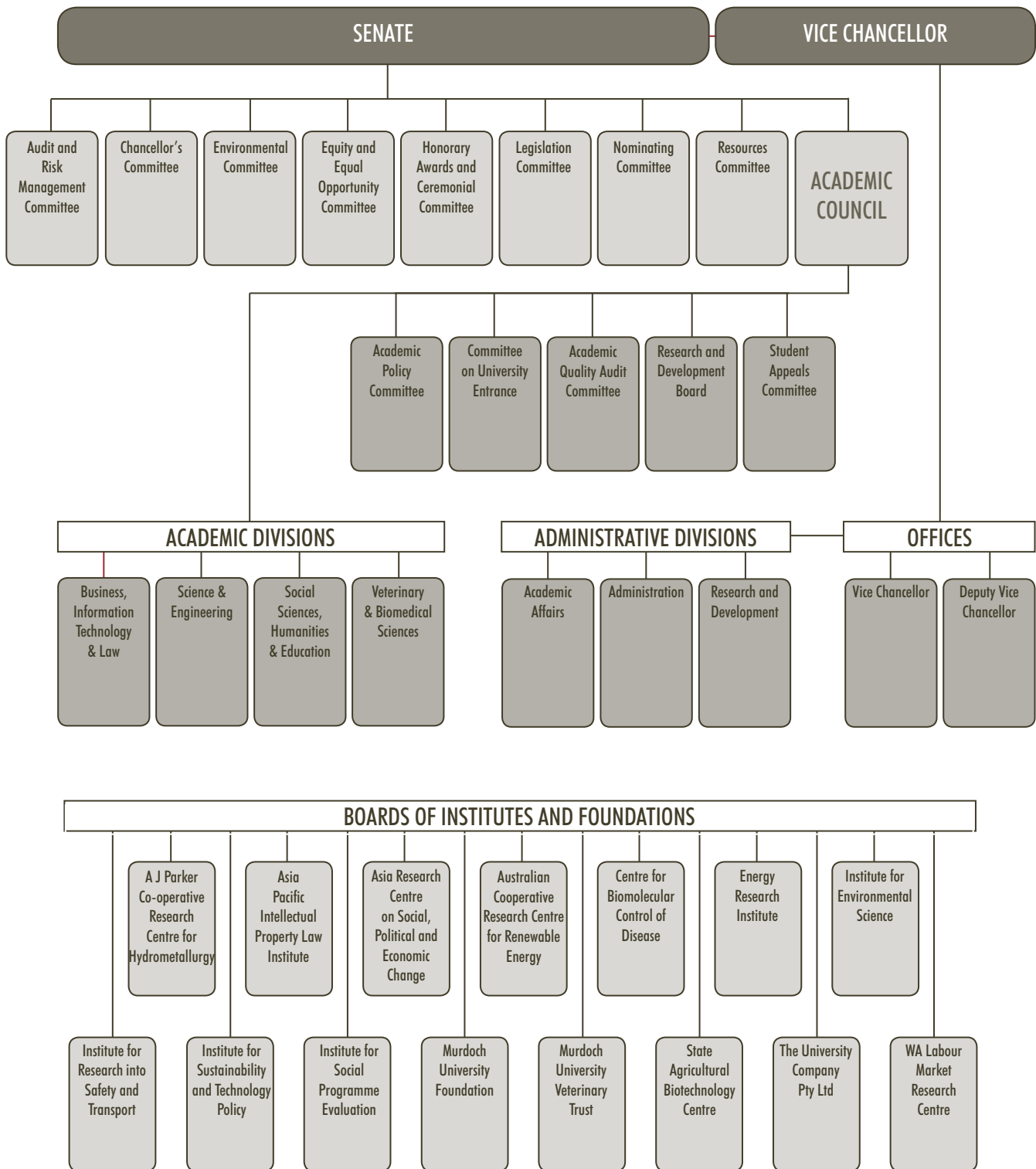
<b>External Research Funding (at 2002 prices)</b>					
Number of Competitive Research Grants	174	175	147	164	230
Value of Competitive Research Grants (\$000's)	6,414	5,709	6,982	6,988	8,617
Value of Non-Competitive Grants (\$000's)	10,383	10,288	13,522	13,336	13,550
Total Research Grants (\$000's)	16,797	15,997	20,503	20,324	22,167
<b>Index</b>	1.080215	1.063420	1.045288	1.023189	1.000000
<b>Cost Adjustment Factor*</b>	1.050122	1.066707	1.085211	1.108650	1.134358

\*: from 2003 to 2005 Triennium Report pre-print release (Appendix A, pg 117)

# functional chart



# organisational chart



# officers of the university

## Visitor

- His Excellency the Governor of Western Australia

## Chancellor

- The Hon. Frederick Michael Chaney, AO, LLB W. Aust. (to 8/7/2002)
- Emeritus Professor Geoffrey Bolton, AO, MA W. Aust., DPhil Oxf., PhD W. Aust., HonDLitt Murd., HonDUniv Murd., FRHistS, FAHA, FASSA (from 9/7/2002)

## Pro-Chancellor

- Emeritus Professor Geoffrey Bolton, AO, MA W. Aust., DPhil Oxf., PhD W. Aust., HonDLitt Murd., HonDUniv Murd., FRHistS, FAHA, FASSA (to 8/7/2002)
- Judge Kate O'Brien, LLB, BJuris W. Aust. (from 9/7/2002)

## Vice Chancellor

- Professor Steven Schwartz, BA Brooklyn, MS Syr., PhD Syr., FASSA (to 28/2/2002)
- Professor Mal Nairn, AM, BVSc Qld., MSc W.Aust., PhD Minn., Hon DSc W.Aust., Hon DSc N.Territory, FAIM, FTSE, MACVSc (1/3/2002 to 30/6/2002)
- Professor John V. Yovich, BSc Murd., BVMS(Hons) Murd., DipLargeAnimalSurg Guelph, MS ColoradoState, PhD ColoradoState, Diplomate ACVS (from 1/7/2002)

## Deputy Vice Chancellor

- Professor Jeffrey Malcolm Gawthorne, BSc PhD W. Aust.

## Pro Vice Chancellor (Academic)

- Professor Roger Charles Lethbridge, BSc PhD Lond. (to 18/5/2002)
- Vacant (from 19/5/2002)

## Pro Vice Chancellor (Research)

- Professor Val Alder, BSc Lond., ARCS Lond., PhD W. Aust.

## Pro Vice Chancellor (Resource Management)

- Mrs Gaye McMath, BCom Melb., MBA Melb., FCPA, MAICD

## University Secretary

- Mr Andrew Bain, BA (Hons) ANU

# senate

## Members Ex Officio

- *The Chancellor*
  - The Hon. Frederick Michael Chaney, AO, LLB W. Aust. (8/7/2002)
  - Emeritus Professor Geoffrey Bolton, AO, MA W. Aust., DPhil Oxf., PhD W. Aust., HonDLitt Murd., HonDUniv Murd., FRHistS, FAHA, FASSA (from 9/7/2002)
- *The Vice-Chancellor*
  - Professor Steven Schwartz, BA Brooklyn, MS Syr., PhD Syr., FASSA (28/2/2002)
  - Professor Mal Nairn, AM, BVSc Qld., MSc W.Aust., PhD Minn., Hon DSc W.Aust., Hon DSc N.Territory, FAIM, FTSE, MACVSc (1/3/2002 to 30/6/2002)
  - Professor John V. Yovich, BSc Murd., BVMS(Hons) Murd., DipLargeAnimalSurg Guelph, MS ColoradoState, PhD ColoradoState, Diplomate ACVS (from 1/7/2002)
- *Nominee of the Director-General, Department of Education*  
Mrs Margaret Banks, AIT W.Aust.I.T., TeachCert STC, GradDipSocSc W.Aust.I.T.
- *The President of the Guild of Students*  
Ms Alisha Ryans-Taylor

## **Members Appointed by the Governor**

- Emeritus Professor Geoffrey Bolton, AO, MA *W. Aust.*, DPhil *Oxf.*, PhD *W. Aust.*, HonDLitt *Murd.*, HonDUniv *Murd.*, FRHistS, FAHA, FASSA (8/7/2002)
- Ms Alison Gaines, BA(Hons) *W. Aust.*, MA *Murd.* (28/6/2005)
- Mr John Gillam, BCom *W.Aust.*, CA, FAIM (from 16/6/2002)
- The Rt Hon. Sir William Heseltine, GCB, GCVO, AC, QSO, BA *W. Aust.*, Hon DUniv *Murd.* (24/7/2003)
- Mr Malcolm Macpherson, BSc *Cant.* (10/9/2003)
- Dr Michael McCall MB, BSc *Adel.*, DPhil *Oxon*, FRACP (18/5/2005)
- Judge Kate O'Brien, LLB, BJuris *W.Aust.* (15/5/2003)

## **Members Elected by the Academic Staff**

- Associate Professor Allan Barton, MSc, PhD, FRACI, FNZIC (9/11/2002)
- Associate Professor Stuart Bradley, BSc *Liv.*, PhD *Liv.* (from 10/11/2002)
- Associate Professor Ken Harrison, BSc *Melb.*, PhD *Monash* (1/8/2004)
- Dr Jim W. Macbeth, BCom *Br.Col.*, MA *Leeds*, PhD *Murd.* (25/9/2003)
- Associate Professor Jen McComb, BSc (Hons) *W. Aust.*, PhD *W. Aust.*, FAIAST, FTSE (28/10/2004)

## **Member Elected by non-academic staff**

- Ms Pat Allen, BA *Durh.* (20/4/2005)

## **Members Elected by and from amongst the students**

- Ms Candice Heedes (31/12/2002)
- Mr Kevin White (31/12/2002)

## **Member Appointed by the Governor upon the Nomination of the Premier**

- Dr Sally Cawley, BA *W. Aust.*, PhD *NSW*, TeachCert *Claremont Tech. C.* (31/5/2004)

## **Member Appointed by the Governor upon the Nomination of the Leader of the Opposition**

- Mr Jeremy Buxton, MA *W. Aust.* (22/8/2003)

## **Members Elected by Convocation**

- Ms Carolyn Jakobsen, BA *Murd.* (from 5/4/2002)
- Ms Helen Shurven (28/2/2002)
- Ms Marion Slany BA (31/12/2002)
- Dr Melanie Strawbridge, BSc, PhD *Murd.* (from 5/4/2002)
- Ms Mara West (30/3/2002)

## **Members Co-opted by the Senate**

- Mr Richard Lester (22/5/2003)
- Mr Robert Pett, BA, MA(Econ) *Qu.* (31/12/2002)
- Prof Malcolm Richmond BSc, BCom *UNSW*, FAIM (3/4/2003)

Except where indicated otherwise, the date in brackets is the date of expiry of the term on Senate.

## AUDITOR **GENERAL**

To the Parliament of Western Australia

### **MURDOCH UNIVERSITY PERFORMANCE INDICATORS FOR THE YEAR ENDED DECEMBER 31, 2002**

#### **Scope**

I have audited the key effectiveness and efficiency performance indicators of Murdoch University for the year ended December 31, 2002 under the provisions of the Financial Administration and Audit Act 1985.

The University Senate is responsible for developing and maintaining proper records and systems for preparing and presenting performance indicators. I have conducted an audit of the key performance indicators in order to express an opinion on them to the Parliament as required by the Act. No opinion is expressed on the output measures of quantity, quality, timeliness and cost.

My audit was performed in accordance with section 79 of the Act to form an opinion based on a reasonable level of assurance. The audit procedures included examining, on a test basis, evidence supporting the amounts and other disclosures in the performance indicators, and assessing the relevance and appropriateness of the performance indicators in assisting users to assess the University's performance. These procedures have been undertaken to form an opinion as to whether, in all material respects, the performance indicators are relevant and appropriate having regard to their purpose and fairly represent the indicated performance.

The audit opinion expressed below has been formed on the above basis.

#### **Audit Opinion**

In my opinion, the key effectiveness and efficiency performance indicators of Murdoch University are relevant and appropriate for assisting users to assess the University's performance and fairly represent the indicated performance for the year ended December 31, 2002.



**D D R PEARSON**  
**AUDITOR GENERAL**  
**May 2, 2003**



# key performance indicators

## Introduction

In 2002, the University continued to implement the Strategic and Quality Improvement Plan 1997-2002. This plan expands and enforces the directions established by the University Senate. The key performance indicators support the two key goals of teaching and learning, and research. Where possible these are reported for five years.

## Murdoch University's Mission

To extend knowledge, stimulate learning and promote understanding for the benefit of the community.

## Summary of Indicators

### Teaching and Learning

#### Effectiveness Indicators

- Students Progress and Completions
  - i) Student Progress Rate
  - ii) Course Completion Rate
- Interdisciplinarity
  - iii) Percentage of students undertaking two majors from different fields of education.
- Quality of Graduates
  - iv) Employment and Study Destination Survey
- Quality of Teaching
  - v) Perceived Quality of Teaching - Course Experience Questionnaire
  - vi) Student Evaluation of Teaching
- Efficiency Indicators
  - vii) Ratios of total operating and teaching related expenditure to total load (EFTSU)
  - viii) Ratio of EFTSU per teaching staff FTE, successful EFTSU per teaching staff FTE, and the percentage successful load of total load.

### Research

#### Effectiveness Indicators

- Research Funding
  - ix) Research Funding: A National Comparison of Research
- Research Income
  - x) Income per 10 Research Staff FTE
- Higher Degree by Research Completion
  - xi) Higher Degree by Research Completions per 10 Research Staff FTE

#### Efficiency Indicators

- Research Publications
  - xii) Number of publications per 10 Research Staff FTE
- Student progress and completion
  - xiii) Time to completion of Higher Degree by Research Students

## Excellence in Teaching and Learning

### Goal:

To achieve excellence in teaching and learning which is formed through research and by an understanding of how and why students learn.

### Objectives

- To offer courses of the highest quality which ensure that students can achieve their full potential
- To provide a teaching and learning environment which achieves interpersonal interaction, interdisciplinary studies, flexible delivery and meets the needs of its students
- To produce graduates noted for their academic qualities, employment skills and a commitment to life-long learning
- To provide an environment in which teaching is valued as a professional commitment of academic staff as demonstrated by the students' perceptions of the quality of the teaching

## Desired Outcomes

- For students to achieve their full potential by successfully completing their units of study
- For students to achieve their full potential by successfully completing their course
- To achieve a minimum of 20% of students undertaking two majors of study from different fields of education
- To produce graduates who demonstrate their commitment to life long learning by undertaking further study or gain employment
- To maintain student satisfaction with the quality of teaching, as measured by the Course Evaluation Questionnaire, above the national mean
- To maintain the rate of student satisfaction with the quality of teaching above 80%, as measured by unit surveys.

## Effectiveness Indicators

The University presents six performance indicators to demonstrate how effectively it is working to achieve its teaching and learning goals, objectives and desired outcomes. The indicators demonstrate the students' progress and completions rates, the quality of graduates, the quality of teaching and the success towards promoting interdisciplinary study.

## Student Progress and Completions

The University's objective is to offer courses of the highest quality which ensure that students can achieve their full potential. There are two desired outcomes. First is for students to achieve their full potential by successfully completing their units of study and the second is for students to achieve their full potential by successfully completing their course(s). The indicators of students achievement are the Student Progress Rate and the Program Completion Rate.

### i) Student Progress Rate

This is an indicator of student achievement. It compares the proportion of student load achieving a passing result to the total enrolled load. Load is generated by the number of credit points in which a student is enrolled as a proportion of twenty four points. Twenty four points represents a full-time work load for one year. The load taken by Higher Degrees by Research students has been excluded from the calculation, because it is not finally assessed on a semester or annual basis.

The data for this indicator are extracted from the Murdoch University submissions for Commonwealth Student Data Collections.

The results shown are the percentage of the enrolled load that successfully completed. The reverse of the result includes the percentage that failed or withdrew after the Census Date without academic penalty. The Census Date is used for Federal Government statistical and other collection purposes.

Broad Field of Education	1998	1999	2000	2001	2002
Agriculture, Environmental and Related Studies	86%	84%	85%	85%	81%
Creative Arts	85%	87%	85%	88%	87%
Education	84%	86%	89%	88%	89%
Engineering and Related Technologies	73%	78%	76%	77%	81%
Health	96%	97%	97%	97%	82%
Information Technology	75%	80%	80%	81%	74%
Management and Commerce	86%	88%	87%	87%	84%
Natural and Physical Sciences	82%	84%	84%	83%	82%
Society and Culture	85%	94%	83%	84%	84%
Non-Award	91%	85%	91%	89%	93%
Total	85%	86%	85%	86%	84%

### ii) Course Completion Rate

This is an indicator of student achievement. This indicator measures the rate at which Murdoch students successfully complete their course. The data for this indicator are extracted from the Commonwealth Student Data Collections.

The data consist of full time internal students undertaking a three year bachelor degree and are presented by broad field of education. Veterinary Studies is in accordance with the new Standard Classification included in Health, however since 1997 it has been treated as a five year course. Education is no longer offered as a three year degree.

<b>Broad Field of Education</b>	<b>1997 - 1998</b>	<b>1998 - 1999</b>	<b>1999 - 2000</b>	<b>2000 - 2001</b>	<b>2001 - 2002</b>
Agriculture, Environmental and Related Studies	0.78	0.81	0.70	0.83	0.79
Creative Arts	0.73	0.73	0.77	0.73	0.75
Education	0.87				
Engineering and Related Technologies	0.69	0.60	0.67	0.68	0.92
Information Technology	0.70	0.64	0.74	0.73	0.81
Management and Commerce	0.77	0.76	0.77	0.79	0.70
Natural and Physical Sciences	0.71	0.69	0.72	0.73	0.73
Society and Culture	0.71	0.67	0.60	0.64	0.74
<b>Total</b>	<b>0.72</b>	<b>0.72</b>	<b>0.72</b>	<b>0.73</b>	<b>0.74</b>

### **Interdisciplinarity**

From its inception in 1974 Murdoch University has been committed to interdisciplinarity. Interdisciplinarity exposes students at the unit of study level to themes and issues not directly allied to the narrow confines of a single discipline. In 2002 that fundamental guiding principle remained strong. The University has the objective to provide a teaching and learning environment which achieves interpersonal interaction, interdisciplinary studies, flexible delivery and meets the needs of its students. The University has courses, majors and units which are interdisciplinary in their content. Undergraduate degree regulations are structured in a way which enables students to undertake more than one major, thus enabling students to formally choose an interdisciplinary undergraduate education. A broad measure of the success of the interdisciplinarity is the increasing proportion of students choosing to undertake more than one major. The specific desired outcome is to achieve a minimum of 20% of students undertaking two majors from different fields of education.

#### **iii) Percentage of students undertaking two majors from different fields of education.**

This indicator measures the proportion of students undertaking two majors with different field of education codes. It demonstrates the number of students undertaking interdisciplinary studies at the level of major relative to the total number of award students. The data are taken from the Commonwealth Student Data Collection and supplemented with second major information from the University's student records system.

Veterinary Studies is a professional training course which excludes students from enrolling in a second course or major. Biomedical Science is now classified as a Natural and Physical Science rather than Health.

<b>Broad Field of Education</b>	<b>1998</b>	<b>1999</b>	<b>2000</b>	<b>2001</b>	<b>2002</b>
Agriculture, Environmental and Related Studies	8%	8%	11%	14%	14%
Creative Arts	16%	17%	15%	15%	13%
Education	13%	12%	13%	14%	14%
Engineering and Related Technologies	11%	11%	10%	10%	6%
Information Technology	20%	17%	14%	14%	15%
Management and Commerce	6%	6%	6%	6%	12%
Natural and Physical Sciences	12%	14%	16%	14%	11%
Society and Culture	20%	20%	20%	19%	17%
Health	0%	0%	0%	0%	0%
<b>Total</b>	<b>14%</b>	<b>13%</b>	<b>14%</b>	<b>13%</b>	<b>13%</b>

### **Quality of Graduates**

The University's objective to produce graduates who are valued for their academic qualities, employment related skills and commitment to life-long learning is well demonstrated by their ability to gain employment or be accepted into further study. The University's desired outcome is to produce graduates who demonstrate their commitment to life long learning by undertaking further study or gaining employment.

#### **iv) Employment and Study Destination Survey**

The University participates in the annual national Graduate Destination Survey conducted by the Graduate Careers Council of Australia (GCCA). The survey is administered to all graduates after the completion of their course. The University supplemented the 2000 further study survey results with internal information from the student records system.

The inclusion of National and state level comparison in 2002 has meant that the data for this indicator is now sourced from a different GCCA survey result table. The indicator has been recalculated for the past five years according to the definition and population of the employment and study status of this table.

The survey asks students about their employment and study status as at 30 April the year succeeding their course completion. Mid year graduates have the census date of 30 October.

This measures the successful outcomes in terms of a graduate being employed and/or studying. Graduates may be both working and studying. The percentage of graduates in their work mode of choice are those who are either employed full or part time and not seeking the alternate mode compared with graduates who want or have paid work at the time of the survey. National, State and University data is provided for the five most recent years.

		Full Time Employment	Part Time Employment	Unavailable for Employment	Unemployed	Total % in Employment	% Graduates in their work mode of choice
1997	Murdoch	48.1%	16.6%	3.4%	9.3%	64.7%	75.2%
	WA	51.8%	14.8%	3.7%	7.6%	66.6%	79.8%
	National	57.5%	13.8%	4.0%	6.5%	71.3%	82.9%
1998	Murdoch	56.3%	17.3%	4.2%	9.3%	73.6%	76.5%
	WA	53.7%	15.0%	4.0%	7.5%	68.7%	80.1%
	National	56.4%	13.4%	4.9%	5.9%	69.8%	83.8%
1999	Murdoch	52.9%	15.7%	4.8%	8.9%	68.6%	77.9%
	WA	53.6%	13.3%	4.3%	6.4%	66.9%	82.3%
	National	58.4%	12.0%	4.7%	4.9%	70.4%	86.2%
2000	Murdoch	55.0%	15.3%	4.1%	8.2%	70.3%	79.2%
	WA	56.7%	15.1%	2.8%	6.0%	71.8%	83.5%
	National	58.9%	12.2%	3.3%	5.2%	71.1%	85.8%
2001	Murdoch	44.7%	15.9%	6.1%	9.4%	60.6%	73.4%
	WA	50.8%	12.4%	5.1%	7.5%	63.2%	80.2%
	National	55.6%	12.9%	4.2%	5.9%	68.5%	83.6%

		Full Time Study	Part time study	Not Studying	Total % Studying	Number of Respondents	Number Surveyed	Response Rate
1997	Murdoch	22.6%	10.3%	67.1%	32.9%	1,082	1,840	58.8%
	WA	22.1%				8,417	14,051	59.9%
	National	18.1%				96,758	148,629	65.1%
1998	Murdoch	12.9%	11.2%	75.9%	24.1%	1,327	1,998	66.4%
	WA	19.7%				8,760	14,445	60.6%
	National	19.4%				95,022	150,829	63.0%
1999	Murdoch	17.8%	11.1%	71.1%	28.9%	1,283	2,212	58.0%
	WA	22.4%				8,217	14,832	55.4%
	National	20.0%				90,056	155,269	58.0%
2000	Murdoch	17.6%	11.9%	70.5%	29.5%	1,332	2,391	55.7%
	WA	19.4%				7,849	14,950	52.5%
	National	20.4%				90,410	157,235	57.5%
2001	Murdoch	23.8%	12.4%	63.8%	36.2%	1,292	2,345	55.1%
	WA	24.3%				8,238	15,344	53.7%
	National	21.3%				95,626	172,613	55.4%

## Quality of Teaching

The University's objective to provide an environment in which teaching is valued as a professional commitment of academic staff is demonstrated by the students' perceptions of the quality of the teaching. This is measured by the students' responses to the Course Experience Questionnaire and the student's evaluation of units routinely conducted by the University. The University desired outcomes are to maintain student satisfaction with the quality of teaching, as measured by the Course Evaluation Questionnaire, above the national mean and to maintain student satisfaction, as measured by the unit surveys, of above 80%.

### v) Perceived Quality of Teaching - Course Experience Questionnaire

The University participates in the annual national Course Evaluation Questionnaire conducted by the Graduate Careers Council of Australia (GCCA). The survey is administered to all graduates six months after the completion of their course with the year noted being the year the results were published.

The survey asks graduates to rate their perceptions to twenty five questions which cover five broad aspects of their recently completed course. These aspects are: the quality of teaching, the clarity of goals and standards, the appropriateness of assessment, the level of workload, and the enhancement of their generic skills. Students are also asked to rate their overall level of satisfaction with the course. The scale is a five-point scale, with 5 being strongly agree and 1 being strongly disagree. Students who record scores of 3, 4 and 5 are defined as broadly agreeing with the statements. National, State and University data are given for the most recent four years.

The inclusion of National and state level comparison in 2002 has meant that the data for this indicator is now sourced from a different GCCA survey result table. The indicator has been recalculated for the past five years according to the definition and population of the employment and study status of this table.

	1998			1999			2000			2001		
	Percent Broadly Agree			Percent Broadly Agree			Percent Broadly Agree			Percent Broadly Agree		
CEQ Scale	Murdoch	WA	National	Murdoch	WA	National	Murdoch	WA	National	Murdoch	WA	National
Good Teaching	84.0	79.2	78.4	84.7	80.6	78.5	84.8	80.3	78.4	86.8	82.7	80.1
Clear Goals & Standards	84.8	83.1	82.1	86.1	83.8	82.1	87.0	84.0	82.2	86.4	83.8	81.4
Appropriate Assessment	87.2	85.0	86.4	88.9	84.8	86.4	88.8	85.1	85.9	87.9	85.0	84.7
Appropriate Workload	71.2	70.9	73.0	73.5	71.9	73.3	76.2	72.0	73.5	77.0	74.2	74.6
Generic Skills	89.0	88.0	86.4	87.3	87.5	86.4	88.3	87.6	86.5	90.2	89.7	87.5
Overall Satisfaction	91.2	89.3	89.2	92.1	90.6	89.5	93.0	89.5	89.4	93.3	90.9	89.4
Number of Respondents	1,327	8,874	95,531	1,284	8,392	90,585	1,332	8,049	90,889	1,296	8,309	95,959
Estimated response rate	66%	62%	63%	58%	55%	58%	56%	53%	57%	55%	54%	55%

#### vi) Student Evaluation of Teaching

The University conducted student evaluation surveys on each unit each time it was run until Semester 2 2001, provided there were more than ten enrolled students. From Semester 2 2001 the surveys are conducted on 50% of the units offered each semester, with the policy regarding the minimum number of students remaining the same. The survey asks students to rate their perception to a series of statements which cover the three aspects of the unit of study; quality of teaching, availability of resources to support teaching and value of units. Students are also asked to rate their perception of overall satisfaction with the quality of the unit.

This indicator is based on the students' response to the statement: "Overall I was satisfied with the quality of the unit" and is expressed as a percentage of the responses. The University continues to achieve its target for the quality of teaching.

	1998	1999	2000	2001	2002
Agreed or Strongly Agreed	83%	84%	86%	85%	86%
Response rate	55%	58%	60%	62%	60%

#### Efficiency Indicators

The University presents data and two indicators which demonstrate the efficiency with which Murdoch is achieving its teaching and learning outputs. The ratios of total operating and teaching related expenditure to total load (EFTSU), successful load to teaching staff and the percent successful load of total load provide information regarding the resources required to produce successful outputs.

#### vii) Ratios of total operating and teaching related expenditure to total load (EFTSU)

This indicator includes teaching and research training load and the expenditure associated with that load. Comparable figures are provided for five years. An EFTSU is an effective full-time student unit. This unit of measure allows for the fact that not all students are studying full-time at the University. Total expenditure includes general research expenditure and has been included because of the important role research plays in informing teaching. Teaching expenditure relates to the provision of teaching and related services to all students and has been identified as total University expenditure less research grant expenditure. Total load is a sum of all units being undertaken by students.

The average expenditure per EFTSU is dependent on and will vary according to the discipline mix taught by the university. Clinical sciences and laboratory based sciences are more expensive to teach than classroom based disciplines.

The data for this indicator are extracted from the Commonwealth Student Collections and the University's Financial Records. The total load figure is as at 31 August. The 2001 total load figure published in the 2001 Annual Report has been revised to ensure consistency across years. The comparative expenditure figures have been indexed to 2002 prices.

	1998	1999	2000	2001	2002
Total Load (EFTSU)	8,073	8,606	8,977	9,007	9,012
Total Operating Expenditure (\$000)	126,707	130,837	134,652	151,862	154,454
Teaching Related Expenditure (\$000)	110,316	113,303	117,353	133,572	133,190
Total Expenditure/Total Load	\$15,695	\$15,203	\$15,000	\$16,860	\$17,138
Teaching Related Expenditure/Total Load	\$13,665	\$13,166	\$13,073	\$14,830	\$14,779

**viii) Ratios of EFTSU per teaching staff FTE, successful EFTSU per teaching staff FTE, and the percentage successful load of total load.**

A Staff FTE is an equivalent full time staff. EFTSU is an effective full-time student unit. These units of measure allow for the fact that not all staff and students are full-time at the University. Academic Staff may be classified as 'Teaching Only', 'Teaching and Research', 'Research Only' or 'Other'. The Commonwealth defines these measures and classifications for the universities. Only academic staff associated with Academic Organisational Units and designated as 'Teaching Only' or 'Teaching and Research' have been included in this indicator. Successful load is the sum of all load with a passing result. Total load is a sum of load being undertaken by coursework students. The research load has been excluded from this calculation.

The data for this indicator are extracted from the Commonwealth Student and Staff Data Collections. The load figures are as at 31 August.

	1998	1999	2000	2001	2002
Total Non-Research Load (EFTSU)	7,599	8,128	8,473	8,559	8,501
Successful Load (EFTSU)	6,443	6,978	7,222	7,361	7,125
Teaching Staff (FTE)	442	417	442	459	461
Total Load/Teaching Staff	17.2	19.5	19.2	18.6	18.4
Successful Load/Teaching Staff	14.6	16.7	16.3	16.0	15.5
Percent Successful Load of Total Load	85%	86%	85%	86%	84%

## Excellence in Research

### Goal:

Research will be conducted to the highest international standards and will address contemporary problems and issues of significance to the community.

### Objectives:

- To maintain a productive research culture with particular areas of national and international strength
- To increase Murdoch's external funding base for research
- To increase the number of talented postgraduate research students and to provide high quality research training and supervision

### Desired Outcomes:

- To maintain a productive research culture as measured by the Research Funding allocation and rank
- To increase research income per 10 research staff FTE
- To increase the number of postgraduate research student completions per 10 Staff FTE

## Effectiveness Indicators

The University presents three performance indicators to demonstrate how well it is working to achieve its research objectives. The objective to maintain a productive research culture with particular areas of national and international strength is supported by the desired outcome to maintain a productive research culture as measured by the Research Funding allocation and rank. This indicator demonstrates the University's national standing in terms of research productivity. Research income is an indicator of a productive research culture and the ability of the University to increase its external funding base for research. The desired outcome is to increase its research income per 10 research staff FTE which is a measure of results over time. The objective to increase the number of talented postgraduate research students and to provide high quality research training and supervision is supported by the desired outcome to increase the number of postgraduate research students completing within time. The actual number of research students is provided in the summary statistics section of the Annual Report.

## ix) Research Funding: A National Comparison

Research Funding is a combination of the Research Training Scheme (RTS) and Institutional Grants Scheme (IGS) funds provided by the Commonwealth. It is a key indicator of research performance because this funding is allocated according to the comparative research performance of all Commonwealth funded universities. Each funding scheme has its own composite index of research outputs and inputs. The components and combined indices are higher degrees by research completions (33%) and student load (10%), research income (47%), and publications (10%). The figures are published in the DEST annual Higher Education triennial reports. These are weighted and averaged, except for student load, over the two most recent years for which data are available. Student load is the figure for the most recent year.

The Research Funding Indicator is tabulated and all publicly funded Australian universities ranked according to their share of the total Research Training Scheme and Institutional Grants Scheme funds. This is a new funding scheme and changes in funding are capped at 5% for the first three years, however universities denoted with an (R) are receiving a "top-up" from the Regional Protection Fund. Universities denoted with an (M) have medical schools and supporting departments. These universities have had the advantage of enhanced access to National Competitive Grants schemes such as the National Health and Medical Research Council. Western Australian universities are bolded. Murdoch University does not have a medical school and ranks 10 among other Universities in that category. In the overall ranking Murdoch advanced to 20.

### Research Funding Allocations 2002 – 2003

	Rank 2001	Rank 2002	Rank 2003	RTS & IGS \$000 Allocation 2003	RTS & IGS % Allocation 2003
The University of Sydney (M)	2	2	1	83,468	10.369%
The University of Melbourne (M)	1	1	2	82,200	10.212%
The University of Queensland (M)	3	3	3	79,558	9.883%
The University of New South Wales (M)	4	4	4	67,044	8.329%
Monash University (M)	5	5	5	56,243	6.987%
The University of Western Australia (M)	6	6	6	43,601	5.417%
The University of Adelaide (M)	7	7	7	42,380	5.265%
The Australian National University	8	8	8	38,867	4.828%
University of Tasmania (M)	11	9	9	21,815	2.710%
La Trobe University (R)	10	10	10	19,840	2.465%
The University of Newcastle (R) (M)	9	11	11	19,495	2.422%
University of Wollongong	14	13	12	18,531	2.302%
Macquarie University	12	12	13	18,473	2.295%
The Flinders University of South Australia (M)	13	14	14	18,277	2.271%
Griffith University	15	15	15	18,044	2.242%
Royal Melbourne Institute of Technology	16	16	16	16,657	2.069%
Curtin University of Technology	19	17	17	15,757	1.958%
Queensland University of Technology	17	18	18	14,342	1.782%
University of Technology, Sydney	18	19	19	13,689	1.701%
Murdoch University	21	21	20	12,824	1.593%
The University of New England	22	20	21	12,560	1.560%
James Cook University (R) (M)	20	22	22	12,021	1.493%
University of South Australia	23	23	23	11,677	1.451%
University of Western Sydney	24	24	24	11,474	1.425%
Deakin University	25	25	25	10,404	1.292%
Victoria University of Technology	27	27	26	6,743	0.838%
Swinburne University of Technology	26	26	27	6,688	0.831%
Edith Cowan University	28	28	28	5,082	0.631%
University of Canberra	29	29	29	4,400	0.547%
Charles Sturt University (R)	30	30	30	4,268	0.530%
Southern Cross University (R)	31	32	31	3,817	0.474%
Central Queensland University	32	31	32	3,767	0.468%
Northern Territory University	33	33	33	3,462	0.430%
University of Southern Queensland	34	34	34	2,987	0.371%
University of Ballarat	35	35	35	1,508	0.187%
Australian Catholic University	36	36	36	1,473	0.183%
University of the Sunshine Coast	38	38	37	563	0.070%
Australian Maritime College	37	37	38	435	0.054%
Melbourne College of Divinity	*	39	39	235	0.029%
The University of Notre Dame Australia	39	40	40	194	0.024%
Bond University	40	41	41	86	0.011%
Batchelor Institute of Indigenous Tertiary Education	*	42	42	10	0.001%
<b>Total</b>				<b>804,963</b>	<b>100%</b>

Research Training Scheme (RTS )  
Institutional Grants Scheme (IGS)

\* Not reported in given year.

## Research Income

### x) *Research Income per 10 Research Staff FTE*

A Staff FTE is an equivalent full time academic staff member. This unit of measure allows for the fact that not all staff are working full-time at the University. Academic Staff may be classified as 'Teaching Only', 'Teaching and Research', 'Research Only' or 'Other'. The Commonwealth defines these measures and classifications for the universities. Only academic staff associated with Academic Organisational Units and designated as 'Research Only' or 'Teaching and Research' have been included in this indicator. These staff have been included because they are employed to undertake research. A rolling three year staff average has been used.

The data for this indicator are extracted from the Commonwealth Staff Data Collections, the Commonwealth funding statements and the University's Financial Records. The University's external research income has increased over the last five years.

	1998	1999	2000	2001	2002
Research Income (\$000's)	15,550	15,043	19,615	19,863	22,167
Research Staff (FTE)	312	322	329	339	351
Research Income per 10 Staff FTE	\$498,864	\$467,765	\$596,215	\$585,937	\$631,822

## Higher Degree by Research Completions

### xi) *Higher Degree by Research Completions per 10 Research Staff FTE*

The University has a desired outcome to increase the number of Higher Degrees by Research completions per 10 full-time equivalent (FTE) research staff. The Commonwealth defines research staff FTE for all universities. Only academic staff associated with Academic Organisational Units and classified as 'Research and Teaching' or 'Research Only', Lecturer B and above have been included in the calculation. All academic staff classified as 'Other' or 'Teaching Only', 'Research and Teaching' or 'Research Only' who are below Lecturer B have been excluded. These have been excluded because these staff are not employed to supervise postgraduate research students. A rolling three year staff average has been used.

The data for this indicator are extracted from the Commonwealth Student and Staff Data Collections. Due to the unresolved status of research students results at the time the Annual Report is prepared this indicator will be one year in arrears.

Degree Type	1997	1998	1999	2000	2001
Research Staff (FTE)	301	312	322	329	339
Master's by Research Completions	9	14	3	6	11
Doctorate by Research Completions	54	64	66	58	77
Master's Completions per 10 Staff	0.3	0.4	0.1	0.2	0.3
Doctorate Completions per 10 Staff	1.8	2.1	2.0	1.8	2.3
Total Completions per 10 Staff	2.1	2.5	2.1	1.9	2.6

## Efficiency Indicators

The data and indicators below demonstrate the efficiency with which the University is achieving its research outputs.

## Research Publications

### xii) *Number of publications per 10 Research Staff FTE*

This indicator demonstrates the number of publications per 10 full-time equivalent (FTE) research staff by publication type. The Commonwealth defines research staff FTE for all universities. The staff figures include academic staff associated with Academic Organisational Units who are classified as 'Research' or 'Teaching and Research Only' for the reasons stated above. Those academic staff classified as 'Teaching Only' or 'Other' have been excluded.

The data for this indicator are extracted from the Commonwealth Research Publications and Staff Data Collections which is completed on June 30 each year. The actual number of publications are adjusted to remove the contribution of non Murdoch staff e.g. if a publication is co-authored by two people, one of whom is not a Murdoch staff, the value is reported as 0.5. The timing of the collection completion makes it necessary to report the results in the subsequent year's annual report.



Publication Category	1997	1998	1999	2000	2001
Research Staff FTE	301	312	322	329	339
Books & Monographs	13.5	12.8	7.8	11.8	9.5
Refereed Journal Articles & Book Chapters	271.52	314.3	278.0	348.3	326.5
Published Conference Papers & Other	451.89	488.8	449.0	405.9	379.8
Books & Monographs per 10 Staff	0.5	0.4	0.2	0.4	0.3
Refereed Journal Articles & Book Chapters per 10 Staff	10.1	11.3	8.6	10.6	9.6
Published Conference Papers & Other per 10 Staff	15.0	15.7	13.9	12.3	11.2
Total per 10 Staff	24.5	26.2	22.8	23.3	21.1

## Student progress and completion

### xiii) Time to completion of Higher Degree by Research Students

This indicator measures the average time taken for Higher Degree by Research students to complete their study requirements. Students admitted to Higher Degrees are deemed to have the ability to complete at the point of selection, therefore this indicator demonstrates the efficiency of the student under the supervision of the University's staff. There are two definitions of time. For students enrolled prior to 2001 time is defined by the Commonwealth for Master of Philosophy students as 3 years and for Doctor of Philosophy as 5 years, and for those enrolled in 2001 and onwards it will be defined as 2 years and 4 years respectively. The time taken is allocated to the year in which the students completed.

The data for this indicator are extracted from the Commonwealth Student Data Collections and supplemented by the University's student records. The figures for 2002 are preliminary due to the unresolved student completion details. The final figures for 2002 will be reported in the 2003 Annual Report, but are not expected to differ significantly to the preliminary figures shown here.

The time to completion is affected by the number of students studying on a part time basis and the number of part time students who completed in the period.

Degree Type	1998	1999	2000	2001	2002
Master's by Research	2 yrs 7 mths	4 yrs 4 mths	3 yrs 1 mth	2 yrs 4 mths	1 yrs 6 mths
Doctorate by Research	4 yrs 1 mth	4 yrs 0 mths	4 yrs 0 mths	4 yrs 0 mths	4 yrs 4 mths



# certification of performance indicators

We hereby certify that the 2002 key performance indicators are based on proper records, are relevant and appropriate for assisting users to assess Murdoch University's performance, and fairly represent the performance of Murdoch University for the year ending 31 December 2002.



Geoff Bolton  
Chancellor



John Yovich  
Vice Chancellor

28 February 2003

murdoch university

# certificate of compliance

We hereby certify that during the period 1 January 2002 to 31 December 2002 Murdoch University has operated within the provisions of the Murdoch University Act 1973 - 1985 and has also complied with the Financial Administration and Audit Act (1985) and all other relevant written laws.



Geoff Bolton  
Chancellor



John Yovich  
Vice Chancellor

28 February, 2003

# statement of expenditure

Section 175 ZE of the Electoral Act 1907 requires the University to include a statement in the Annual Report setting out details of expenditure incurred by the University and certain classes of organisations.

The expenditure incurred by the University during the 2002 financial year was as follows:

The total amount of the expenditure was \$563,646

The classes of organisation, the names of the organisations within the class and the total expenditure for the class was as follows:

Agencies and organizations are not named where the expenditure was less than \$2,000 for the year, but the expenditure has been included in the total figure.

**(a) Advertising Agencies** **\$2,640**

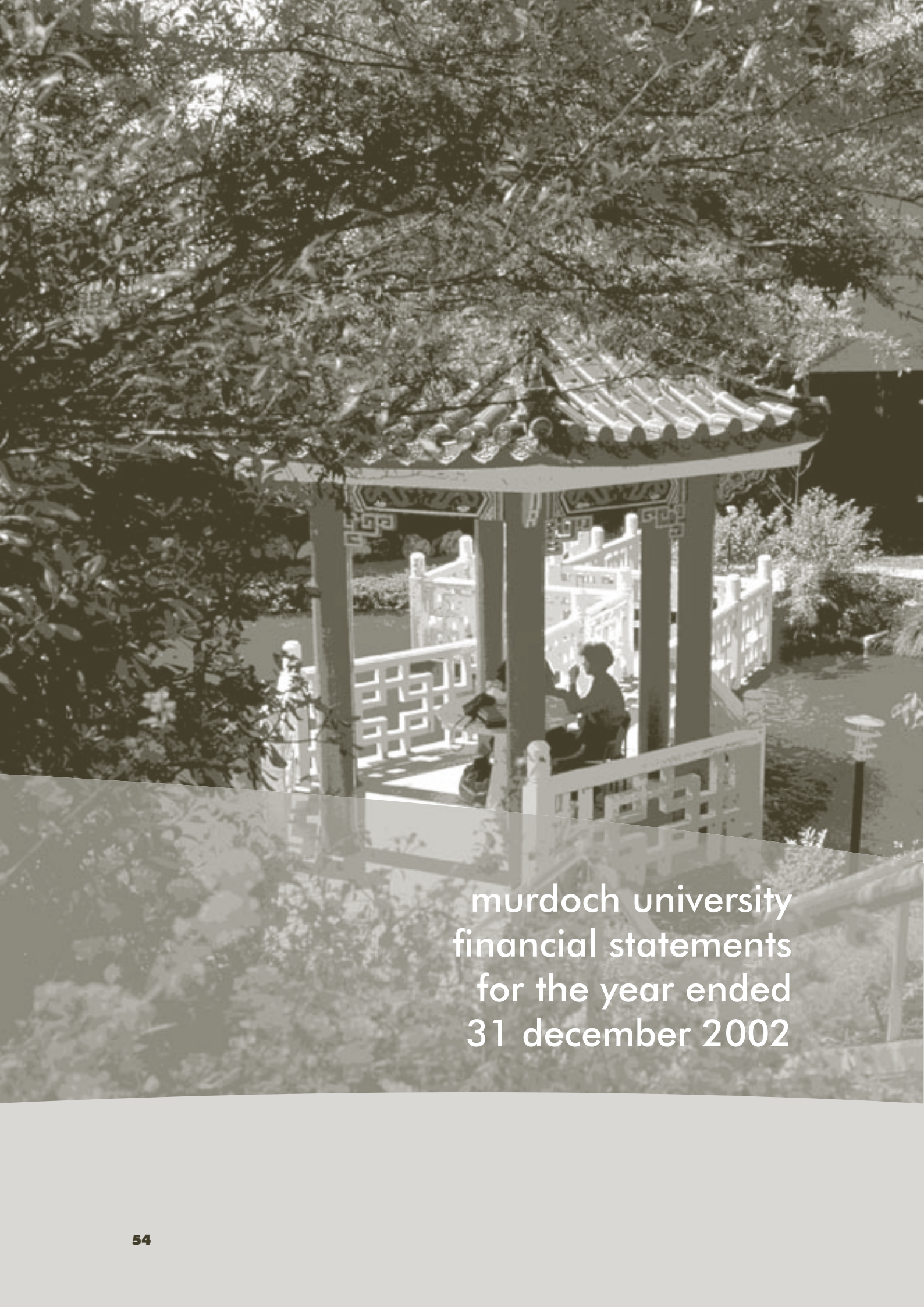
Wildmoon Marketing and Strategic Communication

**(b) Direct Mail Organisations** **\$69,777**

Lasermail Pty Ltd

**(c) Media Advertising Organisations** **\$491,229**

Ad Vision Advertising Pty Ltd  
Community Newspapers Group Ltd  
KHK Advertising Sdn Bhd  
Media Decisions WA  
Nexus Asatsu Advertising Pty Ltd  
Price Advertising  
West Australian Newspapers Ltd



murdoch university  
financial statements  
for the year ended  
31 december 2002

# certification of financial statements

The accompanying financial statements of Murdoch University and the accompanying consolidated financial statements have been prepared in compliance with the provisions of the Financial Administration and Audit Act 1985 from proper accounts and records to present fairly the financial transactions for the year ending 31 December 2002 and the financial position as at 31 December 2002.

At the date of signing we are not aware of any circumstance that would render the particulars included in the financial statements misleading or inaccurate.

At the date of signing there are reasonable grounds to believe that the institution will be able to pay its debts as and when they fall due.



G Bolton  
Chancellor



J V Yovich  
Vice Chancellor



G McMath  
Principal Accounting Officer

28 February 2003

## AUDITOR **GENERAL**

To the Parliament of Western Australia

### **MURDOCH UNIVERSITY PERFORMANCE INDICATORS FOR THE YEAR ENDED DECEMBER 31, 2002**

#### **Scope**

I have audited the accounts and financial statements of Murdoch University for the year ended December 31, 2002 under the provisions of the Financial Administration and Audit Act 1985. The financial statements include the consolidated accounts of the consolidated entity comprising the University and the entities it controlled at the year's end or from time to time during the financial year.

The University Senate is responsible for keeping proper accounts and maintaining adequate systems of internal control, preparing and presenting the financial statements, and complying with the Act and other relevant written law. The primary responsibility for the detection, investigation and prevention of irregularities rests with the University Senate.

My audit was performed in accordance with section 79 of the Act to form an opinion based on a reasonable level of assurance. The audit procedures included examining, on a test basis, the controls exercised by the University to ensure financial regularity in accordance with legislative provisions, evidence to provide reasonable assurance that the amounts and other disclosures in the financial statements are free of material misstatement and the evaluation of accounting policies and significant accounting estimates. These procedures have been undertaken to form an opinion as to whether, in all material respects, the financial statements are presented fairly in accordance with Accounting Standards and other mandatory professional reporting requirements in Australia and the Treasurer's Instructions so as to present a view which is consistent with my understanding of the University's and the consolidated entity's financial position, their financial performance and their cash flows.

The audit opinion expressed below has been formed on the above basis.

#### **Audit Opinion**

In my opinion,

- (i) the controls exercised by Murdoch University provide reasonable assurance that the receipt, expenditure and investment of moneys and the acquisition and disposal of property and the incurring of liabilities have been in accordance with legislative provisions; and
- (ii) the Statement of Financial Performance, Statement of Financial Position and Statement of Cash Flows of the University and the Consolidated Statement of Financial Performance, Consolidated Statement of Financial Position and Consolidated Statement of Cash Flows of the consolidated entity and the Notes to and forming part of the financial statements are based on proper accounts and present fairly in accordance with applicable Accounting Standards and other mandatory professional reporting requirements in Australia and the Treasurer's Instructions, the financial position of the University and the consolidated entity at December 31, 2002 and their financial performance and their cash flows for the year then ended.



**D D R PEARSON  
AUDITOR GENERAL  
May 2, 2003**

4th Floor Dumas House 2 Havelock Street West Perth 6005 Western Australia  
Tel: 08 9222 7500 Fax: 08 9322 5664





## Murdoch University Statement of Financial Position As at 31 December 2002

	Note	Consolidated		General University	
		2002	2001	2002	2001
		\$ '000	\$ '000	\$ '000	\$ '000
<b>Current Assets</b>					
Cash assets	25	2,540	2,239	2,138	-
Receivables	18	7,644	6,146	7,637	6,066
Restricted investments	26	9,016	8,115	9,016	8,115
Unrestricted investments	27	17,860	12,317	12,637	12,317
Inventories	19	740	780	740	780
Advances and prepayments		2,055	1,851	2,041	1,847
<b>Total Current Assets</b>		<b>39,855</b>	<b>31,448</b>	<b>34,209</b>	<b>29,125</b>
<b>Non-Current Assets</b>					
Property, plant and equipment	2	310,938	310,525	310,911	310,504
Loans	20	1,447	1,197	1,626	1,376
<b>Total Non-Current Assets</b>		<b>312,385</b>	<b>311,722</b>	<b>312,537</b>	<b>311,880</b>
<b>Total Assets</b>		<b>352,240</b>	<b>343,170</b>	<b>346,746</b>	<b>341,005</b>
<b>Current Liabilities</b>					
Bank Overdraft	25	-	-	-	257
Payables		3,263	2,851	3,196	2,818
Interest bearing liabilities	21	403	172	403	172
Accrued liabilities		880	447	880	447
Grants and fees in advance	22	10,631	9,796	10,278	9,518
Provisions	23	7,674	7,014	7,666	7,009
<b>Total Current Liabilities</b>		<b>22,851</b>	<b>20,280</b>	<b>22,423</b>	<b>20,221</b>
<b>Non-Current Liabilities</b>					
Interest bearing liabilities	24	9,853	8,387	9,853	8,387
Provisions	23	4,191	3,518	4,191	3,518
<b>Total Non-Current Liabilities</b>		<b>14,044</b>	<b>11,905</b>	<b>14,044</b>	<b>11,905</b>
<b>Total Liabilities</b>		<b>36,895</b>	<b>32,185</b>	<b>36,467</b>	<b>32,126</b>
<b>NET ASSETS</b>		<b>315,364</b>	<b>310,985</b>	<b>310,284</b>	<b>308,879</b>
<b>Equity</b>					
Reserves	29	156,616	156,584	156,436	156,584
Retained profits	30	158,729	154,401	153,843	152,295
<b>TOTAL EQUITY</b>		<b>315,345</b>	<b>310,985</b>	<b>310,279</b>	<b>308,879</b>

This Statement of Financial Position should be read in conjunction with the accompanying notes.

## Murdoch University Statement of Financial Performance

### For the year ended 31 December 2002

	Note	Consolidated		General University	
		2002	2001	2002	2001
		\$ '000	\$ '000	\$ '000	\$ '000
<b>REVENUE</b>					
Revenues from ordinary activities					
Commonwealth Government financial assistance	3	63,482	61,292	63,482	61,292
Higher Education Contribution Scheme	4	27,601	26,697	27,601	26,697
PELS	5	675	-	675	-
Other research grants and contracts	6	19,598	17,782	19,617	17,564
Donations and bequests	46	798	512	5,897	12,512
Investment income	7	1,156	847	1,049	711
Fees and charges	9	29,104	28,099	29,104	28,098
Trading income	8	4,717	2,335	4,717	2,335
Other	10	12,031	12,450	3,865	3,341
<b>Total revenues from ordinary activities</b>		<b>159,162</b>	<b>150,014</b>	<b>156,007</b>	<b>152,550</b>
<b>EXPENSES</b>					
Expenses from ordinary activities					
Academic activities	11	93,797	87,819	93,681	87,415
Libraries	12	7,193	8,221	7,193	8,221
Other academic support services	13	5,300	5,348	5,300	5,348
Student services	14	10,777	10,722	10,777	10,722
Public services	15	4,191	2,757	4,191	2,757
Buildings and grounds	16	14,136	16,223	13,877	16,098
Administration & other general institutional services	17	19,440	21,301	19,440	21,301
<b>Total expenses from ordinary activities</b>	<b>31</b>	<b>154,834</b>	<b>152,391</b>	<b>154,459</b>	<b>151,862</b>
<b>Profit (loss) from ordinary activities</b>		<b>4,328</b>	<b>(2,377)</b>	<b>1,548</b>	<b>688</b>
Net increase (decrease) in reserves	29	32	42,221	(148)	42,221
Total revenue, expenses and adjustments recognised directly in equity		-	42,221	-	42,221
<b>Total Changes in Equity</b>		<b>4,360</b>	<b>39,844</b>	<b>1,400</b>	<b>42,909</b>

The Statement of Financial Performance should be read in conjunction with the accompanying notes.

## Murdoch University Statement of Cash Flows For the year ended 31 December 2002

	Note	Consolidated		General University	
		2002	2001	2002	2001
		\$ '000	\$ '000	\$ '000	\$ '000
<b>Cash Flows from Operating Activities</b>					
Inflows:					
Commonwealth Government financial assistance		64,726	59,740	64,726	59,740
Higher Education Contribution Scheme					
Student payments		3,783	3,419	3,783	3,419
Higher Education Trust Fund		23,929	25,148	23,929	25,148
PELS		675	-	675	-
Fees and charges		28,175	28,319	28,175	28,318
Donations and bequests		702	542	5,801	12,542
Other research grants and contracts		18,194	18,991	18,120	18,835
Interest		1,055	1,039	948	903
Trading		4,763	2,545	4,763	2,545
Other		3,957	3,793	3,605	3,574
Outflows:					
Staff costs		(94,396)	(87,593)	(94,308)	(87,430)
Suppliers		(38,315)	(33,407)	(38,273)	(33,069)
Other		(2,868)	(8,316)	(3,025)	(8,273)
Net cash provided by operating activities	32	14,380	14,220	18,919	26,252
<b>Cash Flows from Investing Activities</b>					
Inflows:					
Proceeds from sale of property, plant and equipment		295	336	281	335
Proceeds from sales Murdoch Retirement Village		7,869	9,168	-	-
Outflows:					
Acquisition of property, plant and equipment		(8,891)	(8,597)	(8,868)	(8,582)
Building costs Murdoch Retirement Village units		(5,532)	(5,458)	(5,340)	(5,334)
Acquisition of artworks		(5)	(8)	(5)	(8)
Acquisition of library books		(2,818)	(3,413)	(2,818)	(3,413)
Net cash (used in) investing activities		(9,082)	(7,972)	(16,750)	(17,002)
<b>Cash Flows from Financing Activities</b>					
Inflows:					
Proceeds of borrowings from WATC		1,870	-	1,870	-
Repayment of loans		-	215	-	215
Outflows:					
Loans made		(250)	-	(250)	-
Repayment of borrowings to WATC		(173)	(2,366)	(173)	(2,366)
Net cash provided by (used in) financing activities		1,447	(2,151)	1,447	(2,151)
Net increase (decrease) in cash held		6,745	4,097	3,616	7,099
Balance of Cash 1 January		22,671	18,574	20,175	13,076
Balance of Cash 31 December	33	29,416	22,671	23,791	20,175

The Statement of Cash Flows should be read in conjunction with the accompanying notes

# notes to the financial reports

1. Statement of Accounting Policies
2. Property, Plant and Equipment
3. Commonwealth Government Financial Assistance – Revenue
4. Higher Education Contribution Scheme – Revenue
5. PELS – Post-graduate Loans Scheme – Revenue
6. Other Research Grants and Contracts – Revenue
7. Investment Income – Revenue
8. Trading Income – Revenue
9. Fees and Charges – Revenue
10. Other Income – Revenue
11. Academic Activities – Expenses
12. Libraries – Expenses
13. Other Academic Support Services - Expenses
14. Student Services – Expenses
15. Public Services – Expenses
16. Buildings and Grounds – Expenses
17. Administration and Other General Services – Expenses
18. Receivables
19. Inventories
20. Non Current Assets – Loans
21. Current Liabilities – Interest Bearing Liabilities
22. Grants and Fees in Advance
23. Provisions
24. Non Current Liabilities – Interest Bearing Liabilities
25. Cash Assets / (Bank Overdraft)
26. Restricted Investments
27. Unrestricted Investments
28. Capital Commitments
29. Reserves
30. Retained Profits
31. Total Operating Expenses by Objective Classification
32. Reconciliation of Net Cash from Operating Activities
33. Reconciliation of Cash
34. Losses
35. Write Offs
36. Remuneration of Auditor
37. Non Current Investments
38. Remuneration of Senior Officers
39. Remuneration of Senate Members
40. Superannuation Fund Contributions
41. Explanatory Statement – Actual and Budget Variances
42. Financial Instruments
43. Segment Information
44. Events Subsequent to Reporting Date
45. Contingent Liabilities
46. Subsidiary Bodies
47. Operating Leases
48. Associated Entities
49. Acquittal of Commonwealth Government Grants

# notes to and forming part of the financial statements

31 December 2002

## 1. Statement of Accounting Policies

The following accounting policies have been adopted in the preparation of the Murdoch University financial statements. Unless otherwise stated these policies are consistent with those adopted in the preceding year.

### (a) General System of Accounting

The financial statements are prepared in accordance with the provision of the Financial Administration and Audit Act 1985. Additional disclosures have been included in accordance with instructions issued by the Department of Education, Science and Training (DEST), for the preparation of annual financial reports by Australian Higher Education Institutions.

These financial statements constitute a general purpose financial report that is prepared in accordance with Australian Accounting Standards and the Urgent Issues Group (UIG) Consensus Views, as applied by the Treasurer's Instructions. Several of these are modified by the Treasurer's Instructions to vary application, disclosure, format and wording.

The Financial Administration and Audit Act 1985 (WA) and the Treasurer's Instructions are legislative provisions governing the preparation of financial statements and take precedence over the Australian Accounting Standards and the UIG Consensus Views. Modifications to the Australian Accounting Standards and UIG Consensus views are meant to meet the requirements of their general application to the public sector, together with need for greater disclosure and accountability. If any modification has a material or significant effect on the reported results, details of that modification and where practicable, the resulting financial effect, are disclosed in individual notes to these financial statements.

The accounts have been drawn up on the basis of historical cost principles subject to the exceptions noted in the paragraphs below.

The accrual basis of accounting has been applied.

### (b) Principles of Consolidation

The column headed "General University" discloses the results of the University operations. The column headed "Consolidated" incorporates the results of controlled entities of the University.

The University Company Pty Ltd, Murdoch Retirement Services Ltd and Paragen Pty Ltd are the only controlled entities of the University that had any financial transactions during the year.

### (c) Valuation of Non-Current Assets

The current University policy for valuing land, buildings and artworks is every three years. Fair value has been determined on the basis of current use land value for the Murdoch University campus and market land value for all other land.

Buildings are valued at estimated current replacement costs less accumulated depreciation.

Other fixed assets are presented at historical cost less depreciation where appropriate.

Equipment was capitalised for items costing more than \$1,000 and having a useful life of more than 2 years up to the year ended 31 December 2000. This threshold was increased to \$5,000 as from 1 January 2001. Equipment purchased prior to the current year and costing less than \$5,000 has been retained on the asset register and depreciation applied.

The valuation for library books is based on acquisition for three years to the end of the current financial year. The University has adopted a "rolling depreciation" methodology for library books, whereby acquisitions in the fourth year preceding the reporting year are charged to depreciation.

## Murdoch University

### notes to and forming part of the financial statements

#### (d) Valuation of Investments

Investments are stated at historical cost.

The market value of listed shares held by the University at balance date is:

2000	\$10,071
2001	\$10,071
2002	\$10,071

The University holds shares in companies acquired or received in exchange for the University's support of specific operations. The values of these shares are not recorded in the financial statements as the amount is insignificant and the determination of the market value is not reliable.

#### (e) Depreciation of Non-Current Assets

All non-current assets having a limited useful life are systematically depreciated over their useful lives in a manner that reflects the consumption of their future economic benefits.

Depreciation of computer and other equipment has been calculated on the straight-line method for the current and previous financial year and on the reducing balance basis in previous years. The depreciation rates for the current and previous financial years are:

Computer Equipment - 25%

Other Equipment - 12.5%

For buildings, the average remaining life has been assessed as 50 years.

Depreciation is not calculated on motor vehicles as the University purchases motor vehicles exempt from GST and the proceeds of disposals approximate the purchase price.

Works of art are considered as heritage assets and are anticipated to have very long and indeterminate useful lives. Their service potential has not, in any material sense, been consumed during the reporting period. As such, no amount for depreciation has been recognised in respect of works of art.

The basis for depreciation and the depreciation rates are reviewed annually.

Profits and losses, from the disposal of fixed assets, have been taken into account in determining the profit on operating activities for the financial year.

#### (f) Inventories

Inventories are valued at the lower of cost or net realisable value with provisions being made for obsolescence where considered necessary.

#### (g) General University

Relates to the income and expenditure relevant to the general operating activities of the University. Income is derived principally from Commonwealth Government financial assistance, research grants, interest earned from the investment of funds and overseas full fee-paying students.

#### (h) Employee Entitlements - Provision for Annual and Long Service Leave

Provision is made for the University liability for employee entitlements arising from services rendered by employees to balance date. Employee entitlements expected to be settled within one year together with salary and wage entitlements along with annual leave that will be settled within one year are measured at their nominal amount. Other employee entitlements payable later than one year are measured at the present value of future cash flows on a basis consistent with Australian Accounting Standards (AASB1028).

## **Murdoch University**

### **notes to and forming part of the financial statements**

#### **(i) Employee Entitlements - Superannuation**

The following superannuation schemes are operative for University employees with contributions based on a percentage of earnings.

- Unisuper Award Advanced - Superannuation Scheme for Australian Universities  
University contribution 14% and employee contribution 7%  
University contribution 7% and employee contribution 3.5%
- Unisuper Award Plus - Superannuation Scheme for Australian Universities  
University contribution 8% (January to June) and 9% (July to December) and employee contribution 0%

The University also contributes 3% of earnings for Unisuper Award Advanced to Unisuper Award Plus as part of the industrial award.

#### **(j) Insurance**

Insurance cover is effective for all usual commercial risks.

#### **(k) Special Reserves**

Special Reserves are created for funds that are retained for expenditure on specified items in future years.

#### **(l) Leased Assets**

The University has no assets subject to finance leases.

The University has entered into a number of operating lease arrangements for equipment and motor vehicles. Lessors effectively retain all risks and benefits incidental to ownership of the items held under the operating lease. Equal instalments of the lease payments are charged to the operating statement over the lease term, as this is representative of the pattern of benefits to be derived from the lease property.

Details of operating leases are shown in note 47 to the financial statements.

#### **(m) Current Assets**

Trade debtors are initially recorded at the amount of contracted sales proceeds. A provision for doubtful debts is recognised to the extent that recovery of outstanding debts is less than likely.

Bank deposits are carried at cost.

#### **(n) Current Liabilities**

Creditors are recognised as amounts to be paid in the future for goods and services received, whether or not billed before balance date.

#### **(o) Associated Entities**

Murdoch University has a 45% ownership interest in Murdoch College Properties Pty Ltd, a company whose principal activity is to provide the infrastructure on the University's campus for the secondary school operations of Murdoch College (Inc).

Murdoch College International, a company 100% owned by the Alexander Education Group, holds the remaining 55% ownership interest.

Murdoch University has leased land, on a peppercorn rental basis of \$1 per annum, to Murdoch College Properties Pty Ltd, with a lease term of 50 years. Title to the buildings will revert to Murdoch University upon expiry of the lease.

Details of the associated entity are shown in note 48 to the financial statements.

#### **(p) Comparative Figures**

Comparative figures are, where appropriate, reclassified so as to be comparable with the figures presented in the current financial year.



**Murdoch University**  
**notes to and forming part of the financial statements**

	Consolidated		General University	
	2002 \$ '000	2001 \$ '000	2002 \$ '000	2001 \$ '000
<b>2. Property, Plant and Equipment</b>				
Land at valuation	103,305	103,305	103,305	103,305
Buildings at cost	9,908	4,510	9,908	4,510
Accumulated depreciation	259	36	259	36
	9,649	4,474	9,649	4,474
Buildings at valuation	172,598	172,694	172,598	172,694
Accumulated depreciation	6,835	3,454	6,835	3,454
	165,763	169,240	165,763	169,240
Work in Progress	9,117	7,745	9,117	7,745
<b>Total Land and Buildings</b>	<b>287,834</b>	<b>284,764</b>	<b>287,834</b>	<b>284,764</b>
Computing equipment at cost	15,349	16,865	15,345	16,861
Accumulated depreciation	12,632	12,193	12,630	12,191
<b>Computing Equipment</b>	<b>2,717</b>	<b>4,672</b>	<b>2,715</b>	<b>4,670</b>
Other equipment at cost	29,469	28,724	29,431	28,711
Accumulated depreciation	19,380	17,063	19,367	17,055
<b>Other Equipment</b>	<b>10,089</b>	<b>11,661</b>	<b>10,064</b>	<b>11,656</b>
Motor Vehicles at cost	1,515	1,548	1,515	1,534
Artworks at cost	13	8	13	8
Artworks at valuation	1,224	1,224	1,224	1,224
<b>Artworks</b>	<b>1,237</b>	<b>1,232</b>	<b>1,237</b>	<b>1,232</b>
Library books at cost	9,260	9,288	9,260	9,288
Accumulated depreciation	1,714	2,640	1,714	2,640
<b>Library Books</b>	<b>7,546</b>	<b>6,648</b>	<b>7,546</b>	<b>6,648</b>
<b>Total Property, Plant and Equipment</b>	<b>310,938</b>	<b>310,525</b>	<b>310,911</b>	<b>310,504</b>

These details of property, plant and equipment should be read in conjunction with notes 1 (c) and 1 (e) relating to the valuation and depreciation of non-current assets.

## notes to and forming part of the financial statements

Land	Buildings	Building works in progress	Computing equipment	Other equipment	Motor vehicles	Artworks	Library Books	Total
\$ '000	\$ '000	\$ '000	\$ '000	\$ '000	\$ '000	\$ '000	\$ '000	\$ '000

## 2. Property, Plant and Equipment (continued)

## Reconciliations

Reconciliations of the carrying amounts of property, plant and equipment at the beginning and end of the current financial year as set out below.

## Consolidated - 2002

Carrying amount at start of year	103,305	173,714	7,745	4,672	11,661	1,548	1,232	6,648	310,525
Additions	-	5,397	9,069	651	1,663	366	5	2,612	19,763
Disposals	-	(94)	(7,697)	(139)	(258)	(399)	-	-	(8,587)
Depreciation	-	(3,605)	-	(2,467)	(2,977)	-	-	(1,714)	(10,763)
Carrying amount at end of year	103,305	175,412	9,117	2,717	10,089	1,515	1,237	7,546	310,938

## General University - 2002

Carrying amount at start of year	103,305	173,714	7,745	4,670	11,656	1,534	1,232	6,648	310,504
Additions	-	5,397	9,069	651	1,636	366	5	2,612	19,736
Disposals	-	(94)	(7,697)	(140)	(253)	(385)	-	-	(8,569)
Depreciation	-	(3,605)	-	(2,466)	(2,975)	-	-	(1,714)	(10,760)
Carrying amount at end of year	103,305	175,412	9,117	2,715	10,064	1,515	1,237	7,546	310,911

## notes to and forming part of the financial statements

	Consolidated		General University	
	2002	2001	2002	2001
	\$ '000	\$ '000	\$ '000	\$ '000
<b>3. Commonwealth Government Financial Assistance (excluding HECS)</b>				
Grants Pursuant to the Higher Education Funding Act and ARC Act				
Operating purposes excluding HECS	57,417	55,588	57,417	55,588
ARC Large Grants	1,280	1,159	1,280	1,159
ARC Indigenous Researchers Development	28	-	28	-
ARC Infrastructure	347	-	347	-
ARC SPIRT	1,304	1,153	1,305	1,153
ARC International Researcher Exchange	11	21	11	21
Research Infrastructure Block Grants	1,509	1,042	1,508	1,042
Australian Postgraduate Awards	1,367	1,243	1,367	1,243
International Postgraduate Research	228	268	228	268
Small Grants Scheme	(9)	305	(9)	305
Capital Development Pool	-	520	-	520
	63,482	61,299	63,482	61,299
Adjustments - Previous Years Grants	-	(7)	-	(7)
	63,482	61,292	63,482	61,292

**4. Higher Education Contribution Scheme**

Grants Pursuant to the Higher Education Funding Act

Commonwealth Government payments	23,818	23,278	23,818	23,278
Student contributions	3,783	3,419	3,783	3,419
	27,601	26,697	27,601	26,697

**5. PELS - Post-graduate Loans Scheme**

Grants Pursuant to the Higher Education Funding Act

Commonwealth Government payments	675	-	675	-
----------------------------------	-----	---	-----	---

**6. Other Research Grants and Contracts**

Income from other research grants and contracts was obtained by the University from the following sources during the reporting period:

Commonwealth Government grants	9,080	8,601	9,080	8,581
Western Australian Government grants	2,584	3,086	2,584	3,086
Other sources	7,934	6,095	7,953	5,897
	19,598	17,782	19,617	17,564

**Murdoch University**  
**notes to and forming part of the financial statements**

Consolidated		General University	
2002	2001	2002	2001
\$ '000	\$ '000	\$ '000	\$ '000

**7. Investment Income**

Investment income was earned during the year by the University from investments held:

Bank bills and deposits	1,156	847	1,049	711
-------------------------	-------	-----	-------	-----

**8. Trading Income**

The trading income is from the operations of the University Bookshop and Veterinary Hospital

Sales	7,638	6,604	7,638	6,604
Less cost of goods sold				
Opening inventory	780	916	780	916
Purchases	2,881	4,133	2,881	4,133
	3,661	5,049	3,661	5,049
Closing inventory	740	780	740	780
	2,921	4,269	2,921	4,269
Gross Profit on Trading	4,717	2,335	4,717	2,335

**9. Fees and Charges**

Murdoch Retirement Services Ltd revenue has been reclassified to other income.  
Fees and charges were collected from the following sources during the reporting year:

AUSAID Students Trust	231	595	231	595
Continuing Education	-	29	-	29
Fees-approved post graduate award students	2,179	1,800	2,179	1,800
Full fee paying overseas students	16,302	15,588	16,302	15,588
Murdoch College Inc	1,117	-	1,117	-
Off Shore programme fees	2,149	3,820	2,149	3,820
Other fees and charges	21	(77)	21	(78)
Parking	574	513	574	513
Rentals & commissions	850	562	850	562

**Divisions, Research Centres and Institutes:**

Council on International Educational Exchange	183	349	183	349
Division of Academic Affairs	447	725	447	725
Division of Administration	382	253	382	253
Division of Business, Information Technology & Law	304	125	304	125
Division of Science & Engineering	1,535	1,158	1,535	1,158
Division of Social Sciences, Humanities & Education	158	242	158	242
Division of Veterinary & Biomedical Sciences	145	182	145	182
Research Centres & Institutes	427	232	427	232
Student Village	2,100	2,003	2,100	2,003
	29,104	28,099	29,104	28,098

**Murdoch University**  
**notes to and forming part of the financial statements**

Consolidated		General University	
2002	2001	2002	2001
\$ '000	\$ '000	\$ '000	\$ '000

**10. Other Income**

Murdoch Retirement Services Ltd revenue has been reclassified from fees and charges. Other income was collected from the following sources during the reporting year:

Insurance claims	78	124	78	124
Other income	60	231	58	199
Service charges	430	428	430	428
Special Reserves	-	207	-	207

**Divisions, Research Centres and Institutes:**

Division of Academic Affairs	1,588	746	1,588	746
Division of Administration	232	177	232	177
Division of Business, Information Technology & Law	56	59	56	59
Division of Science & Engineering	295	138	295	138
Division of Social Sciences, Humanities & Education	143	113	143	113
Division of Veterinary & Biomedical Sciences	313	591	313	591
Research Centres & Institutes	78	148	78	148
International Office	531	411	531	411
Murdoch College Properties Pty Ltd	63	-	63	-
Murdoch Retirement Services Ltd	8,164	9,077	-	-
	<b>12,031</b>	<b>12,450</b>	<b>3,865</b>	<b>3,341</b>

**11. Academic Activities**

Academic staff salaries	35,633	31,658	35,555	31,598
Academic staff salary related costs	8,022	7,855	8,012	7,846
Non-academic staff salaries	16,452	16,137	16,449	16,052
Non-academic staff salary related costs	2,711	2,693	2,711	2,679
Depreciation expense - Buildings	1,812	1,810	1,812	1,810
Depreciation expense - Equipment	3,804	4,655	3,804	4,653
Other expenses	25,363	23,011	25,338	22,777
	<b>93,797</b>	<b>87,819</b>	<b>93,681</b>	<b>87,415</b>

**12. Libraries**

Non-academic staff salaries	2,991	2,933	2,991	2,933
Non-academic staff salary related costs	760	744	760	744
Depreciation expense - Buildings	426	434	426	434
Depreciation expense - Equipment	283	320	283	320
Depreciation expense - Library Books	1,714	2,641	1,714	2,641
Other expenses	1,019	1,149	1,019	1,149
	<b>7,193</b>	<b>8,221</b>	<b>7,193</b>	<b>8,221</b>

**notes to and forming part of the financial statements**

	Consolidated		General University	
	2002	2001	2002	2001
	\$ '000	\$ '000	\$ '000	\$ '000
<b>13. Other Academic Support Services</b>				
Academic staff salaries	771	726	771	726
Academic staff salary related costs	193	135	193	135
Non-academic staff salaries	2,755	2,397	2,755	2,397
Non-academic staff salary related costs	927	611	927	611
Depreciation expense - Buildings	207	204	207	204
Depreciation expense - Equipment	368	574	368	574
Other expenses	79	701	79	701
	<b>5,300</b>	<b>5,348</b>	<b>5,300</b>	<b>5,348</b>

**14. Student Services**

Academic staff salaries	454	213	454	213
Academic staff salary related costs	87	42	87	42
Non-academic staff salaries	6,787	6,689	6,787	6,689
Non-academic staff salary related costs	(25)	736	(25)	736
Depreciation expense - Buildings	440	437	440	437
Depreciation expense - Equipment	46	65	46	65
Other expenses	2,988	2,540	2,988	2,540
	<b>10,777</b>	<b>10,722</b>	<b>10,777</b>	<b>10,722</b>

**15. Public Services**

Murdoch Retirement Services Ltd expenses have been reclassified to buildings and grounds.

Academic staff salaries	359	314	359	314
Academic staff salary related costs	42	55	42	55
Non-academic staff salaries	2,284	1,992	2,284	1,992
Non-academic staff salary related costs	415	274	415	274
Depreciation expense - Equipment	11	24	11	24
Other expenses	1,080	98	1,080	98
	<b>4,191</b>	<b>2,757</b>	<b>4,191</b>	<b>2,757</b>

**16. Buildings and Grounds**

Murdoch Retirement Services Ltd expenses have been reclassified from public services.

Non-academic staff salaries	2,863	2,960	2,863	2,960
Non-academic staff salary related costs	671	477	671	477
Depreciation expense - Buildings	126	125	126	125
Depreciation expense - Equipment	227	261	227	261
Other expenses	4,540	5,334	4,540	5,334
Murdoch Retirement Services Ltd	5,709	7,066	5,450	6,941
	<b>14,136</b>	<b>16,223</b>	<b>13,877</b>	<b>16,098</b>

**Murdoch University**  
**notes to and forming part of the financial statements**

	Consolidated		General University	
	2002	2001	2002	2001
	\$ '000	\$ '000	\$ '000	\$ '000
<b>17. Administration &amp; Other General Institutional Services</b>				
Academic staff salaries	1,187	191	1,187	191
Academic staff salary related costs	256	32	256	32
Non-academic staff salaries	7,600	8,240	7,600	8,240
Non-academic staff salary related costs	1,444	1,585	1,444	1,585
Depreciation expense - Buildings	483	481	483	481
Depreciation expense - Equipment	701	824	701	824
Other expenses	7,769	9,948	7,769	9,948
	19,440	21,301	19,440	21,301

**18. Receivables**

The provision for doubtful debts represent amounts due and payable for student loans and fees.

Gross debtors	10,356	8,515	10,330	8,435
less provision for doubtful debts	(2,712)	(2,369)	(2,693)	(2,369)
	7,644	6,146	7,637	6,066

**19. Inventories**

Bookshop	370	385	370	385
Veterinary Hospital	370	395	370	395
	740	780	740	780

**20. Non Current Assets - Loans**

Murdoch College Properties Pty Ltd	900	900	900	900
Club Murdoch	277	277	277	277
The University Company Pty Ltd	-	-	179	179
Howard Court Residents' Association	20	20	20	20
Murdoch University Guild of Students	250	-	250	-
	1,447	1,197	1,626	1,376

**21. Current Liabilities - Interest Bearing Liabilities**

**WA Treasury Corporation**

Student Village Housing	178	172	178	172
Equine Scintigraphy Facility (DVBS)	225	-	225	-
	403	172	403	172

**22. Grants and Fees in Advance**

Commonwealth Government grants	7,837	6,482	7,837	6,482
Student fees and charges	2,441	3,036	2,441	3,036
Murdoch Retirement Services Ltd	353	278	-	-
	10,631	9,796	10,278	9,518

## notes to and forming part of the financial statements

	Consolidated		General University	
	2002 \$ '000	2001 \$ '000	2002 \$ '000	2001 \$ '000
<b>23. Provisions</b>				
<b>Current</b>				
Annual leave	2,258	2,182	2,250	2,177
Long service leave	5,416	4,832	5,416	4,832
	7,674	7,014	7,666	7,009
<b>Non-current</b>				
Long service leave	4,191	3,518	4,191	3,518
<b>Total employee leave entitlements</b>	11,865	10,532	11,857	10,527
<b>24. Non Current Liabilities - Interest Bearing Liabilities</b>				
<b>WA Treasury Corporation</b>				
Student Village Housing	2,619	2,797	2,619	2,797
Murdoch Retirement Services Ltd	5,590	5,590	5,590	5,590
Equine Scintigraphy Facility (DVBS)	1,644	-	1,644	-
	9,853	8,387	9,853	8,387
<b>25. Cash Assets / (Bank Overdraft)</b>				
Bank accounts	2,452	2,210	2,050	(286)
Cash advances	88	29	88	29
	2,540	2,239	2,138	(257)
<b>26. Restricted Investments</b>				
Research grants held in investments	9,016	8,115	9,016	8,115
<b>27. Unrestricted Investments</b>				
Bank bills and deposits	26,866	20,422	21,643	20,422
Shares	10	10	10	10
	26,876	20,432	21,653	20,432
less restricted investments	(9,016)	(8,115)	(9,016)	(8,115)
	17,860	12,317	12,637	12,317
<b>28. Capital Commitments</b>				
Commitments for capital expenditure that have not been provided in the financial statements. These commitments mainly relate to St Ives Murdoch retirement village.				
<b>Buildings</b>				
Within 1 year	18,597	10,980	18,597	10,980
Later than 1 year, not later than 2 years	8,117	15,680	8,117	15,680
	26,714	26,660	26,714	26,660



**notes to and forming part of the financial statements**

	Consolidated		General University	
	2002 \$ '000	2001 \$ '000	2002 \$ '000	2001 \$ '000
<b>29. Reserves</b>				
<b>Asset Revaluation Reserve</b>				
Opening balance	156,080	113,859	156,080	113,859
Net revaluation increments				
Land	-	35,545	-	35,545
Buildings	-	6,270	-	6,270
Artworks	-	406	-	406
Closing balance	156,080	156,080	156,080	156,080

The asset revaluation reserve is used to record increments and decrements on the revaluation of non-current assets, as described in accounting policy note 1 (c).

**Plant, Equipment and Motor Vehicles Reserve**

Opening balance	504	296	504	296
Transfer to (from) reserves	32	208	(148)	208
Closing balance	536	504	356	504
Total Reserves	156,616	156,584	156,436	156,584

**30. Retained Profits**

Opening balance	154,401	156,986	152,295	151,815
Net profit (loss) from ordinary activities	4,328	(2,377)	1,548	688
Transfer from (to) reserves	-	(208)	-	(208)
Closing balance	158,729	154,401	153,843	152,295

See note 46 to the financial statements.

**Murdoch University**  
**notes to and forming part of the financial statements**

	Consolidated		General University	
	2002 \$ '000	2001 \$ '000	2002 \$ '000	2001 \$ '000
<b>31. Total Operating Expenses Detail by Objective Classification</b>				
Annual and long service leave provisions	1,340	1,525	1,340	1,525
Bad and doubtful debts	207	2,369	188	2,369
Books and periodicals	292	302	292	302
Contributions and subscriptions	315	736	315	712
Depreciation - Buildings	3,494	3,490	3,494	3,490
Depreciation - Equipment	5,444	6,724	5,441	6,722
Depreciation - Library Books	1,714	2,641	1,714	2,641
Fuel and power	1,933	2,037	1,933	2,037
Insurance	382	256	382	256
Net loss on disposal of non-current assets	574	1,833	574	1,832
Materials and supplies	31,114	25,381	31,133	25,230
Other expenses	2,913	5,770	2,900	5,717
Murdoch Retirement Services Ltd	5,709	7,065	5,451	6,940
Payroll tax	4,973	4,300	4,968	4,291
Postage, telephone and fax	999	1,147	999	1,147
Salaries and allowances	73,753	69,321	73,673	69,176
Scholarships	5,774	5,128	5,774	5,128
Superannuation	9,848	9,080	9,842	9,067
Travel	3,643	2,953	3,633	2,948
Workers' compensation	413	333	413	332
	<b>154,834</b>	<b>152,391</b>	<b>154,459</b>	<b>151,862</b>
<b>32. Reconciliation of profit from ordinary activities to net cash flows provided by operating activities</b>				
<b>Profit from ordinary activities</b>	4,328	(2,377)	1,548	688
<b>Non-cash items:</b>				
Depreciation expense	10,763	12,855	10,649	12,853
Murdoch Retirement Village profits relating to sales	(7,869)	(8,890)	-	-
Murdoch Retirement Village building costs	5,532	7,065	5,451	6,940
Loss on sale of assets	243	1,833	243	1,832
Special reserves	32	-	(148)	-
<b>Changes in Assets and Liabilities</b>				
Receivables	(1,498)	(53)	(1,571)	(13)
Advances and prepayments	(204)	161	(194)	160
Inventories	40	136	40	136
Provisions	1,333	1,530	1,330	1,525
Accrued liabilities	433	312	433	312
Payables	412	206	378	377
Grants and fees in advance	835	1,442	760	1,442
<b>Net cash provided by operating activities</b>	<b>14,380</b>	<b>14,220</b>	<b>18,919</b>	<b>26,252</b>

**Murdoch University**  
**notes to and forming part of the financial statements**

Consolidated		General University	
2002	2001	2002	2001
\$ '000	\$ '000	\$ '000	\$ '000

**33. Reconciliation of Cash**

For the purposes of the statement of cash flow, cash includes cash on hand and bank accepted bills and deposits.

Cash at bank and on hand	2,540	2,239	2,138	(257)
Bank accepted bills and deposits	26,876	20,432	21,653	20,432
Cash as per the Statement of Cash Flows	29,416	22,671	23,791	20,175

**34. Losses**

Where appropriate, reports were made to the police and insurance claims submitted where the value exceeded the excess liability on the University's insurance policy.

Theft and default	122	122	122	122
-------------------	-----	-----	-----	-----

**35. Write-Offs**

Bad debts written off by the University Senate during the financial period.

	164	11	164	11
--	-----	----	-----	----

**36. Remuneration of Auditor**

The total fees paid or due and payable to the Office of the Auditor General for the financial year is as follows:

Auditing the accounts (excluding GST)	101	96	92	87
---------------------------------------	-----	----	----	----

**37. Non Current Investments**

Murdoch University has a 45% ownership interest in Murdoch College Properties Pty Ltd, a company whose principal activity is to provide the infrastructure on the University's campus for the secondary school operations of Murdoch College (Inc). The remaining 55% interest is held by Murdoch College International, 100% owned by the Alexander Education Group. See note 48 to the financial statements.

	\$	\$	\$	\$
<b>Associates</b>				
Equity accounted shares in associated entities				
- retained profits (losses) after tax and before audit	(69,876)	(14,722)	-	-
Shares in associated entities at cost	45	45	45	45
	(69,831)	(14,677)	45	45

**notes to and forming part of the financial statements**

Consolidated		General University	
2002	2001	2002	2001
\$ '000	\$ '000	\$ '000	\$ '000

**38. Remuneration of Senior Officers**

The total of fees, salaries, bonuses and motor vehicle benefits (excluding superannuation which is reported under note 40) received or due and receivable for the financial year by Senior Officers of the University.

<b>Actual total remuneration excluding superannuation</b>	1,276	1,315	1,276	1,315
---	-------	-------	-------	-------

The number of Senior Officers whose total of fees, salaries and other benefits, received or were due and receivable, for the financial year fall within the following bands:

\$ 10,001 - \$ 20,000	1	-	1	-
\$ 50,001 - \$ 60,000	1	-	1	-
\$ 70,001 - \$ 80,000	1	-	1	-
\$ 100,001 - \$ 110,000	-	2	-	2
\$ 110,001 - \$ 120,000	-	1	-	1
\$ 120,001 - \$ 130,000	1	1	1	1
\$ 130,001 - \$ 140,000	3	2	3	2
\$ 140,001 - \$ 150,000	-	1	-	1
\$ 160,001 - \$ 170,000	2	1	2	1
\$ 250,001 - \$ 260,000	1	-	1	-
\$ 280,001 - \$ 290,000	-	1	-	1

The remuneration of Senior Officers excludes the Vice Chancellor whose remuneration is reported under Remuneration of Senate Members

**39. Remuneration of Senate Members**

The total of fees, salaries and other benefits (excluding superannuation which is reported under note 40) received or due and receivable for the financial year by Senate Members.

Actual total remuneration excluding superannuation	336	277	336	277
--	-----	-----	-----	-----

The number of Senate Members whose total of fees, salaries and other benefits, received or were due and receivable for the financial year falls within the following band:

\$ 270,001 - \$ 280,000	-	1	-	1
\$ 330,001 - \$ 340,000	1	-	1	-

The Vice Chancellor is the only member of Senate who receives fees, salaries and other benefits. The position of Vice Chancellor was held by three incumbents during 2002. These appointments overlapped during transitional periods.

**40. Superannuation Fund Contributions**

In respect of Senate Members and Senior Officers the following contributions were made or became payable for the financial year:

**Other Superannuation Funds**

Senate Members	42	47	42	47
Senior Officers	192	172	192	172
	234	219	234	219

There are no Senate Members and Senior Officers presently employed who are members of the Superannuation and Family Benefits Scheme.

## notes to and forming part of the financial statements

### 41. Explanatory Statement

The following compares estimates and actual results for the financial year and actual revenues and expenses from ordinary activities for the financial year and immediately preceding financial year. The explanatory statement reports significant variations exceeding 15% and \$200,000.

	Note	2002 Actual \$ ' 000	2002 Estimate \$ ' 000	2002 Variation \$ ' 000	2001 Actual \$ ' 000	Actual/ Actual Variation \$ ' 000
<b>Revenues from ordinary activities</b>						
Commonwealth Government financial assistance		63,482	61,946	1,536	61,292	2,190
Higher Education Contribution Scheme		27,601	26,642	959	26,697	904
PELS	(a)	675	-	675	-	675
Other research grants and contracts		19,598	17,583	2,015	17,782	1,816
Donations and bequests	(b)	798	538	260	512	286
Investment income	(c)	1,156	1,028	128	847	309
Fees and charges		29,104	26,520	2,584	28,099	1,005
Trading income	(d)	4,717	4,240	477	2,335	2,382
Other		12,031	12,154	(123)	12,450	(419)
		159,162	150,651	8,511	150,014	9,148
<b>Expenses from ordinary activities</b>						
Academic activities		93,797	85,927	(7,870)	87,819	5,978
Libraries		7,193	7,247	54	8,221	(1,028)
Other academic activities		5,300	5,325	25	5,348	(48)
Student services		10,777	11,135	358	10,722	55
Public services	(e)	4,191	3,544	(647)	2,757	1,434
Buildings and grounds		14,136	14,346	210	16,223	(2,087)
Administration and other general institutional services		19,440	20,630	1,190	21,301	(1,861)
		154,834	148,154	(6,680)	152,391	2,443

### Variations between actuals and estimates for 2002 and actuals for 2002 and 2001

- (a) Revenue from the Commonwealth Government PELs (Post-graduate loan scheme) not included in estimates for the financial year or received in previous years.
- (b) Donations and bequests received for the Law campaign not included in estimates.
- (c) Increase in investment income as a result of an increase in interest rates.
- (d) Increase in trading income as a result of an increase in gross profit from the operations of the Veterinary Hospital and University Bookshop.
- (e) Increase in expenditure in the current year as a result of an increase in the operations of the Veterinary Hospital.

**Murdoch University**  
**notes to and forming part of the financial statements**

**42. Financial Instruments**

**(a) Net Fair Value of Financial Assets and Liabilities**

The carrying amounts of all the University's financial instruments approximate their net fair values.

**(b) Interest Rate Risk Exposures**

The following tables provide comparative interest rate risks to the University for 2002 and 2001:

2002	Floating Interest Rate	Fixed Interest Maturing		Non Interest Bearing		Average Interest Rate	
		Six months or less \$000	6 months to one year \$000	\$000	Total \$000	Floating %	Fixed %
	\$000						
<b>Financial Assets</b>							
Cash - Bank bills and deposits	2,540	26,866			29,406	3.9	4.8
Shares				10	10		
Student loans				89	89		
Receivables				7,555	7,555		
Loans	900	50	200	297	1,447	8.3	4.8
<b>Financial Liabilities</b>							
Interest Bearing liabilities	10,256				10,256	6.2	
Employee Entitlements				11,865	11,865		
Payables				3,263	3,263		
<b>2001</b>							
2001	Floating Interest Rate	Fixed Interest Maturing		Non Interest Bearing		Average Interest Rate	
		Six months or less \$000	6 months to one year \$000	\$000	Total \$000	Floating %	Fixed %
	\$000						
<b>Financial Assets</b>							
Cash - Bank bills and deposits	2,239	20,422			22,661	4.7	4.3
Shares				10	10		
Student loans				61	61		
Receivables				6,085	6,085		
Loans	900			297	1,197	8.4	
<b>Financial Liabilities</b>							
Interest Bearing liabilities	8,559				8,559	6.5	
Employee Entitlements				10,532	10,532		
Payables				2,851	2,851		

## Murdoch University

### notes to and forming part of the financial statements

#### (c) Receivables

Debtors are carried at nominal amounts less provision for doubtful debts.

Debtors outstanding as at reporting date totalled \$10,356,000 less provision for doubtful debts \$2,712,000.

Student loans outstanding as at reporting date totalled \$88,901.

Credit sales of other products are on 30 day terms.

Tuition fees for international students are payable upon confirmation of acceptance of an offer of admission. After the first semester of enrolment, payment of tuition fees is required by the end of week one of each semester. If fees remain unpaid as at that date, the student's enrolment may be cancelled or a late payment charge may be applicable.

#### (d) Payables

Trade liabilities are normally settled within 30 days or on shorter terms as agreed.

#### (e) Employee Entitlements

Employee Entitlements are presented in accordance with Australian Accounting Standards (AASB1028).

These amounts are adjusted annually to reflect changes in annual and long service leave entitlements.

#### (f) Credit Risk Exposures

The University's maximum exposure to credit risk at balance date in relation to each class of recognised financial asset is the carrying amount of those assets indicated in the statement of financial position.

The University's credit risk is spread over a significant number of parties and is concentrated primarily in Australia.

### 43. Segment Information

The University operates predominately in the Australian higher education industry providing full-time and part-time degree courses as well as non-award courses to local and fee paying overseas students. The University also manages the operations of the St Ives Retirement Village project on the Murdoch campus.

Industry	Revenue		Results		Assets	
	2002 \$'000	2001 \$'000	2002 \$'000	2001 \$'000	2002 \$'000	2001 \$'000
Higher Education	150,892	140,802	1,447	42,755	346,914	340,885
Murdoch Retirement Services Ltd	8,270	9,212	2,913	(2,911)	5,326	2,285
Other	-	-	-	-	-	-
	159,162	150,014	4,360	39,844	352,240	343,170

#### Geographical

The entity operated predominantly in Australia during the years 2001 and 2002.

### 44. Events Subsequent to Reporting Date

There were no events subsequent to the reporting date that have a material effect on the financial statements for the reporting period.

### 45. Contingent Liabilities

There were no contingent liabilities at reporting date.

**notes to and forming part of the financial statements**

**46. Subsidiary Bodies**

Name	The University Company Pty Ltd
Legal Form / Place of Incorporation	Company / Perth
Proportion Held	100%
Cost of Investment	Nil
Contribution to Operating Result	Loss of \$117,872 for the year

The retained profits of The University Company Pty Ltd were \$2,340 as at 31 December 2002

Name	AM-SI Pty Ltd.
Legal Form / Place of Incorporation	Company / Perth
Place of Incorporation	Perth
Proportion Held	100%
Cost of Investment / Contribution to Operating Result	Nil

Name	Murdoch International Pty Ltd.
Legal Form / Place of Incorporation	Company / Perth
Place of Incorporation	Perth
Proportion Held	100%
Cost of Investment / Contribution to Operating Result	Nil

Name	Virtual University of Australia Pty Ltd.
Legal Form / Place of Incorporation	Company / Perth
Proportion Held	100%
Cost of Investment / Contribution to Operating Result	Nil

Name	Murdoch Retirement Services Ltd
Legal Form / Place of Incorporation	Company / Perth
Proportion Held	100%
Cost of Investment	Nil
Contribution to Operating Result	Profit of \$2,913,035 for the year

A donation of \$5,099,007 was made to Murdoch University from profits for the financial year.  
The retained profits of Murdoch Retirement Services Ltd were \$4,897,797 as at 31 December 2002

Name	MS Biotechnology Pty Ltd
Legal Form / Place of Incorporation	Company / Perth
Proportion Held	57%
Cost of Investment / Contribution to Operating Result	Nil

Name	Paragen Pty Ltd
Legal Form / Place of Incorporation	Company / Perth
Proportion Held	77%
Cost of Investment	Nil
Contribution to Operating Result	Loss of \$152,001 for the year

The retained profits of Paragen Pty Ltd were \$152,001 as at 31 December 2002



**Murdoch University**  
**notes to and forming part of the financial statements**

**47. Operating Leases**

The University has the following operating leases in respect of equipment and motor vehicles.  
The University's liability for future payments under these leases are:

	Equipment \$'000		Motor Vehicles \$'000		Total \$'000	
	2002	2001	2002	2001	2002	2001
Not later than one year	572	429	51	68	623	497
Later than one year and not later than five years	729	790	19	12	748	802
	1,301	1,219	70	80	1,371	1,299

**Murdoch University**  
**notes to and forming part of the financial statements**

**48. Associated Entities**

Murdoch College Properties Pty Ltd has a year end reporting date of 30 June. The following financial information is based on audited financial statements provided by Murdoch College Properties Pty Ltd for the year ended 31 December 2002.

**Name and Principal activities**

	Reporting date of Associate	Ownership interest		Voting power	Carrying amount (losses) 31 December
		At 30 June	At 31 December		
	2002	2002	2002	2002	2002
	\$	\$	\$	\$	\$
Murdoch College Properties Pty Ltd - lessor of land & buildings	30 June	45%	45%	45%	(69,831)

	2002
	\$
Operating profits (losses) before income tax	(45,437)
Income tax expense	(4,188)
Share of net results (losses) of associates	(49,625)

	Retained profits (losses)	Other reserves	Cost	Total carrying amount (losses)
	\$	\$	\$	\$
Balance at the beginning of the year	(29,043)	-	45	(28,998)
Previous year adjustment	8,792	-	-	8,792
	(20,251)	-	45	(20,206)
Movements during the year				
Share of net result (before income tax)	(45,437)	-	-	(45,437)
Income tax (expense) benefit	(4,188)	-	-	(4,188)
Dividends received and receivable	-	-	-	-
Balance at the end of the year	(69,876)	-	45	(69,831)

**Associate and summary financial information**

	Murdoch College Properties Pty Ltd	
	2001	2002
	\$	\$
Total assets	8,809,866	8,686,457
Total liabilities	8,854,769	8,841,638
Total equity	(44,903)	(155,181)
Net profit (loss) before income tax	(23,883)	(100,970)
Net profit (loss) after income tax	(14,114)	(110,278)

**Murdoch University**  
**notes to and forming part of the financial statements**

**49. Acquittal of Commonwealth Government Grants**

Amounts received and expended pursuant to the Higher Education Funding Act 1988.

ARC - Australian Research Council

DEST - Department of Education, Science and Training

HECS - Higher Education Contribution Scheme

HEFA - Higher Education Funding Act

PELS - Post-graduate Loans Scheme

SPIRT - Strategic Partnerships with Industry (Research and Training Scheme)

	Operating Financial Assistance		HECS	
	2002 \$'000	2001 \$'000	2002 \$'000	2001 \$'000
Financial Assistance in advance (paid in the previous reporting period for the current reporting period)	4,492	4,245	1,870	1,812
Financial Assistance received during reporting period	56,361	55,835	23,929	23,336
Contributions received from students	-	-	-	3,419
Financial Assistance in advance (received in the reporting period for the next reporting period)	(3,436)	(4,492)	(1,981)	(1,870)
Revenue attributed to the reporting period	57,417	55,588	23,818	26,697
Surplus prior year	497	181	-	-
Funds available for the reporting period	57,914	55,769	23,818	26,697
Expenses for current current period	(57,214)	(55,272)	(23,818)	(26,697)
Surplus for reporting period	700	497	-	-

	Capital Development Pool		ARC Large Grants	
	2002 \$'000	2001 \$'000	2002 \$'000	2001 \$'000
Financial Assistance in advance (paid in the previous reporting period for the current reporting period)	-	-	-	-
Financial Assistance received during reporting period	-	520	1,365	1,159
Financial Assistance in advance (received in the reporting period for the next reporting period)	-	-	(85)	-
Revenue attributed to the reporting period	-	520	1,280	1,159
Surplus prior year	-	-	726	480
Funds available for the reporting period	-	520	2,006	1,639
Expenses for current current period	-	(520)	(1,266)	(913)
Surplus for reporting period	-	-	740	726

**notes to and forming part of the financial statements**

	ARC SPIRT		ARC International Researcher Exchange	
	2002 \$'000	2001 \$'000	2002 \$'000	2001 \$'000
Financial Assistance in advance (paid in the previous reporting period for the current reporting period)	-	-	-	-
Financial Assistance received during reporting period	1,418	1,152	13	21
Financial Assistance in advance (received in the reporting period for the next reporting period)	(114)	-	(2)	-
Revenue attributed to the reporting period	1,304	1,152	11	21
Surplus prior year	367	327	8	9
Funds available for the reporting period	1,671	1,479	19	30
Expenses for current period	(1,138)	(1,112)	12	(22)
Surplus for reporting period	533	367	31	8

	DEST International Postgrad Research		ARC Infrastructure Equipment & Facilities	
	2002 \$'000	2001 \$'000	2002 \$'000	2001 \$'000
Financial Assistance in advance (paid in the previous reporting period for the current reporting period)	-	-	-	-
Financial Assistance received during reporting period	228	268	1,388	-
Financial Assistance in advance (received in the reporting period for the next reporting period)	-	-	(1,041)	-
Revenue attributed to the reporting period	228	268	347	-
Surplus prior year	-	-	3	3
Funds available for the reporting period	228	268	350	3
Expenses for current period	(228)	(268)	(348)	-
Surplus for reporting period	-	-	2	3

**notes to and forming part of the financial statements**

	ARC Special Research Initiatives		DEST Small Grants	
	2002 \$'000	2001 \$'000	2002 \$'000	2001 \$'000
Financial Assistance in advance (paid in the previous reporting period for the current reporting period)	-	-	-	24
Financial Assistance received during reporting period	-	(1)	(9)	276
Financial Assistance in advance (received in the reporting period for the next reporting period)	-	-	-	-
Revenue attributed to the reporting period	-	(1)	(9)	300
Surplus prior year	-	9	45	159
Funds available for the reporting period	-	8	36	459
Expenses for current period	-	(8)	(36)	(414)
Surplus for reporting period	-	-	-	45

	DEST Research Infrastructure Block Grants		DEST Australian Postgraduate Awards	
	2002 \$'000	2001 \$'000	2002 \$'000	2001 \$'000
Financial Assistance in advance (paid in the previous reporting period for the current reporting period)	120	83	-	-
Financial Assistance received during reporting period	1,539	1,079	1,367	1,243
Financial Assistance in advance (received in the reporting period for the next reporting period)	(150)	(120)	-	-
Revenue attributed to the reporting period	1,509	1,042	1,367	1,243
Surplus prior year	715	586	-	-
Funds available for the reporting period	2,224	1,628	1,367	1,243
Expenses for current period	(2,224)	(913)	(1,292)	(1,243)
Surplus for reporting period	-	715	75	-

**notes to and forming part of the financial statements**

	ARC Indigenous Researchers Development		HEFA Research Research Training Scheme	
	2002 \$'000	2001 \$'000	2002 \$'000	2001 \$'000
Financial Assistance in advance (paid in the previous reporting period for the current reporting period)	-	-	-	-
Financial Assistance received during reporting period	30	-	686	-
Financial Assistance in advance (received in the reporting period for the next reporting period)	(2)	-	(686)	-
Revenue attributed to the reporting period	28	-	-	-
Surplus prior year	-	-	-	-
Funds available for the reporting period	28	-	-	-
Expenses for current period	(28)	-	-	-
Surplus for reporting period	-	-	-	-

	HEFA Research Institutional Grants Scheme		PELS	
	2002 \$'000	2001 \$'000	2002 \$'000	2001 \$'000
Financial Assistance in advance (paid in the previous reporting period for the current reporting period)	-	-	-	-
Financial Assistance received during reporting period	340	-	675	-
Financial Assistance in advance (received in the reporting period for the next reporting period)	(340)	-	-	-
Revenue attributed to the reporting period	-	-	675	-
Surplus prior year	-	-	-	-
Funds available for the reporting period	-	-	675	-
Expenses for current period	-	-	(675)	-
Surplus for reporting period	-	-	-	-

**Murdoch University**  
**notes to and forming part of the financial statements**

**Summary of Unspent Financial Assistance**

Category of Grant	Unspent Financial Assistance as at 31 December	
	2002 \$'000	2001 \$'000
<b>Teaching &amp; Learning</b>		
Operating excluding HECS	700	497
<b>ARC</b>		
Large Grants	740	726
SPIRT	533	367
International Researcher Exchange	31	8
Infrastructure - Equipment & Infrastructure	2	3
<b>DEST</b>		
Australian Postgraduate Awards	75	-
Small Grants	-	45
Research Infrastructure Block Grants	-	715
Total	2,081	2,361

It is expected that the total amount of the unspent financial assistance will be approved by the Commonwealth Government for carry over to 2003

