

2025/26

Undergraduate Mini Guide



Ngala kwop biddi.
Building a brighter future, together.

Discover

Why choose Murdoch?	2
Campus life	4
Natural surrounds	5
Our facilities	6
Highschool vs university	8
Your guide to uni lingo	9
Choosing the right course for you	10
Undergraduate courses	11
Support while you study	18
Scholarships	20
Financial help and information	21
How do I get into uni?	22
How to apply?	24



Disclaimer: The information contained in this publication was correct as at February 2025, but is subject to amendment without notice. The University reserves the right to cancel, without notice, any units or courses if the number of students enrolled in these falls below limits set by the University. © 2025 Murdoch University. This publication is copyright. Except as permitted by the Copyright Act no part of it may in any form or by any electronic, mechanical, photocopying, recording or any other means be reproduced, stored in a retrieval system or be broadcast or transmitted without the prior permission of the publisher.

CRICOS Provider Code 00125J | TEQSA Provider ID: PRV12163
(Australian University) | CASE0178725 02/24



Vice Chancellor's welcome

I am delighted to welcome you to Murdoch University as you explore possibilities for the next chapter in your educational journey.

As a Murdoch student, you can expect a contemporary, accessible and inclusive education providing the foundations for a rewarding, purposeful career.

You will also find a caring university where you can make strong connections and lifelong friends; with our academic and professional staff known for going above and beyond to support your success.

In 2025, Murdoch is celebrating the 50th anniversary of our first student cohort. Since our foundation, we have graduated more than 100,000 students, who are making significant contributions to some of society's biggest challenges.

I invite you to consider joining us, knowing that you will be supported on every step of your journey to graduation.

Kind regards,

Professor Andrew J. Deeks
Vice Chancellor and President

Acknowledgement of Country

Murdoch University acknowledges the Whadjuk people of the Noongar nation as the traditional custodians of this country and its waters and that Murdoch University stands on Noongar Country.

Murdoch University pays its respects to Noongar elders past and present and acknowledges their wisdom and advice in teaching and cultural knowledge activities.

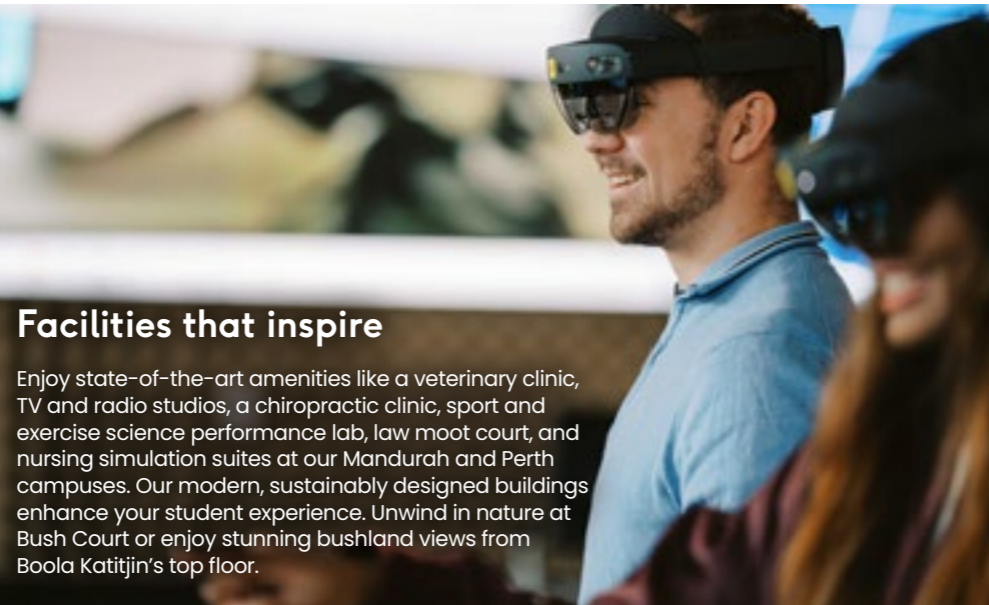
Why choose Murdoch?

Choosing where to study is a big decision.

With our world-class facilities, practical learning experiences, and a vibrant community, Murdoch University is where your journey towards a brighter future begins.

Support for every step

We offer various support services to help you thrive, from enrolment guidance at Student Central to study tips from Peer Academic Coaches. Plus, enjoy free health and wellbeing support to help you adjust to uni life!



Facilities that inspire

Enjoy state-of-the-art amenities like a veterinary clinic, TV and radio studios, a chiropractic clinic, sport and exercise science performance lab, law moot court, and nursing simulation suites at our Mandurah and Perth campuses. Our modern, sustainably designed buildings enhance your student experience. Unwind in nature at Bush Court or enjoy stunning bushland views from Boola Katitjin's top floor.

Find your perfect course

We offer over 100 degrees, allowing you to explore what you love and find your dream career. With flexible options to combine different majors, you can create a unique degree tailored to your interests. Whether it's Law with Arts or Criminology with Science, our diverse pathways ensure that every student can pursue their passion, regardless of their academic background.



Industry partnerships

We collaborate with industry leaders, businesses, the community, and government on exciting projects and initiatives. This hands-on approach ensures you gain the knowledge and skills to meet industry demands, preparing you for success in your career.



Make the most of your university experience

At Murdoch University, you'll make friends and explore new interests through student clubs, Guild activities, and workshops at The Den. Enjoy Thursday markets, community events, volunteer opportunities, and our Sports and Recreation Centre. There's always something exciting happening on campus.



Empowering you with practical skills

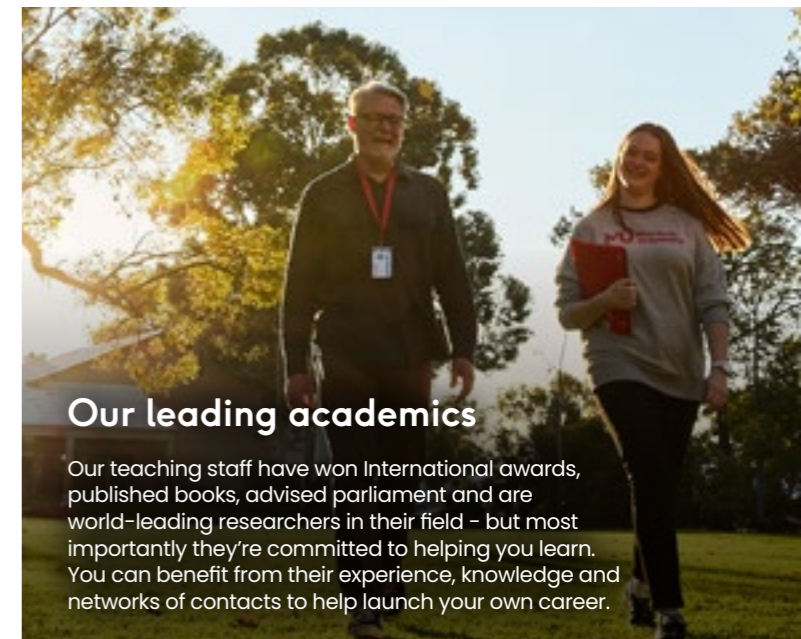
We prioritise practical learning with critical and creative thinking, equipping you with confidence and employability skills. Our bachelor degrees include career development, industry placements, and project units, ensuring you're ready for the workforce.

Global opportunities await

Your degree can take you around the world. Engage with international communities, go on field trips, or study a language overseas. With students from over 80 countries and exchange programs, you'll gain a global perspective and be prepared for a career anywhere.

Our leading academics

Our teaching staff have won International awards, published books, advised parliament and are world-leading researchers in their field - but most importantly they're committed to helping you learn. You can benefit from their experience, knowledge and networks of contacts to help launch your own career.



Campus life

Student life at Murdoch is more than just learning – it's also about getting involved, having fun and making lifelong friends.



8 coffee shops



Grab n Go store



The Tavern



10+ food outlets

Discover the Den

Enjoy activities like therapy dogs, yoga sessions, and cultural events.

Join the Guild

Your student voice on campus, offering advocacy, support services, and a variety of events.

Murdoch Active

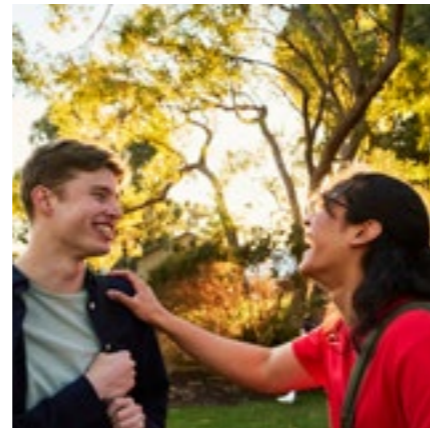
Join the gym, participate in social activities, or join a sports club. Whether you're into fitness, team sports, or just staying active, there is something for everyone.

Join a club

Find your place and join a club! With options from Murdoch Cheer & Dance to Murdoch Medical Society, there's something for everyone. Or, start your own club and create your community.

Student Hub

Enjoy a variety of food and drink, with plenty of comfy spaces to unwind, catch up with friends, or recharge between classes.



Discover

Natural surrounds



Bush Court

This central spot is perfect for chilling on beanbags in the shade, with quick access to food, drinks, and nearby classes.



Marion Blackwell Garden

This shaded spot with swinging chairs is perfect for relaxing between classes, in a garden named after the landscape architect behind Murdoch University's beautiful bush campus.



Chinese Garden

This hidden gem features waterfalls, bamboo groves, and koi ponds, offering a peaceful escape from the noise where you can enjoy the surrounding wildlife.

Banksia Court

Enjoy nature trails, wildflowers, and wildlife local to the campus, with plenty of spots to sit and unwind.

The South Street campus is home to unique Australian wildlife like the adorable quenda and boasts 47 native plant species. As Australia's second-largest university campus at 2.27 square kilometers, it offers students the chance to enjoy studying in a natural environment.



See our latest events

SCAN QR CODE

Discover our exciting events on campus

Our facilities

The Animal Hospital and Working Farms

Our Perth campus is home to a working farm and a fully equipped Veterinary Hospital complete with Small and Large Animal primary care and referral services and a busy emergency clinic.

Chiropractic Clinic

As a chiropractic student, you'll learn to treat patients in our on-campus chiropractic clinic, which houses a rehabilitation centre, physiological therapeutics facility, consulting rooms and a digital radiographic suite.

Engineering Pilot Plant

Our nationally renowned Bayer Pilot Plant is where our engineering technology students learn real-world skills. This engineer's playground is one of only a few in Australia and the only one of its kind in Western Australia.

IT Innovation Hub

Fitted out with the latest mixed and augmented reality equipment, operational data centre and high-performance computing capabilities, our IT Innovation Hub is a cutting-edge teaching, learning and research facility, specially designed for IT students.

Law Moot Court

In our Herbert Smith Freehills Moot Court, you will have the opportunity to try hypothetical cases in a courtroom environment, develop advocacy and mooting skills, and compete against other law schools from around the world.

Library

The library is a hub for learning, teaching and research for our Murdoch community. At the Murdoch library, you'll find a variety of study spaces alongside our vast collection of print and online resources, computers and support for your future studies and research.

Media Arts Centre

As a Creative Arts or Communications student, you'll get to experience our sound stage, television and radio studios, digital post-production facilities, sound-mixing studios, digital and creation workplaces, and professional video and editing suites.

Mind and Body Lab

This state-of-the-art facility includes fully equipped clinical assessment spaces for adults and children, specialist labs for neurophysiology, cognitive and social psychology research, and a virtual reality space.

Murdoch Psychology Clinic

Murdoch Psychology Clinic provides cognitive assessment, individual and group therapy for adults and a variety of assessments and interventions for children, couples and families. If your goal is to become a registered psychologist, you'll need to study an undergraduate degree in psychology and then continue your studies at postgraduate level.

Nexus Theatre

Equipped with world-class facilities, for the past 31 years Nexus Theatre has been providing students, staff and the Murdoch community with a modern teaching and performance space to enjoy.

Nursing Simulation Suites

From your first week as a Murdoch nursing student you will have the opportunity to experience our state-of-the-art nursing simulation suites at both our Mandurah and Perth campuses. These clinical suites house fully equipped clinical teaching wards, treatment areas, and simulation suites. You'll practise your skills on lifelike, high-tech mannequins with heart, lung and digestive sounds, and other realistic features.

SimLab™

Murdoch is proud to be the first university in Australia to offer SimLab™ technology for Education students. An immersive platform that gives students the opportunity to experience, practise and improve their teaching techniques in a safe learning environment.

Sports Science Facility

Our sport and exercise science facility houses a dedicated exercise physiology laboratory, complete with a climate and altitude chamber, plus a performance laboratory with motion capture system and running track. It also includes a rehabilitation, strength and conditioning laboratory, complete with fully equipped gym with Olympic lifting facilities. It is also home to a Mind and Body Lab with a fitness testing area and a DEXA machine.



World's best academic building - Boola Katitjin

Learn and collaborate with your classmates in our award winning*, technology-enriched building. Staying true to our commitment to the environment, Boola Katitjin has been designed to meet the high standards of the Green Building Council's 6 Star Green Star Design.

*Winner. Higher Education and Research Building, World Architecture Festival, 2023



Law Moot Court



Animal Hospital and Farm



Nursing Simulation Suites at Mandurah and Perth campus



Engineering Pilot Plant



High school vs university

Studying at university is a life-changing experience and compared to high school is completely different. You'll choose what to study, set your own timetable and take charge of how you spend your time. You'll have the chance to meet new friends from all over the world, explore new ways of thinking, join clubs and societies and have fun at uni events throughout the year.

Here are three of the main differences between university and high school:

- 1 Your contact hours will be fewer**
The number of hours you spend in classes and lectures (known as contact hours) will be fewer than the hours you spend at high school – but you're expected to do more work in your own time. At the start of each semester, you'll enrol in units and create your timetable, so you can arrange your schedule to suit you.
- 2 You are responsible for your own time**
At university, it's up to you to get to your classes and get your work done. You'll be responsible for how much and what you study and will need to learn to manage and prioritise your university work. You will most likely engage in regular group work for assessments and should consider joining a study group or two to make learning more enjoyable. You'll also need to keep up to date with your readings and prepare for your classes, without anyone prompting you.
- 3 Your learning environment will be different**
You will engage with a range of on-campus and online learning activities, like tutorials and possibly workshops or labs, depending on what you're studying. Many of your activities will be with other students and focus on interactivity and collaboration but you will also be required to engage with the study material independently.

Your guide to uni lingo

Starting to research your uni options and already feeling lost in all the jargon?

- A Adjustment factor** Additional points added to your ATAR by a university. For example, students eligible for Murdoch RISE will have additional points added to their ATAR score for admission to a Murdoch course.
- Alumni** A group of graduates; an individual graduate is known as an alumnus.
- ATAR** Also known as an Australian Tertiary Admission Rank, your ATAR is a rank, rather than a score. It is calculated by the relevant state's tertiary admissions centre and is based on your overall academic achievement in Year 12.
- B Bachelor degree** The first qualification you can complete at university and is also known as an undergraduate degree.
- C Census date** The day when a university finalises your enrolment. Withdrawing after a census date will incur fees or a debt (if you're on a HELP loan) and can mean that the unit will be recorded on your academic transcript.
- Combined degree** Also called double degrees. Double degrees allow you to complete the requirements for two different degrees, for example a Bachelor of Science and a Bachelor of Arts, at the same time. A combined degree may add some time to your overall degree.
- D Double major** A maximum of two majors can be completed under one degree, for example a Bachelor of Criminology with a double major in crime science and criminal behaviour. Double majors usually don't add extra time to your degree.
- E Enabling course** An admissions pathway which is designed to build your skills and help you gain access to an undergraduate degree.
- G Gap year** When a student defers their course for a year to travel or work.
- H HECS-HELP** A government loan that defers the payment for your tuition fees if you are an eligible student, studying an eligible course. For more information visit studyassist.gov.au
- L Lecture** Is often timetabled and can occur on-campus (under 100 students) or online, or it might be a self-paced structure where you work through the lecture content independently before attending campus for other learning activities.
- O Open Day** A good chance for people thinking about studying at uni to explore our campus, find out more about our courses, meet students and academics and enjoy a range of activities and entertainment.
- Orientation** Also known as O-Week, it is designed to welcome new students to university and provide information about your course, the campus and the range of services available. Orientation Week is held at the beginning of each semester.
- S Selection rank** Your ATAR plus any adjustment factors made by a university. Every course has a minimum selection rank to gain entry.
- Semester** The academic year is divided into two semesters. Semester 1 is usually February to June, and Semester 2 is July to November. A typical semester is 17 weeks long and normally consists of 12 teaching weeks, three non-teaching weeks, or study weeks, and two exam weeks.
- Study abroad** The opportunity to see the world, experience a different culture and learn a new language by travelling to study at one of our partner universities located across the globe.
- T TISC** Tertiary Institutions Service Centre is the agency involved in processing applications for admission to undergraduate courses at university.
- Tutor** An instructor who facilitates classes (such as workshops, tutorials and labs) and provides guidance on your assignments. Your tutor is your first point of contact for any questions you have about the unit and they also mark your assignments.
- Tutorial – 'Tute'** A practical and usually smaller class that allows students to engage with a range of learning activities and discuss unit material and readings in more detail.
- U Unit** A component of a course that is focused on a specific topic. Typically for full-time students you will do four units per semester. Each unit is worth three credit points.
- W Workshop** A large-format learning activity that mixes content delivery with interactive and collaborative activities.

Choosing the right course for you

Talk to people

Find out as much as you can about different subjects, courses and careers by talking to your high school career adviser and teachers, your family and friends, and even people in jobs you think you might enjoy.

Explore more than one area

At Murdoch you can study a combined degree or double major, meaning you can study two completely different or complementary areas. You could study a course that will give you the qualification needed for your future career alongside something you find really interesting. For example, you may want to be a lawyer so you study a law degree, but you may also have a passion for science – at Murdoch you can study both!

Figure out what you like

We all learn best when we're studying something we enjoy. So when it comes to choosing your university course, you should base your decision on exactly that. Make a list of the things you love, have a passion for, or are just really good at. You may have a subject at school that you really like or perhaps there's something you do in your free time that you could turn into a career.

Do your research

Browse university websites and brochures to explore the courses and careers you may be interested in, or experience universities for yourself by attending open days and information evenings. Find out more and register at murdoch.edu.au/events

What job you can see yourself working in?

Are you better at working with people or by yourself? Do you thrive in an indoor environment or do you prefer to be outside amongst nature? Do you like the idea of travelling for work? Ask yourself these questions and even get a taste for different work environments by completing work experience while you're still in high school.

It's okay to change your mind

Try to remain flexible in the way you think about your future, because you might just change your mind! If you find that the course you chose isn't really for you, or you discover something different you'd like to study instead, that's okay. Even once you've started at uni, there's still the flexibility to change.



Undergraduate courses

Over the next section of this guide, you can explore all the courses we have on offer, find out about entry requirements and discover the best way to get into uni. We have a wide range of degrees and majors to choose from, so that you can customise your studies to suit your interests and goals.



Agricultural Sciences

QUALIFICATION/MAJOR	DURATION (YEARS)	SELECTION RANK*	TISC CODE	COURSE CODE	CRICOS CODE	RECOMMENDED ATAR SUBJECTS
BACHELOR OF AGRICULTURAL SCIENCE						
Animal Health	3	70	MUSAH	BI391	0102135	Biology, Chemistry, Mathematics Methods
Animal Science	3	70	MUSAS	BI391	0102135	Biology, Chemistry, Mathematics Methods
Crop and Pasture Science	3	70	MUSPC	BI391	0102135	Chemistry, Mathematics Applications
COMBINED DEGREES						
BACHELOR OF AGRICULTURAL SCIENCE/ BACHELOR OF BUSINESS	4	70	MUBSC	BI393	103899F	Biology, Chemistry, Mathematics Applications or Methods

Allied Health

QUALIFICATION/MAJOR	DURATION (YEARS)	SELECTION RANK*	TISC CODE	COURSE CODE	CRICOS CODE	RECOMMENDED ATAR SUBJECTS
BACHELOR OF SCIENCE (CHIROPRACTIC SCIENCE)/ BACHELOR OF CLINICAL CHIROPRACTIC	5	70	MUSCP	BI331	083417K	Biology, Chemistry, Human Biology, Mathematics Methods, Physics
BACHELOR OF SPORT AND EXERCISE SCIENCE	3	70	MUSSC	BI348	095513M	Human Biology, Physical Education Studies
BACHELOR OF SPORT AND EXERCISE SCIENCE AND MASTER OF CLINICAL EXERCISE PHYSIOLOGY	4	70	MUSXM	BI400	106087G	Human Biology, Physical Education Studies
COMBINED DEGREES						
BACHELOR OF SPORT AND EXERCISE SCIENCE/ BACHELOR OF PSYCHOLOGY	4	70	MUSSP	BI415	096789G	Human Biology, Mathematics Methods, Physical Education Studies

Business

QUALIFICATION/MAJOR	DURATION (YEARS)	SELECTION RANK*	TISC CODE	COURSE CODE	CRICOS CODE	RECOMMENDED ATAR SUBJECTS
BACHELOR OF BUSINESS						
Accounting	3	70	MUBAC	BI367	079326C	Mathematics Applications
Business Law	3	70	MUBBL	BI367	079326C	N/A
Entrepreneurship and Innovation	3	70	MUBUE	BI367	079326C	N/A
Finance	3	70	MUBFI	BI367	079326C	Mathematics Applications
Hospitality and Tourism Management	3	70	MUBHT	BI367	079326C	Mathematics Applications
Human Resources Management	3	70	MUBHR	BI367	079326C	N/A
International Business	3	70	MUBIB	BI367	079326C	N/A
Management	3	70	MUBMN	BI367	079326C	N/A
Marketing	3	70	MUBMK	BI367	079326C	N/A
COMBINED DEGREES						
BACHELOR OF AGRICULTURAL SCIENCE/ BACHELOR OF BUSINESS	4	70	MUBSC	BI393	103899F	Biology, Chemistry, Mathematics Applications or Methods
BACHELOR OF BUSINESS/BACHELOR OF ENTREPRENEURSHIP AND INNOVATION	4	70	MUBEI	BI394	103498A	N/A
BACHELOR OF LAWS/BACHELOR OF BUSINESS	5	90	MULBB	BI369	099495J	N/A

*Minimum Selection Rank required for consideration.

Creative Media and Communication

QUALIFICATION/MAJOR	DURATION (YEARS)	SELECTION RANK*	TISC CODE	COURSE CODE	CRICOS CODE	RECOMMENDED ATAR SUBJECTS
BACHELOR OF CREATIVE MEDIA						
Games Art and Design	3	70	MUCGA	BI343	095510C	N/A
Graphic Design	3	70	MUCGD	BI343	095510C	N/A
Photography	3	70	MUCPH	BI343	095510C	N/A
Screen Production	3	70	MUCSP	BI343	095510C	N/A
Sound Design	3	70	MUSCO	BI343	095510C	N/A
BACHELOR OF COMMUNICATION						
Journalism (to be renamed <i>Journalism and Content Production</i> in 2026)	3	70	MUCJO	BI342	095508G	N/A
Global Media and Communication (to be renamed <i>Communication and Media Studies</i> in 2026)	3	70	MUCGM	BI342	095508G	N/A
Strategic Communication	3	70	MUCST	BI342	095508G	N/A
Web Communication (to be renamed <i>Digital Communication</i> in 2026)	3	70	MUCWE	BI342	095508G	N/A
COMBINED DEGREES						
BACHELOR OF COMMUNICATION/ BACHELOR OF CREATIVE MEDIA	4	70	MUCCM	BI344	095512A	N/A
BACHELOR OF CRIMINOLOGY/ BACHELOR OF COMMUNICATION	4	70	MUCBC	BI362	096886G	N/A
BACHELOR OF LAWS/ BACHELOR OF COMMUNICATION	5	90	MULCM	BI353	096884J	N/A

Criminology

QUALIFICATION/MAJOR	DURATION (YEARS)	SELECTION RANK*	TISC CODE	COURSE CODE	CRICOS CODE	RECOMMENDED ATAR SUBJECTS
BACHELOR OF CRIMINOLOGY						
Crime Science	3	70	MUCCS	BI345	095504A	N/A
Criminal Behaviour	3	70	MUCCB	BI345	095504A	N/A
Legal Studies	3	70	MUCLS	BI345	095504A	N/A
COMBINED DEGREES						
BACHELOR OF CRIMINOLOGY/ BACHELOR OF COMMUNICATION	4	70	MUCBC	BI362	096886G	N/A
BACHELOR OF CRIMINOLOGY/ BACHELOR OF GLOBAL SECURITY	4	70	MUCGS	BI366	097992G	N/A
BACHELOR OF CRIMINOLOGY/ BACHELOR OF SCIENCE	4	70	MUCBS	BI360	096885G	Chemistry, Mathematics Applications
BACHELOR OF LAWS/ BACHELOR OF CRIMINOLOGY	5	90	MULCR	BI346	095505M	N/A
BACHELOR OF PSYCHOLOGY/ BACHELOR OF CRIMINOLOGY	4	70	MUCAP	BI416	095507J	N/A



Unsure about your study options? Take our quiz to discover which course is right for you!



Education

QUALIFICATION/MAJOR	DURATION (YEARS)	SELECTION RANK*	TISC CODE	COURSE CODE	CRICOS CODE	RECOMMENDED ATAR SUBJECTS
BACHELOR OF EDUCATION						
Bachelor of Education (Early Childhood and Primary Teaching)	4	70	MUECP	BI383	110544H	N/A
Bachelor of Education (Primary Teaching)	4	70	MUEPT	BI382	0101765	N/A
Bachelor of Education (Primary, 1-10 Health and Physical Education)	4	70	MUEHP	BI384	110545G	N/A
Bachelor of Education (Secondary Teaching)	4	70	See below	BI368	098365E	N/A
- Biology and Environmental Science			MUEBE			
- Biology and Human Biology			MUEBH			
- Earth and Environmental Science			MUEEE			
- English			MUEEN			
- Geography and Business Enterprise (HASS)			MUEBU			
- Health and Physical Education			MUEHE			
- History (HASS)			MUEHI			
- Mathematics			MUEMT			
- Physical Sciences			MUEPH			
- Politics (HASS)			MUEPL			

Engineering and Energy

QUALIFICATION/MAJOR	DURATION (YEARS)	SELECTION RANK*	TISC CODE	COURSE CODE	CRICOS CODE	RECOMMENDED ATAR SUBJECTS
BACHELOR OF ENGINEERING TECHNOLOGY						
Electrical and Renewable Energy Engineering	3	70	MUSER	BI408	110889E	Chemistry, Mathematics Methods, Mathematics Specialist, Physics
Environmental Engineering	3	70	MUSET	BI408	110889E	Chemistry, Mathematics Methods, Mathematics Specialist, Physics
Industrial Control and Automation Engineering	3	70	MUSEI	BI408	110889E	Chemistry, Mathematics Methods, Mathematics Specialist, Physics
BACHELOR OF ENGINEERING (HONOURS)						
Electrical and Renewable Energy Engineering Honours	4	80	MUENR	HI287	110888F	Chemistry, Mathematics Methods, Mathematics Specialist, Physics
Environmental Engineering Honours	4	80	MUENE	HI287	110888F	Chemistry, Mathematics Methods, Mathematics Specialist, Physics
Industrial Control and Automation Engineering Honours	4	80	MUENI	HI287	110888F	Chemistry, Mathematics Methods, Mathematics Specialist, Physics

Environmental and Conservation Sciences

QUALIFICATION/MAJOR	DURATION (YEARS)	SELECTION RANK*	TISC CODE	COURSE CODE	CRICOS CODE	RECOMMENDED ATAR SUBJECTS
BACHELOR OF SCIENCE (ENVIRONMENTAL AND CONSERVATION SCIENCES)						
Conservation and Wildlife Biology	3	70	MUSCW	BI399	106431G	Chemistry, Mathematics Applications
Environmental Science and Management	3	70	MUSEM	BI399	106431G	Chemistry, Mathematics Applications
Marine Biology	3	70	MUSBI	BI399	106431G	Chemistry, Mathematics Applications
COMBINED DEGREES						
BACHELOR OF LAWS/BACHELOR OF SCIENCE	5	90	MULBS	BI409	112645J	Biology or Human Biology, Chemistry, Mathematics Applications or Methods, Physics

*Minimum Selection Rank required for consideration.

Humanities, Arts and Social Sciences

QUALIFICATION/MAJOR	DURATION (YEARS)	SELECTION RANK*	TISC CODE	COURSE CODE	CRICOS CODE	RECOMMENDED ATAR SUBJECTS
BACHELOR OF ARTS						
Asian Studies	3	70	MUAAS	BI356	079364G	N/A
Community Development	3	70	MUACD	BI356	072165E	N/A
English and Creative Writing	3	70	MUAEC	BI356	001572M	N/A
History	3	70	MUAHI	BI356	079364G	N/A
Indonesian	3	70	MUAIN	BI356	079364G	N/A
International Aid and Development	3	70	MUAAD	BI356	079364G	N/A
Japanese	3	70	MUAJS	BI356	079364G	N/A
Philosophy	3	70	MUAPH	BI356	079364G	N/A
Politics and International Studies	3	70	MUGSP	BI356	079364G	N/A
Sociology	3	70	MUASO	BI356	079364G	N/A
Sustainable Development	3	70	MUASU	BI356	079364G	N/A
Theatre and Creative Production	3	70	MUATH	BI356	001572M	N/A
Tourism and Events	3	70	MUATE	BI356	079340E	N/A
BACHELOR OF GLOBAL SECURITY						
Cyberspace, Policy and Security	3	70	MUGSC	BI363	097990K	N/A
Environment, Conflict and Security	3	70	MUGSE	BI363	097990K	N/A
Politics and International Studies	3	70	MUAPI	BI363	097990K	N/A
Terrorism and Counterterrorism Studies	3	70	MUGSA	BI363	097990K	N/A
COMBINED DEGREES						
BACHELOR OF CRIMINOLOGY/ BACHELOR OF GLOBAL SECURITY	4	70	MUCGS	BI366	097992G	N/A
BACHELOR OF LAWS/BACHELOR OF ARTS	5	90	MULBA	BI370	008281K	N/A
BACHELOR OF LAWS/ BACHELOR OF GLOBAL SECURITY	5	90	MULGS	BI365	097991J	N/A

Information Technology

QUALIFICATION/MAJOR	DURATION (YEARS)	SELECTION RANK*	TISC CODE	COURSE CODE	CRICOS CODE	RECOMMENDED ATAR SUBJECTS
BACHELOR OF DATA ANALYTICS						
Business Intelligence	3	70	MUDAB	BI401	106085J	N/A
BACHELOR OF INFORMATION TECHNOLOGY						
Artificial Intelligence and Autonomous Systems	3	70	MUSAI	BI390	102605M	Mathematics Applications
Business Information Systems	3	70	MUSIS	BI390	102605M	Mathematics Applications
Computer Science	3	70	MUSCS	BI390	102605M	Mathematics Applications
Cyber Security and Forensics	3	70	MUSIF	BI390	102605M	Mathematics Applications
Games Technology	3	70	MUSIT	BI390	102605M	Mathematics Applications
Internetworking and Network Security	3	70	MUSIW	BI390	102605M	Mathematics Applications
BACHELOR OF INFORMATION TECHNOLOGY AND BUSINESS	3	70	MUITB	BI375	0101414	Mathematics Applications
COMBINED DEGREES						
BACHELOR OF LAWS/ BACHELOR OF INFORMATION TECHNOLOGY	5	90	MULIT	BI398	103895K	Mathematics Applications

*Minimum Selection Rank required for consideration.

Are you interested in exploring the worldwide and historical experience of Indigenous people in Australia? Consider adding a minor or general elective in Indigenous Knowledges to your degree!



Law

QUALIFICATION/MAJOR	DURATION (YEARS)	SELECTION RANK*	TISC CODE	COURSE CODE	CRICOS CODE	RECOMMENDED ATAR SUBJECTS
BACHELOR OF LAWS	4	90	MULAW	B1395	006942E	N/A
BACHELOR OF LAWS - GRADUATE ENTRY	3	N/A	MULGL	B1340	093251M	N/A
COMBINED DEGREES						
BACHELOR OF LAWS/BACHELOR OF ARTS	5	90	MULBA	B1370	008281K	N/A
BACHELOR OF LAWS/BACHELOR OF BUSINESS	5	90	MULBB	B1369	099495J	N/A
BACHELOR OF LAWS/BACHELOR OF COMMUNICATION	5	90	MULCM	B1353	096884J	N/A
BACHELOR OF LAWS/BACHELOR OF CRIMINOLOGY	5	90	MULCR	B1346	095505M	N/A
BACHELOR OF LAWS/BACHELOR OF GLOBAL SECURITY	5	90	MULGS	B1365	097991J	N/A
BACHELOR OF LAWS/BACHELOR OF INFORMATION TECHNOLOGY	5	90	MULIT	B1398	103895K	Mathematics Applications
BACHELOR OF LAWS/BACHELOR OF PSYCHOLOGY	5	90	MULPS	B1414	096882M	N/A
BACHELOR OF LAWS/BACHELOR OF SCIENCE	5	90	MULBS	B1409	112645J	Biology or Human Biology, Chemistry, Mathematics Applications or Methods, Physics

Medical, Molecular and Forensic Sciences

QUALIFICATION/MAJOR	DURATION (YEARS)	SELECTION RANK*	TISC CODE	COURSE CODE	CRICOS CODE	RECOMMENDED ATAR SUBJECTS
BACHELOR OF BIOMEDICAL SCIENCE						
Biochemistry and Nutrition	3	70	MUBIO	B1419	117500H	Human Biology or Biology, Chemistry, and Mathematics Applications or Mathematics Methods
Biomedicine	3	70	MUBIO	B1419	117500H	Human Biology or Biology, Chemistry, and Mathematics Applications or Mathematics Methods
Clinical Laboratory Science	3	70	MUBIO	B1419	117500H	Human Biology or Biology, Chemistry, and Mathematics Applications or Mathematics Methods
Genetics and Biotechnology	3	70	MUBIO	B1419	117500H	Human Biology or Biology, Chemistry, and Mathematics Applications or Mathematics Methods
Microbiology and Immunology	3	70	MUBIO	B1419	117500H	Human Biology or Biology, Chemistry, and Mathematics Applications or Mathematics Methods
Pharmacology and Toxicology	3	70	MUBIO	B1419	117500H	Human Biology or Biology, Chemistry, and Mathematics Applications or Mathematics Methods
BACHELOR OF FOOD SCIENCE AND NUTRITION	3	70	MUFSN	B1389	0101649	Biology, Chemistry, Mathematics Applications
BACHELOR OF FORENSIC SCIENCE						
Forensic Biology	3	70	MUFSC	B1418	117501G	Human Biology or Biology, Chemistry, and Mathematics Application or Mathematics Methods
Forensic Chemistry and Toxicology	3	70	MUFSC	B1418	117501G	Chemistry, and Mathematics Applications or Mathematics Methods
BACHELOR OF LABORATORY MEDICINE	4	70	MUSLA	B1374	0101823	Biology or Human Biology, Chemistry, Mathematics Applications
COMBINED DEGREES						
BACHELOR OF CRIMINOLOGY/BACHELOR OF SCIENCE	4	70	MUCBS	B1360	096885G	Chemistry, Mathematics Applications
BACHELOR OF LAWS/BACHELOR OF SCIENCE	5	90	MULBS	B1409	112645J	Biology or Human Biology, Chemistry, Mathematics Applications or Methods, Physics

Nursing

QUALIFICATION/MAJOR	DURATION (YEARS)	SELECTION RANK*	TISC CODE	COURSE CODE	CRICOS CODE	RECOMMENDED ATAR SUBJECTS
BACHELOR OF NURSING	3 OR 3.5	70	MUNUR (SL) MUNUM (NSL) MUNUE (EN)	B1373	102199J	Chemistry, Human Biology, Mathematics Applications

*Minimum Selection Rank required for consideration.
SL = School Leaver NSL = Non School Leaver
Codes subject to change in 2026

Physical Sciences and Mathematics

QUALIFICATION/MAJOR	DURATION (YEARS)	SELECTION RANK*	TISC CODE	COURSE CODE	CRICOS CODE	RECOMMENDED ATAR SUBJECTS
BACHELOR OF SCIENCE (MATHEMATICAL SCIENCE)	3	70	MUSMT	B1410	0101823	Mathematics Methods
BACHELOR OF SCIENCE (PHYSICAL SCIENCE)						
Chemistry	3	70	MUSCH	B1411	112644K	Chemistry, Mathematics Methods, Physics
Physics	3	70	MUSPH	B1411	112644K	Chemistry, Mathematics Methods, Physics

Psychology

QUALIFICATION/MAJOR	DURATION (YEARS)	SELECTION RANK*	TISC CODE	COURSE CODE	CRICOS CODE	RECOMMENDED ATAR SUBJECTS
BACHELOR OF PSYCHOLOGY	3	70	MUPSY	B1413	115634K	N/A
COMBINED DEGREES						
BACHELOR OF LAWS/BACHELOR OF PSYCHOLOGY	5	90	MULPS	B1414	096882M	N/A
BACHELOR OF PSYCHOLOGY/BACHELOR OF CRIMINOLOGY	4	70	MUCAP	B1416	095507J	N/A
BACHELOR OF SPORT AND EXERCISE SCIENCE/BACHELOR OF PSYCHOLOGY	4	70	MUSSP	B1415	096789G	Human Biology, Mathematics Methods, Physical Education Studies

Veterinary Science

QUALIFICATION/MAJOR	DURATION (YEARS)	SELECTION RANK*	TISC CODE	COURSE CODE	CRICOS CODE	RECOMMENDED ATAR SUBJECTS
BACHELOR OF SCIENCE IN VETERINARY BIOLOGY/DOCTOR OF VETERINARY MEDICINE	5	94+	MUSVB (SL) MUSVV (NSL)	B1402	108256A	Biology, Chemistry, Mathematics Methods, Physics

*Minimum Selection Rank required for consideration.
SL = School Leaver NSL = Non School Leaver



Support while you study

The transition to university can be daunting, but we're here to help. We offer a range of study and personal support services that can help you get the most out of your time at university.

Student learning

Our student learning support services will help you develop the academic and study skills you need to succeed at university and beyond. You can access self-help resources like Studiosity and Grammarly, visit a Peer Academic Coach at any MyMurdoch Advice location on-campus or online. We also have great programs like Peer Academic Study Support to help you with specific units throughout your study.

Health and wellbeing

A healthy body and mind are crucial ingredients for student success. Visit the counselling and medical services for free or low-cost wellbeing support related to study, relationships, financial or personal stress, medical care, sexual health, nutrition, illness or injury.

Looking to chill out, decompress or meet new friends outside of the classroom? Or are you feeling lost or overwhelmed with Uni life? Come and speak with one of our friendly Student Ambassadors at The Den wellbeing drop-in space. Connect over board games or ping pong, pat a counselling dog, or have a cup of tea over crafts or puzzles. All free!

Student Central

The Student Central team will support you from the moment you arrive on-campus through to the day you graduate. You can chat to the team about fees, parking permits, how to enrol and sign up for classes, your student ID card, or general course information. Our services across Student Central will also provide advice on wellbeing, study or getting the most out of university. Student Success Advisors and Peer Academic Coaches are here to make your life easier by offering personalised support services on your studies, providing helpful resources and English language support, advising on course plans, showcasing academic skills, and much more.



Support for students with disability and health conditions

Murdoch University is committed to ensuring that students with disability and health conditions, or students who are carers for people with disability, are appropriately supported to enable equal access to study. Our team of professional accessibility advisors provide a confidential service tailoring support to your individual needs. There is also the NDIS pre-planning toolkit available if you are accessing the NDIS. It is designed to be used before starting your university studies.

LGBTIQ+ support and services

Murdoch University strives to be a place of belonging for all students. We are committed to supporting and celebrating community members who are sex, sexuality, and/or gender diverse, including but not limited to those who identify as LGBTIQ+. Pride at Murdoch means the inclusion of LGBTIQ+ students, staff, and community so that everyone can be safe and supported to be their whole self at study and work. Many staff and students are LGBTIQ+ Ally trained, there is a flourishing Murdoch Queer Collective, and the LGBTIQ+ Advisory Group regularly meet to advocate for and discuss initiatives relating to the LGBTIQ+ community.

Kulbardi Aboriginal Centre

If you're an Aboriginal or Torres Strait Islander student, the Kulbardi Aboriginal Centre is here to help you with academic, cultural and emotional support until you graduate.

Worship Centre

Based on our Perth campus, our multi-faith Worship Centre offers services and guidance for everyone.

Careers and employability

At Murdoch University, employability is woven into your academic journey. Our curriculum, infused with industry-relevant skills and knowledge, empowers you to graduate with confidence in an ever-evolving professional landscape.

We also have a comprehensive suite of free career development modules. Our dynamic careers portal is buzzing with industry events, job opportunities and downloadable careers and employability resources equipping you with the tools and tactics to navigate the competitive job market. No matter what stage you are at in achieving your career goals, we have you covered.

Additional support programs

If you're an elite athlete or a member of the Australian Defence Force, our student support programs are here to provide additional support and to assist you in balancing your studies and additional commitments throughout your time at Murdoch.



Find out more about our support services.



Scholarships

Receiving a university scholarship is a welcome addition to any study journey.

For many, it may even be a life-changing opportunity. With more than \$2.5 million in scholarships awarded every year, students from all walks of life are enjoying the benefits a scholarship can bring. Unlike loans, scholarships do not need to be repaid so you can spend more time focusing on your studies.

Whether you're a domestic or international student, new or continuing, we encourage you to explore the opportunities available.

Regional student?

If you're a regional student, find out how you can apply for accommodation scholarships such as the Tertiary Access Payment.

goto.murdoch.edu.au/Scholarships

Financial help and information

If you're considering university, it's important to understand the financial investment, and structure, before you apply.

Your fees will depend on several factors, including your citizenship, residency status, your course, and the units you choose. You'll find more information in relation to paying your fees on this page: www.murdoch.edu.au/study/fees/course-fees

Higher Education Loan Program (HELP)

If you meet the citizenship and residency requirements, you may be eligible for a HELP loan. This means that you can choose to either pay for your units upfront each semester or defer your fees to a HELP loan.

Please visit the StudyAssist website for HELP eligibility requirements studyassist.gov.au/help-loans

Centrelink

Centrelink offers a range of support services to eligible students. These include Austudy, ABSTUDY and Youth Allowance.

Find out if you're eligible at humanservices.gov.au

Other costs and expenses

There are other fees and costs to consider when planning for the financial aspects of your studies. These include:

Parking

Our Perth campus has three parking zones. Search 'parking' on the Murdoch website to find out more about fees and information. Parking at the Rockingham and Mandurah campuses is free for students at the time of publication, although you will still need to display a valid parking permit.

Books

You can buy new books from our online store (theschoollocker.com.au/universities/murdoch-university) or second-hand books through the Student Guild. Our library also has textbooks in closed reserve and has a wide variety of resources available online.

Student Services and Amenities Fee

The student services and amenities fee (SSAF) is a fee charged by all higher education providers to help with student services and features that aren't directly linked to your studies. The SSAF is charged twice per year, and the amount you pay depends on whether you're a full or part-time student, and which campus you study at. If you are eligible to defer, by completing a SA-HELP form with your TFN by the relevant census date, your SSAF can be deferred to a HELP loan. For more information about SSAF including rates, please visit murdoch.edu.au/study/fees/student-services-and-amenities-fee



“

This opportunity has had a tremendous impact on my life. It eased the financial burden of my exchange and provided invaluable opportunities to grow as a leader. Interacting with incredible minds has inspired me to further my studies and strengthen ties between Asia and Australia.”

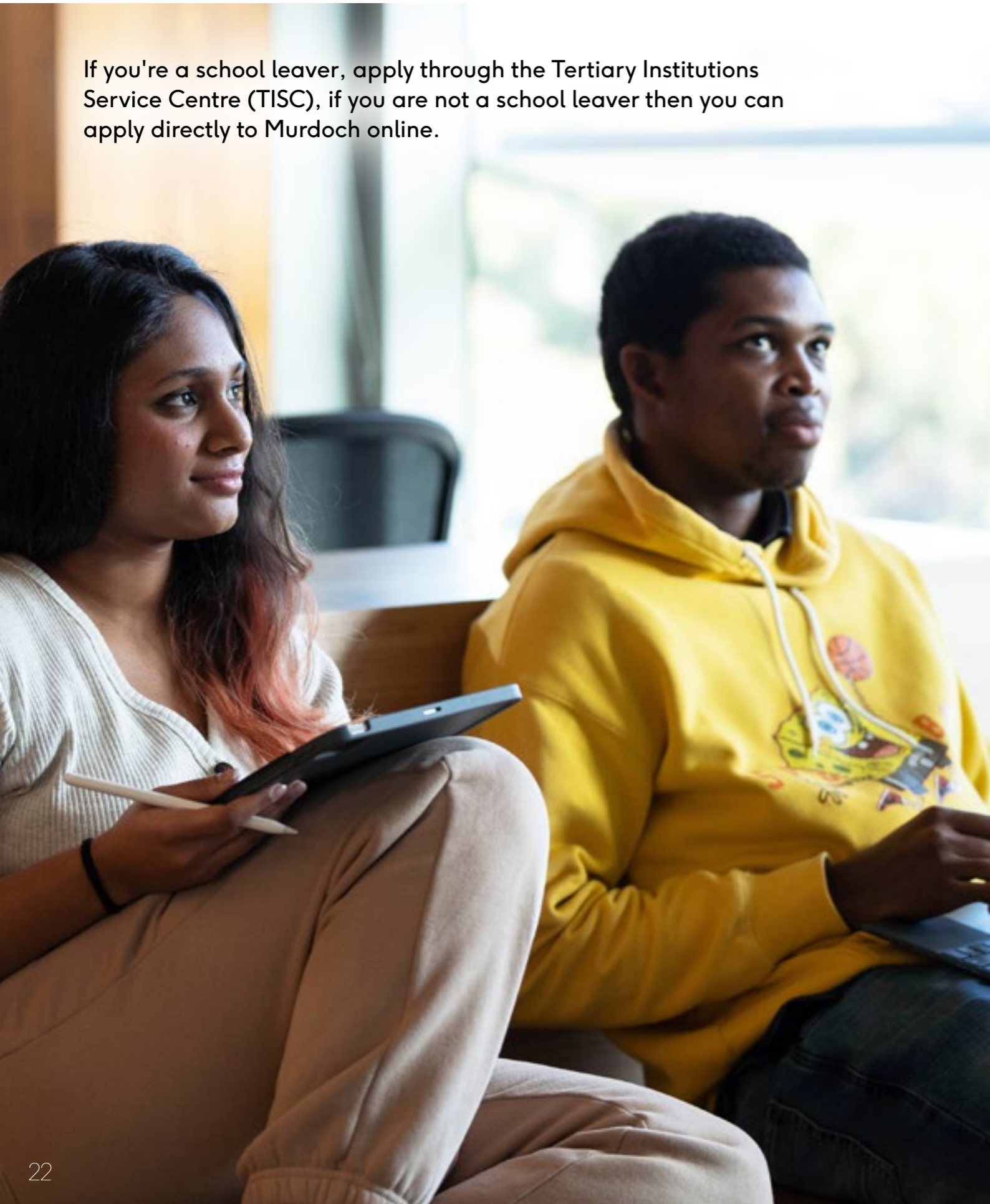
Nasrin, Westpac Future Leaders Scholarship recipient



Find out more about applying for a scholarship.

How do I get into uni?

If you're a school leaver, apply through the Tertiary Institutions Service Centre (TISC), if you are not a school leaver then you can apply directly to Murdoch online.



What entry requirements will I need to meet to study at Murdoch?

To gain admission into an undergraduate course at Murdoch, you will need an ATAR or selection rank of 70 or higher (depending on your chosen course) and you will need to meet our English Language Competency (ELC) requirements for most courses.

There are multiple ways to demonstrate your ELC and achieve a selection rank of 70.

Meeting academic and English Language Competency (ELC) requirements

To gain admission into a course at Murdoch, a selection rank of 70 or higher (depending on your chosen course) is required and you need to meet our English Language Competency (ELC) requirements. The most common ways for a domestic student to meet ELC requirements are:

- Successfully completing Year 11 and 12 (or an equivalent program approved by the WA Dept of Education) or two years of VET study delivered in English in an Australian school or provider; or
- A minimum scaled score of 50 or higher in ATAR English (or equivalent), or;
- A score of 140, or higher in the Written English Component of the Special Tertiary Admission Test (STAT).
- Law and Nursing have different ELC requirements.

Achieving a selection rank

The majority of courses at Murdoch require a selection rank of 70. This can be achieved by attaining an adjusted or unadjusted ATAR, by scoring 24 in the International Baccalaureate (IB), by attaining the required number of level 4s in an International Big Picture Learning Credential (IBPLC), completing an accredited Certificate IV or higher, using a portfolio, or by completing an enabling pathway course.

International Baccalaureate

The International Baccalaureate (IB) is a widely used pathway for gaining admission to Murdoch University. Students who achieve an IB score of 24 are eligible to apply for courses with a selection rank of 70. Similarly, an IB score of 27 is the equivalent of an 80 selection rank, 33 a 90 selection rank and 37+ a 94+ selection rank.

What's the difference between an ATAR and selection rank?

Your ATAR, or Australian Tertiary Admission Rank, is a number between 0 and 99.95 – a rank which tells you how you've gone compared to other Year 12 students in Western Australia.

Adjustments are used to increase your selection rank due to factors like the location of your high school or primary residence, the selection of subjects including a language other than English or specialist Mathematics or your eligibility for an educational access scheme such as Murdoch RISE. Selection rank adjustments don't change your ATAR – they change your selection rank for entry into a particular university.

Am I eligible for Murdoch RISE?

At Murdoch we offer Murdoch RISE, a selection rank adjustment aimed at supporting access to university for students from regional, low socio-economic, or Aboriginal or Torres Strait Islander backgrounds. It can help you get into your preferred course by increasing your Murdoch selection rank. There's no need to register – if you're eligible, the adjustment factor is automatically added to your raw ATAR score when you apply to Murdoch.

What do I do if I don't meet the entry requirements to study at Murdoch?

If you don't meet the entry requirements that's okay – we offer a range of pathways to study at Murdoch, including our range of enabling pathway courses. Our enabling pathway courses will help you transition to uni and boost your academic skills.

Media portfolio pathway

Our media portfolio pathway is for creative students aiming to enrol in an arts course based on your motivation and potential for creative aptitude. You will be assessed by the Academic Chair for your desired course, based on your creative portfolio. To be eligible for our media portfolio pathway, you must be able to demonstrate English Language Competency (ELC) and your aptitude and ability via a body of work related to the course you are applying for.

Experience based entry

At Murdoch University, we are inclusive and understand that ability, aptitude and motivation to succeed in degree studies can be demonstrated in many ways. If you're a domestic student and haven't met a selection rank of 70 via academic ATAR or IB scores, AQF qualifications, or enabling programs, then regardless of whether you are a high school leaver or over the age of 20, our experience based entry could be the ideal option for you.

Experience based entry assesses your academic and vocational and life achievements, in combination. We take into consideration evidence of extracurricular and life experiences, such as employment, volunteering, work experience, sports coaching, and school and community leadership because these are great indicators of your interests, motivation, commitment, and desire to succeed and contribute.

Enabling pathways

Our enabling pathway courses are free and can improve your literacy, numeracy and critical thinking skills. Available on-campus or online, these courses are designed to get you ready for university study, whether you didn't quite get the ATAR you need or have been out of study for a while. Find out more murdoch.edu.au/enablingpathways

Ask us a question!

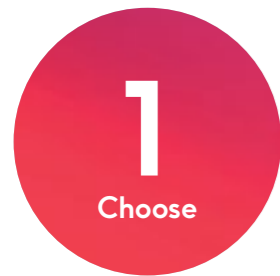


SCAN QR CODE

Find out more about our pathways to university.

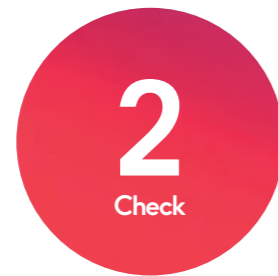
How to apply

Are you ready to kick-start your exciting new journey at Murdoch? Applying to study is easy as 1, 2, 3 and we're here to help guide you every step of the way.



Choose the course you would like to study. Explore all Murdoch courses at www.murdoch.edu.au/study

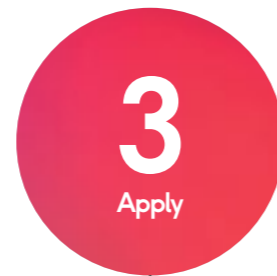
Don't forget to take note of the TISC code and course code - you will need one of these codes for your application.



Check the entry requirements for your course and find out if you're eligible for direct entry or if you will need to apply through another pathway.

Find out the entry requirements for your course at murdoch.edu.au/study

Find out about Murdoch admission pathways at murdoch.edu.au/admissionpathways



Applying for Semester 1 ✓
commencing in February

Apply at tisc.edu.au
Check out the TISC website for information on application dates and deadlines.

Applying for Semester 2 ✓
commencing in July

Apply at myadmission.murdoch.edu.au
For most courses, applications close the Thursday before the teaching period commences.



Applying for Semester 1 ✓
commencing in February

or Applying for Semester 2
commencing in July

Apply at myadmission.murdoch.edu.au
For most courses, applications close the Friday before the teaching period commences.

*Some courses may require applications through TISC.



Apply



Questions? Speak to one of our friendly Meet Murdoch team members.

Questions? Speak with one of our friendly Meet Murdoch team members on **1300 687 3624** or email **study@murdoch.edu.au**

 [tiktok.com/@murdochuni](https://www.tiktok.com/@murdochuni)

 [facebook.com/murdochuniversity](https://www.facebook.com/murdochuniversity)

 [instagram.com/murdochuniversity](https://www.instagram.com/murdochuniversity)

 [linkedin.com/school/murdoch-university](https://www.linkedin.com/school/murdoch-university)

 [Murdoch University](#)

MU **Murdoch
University**

